

Mr. Coffey To Study In Austria

Oberlin, Ohio.—Frank L. Coffey of Boone is one of eighty-five juniors in the Oberlin College Conservatory of Music who will sail from New York on Wednesday, September 25, for a year's study at the Mozarteum in Salzburg, Austria.

Class members will sail on the Queen Elizabeth and arrive in Cherbourg, France, on September 30. A four-day bus trip through France and Germany will bring them to Salzburg on October 3.

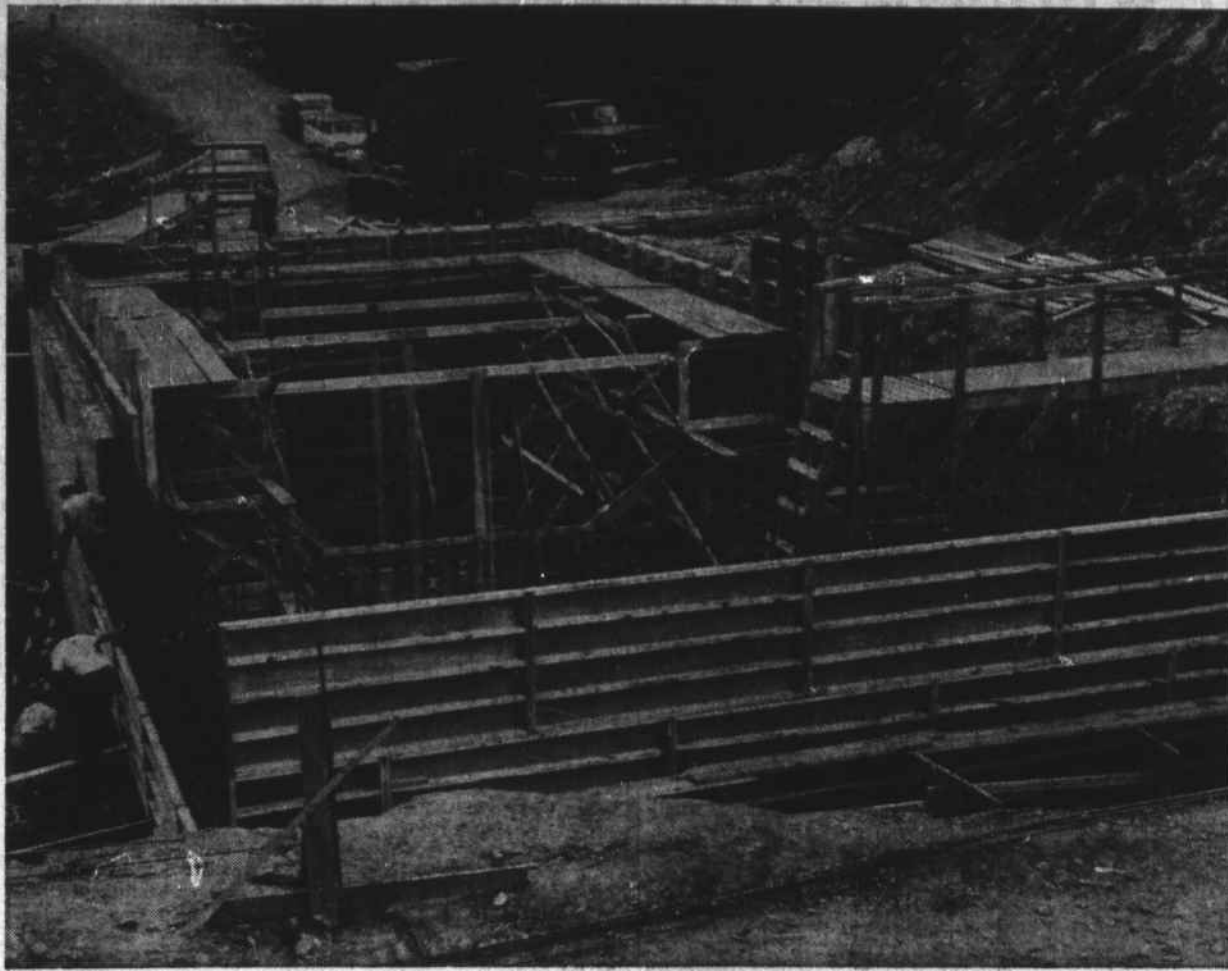
The juniors will study under the resident staff of the Mozarteum and will receive full credit toward their Oberlin degrees.

The Oberlinians will take private vocal and instrumental study, theory, counterpoint, chamber music, orchestra, chorus, opera, German, and special courses focusing on the musical and cultural heritage of Europe.

Supplementing the curriculum are Oberlin-sponsored educational trips as well as contact for each student with an Austrian family.

The academic year in Salzburg, transportation included, costs the student no more than an equivalent year spent on the campus in Oberlin.

Tribes in the interior of Morocco still regard the camera as an instrument of the devil to seize and imprison men's souls.



DISPOSAL PLANT CONSTRUCTION UNDERWAY

B. Rock Sewer Plant Ready By May 1

Blowing Rock's new sewage plant on U. S. 321 north of town is beginning to take shape

after about 13 weeks work this summer.

Work on the plant began in June with the grading. But the actual work on the plant itself did not start until July.

W. B. Dillard Construction Co. of Shelby is doing the work on the concrete building. W. C. Ashe, superintendent, said the men were now working on the main disposal tank.

About one-half of its concrete walls have been poured. The rest of the walls should be finished in about two weeks.

Ashe said it had taken his men about five weeks to set the forms in which to pour the concrete.

Although only half of the walls have been poured, Mr. Ashe said the main tank was about two-thirds finished, since the concrete floor has been

after about 13 weeks work this summer.

The plant is scheduled to be ready by May 1, 1964. It will re-

place the present system of using three septic tanks to dispose of sewage.

First Viewing Dates For '64 Automobiles Are Announced

First viewing dates for the introduction of the new 1964 automobiles were announced recently by new car dealers in Watauga County.

September 20, Friday, is the first of these dates. Early risers Friday will be among the first people nationwide to see the new Chrysler Corporation line of Plymouths, Dodges, Chryslers, Valiants, and Dodge Darts.

Other major 1964 models will be shown for the first time on the two following weekends.

New Chevrolets, Oldsmobiles, Corvairs, Olds F-85's, and Chevies will be shown on Thursday, September 26, at Andrews Motor Co.

Rummage Sale Next Saturday

The Boone Junior Woman's Club is sponsoring their annual fall rummage sale Saturday, September 21. The sale will be held in the former office of the Estel Wagner Building on West Howard Street from 8 to 4:30.

September 27 will mark the unveiling of the new Fords, Mercurys, Comets, and Falcons, at Winkler Motor Co.

On October 3, General Motors will complete its fall lineup with showings of Buicks, Pontiacs, and Tempests, at Greene Motor Co.; and Rambler will make its 1964 debut at Watson's Garage in Deep Gap.

1964 truck models are already showing and are offered for sale. In addition, advance sales of cars have been reported by some dealers.

Wilson's Used Cars, Watauga County Jeep dealers, have announced that the 1964 line of Jeep vehicles is already showing also, and that one new vehicle has already been sold.

Quite a few changes are to be expected in most of this year's autos, although it is impossible to state just what these changes will be. Ford, though, is almost sure to show the greatest variation from last year's models, with a restyling which will include: an entirely new roof line, more weight and size in all models, the absence of tail fins and a renovated dashboard on the Fairlane 500, more trunk room, seats placed higher off the floor, and new

sheet metal on all Falcon models.

In contrast, the body lines of the popular Galaxie 2-door hardtop will remain essentially unchanged; and the Thunderbird stylists will return to the traditional and large-selling look of 1960 or thereabouts.

Oldsmobiles will feature changes in side chrome and use of sheet metal on the front, as will Chevrolet. Chevrolet is also coming out with a completely new series, the Chevelle, which is planned to fit market demands for a model between the Chevy II and Impala. Buick will feature a new type of automatic transmission.

Chrysler Corporation automobiles will show changes in front ends and roof lines, though these will probably be minor; and engine power is being stepped up considerably in some models. Plymouth will issue a limited number of 426-c. i. engines for highway use, engines of the type which were used only in racing cars last year.

Rambler, more than any other car, is sticking to traditional styling and mechanics; but several changes will be evident this year, in the form of slight modifications.

Overall, cars continue to get bigger, heavier, and more powerful; and most new car dealers are looking forward to 1964 as their best year in history.

District Lodge Meet In Boone

A joint meeting of the 48th and 49th Masonic Districts will be held with Snow Lodge No. 363, A. F. & A. M., in Boone, September 23 at 5 p.m.

Edward Burrier, Grand Master of the Grand Lodge of North Carolina, along with other Grand Lodge officials, will attend.

The districts include lodges in Wilkes, Ashe, Alleghany and Watauga.

Fulbright compares Goldwater with Chinese Reds.



DUCK

HUNTING for really good insurance for your home and property? New Umbrella Homeowners Policy gives you perfect coverage when it rains trouble. Call us today.



David N. Spainhour Insurance for Your Every Need Boone Insurance Agency, Inc. Professional Building Boone, N. C. — AM 4-8732 Your Independent Insurance Agent Serves You First

SEALY Golden Sleep SALE



Same fine cover formerly used on the Hotel Posturepedic

Golden Sleep Mattress \$39.88

GUARANTEED TWICE\* For Satisfaction... For Value!

Table with 2 columns: FEATURES and You could pay. Rows include Heavy 8 oz. woven stripe cover (\$59.50), Smooth, button-free surface (\$59.50), and Edge Guards\* prevent sagging edges (\$59.50).



Shop, compare, judge for yourself; this buy is so big it can't be beat. See it now!

\*If, within 30 days after purchase, you are not completely satisfied or you can buy another mattress with as much value for the same or less money, return your Golden Sleep mattress or box spring for full refund.

GREENE FURNITURE COMPANY Edmisten Bldg. 264-8231



For the Lullaby Set...

SNUGGLY WARM SLEEPWEAR

Reg. \$1.29 99¢ EACH

CHECK THESE FEATURES!

- 100% Cotton Knit • Machine Washable • Completely Colorfast • Extra-Full Cut For Comfort • Sizes For Infants and Children

SKI PAJAMAS INFANTS' SLEEPERS GROW-TYPE SLEEPERS

- Sizes 2 to 6: 2-piece pajamas with long sleeves, rib-knit wristlets and anklets. Covered elastic waist. Pacific Blue, Canary Yellow and Pink.
• Sizes 1 and 2: Absorbent cotton knit, gripper-on fasteners at waist. Cozy cloth feet, comfortable non-binding construction. Pink, Aqua and Yellow.
• Sizes 3 to 6: 2-piece style, extra long tops. Boxer-type bottoms, covered elastic waistband, plastic non-slip feet. Pink, Yellow, Pacific Blue.

Now in STRETCH TERRY!

INFANTS' SLEEP 'n PLAY SET

- NEW Talon Zephyr Zipper • Easy-Wash... No Ironing

80% cotton, reinforced with nylon for greater wash-and-wearability. Zips from neck to ankle. Tri-color pom-poms at collar and feet. Pink, blue, maize, white. Medium, large.

\$1.94

Your Dollar Buys More at Your Crest-Ben Franklin Store

CREST

These Prices Effective September 19 - 20 - 21

Thurs., Fri., Sat., Only