

FOR BEST RESULTS
advertisers invariably use the columns of the Democrat. With its full paid circulation, intensely covering the local shopping area, it is the best advertising medium available.

WATAUGA DEMOCRAT

An Independent Weekly Newspaper . . . Seventy-Seventh Year of Continuous Publication

BOONE WEATHER				
1964	Hi	Lo	prec. '63	Hi Lo
Nov. 17	60	37	.03	66 35
Nov. 18	66	32	.06	62 37
Nov. 19	59	32	.25	60 47
Nov. 20	58	31	.14	47 30
Nov. 21	37	23		61 40
Nov. 22	40	14		59 46
Nov. 23	51	18		58 47

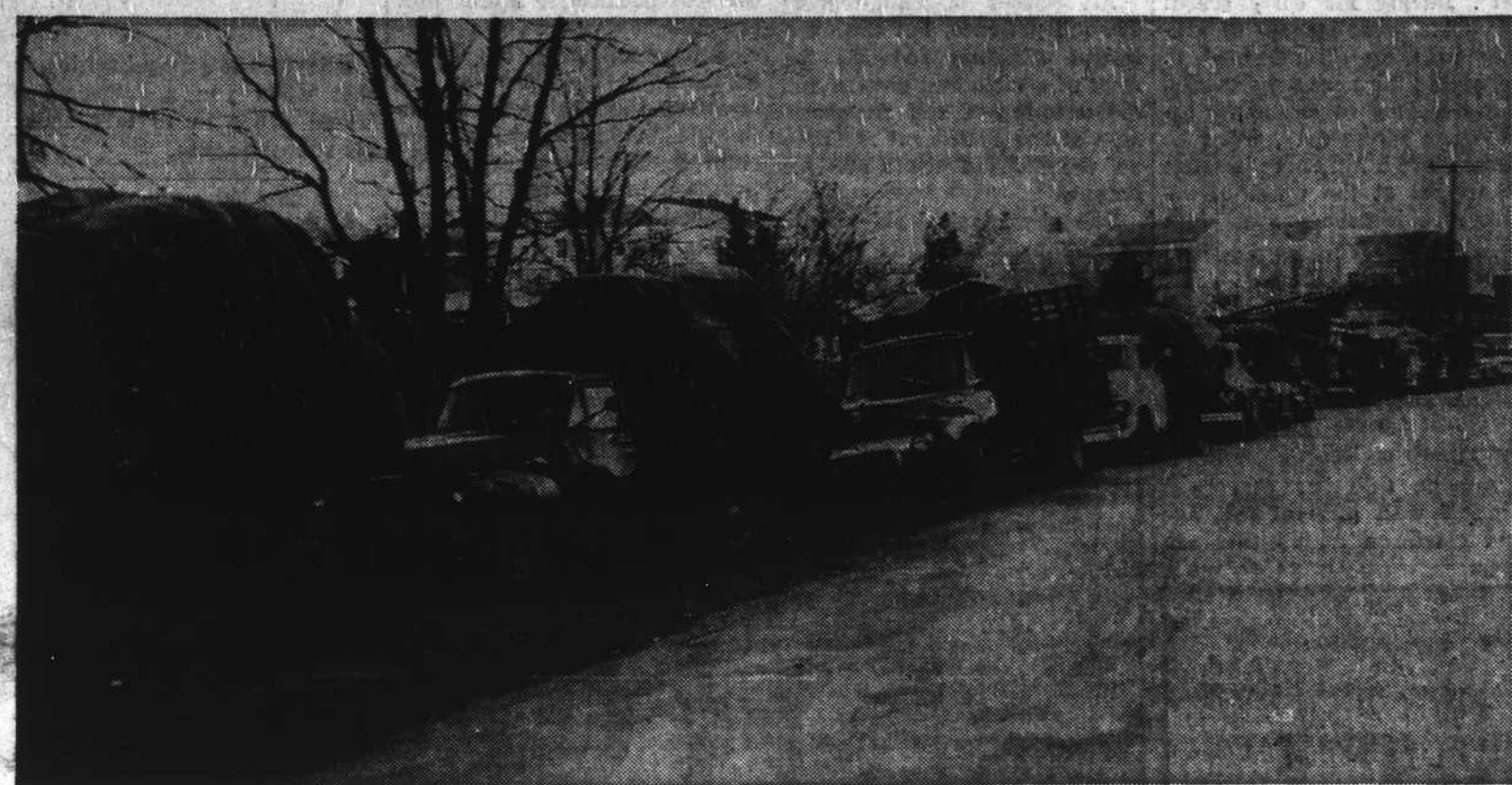
VOLUME LXXVII—NO. 22

CONTENTS COPYRIGHTED 1964
RIVERS PRINTING CO., INC.

ROONE, WATAUGA COUNTY, NORTH CAROLINA, THURSDAY, NOVEMBER 26, 1964

10 CENTS PER COPY

22 PAGES—3 SECTIONS



A LONG GRAY LINE OF TOBACCO TRUCKS waited Friday to be checked into the Mountain Burley Warehouse at Depot and Faculty streets. Sales will start on Monday, Nov. 30. (Rivers photo.)

Weed Trucks Are Rolling In Burley Auctions Will Start In City Monday

Another Good Year Is Seen For Market

"This will be another big year for us and for the farmers."

Thus, Joe Coleman, co-operator of the Mountain Burley Warehouse Company, summed up the prospects for this year's tobacco market in Watauga County.

The 1964-65 burley auctions begin a little late this year. Last year's sales began on Monday, Nov. 25. This year things will be getting underway on Monday, Nov. 30.

Coleman stated that "In comparison, the quality of tobacco on the floors is a little better than last year's. More care seems to have been taken in curing and grading."

Last year's sales, averaging about \$57.90, were expected to be light due to dry weather and a short growing season. Sales in 1962-63 were the best in Boone's history, bringing about one and a quarter million dollars.

Mrs. Harriet L. Sikes, co-owner of the Mountain Burley Warehouses, said Friday that about 750,000 pounds of tobacco already was on the floors.

Coleman commented that "Poundage on the floor compares favorably with last year's opening sales, and farmers are bringing their crops in at the normal rate."

"The hard freeze over the weekend was a blessing to tobacco growers in that tobacco dried out at a faster rate and the curing process was stepped up."

"All tobacco on the floor is in good shape. We believe prices will be good, and every effort will be made to assure farmers of the top money for their crops."

"Mountain Burley Warehouse will abide with the resolutions as set forth by the Burley Sales Committee. The prize room being constructed at Warehouse No. 3 will be available immediately and in time to accommodate buyers," Coleman said.

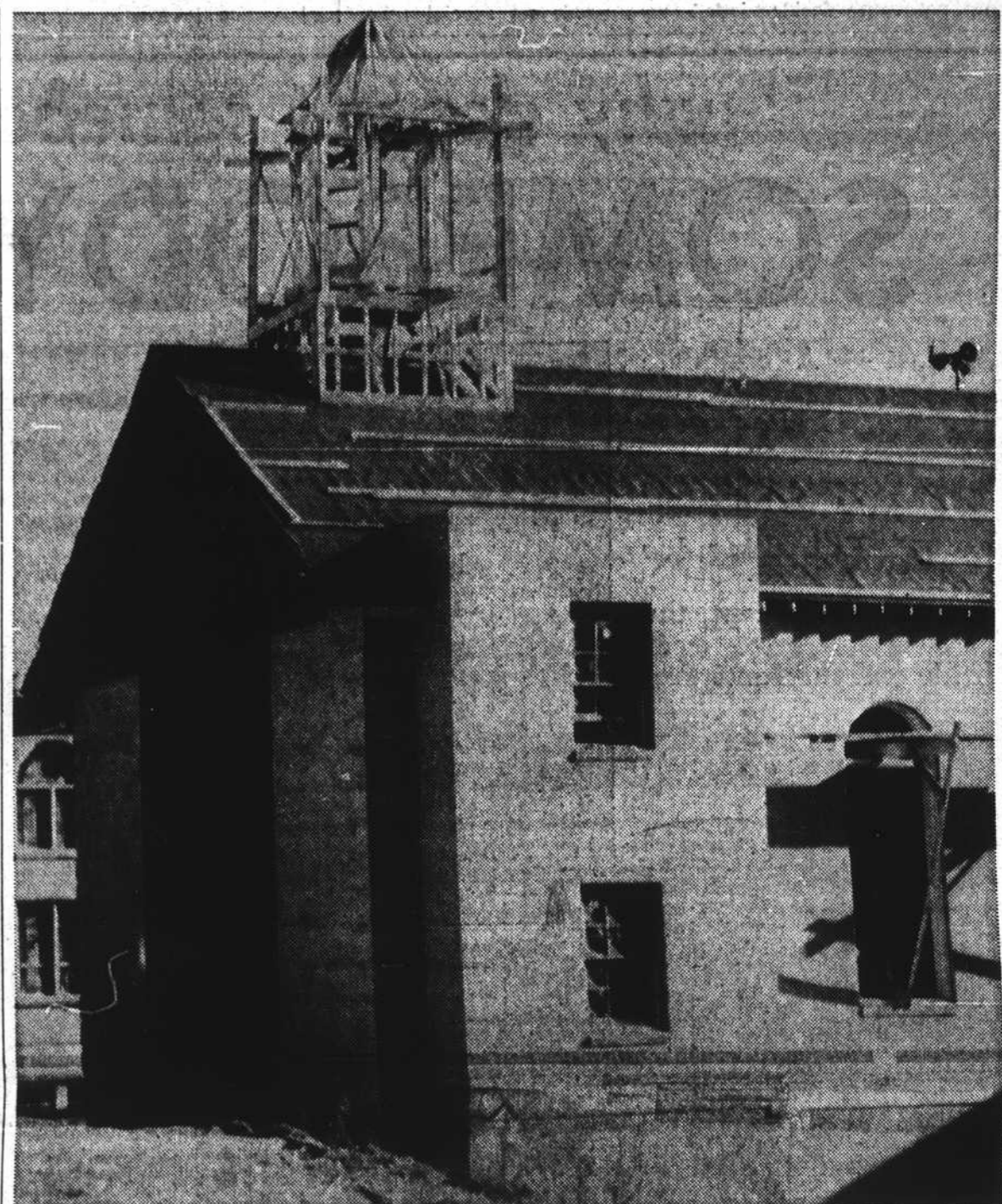
The Burley Sales Committee has resolved "that there shall be a Christmas holiday marketing recess to begin at the close of sales on Dec. 22. Sales shall be resumed on Jan. 4, 1965."

The Big Burley Warehouse, located on Highway 421 Bypass west of Boone, was extensively repaired and renovated last year. Owners are J. M. Smothers Jr., R. E. Bullock and King Roberts.

Bullock told the Democrat Tuesday that about twice as much tobacco is on the floor now than last year, an estimated 600,000 pounds.

He believes price will be in line with this season's high-quality tobacco. Crops are coming in from North Carolina, Tennessee, Virginia and there's space left. They will sell on five-day basis.

W. R. Richardson, Assistant Extension Agent, said that tobacco may be even lighter this year because of an early freeze (Continued on page two)



THE FRAME OF THE BELL TOWER went up this week on the chapel addition being built by the First Baptist Church of Boone. The bell should be pealing by spring of 1965. With the exception of windows and doors, the structure has been closed in so that work may continue through the winter. (Rivers photo.)

Horn Budget For Next Year Is Approved At \$68,800.00

The 1965 budget for the "Horn in the West", as approved by the Southern Appalachian Historical Association:

ESTIMATED INCOME: Ticket sales, \$58,000; concession, gift shop, programs and cushions, \$6,800; advertising in program, \$3,500; and miscellaneous income, \$500 for a total of \$68,800.

ESTIMATED EXPENSES: Production salaries and expenses, \$37,000; Maintenance and janitor service, \$500; administrative salaries, bookkeeping, ticket taker, ticket office, ushers, parking lot, program and cushion sellers, clean-up men and theater manager, \$3,480. Promotional director, \$1,500 (formerly \$3,000); general

manager, \$5,000 (formerly \$3,000); secretarial help, \$3,300; utilities, \$600; insurance, \$650; ticket purchases, \$135; souvenir program purchases, \$1,500; freight and express, \$100; royalties, \$2,900; rent, office, warehouse, heat, lights and town rent, \$1,900.

Advertising, including purchase of brochures, \$6,500; telephone and telegraph, \$800; office supplies, \$500; postage, \$800; travel expenses, \$400; dues, \$35; keeping grounds, \$200; printing, \$500; theater supplies, \$300; and miscellaneous, \$200 for a balance of \$68,800.

Dr. Smith Gets Emeritus Status At Appalachian

Dr. Wiley F. Smith, who recently retired from the faculty at Appalachian State Teachers College, has been awarded Emeritus status.

Emeritus status is granted by the Trustees, upon the recommendation of the president, and carries with it these privileges and recognitions: Emeritus rank of Professor of Psychology (for Dr. Smith); listing in the college catalogue; participating in academic processions; attending convocations, faculty meetings and public programs; use of the college library; and office space.

Dr. Smith received the A. B. degree from Union University in Jackson, Tenn., in 1924, the M. A. degree in 1928 and the Ph.D. in 1931 from Peabody College. He also has attended a summer session at the University of Chicago.

He holds membership in the following organizations: American Association of University Professors, N. C. E. A., Southeastern Psychology Association, American Psychological Association, Southern Society of Psychology and Philosophy, North Carolina Academy of Science and the South Carolina Academy of Science.

In 1936 Dr. Smith was appointed chairman of the psychology department at Appalachian State. At ASTC he has been active on the curriculum committee and the library committee.

Dr. Smith is listed in the following biographical directories: (Continued on page two)

Grocery Store To Close After Thirty Years

The uptown retail grocery store, known as Hollar's Grocery, will be closed at the end of the business day Saturday, and Mr. Jones Hollar will incorporate the merchandise into his City Meat Market and Grocery on East King Street.

Hollar's Grocery is one of the older stores in the community and was founded more than thirty years ago by L. H. Hollar and sons. Since then it has been operated by Mr. L. H., the late Craig Hollar, M. C. Hollar, and Jones Hollar. The City Market and Grocery is also a long-time business of the Hollar family.

Let Us Be Grateful

"Today we give our thanks, most of all, for the ideals of honor and faith we inherited from our forefathers—for the decency of purpose, steadfastness of resolve and strength of will, for the courage and the humility, which they possessed and which we must seek every day to emulate. As we express our gratitude, we must never forget that the highest appreciation is not to utter words but to live by them."

—JOHN F. KENNEDY

November 5, 1963.

Mrs. Greene, Former Hotelist, Dies Sunday

Mrs. Etta Mae Dougherty Greene, 89, widow of Richard Manley Greene, died Sunday in a Greensboro hospital after an illness of five months.



MRS. GREENE

Mrs. Greene was born to Daniel Baker Dougherty and Ellen Bartlett Dougherty and had lived in Greensboro for 13 years, after having spent most of her life in Boone, where her husband was a pioneer general store owner. She was a sister to D. D. and B. B. Dougherty, founders of Appalachian State Teachers College. She and her husband formerly operated the Greene Inn, a small hotel, on the site of the ancestral Dougherty home.

Surviving are two sons, David

Greene of Greensboro and Roy Greene of Winston-Salem; three grandchildren; and two great-grandchildren.

The funeral was conducted at 2 p. m. Tuesday at Boone Methodist Church by the Rev. J. Boyce Brooks, the Rev. Lester Brown, and the Rev. Richard J. Crowder. Burial was in City Cemetery.

Johnnie Austin Is Designated Jaycee Of Month

Johnnie Austin, mortician at Reins-Sturdivant Funeral Home, was named Jaycee of the Month for his work on the recent Miss Watauga County Beauty Pageant. The pageant was the most successful in the Boone Jaycees history.

Johnnie is a native of Hudson and a graduate of Hudson High School. Since 1953 he has resided in Boone and graduated from Appalachian State Teachers College in 1957. They have two sons.

He has been a member of the Boone Jaycees for eighteen months.

Broyhill Will Meet Constituents Monday

Congressman James T. Broyhill will hold office hours in Watauga County next Monday, November 30, as he plans to spend the entire day in this area.

The 9th District representative to Congress, who was recently re-elected for a second term in Washington, is continuing his practice of making himself available for conferences in communities of the eleven counties of the District. Broyhill will be available to discuss legislation likely to be considered in the next Congress or to offer assistance with personal problems involving the Federal government.

The schedule of stops in Watauga County is as follows:

- 8-8:45 a.m.—Boone Post Office.
- 10-10:30 a.m.—Green Valley School.
- 11-11:30 a.m.—Deep Gap Post Office and Greene's Trading Post.
- 12-12:30 p.m.—Blowing Rock Post Office.
- 1-1:30 p.m.—Foscoe Post Office.
- 2:30-3 p.m.—Howard Mast's Store, Valle Crucis.
- 3:30-4 p.m.—Farthing's Store, Beaver Dam Township.
- 4:30-5 p.m.—Burkett's Store, Mable.

Strong Response To Christmas Seal Mailing Is Being Noted

Early replies and contributions to the 1964 Christmas Seal Campaign letters through last Friday have been tabulated and indicate a strong response can be expected until the campaign closes.

TB Christmas Seals have already had two outstanding loyal supporters. One might be termed the "Widow's Mite," who contributed and wrote, "I am a widow with a small income

... but I give my small bit to this worthy cause." The other could be called from "far away places," when a former resident sent a sizeable contribution for the Christmas Seals and wrote, "I wish the Seal Chairman and all those that collaborate with him a grand success for this good cause. God bless you all."

Whether your contribution falls within the "widow's mite"

or the sizeable one from "far away places," it will find a ready place in the Watauga Tuberculosis Association's programs, according to Mrs. Bob Draughon, executive secretary. Mrs. Draughon added, "TB has increased and some cases continue to be discovered that will not respond to the present TB drugs, which indicates that research must be one of our never-ending projects."

Championship Football Game In Asheville

The Western Regional Championship football game will be played at the Asheville Memorial Stadium Thursday, November 26, at 2 p. m. Appalachian High School will be playing Swain High School for the championship.

Agricultural Development Group Organizes Program

The Watauga County Agricultural Development Group met Nov. 19 at the Watauga ASCS office to organize the 1965 Agricultural Conservation Program.

The development group comprises the ASC County Committee, the County Extension Chairman, the SCS Technician and a representative of the North Carolina Department of Conservation and Development (forestry division).

Those present at the preliminary planning meeting to discuss needs for the county were Alfred Adams, Cashier Northwestern Bank; W. C. Richardson, County Agriculture Agent; Edgar Greene, Soil Conservation Service Technician; Joe Clayton and Crayte Teague, North Carolina Department of Conservation and Development; Arvil Slempp, Maymead Lime

Company; Edgar Hardin, Farm Bureau representative; Lewis Burkett, Vendor; and the following community committeemen:

Howard Cable, Beaver Dam community; Coy Billings, Joe McNeil and A. Y. Howell, Brushy Fork community; Ned Glenn, Laurel Creek community; Tom Jackson and Ernest Moritz, Meat Camp community; John F. Cook and Howard Brookshire, New River community; Mack Thomas, North Fork community; Will Byrd, Shawneehaw community; Joe Coffey, Sr., W. B. Day and Thomas Fairchild, Stony Fork community; Jeff Shook and Arlie B. Hodges, Watauga community.

The development group selected practices designed to fit the conservation needs of Watauga County during the coming year. They also wrote specific

practice specifications such as seeding rates, dates and fertilizer analysis and rates to be used for each practice. The newly developed plan will be reviewed at the State level and approved before going into effect Jan. 1, 1965.

The 1964 plan had eleven practices. According to records of the ACP Program Clerk, Mildred S. Ward, a total of 1,477 farmers have requested one or more of these conservation practices. Approximately \$76,000 has been approved on the 1964 Agricultural Conservation Program.

The County ASC Committee has received \$69,121 for use on conservation practices developed under the 1965 program.

Break-Ins Continue In Watauga County

Following a well-grooved pattern, break-in of business establishments continues in Boone and Watauga County.

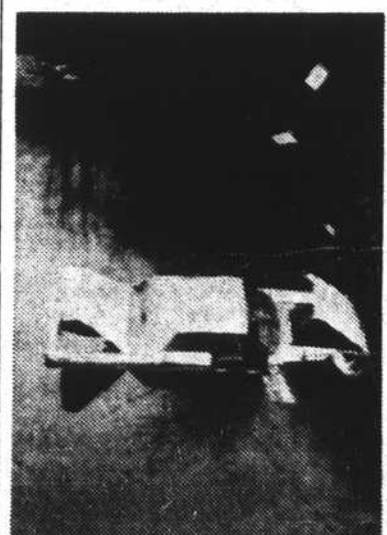
Sheriff Dallas Cheek reports a break-in at the 421 Texaco Station on Highway 421 east of Boone about 2 a. m. Monday morning. Vandals forced open the front door of the establishment and made off with one tire, several pairs of nylons, cigarettes and .22 rifle shells, an approximate loss to Mr. Claude Bodenheimer of \$40.

Police Chief Hubert G. Thoms reports a break-in at Thrift Market sometime between 4 and 7:45 a. m. Saturday. Time was set as a police check was

made at 4 a. m. and the owner, Mrs. A. E. McCreary, opened the store at 7:45 a. m. at which time he discovered entry had been made through a window in back of the store. Investigation revealed that a watch valued at \$99.95 was missing.

On Monday morning, the Town of Boone police investigated a reported break-in at Smithy's store on King Street. A lid on the coal chute in back of the basement had been pried off letting vandals gain entrance to the basement. Nothing of value was reported to have been taken.

No arrests have been made, but investigations are continuing.



1964 LINCOLN owned by Mrs. Elfreda Sharpe Keller of Blowing Rock and Charlotte which plunged down an embankment into stream on the Blowing Rock Road last Wednesday, after skidding on wet pavement, was completely demolished. Mrs. Keller and her 3-year-old grandson, John H. Oberle, who was a passenger, were taken to Blowing Rock Hospital for treatment of injuries.