

Washington Comments

Washington, D. C.—A major struggle is developing within each political party and will continue into the convention in 1968. The recent elections made this a certainty.

The struggle within the Republican Party is between moderates, led by Rockefeller, Romney, and others seeking to bar the party nomination to Richard Nixon or a more conservative candidate and the conservatives, led by Reagan, Goldwater, Tower, etc., who are out to prevent the traditional "eastern" progressive wing of the party from picking the 1968 nominee.

In the Democratic Party there are rumblings which reflect a lack of confidence in an LBJ victory in 1968. In certain daily newspapers ads are appearing in behalf of a Kennedy-Fulbright ticket in 1968—an appeal for funds to aid this cause.

The polls show the President's popularity down. What some Democrats fear most is a continuing war in Vietnam, perhaps an enlarged conflict; this with the declining popularity of the President and an attractive G.O.P. ticket might spell defeat for the Democratic ticket in 1968.

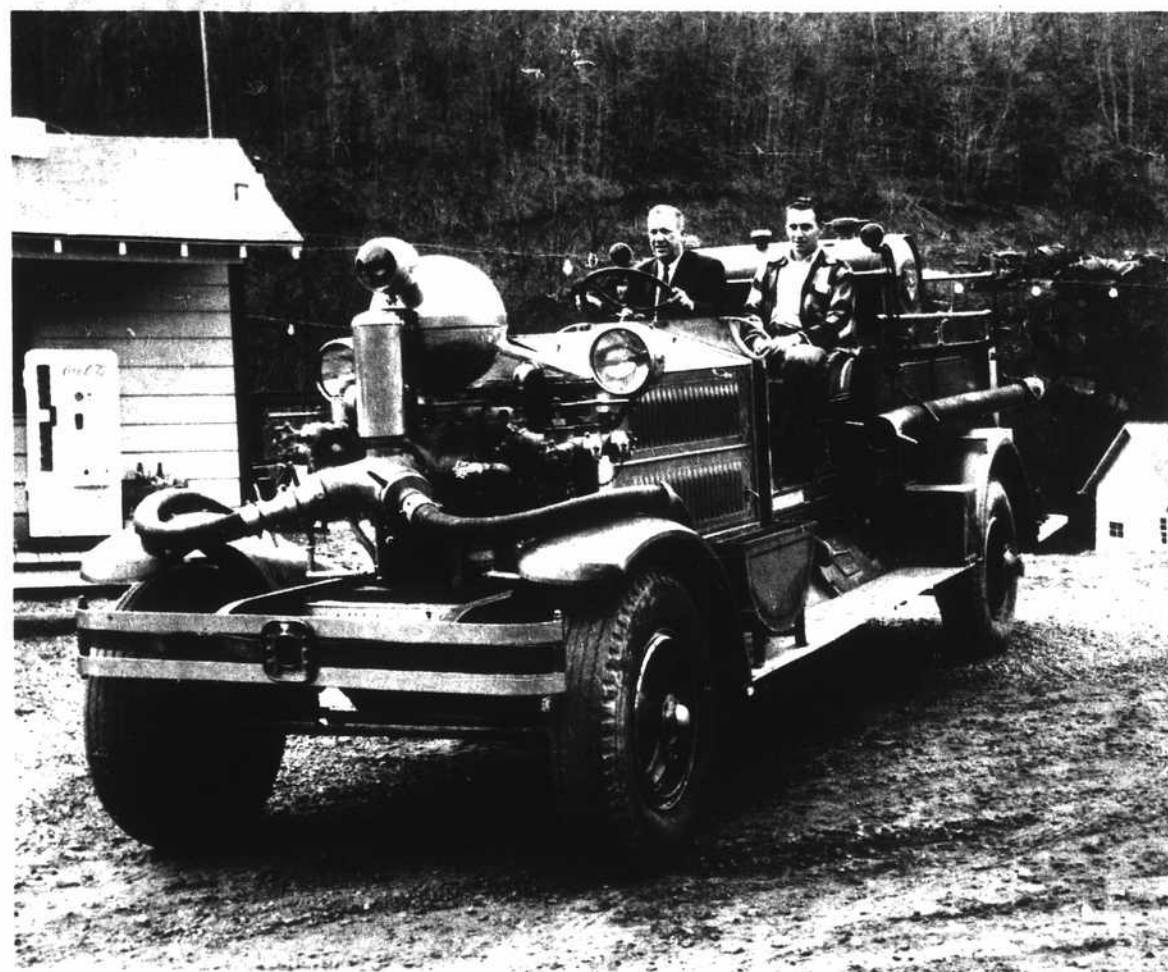
There is also a chance Senator Robert Kennedy—if the President's popularity slips far enough—will attempt to force himself on the 1968 ticket with the President. No one believes the party could refuse to nominate the President if he desires to run again but there are those who say he may not be able to turn back such a Kennedy bid if most Democrats feel he is the underdog.

There is also the slight chance that the President—like Harry Truman before him—will decide not to run again or refuse to run because of failing health. Because of these various possibilities activity in the Democratic Party is intense—with Robert Kennedy having scores of dedicated and able employees working night and day for the Kennedy cause.

The Republican intra-party fight will be more open and perhaps more interesting. Nixon is seeking to maintain his role as a moderate and his image as one with high level experience in government—the senior statesman of the party (after Eisenhower). He is almost sure to have Barry Goldwater's support and is probably still the leading contender for the nomination as of this date.

Romney's chances are suspect; those of Reagan might be surprisingly good in two years if he makes a good Governor. Dark horses are Rhodes and Taft of Ohio and Percy of Illinois, among others. Should Reagan line up behind Nixon, as second man on a prospective G.O.P. ticket, or should Eisenhower endorse a Nixon slate, such a combination would be hard to stop at the Republican convention.

Secretary of the Treasury Henry S. Fowler reports the repayment by France and Italy of some of their post-war debts has helped hold the U. S. dollar drain to an adjusted \$217 million during the third quarter of 1966.



Engine Number 4 Comes To Boone

This genuine Ahrens-Fox, double-ignition, 23-foot-long red fire engine came to Boone on Thanksgiving Day. Her owner, Guy Wilson (seated left), said he heard Engine Number 4 (formerly of the Atlanta, Ga., Fire Department) was for sale in Newland. He and Vernon Hodges, who is seated beside Wilson, went to Newland to see the antique truck. As Wilson put it, someone said, "Do you want to buy it?" He answered in the affirmative, and a member of the Volunteer Fire Department in Newland offered to bring it to Boone. It has 18 spark plugs (6 on one side, 12 on the other), an auxiliary hand-crank, grey running boards, front-mounted pump and most of the original paint—

gold leaf, etc. Patented in 1916, the year Wilson was born, this Ahrens-Fox bears a plaque dated Aug. 30, 1927, listing the fire committee, the finance committee and John B. Kennedy, Fire Chief, presumably of the Atlanta department. Some of the red paint has worn thin on the brass trappings, but the fire truck has its original hose, and on each end of the water tank an artistic eagle clutching three arrows, and a vine with 11 berries perches on a plaque with 11 stars and 11 stripes. Wilson says he isn't sure what he'll do with the relic, although he feels it's the kind of thing that ought to be part of a city park so that kids could enjoy it. (Staff photo)

Corn Cobs Make Good Jelly

BY JANICE CHRISTENSEN

Rather Learn Than Boycott

"Sure, Randolph County homemakers are concerned about food prices," observes Rose Badgett, home economics extension agent. "But instead of marching, they're trying to learn new methods of shopping that will help them get quality meats at lower prices."

Evidence of this was seen when John Christian, extension food science specialist, North Carolina State University, gave a demonstration "Steaks at Hamburger Prices." Meat department managers in Asheboro report the 60 ladies attending Christian's lesson took his message to heart—sales of the first cut chuck of beef and rib end pork loin have increased.

"One could say a bit of know-how and a sharp knife is the secret," Miss Badgett concludes.

Corn Cob Jelly

If you run out of grapes and apples for jelly-making, use corn cobs, Mrs. Henry Butler, a Sampson County homemaker advises.

According to Rebecca S. Godwin, assistant home economics extension agent, Mrs. Butler found a recipe for corn cob jelly and decided to give it a try. The result: an orange-red jelly that tastes similar to apple jelly. "In addition to passing the taste test, the jelly passes the budget test," Mrs.

Butler notes. "Try it," she advises.

Buying Men's Clothing

A lesson, "Tips On Buying Men's Clothing" is receiving much interest from homemakers in Burke County. For they realize that women purchase the majority of men's and boys' garments, Mrs. Jane C. Arndt, home economics extension agent, observes.

Over 250 women received information on buying men's clothing, clothing etiquette and today's trends in men's fashions, she said. "But they are still asking for more consumer information in this area."

Serves As Volunteer

Chasing a nine-year-old around a room as she shouts, "I'm not going to take a shot!" and then holding her while a

nurse gives her an immunization shot may not be every teenager's idea of fun and enjoyment. However, this is one experience 4-H Club member, Elaine Cheatham, has faced as a volunteer with the Vance County Public Health Department.

Elaine told Jane Carter, assistant home economics extension agent, that she has learned much from her once-a-week experiences at the clinic.

Miss Carter says Elaine is a busy girl. Besides her duties as a Health Department volunteer, she is active in school and church activities and is member, junior leader and president of her 4-H Club.

A Word Of Caution

Do not mix chlorine bleach,

Local Seal Sales Chairman Hopeful

"We're holding our breath," says Charles H. Blackburn Jr., chairman of the Christmas Seal Campaign, "but if contributions continue to

come in at the same rate, we will equal last year's figures. Or, knock on wood, we might even top them."

The returns thus far are \$725.41, compared with \$750. on the same day last year. Total returns last year were \$2544.50, and this year's goal is \$2,500.00.

Today, approximately 110,000 Americans are known to have active tuberculosis. Almost 50,000 new active cases are reported each year. An estimated 10,000 inactive cases relapse into active tuberculosis. Acute respiratory diseases are the major cause of time lost from work and school. Christmas Seal contributions help the Watauga Tuberculosis Association in fighting TB and many of the other respiratory diseases.

"We certainly hope that those who haven't responded to their Christmas Seal letters will do so now," concluded Blackburn, so we can achieve our goal to carry out and expand our planned programs."

Burley Sales Open Monday; Prices Good

Burley sales got underway Monday as the Boone Tobacco market opened officially at Mountain Burley No. 1. Heavy poundage and a price average slightly higher than last year were reported.

The Boone market reported sales of 337,200 pounds Monday and growers were returned an average price which might top a \$70 average, according to warehouse officials.

Market operators said prices were higher than on opening day, November, 1965, with some baskets bringing \$76 per hundred pounds.

Paul & Ralph Say:



By J. Paul Winkler 21st Year Saluting Watauga County

The Shopping Season is upon us. Help make Boone a greater shopping center.

Mr. Farmer: Check with our local markets for selling your produce and tobacco and livestock.

To be a stronger shopping center, we must patronize our local merchants—giving them more volume, so they can give local consumers prices competitive to those in larger towns.

Paul Watauga Insurance Agency

J. Paul Winkler
Ralph Gwaltney
264-8291
Box 267
224 West King Street
Boone, N. C.



MOTHER'S RING

THE DESIGN IS PATENTED THE NAME IS REGISTERED

Twin bands of solid 14 Karat Gold to recall her wedding day . . . with a lustrous synthetic stone of the month to mark the birthday of each of her children

Order NOW For Christmas!

Stallings Jewelers

E. King St. Boone, N. C.

Latta Johnson Realty Company

264-2492

WE NEED LISTINGS

- 42 ACRES VALUABLE MOUNTAIN DEVELOPMENT LAND near Seven Devils.
- BEAUTIFUL BRICK HOUSE near college, central heat, big lot.
- 3 BEDROOM HOUSE almost new. Heat to each room. \$13,750
- FRAME HOUSE, 4 bedrooms, central heat, extra lot and on paved road at Foscoe. \$16,500
- BRICK HOUSE—close to college. 2 bedrooms, wall to wall carpet in living room. \$13,000
- ALMOST NEW BRICK HOUSE, 3 bedrooms, 2 baths, big lot.
- BRICK HOUSE, close in, 3 bedrooms, basement. \$12,500
- 7½ ACRES with tobacco allotment near Silverstone. \$ 4,350
- BRICK HOUSE with heat, 2 bedrooms. Payne Branch Road. \$12,000
- DUPLEX located close in. Good return on investment. \$16,500
- FRAME HOUSE, two bedrooms, full basement, four acres near Deep Gap. \$13,750
- FRAME HOUSE, 3 bedrooms, central heat, near Shadowline. \$ 9,500
- 2 BEDROOM HOUSE, excellent condition, beautiful view, near new Vermont Tool Plant. \$12,500
- 15 ACRES choice for development lots near Tweetsie.
- SEE US for choice building lots.
- IDEALLY LOCATED COMMERCIAL PROPERTY. See us for information.
- TWO GOOD HOUSES, one rented \$50 a month; one acre lot, near paved road. Cove Creek. \$11,500

CITY FLORIST

Successor To Carolyn's Flower Shop
264-8201 - 264-2492

BELK'S— OPEN FRIDAY NIGHT 'TILL 9:00 O'clock

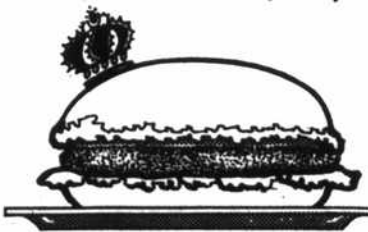


YIP-E-TI-RAY'S!



There will be a hearty yell from your youngsters when you drive into a Ray's Kingburger parking lot, 'cause they know that the food is great. And besides, with five wrappers from any Ray's food item and one dollar they can receive an official Ray's wrangler. They can receive either a cowboy or cowgirl hat and an official Ray's Wrangler badge. There's a Ray's near you.

15¢



KINGBURGER

MT. AIRY OR NORTH WILKESBORO WINSTON-SALEM JONESVILLE-ELKIN KERNERSVILLE BOONE