

Speaking Of Golf

BY JOE MAPLES

Qualifying play in the Boone Golf Club matchplay championship picked up over this past weekend with around 20 players getting started and several finishing up their second rounds. Early leader with some fine golf is Willard Trivette. After a fair first round of 79, Willard turned it on during the second round with nines of 34-36 for a one under par total of 70 and a qualifying total of 149. He is followed closely by Dale Adams Jr., with two consistent rounds of 75 for a total of 150. Others who have finished are John Critcher with 82-84-166 and O. K. Richardson with 86-82-168.

Of those who have played their first round only, Austin Adams has 40-32-72, Alan Wagner has 41-34-75, John Winkler 42-37-79 and Horace Dowling 40-38-78. Four ladies have completed their 18 holes of qualifying and Cleone Hodges is the early leader with 51-50-101. Other scores include Earle Thomas with 103, Edith Estes 116 and Lib Critcher with 124. In the Junior division David Meeks leads with 52-49-101 followed by Cubby Coe at 111 and Bobby Littleton with 116.

We still have over two weeks left for qualifying which is plenty of time, but please don't wait until the last minute to get started. Qualifying ends Sunday, Sept. 15, with match play starting the following week.

Entries are already coming in for the 10th annual Blue Ridge Pro-Am and local interest is running high. Play this year will be in fivesomes and the host club will furnish one amateur for each team of visitors. As of now, we still need around ten local amateurs with handicaps. Members of the local club interested in playing should call the golf shop or put your name on the list posted on the bulletin board. Each amateur will need at least ten scores with which to establish a handicap. It is to the players advantage to have 20 scores if possible. This year's event will have a record purse of \$1800 to which entry fees will be added. This should bring the total purse to around \$3800 depending upon the number of entries. We expect to have thirty five or six teams of five players for a total of around 180. Remember the dates, Sept. 11th and 12th.



Men of the Watauga High Booster Club who will be involved in pre-season sale of season tickets for home football games of the Watauga High Pioneers are (left to right) Earl Petrey, Harvey Trivette, James Marsh, Fred Gragg, Hugh Hagaman, Stacy Eggers Jr. and Robert Poe, head coach of the Pioneers

Prices Raised For Tickets To Football

Prices will be raised from \$25 to \$30 on family season tickets to the Watauga High home football games this year, according to head coach Robert Poe.

Poe made the announcement at a luncheon meeting of the Watauga High Booster Club Friday at the Cardinal Restaurant. Coach Poe told the Booster Club members and the members of the coaching staff that the price hike was made because of the increase in equipment prices.

"We had to make some adjustment on the price of family tickets," he explained, adding that single ticket prices will remain at \$10 for the season's admission.

Last year the club raised between \$3,500 and \$4,000 in pre-season sale of season tickets and with the additional receipts from the gate, the total budget was

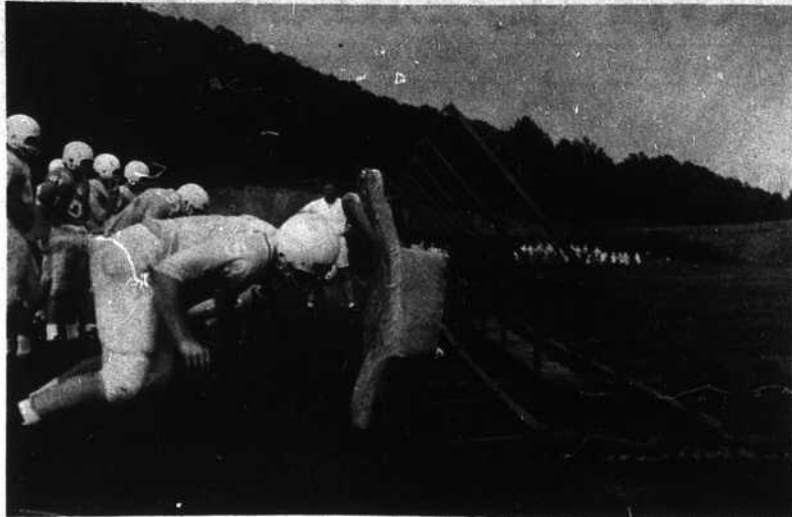
near \$10,000.

Coach Poe passed out season ticket sale packets to the club members who will be handling the pre-season drive. He also handed out large poster schedules for sale and display as well as billfold size schedules provided by the Letterman's Club and the Cheerleaders of the high school.

Selling tickets for the club this year will be Stacy Eggers, Fred Gragg, Hugh Hagaman, James Marsh, Earl Petrey and Harvey Trivette.

It was announced by Coach Poe that Hickory had been dropped from the schedule and replaced by Avery County in a Saturday night game to be played Oct. 19 in Boone. This is the only change from the 1967 schedule.

U.S. protests Soviet charge on role in crisis.



Watauga High linemen work against the seven-man sled in a practice session at the school. Assistant Coach Ken Humphries, a student teacher from Appalachian, directs his charges in the pre-season drills.

Coach Poe Says It's Hard To Make Predictions At WHS

Coach Robert Poe is greatly impressed with the attitude of his Watauga High Pioneers but says that it's "hard to make predictions" about his team's success for the coming season.

Coach Poe, in his fourth season at the helm of the county high school squad, said "the attitude of the boys this year is greatly improved over past years. This will be one of our chief assets this year."

Watauga has around 30 boys out for the varsity. The number has been as high as 37 but last week dropped to the twenties. Injuries have hit two probable starters, Kyle Hollers and Richard Mast, who are both tackling weighing in at 230 and 240 respectively. Coach Poe expects them to see action this season, however.

The Pioneers can boast an experience in the backfield with all four starters from the 1967 team back for service this fall. They will be led by captain Sonny Cook at the tailback position. Cook was all North-western Conference last season. Along with Cook will be quarterback Tommy Dotson, a 6'2" 150-pound signal caller, Craig Riggsby at the fullback slot, and Terry Taylor at wing-

back. Dotson will be backed up by senior Danny Hayes. Poe says that he expects to use Reggie Weber, a senior transfer from New England, at tailback also.

The line will be headed up by J. C. Triplett at center who tips the scales at 170 and is 6'. Triplett is also captain of the Pioneers and was named the all-conference team last season.

In the line, Coach Poe has shifted personnel and has several men at new positions this season. Andy High lettered as a guard last season and will play end this year. The other ends are Gary Ledford and David Bolick. Bolick is the only letterman returning to the end spot. Tommy Pitts and Tony Triplett have been shifted to tackle. Both were ends last season.

Paul Miller, president of the high school student body, and Mark Wilson, both lettermen will run at the guard spot along with junior Dave Dempster.

Poe says his players will play both offense and defense this year. He singled out Greg Nichols as an outstanding defensive safety and J. C. Triplett as being one of the better defensive linemen.

Offensively, Poe plans the stay with the straight T formation but said that he will use some split ends and a pro offensive set also.

"We don't throw a great deal," said Poe, "but we will throw enough to keep the defense honest. We're basically a running team."

"We're always hoping," said Poe in reference to his conference hopes. "We think we'll win our share." With 16 lettermen back Poe hopes to improve on last year's 5-5 record, the best in Watauga's three years.

Of the ten teams in the North-western AAA Conference, Coach Poe named Wilkes Central, Morganton, Marion, and Newton as the teams to beat in the fall. Watauga opens with Morganton Sept. 6.

Poe is assisted on the varsity by Jim Moore, backfield coach; Bob Beaks, line coach; and Ken Humphries. On the junior varsity, Carter Lentz is head coach, and is assisted by Bill Brown and Bob Harmon.

Sports Quiz

1. What nation won the most gold medals at the 1964 Olympics?
2. What country was tops in these medals in 1956 and 1960?

Triple Chair Lifts To Be Used On Beech Slopes

The first triple chair lifts in the South will be in operation at Beech Mountain the time snow flies in December.

A contract for three triple chair lifts was announced today by Harry Robbins, vice president of Carolina Caribbean Corporation.

Carrying as many as 1,800 skiers per hour, the lifts will increase Beech Mountain's present capacity of 3,000 skiers per hour—already the largest in the South—to about 9,000 per hour.

The new lifts, the opening of new slopes, and an increase in what is already the world's largest artificial snow capacity represents expenditures of more than a half million dollars in preparation for the coming ski season, Mr. Robbins said. As a result, he added, "Beech Mountain will offer ski facilities comparable to any in the United States."

Currently the main lift at Beech Mountain is the Italian-made gondola—one of only two in this country. But the new triple chair lifts will come from closer home. They will be built by Goforth Enterprises, Inc., of Shelby, North Carolina. The major ski lift manu-

facturers submitted proposals, but the Shelby firm was selected, Mr. Robbins said, largely on the basis of satisfactory experience with other Goforth installations at Beech Mountain. The longest of the new lifts will stretch 3,600 feet, carrying 1,800 skiers per hour from Beechtree Village to the 5,600-foot summit of Beech Mountain. This lift will serve the 4,600-foot Shawneehaw Shute, the 1 1/2-mile ridge runner slopes and a new 4,000-foot advanced trail.

Also beginning near the Village will be a 2,600-foot lift carrying intermediate skiers to the east ridge where they can ski the more gentle lower two-thirds of the mountain without having to ski down the upper advanced slope. It also will carry beginners and novice skiers to the new five-acre Mid Meadows area.

The third new lift, 1,100 feet long, will serve the Mid Meadows area, specifically designed for beginners and novice skiers.

Ladies' Golf Medal Play

Twenty-six members of the Boone Ladies Golf Association took part in a medal play tournament held Tuesday, Aug. 13, on the home course.

Based on nine-hole scores and low putts on 18 holes, prizes were awarded as follows:

First nine—low gross, Gertrude Perry; low net, Chris Linzy.

Second nine—low gross, Cleone Hodges; low net, Marie Bryan, tied by Lil Patterson and Mildred Farthing.

Putts—Mildred Farthing, tied by Johnnie Crockett.

Bev Russing Realty

Office On Blowing Rock Road

"At the Sign of the Big Red Heart"

RED HEART SPECIALS

1. JUST LISTED: Three-bedroom, two and a half baths; den with fireplace; nice yard; in walking distance of the college.
2. EXCELLENT BUILDING LOT at Boone Golf Course.
3. ACRE LOT on 105.
4. IN BOONE ELEMENTARY SCHOOL DISTRICT—3 bedrooms, 2 baths, living room with fireplace—den—recreation room with fireplace. Acre lot. By appointment.
5. SUMMER CABIN: Over stream—two bedrooms completely furnished.
6. REAL ECONOMY: Summer cabin on large lot. \$5,500.
7. 110' BUILDING LOT on 105.
8. BEAUTIFUL LARGE BUILDING LOT in Forest Hills—first time offered.
9. THREE BEDROOM HOUSE on 1/4 acre lot with oil heat. \$11,000. In Boone school district.
10. NEAR BLOWING ROCK AND PARKWAY: Small cabin and five acres of beautiful land with stream running through property.
11. FOUR-BEDROOM BRICK HOME with full basement and paneled garage on large lot.
12. DEEP GAP: Approximately 54 acres suitable for development with three room house just off highway 221.
13. ONE BEDROOM CHALET, fireplace. Brand new. Off 421.
14. TRACY CIRCLE: Three bedrooms brick home with extra nice view on half acre lot.
15. RED FOX TRAIL—Just completed, two bedroom cutie. Nice fireplace, kitchen appliances furnished, carpet and furnace. Summer or year 'round.
16. MANY OTHER SUMMER HOMES. Come in and ask.
17. Looking for Investment Property? Nearly 50 acres only 1/2 mile from the city limits with many springs and lovely views.
18. ONE BLOCK from main intersection. Three-bedroom house on corner lot; excellent for commercial use.
19. TWO BEDROOM, 1 BATH HOME in Boone school district.
20. TWO BUILDING LOTS reasonably priced in Boone school district.
21. OUT OF CITY— but not far— older house on large lot—two bedrooms with good heating system—room for two more rooms upstairs.
22. FARM: House and good barn and 108 acres of the nicest land we've seen for some time. Much of this land is open and is well watered.
23. ON SKI MOUNTAIN: New three bedroom 1 1/2 bath chalet overlooking the ski run—nice fireplace—good heating system.
24. ONE BLOCK FROM ASU—4 bedrooms—fireplace—large kitchen—excellent for large family or investment—By appointment.
25. BUY YOUR LOT NOW IN BEAUTIFUL DOUGHERTY HEIGHTS LOCATED NEAR ALL SCHOOLS.

CALL DAY OR NIGHT

Bev Russing — 264-9191

P. O. Box 64 — Boone, N. C.

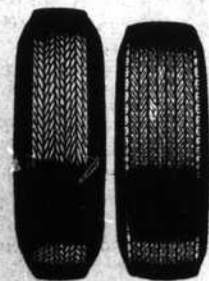
"Service With Sincerity"

taste that beats the others cold!

Pepsi pours it on—pours on the taste that actually gets better as it gets colder. It's a cold fact: Pepsi-Cola is bottled as cold as we can make it so you can drink it as cold as you like it! And cold is the way to really drench a thirst. Prove it for yourself—put it to the taste.



TODAY'S BIGGEST TREAD VALUE!



Wide Oval Tire

Built wide like a race tire. To Grip Better. Corner Easier. Run Cooler. Stop Quicker.

It's not what we get out of racing. It's what YOU get.

The new Super Sports Wide Oval tire. Safest tire we've ever built. Actually developed out of our racing research.

Nearly 2 Inches Wider Than Your Present Tire.

A New Concept Of Tire Safety

Nearly two inches wider than your present tire. Starts faster. Corners easier. Runs cooler. Stops quicker. 25% quicker.

It even takes less horsepower to move than ordinary tires.

VANCE Recapping Company

NORTH DEPOT ST. — BOONE, N. C.