

Happy New Year



WATAUGA DEMOCRAT

An Independent Weekly Newspaper . . . Eighty-Second Year of Continuous Publication

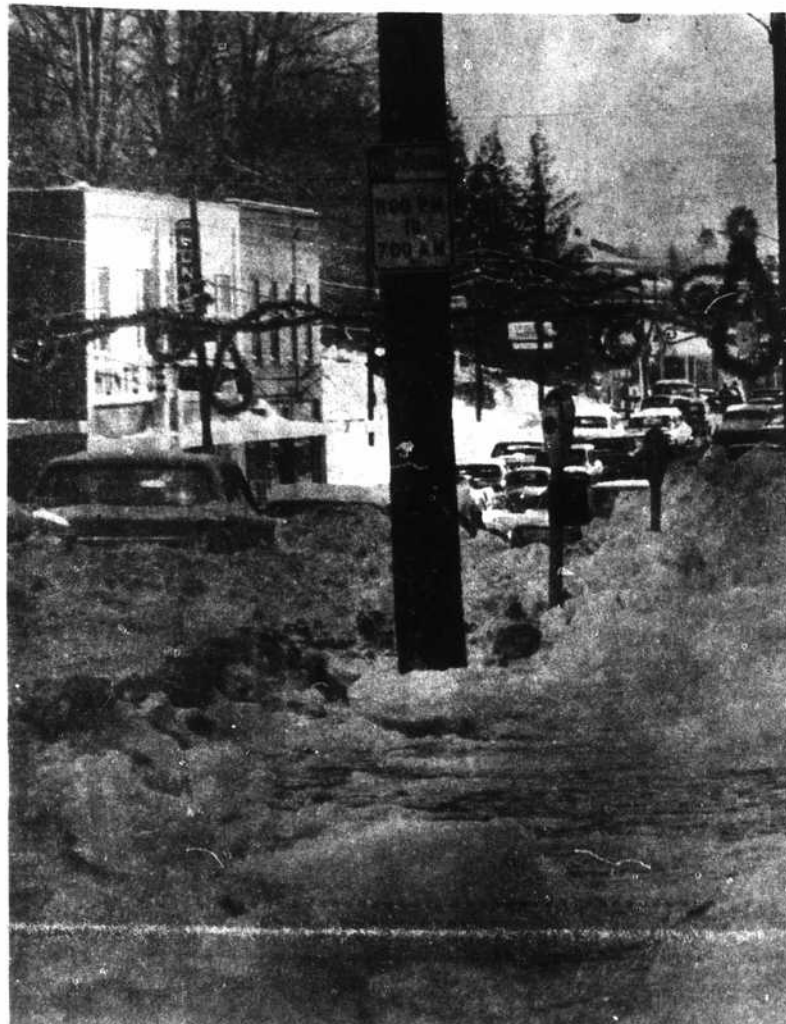
BOONE WEATHER				
1969	Hi	Lo	Prec.	Snow '68 Hi Lo
Dec. 23	37	15		48 17
Dec. 24	34	22	.02	29 16
Dec. 25	32	22	1.46	16-in.
Dec. 26	32	20	.17	2-in.
Dec. 27	30	16		34 19
Dec. 28	49	17		50 25
Dec. 28	49	17		51 31
Dec. 29	47	35		33 23

VOL. LXXXII—NO. 26

BOONE, WATAUGA COUNTY, NORTH CAROLINA, THURSDAY, JANUARY 1, 1970

10 CENTS

20 PAGES—2 SECTIONS



CLOGGED SIDEWALK in business district. (Staff photo)

Holiday Travel Slowed Mountainous Snowfall Closes Local Schools

Highway Forces Battle Gales To Open Roads

Watauga closed out 1969 with a 16-18-inch snow that stymied Christmas travel and closed the schools. High winds complicated its removal.

The year's final snow started during the morning of Wednesday, Dec. 24, with a 2-inch blanket spread for Santa.

But the biggest snow of the year started Christmas morning. When it had finished Friday, it had left an official recording of 16 more inches.

Its removal from streets and highways developed into a five-day-long 24-hour battle by highway maintenance forces.

By Friday morning, highway crews thought they had the problems licked. But high winds developed that blew snow back onto roads all over Watauga County by that night.

Dale Blevins, of the Watauga State Highway Commission office reported that 83 men worked through the five days. They split shifts so that road equipment was worked 24 hours a day. Blevins reported that by Monday afternoon, Dec. 29, all but two roads in the county had been cleared for travel.

The work, he said, involved 40 pieces of equipment.

Piles of snow along King Street in Boone sharply curtailed midtown activity Saturday after stores opened for post-Christmas business. Town crews went to work through Sunday night and had several piles of snow cleared out for near-normal business activity Monday.

Alderman Crater Marsh offered praise for the work done by crews led by David Austin, head of the town's water and sewer department.

The snow brought on a certain two-day holiday for public school students who had been

(Continued on page two)



SWIRLING SNOW and high winds make low visibility on street. (Staff photo)

Skiers Flock To Hills

Thousands of skiers flocked to the North Carolina mountains this past week as most of the ski facilities opened their gates for the first time.

Reports from area slopes recorded record crowds on Thursday and Friday and although a soft snow and wind made skiing difficult, most reported good crowds on Saturday and Sunday.

At Beech Mountain, the largest ski resort in the area, some 3000 skiers were reported using the slopes on Thursday and Friday. A spokesman at Beech reported 18 to 20 inches of snow on the ground at that time.

At Appalachian Ski Mountain a capacity crowd filled the slopes on Christmas Eve and Christmas day with a reported ski base of 18 to 20 inches before the large natural snow

fall on Thursday and Friday. Seven Devils, which was closed Friday and Saturday due to large drifts, reported capacity crowds on Sunday and Monday. The area boasted a snow base of from 7 to 12 inches until Tuesday when a heavy rain closed the slopes.

Hound Ears had a few skiers Friday skimming over the new snow which covered a two-foot base. But conditions were reported poor because of soft snow and wind gusts.

The new resort at Sugar Mountain said the snow kept employes away and they rescheduled their opening sometime after the first of the year.

Reports from most of the ski facilities in the area on Tuesday were that skiing was poor due to the rain that fell

on Monday night. All area managers feel that this will be the greatest ski season ever and according to one spokesman, "all we need is a little cold weather."

To Close For New Year's Day

Most of the stores in Boone will be closed today (Thursday) on account of the New Year's observance.

All Boone and County offices will be closed, except the Magistrate's office at the courthouse will remain open.

Both banks will be closed, along with the Watauga Savings & Loan Association and the post-office.

Child Killed In Christmas Accident

Investigation is continuing into the Christmas Eve accident on old highway 421 west of Boone in which five-year-old Teresa Lynn Walls was killed.

Patrolman Robert Bowlin said it will be next week before he completes his investigation into the head-on crash between the Walls car and a truck driven by Noah Vernon Shelton, 42, of Route 1, Vilas.

Bowlin said it was the 12th traffic fatality for Watauga County during 1969, a new high record for the county.

The child apparently was killed instantly. She was pinned in the wreckage of the 1966 Chevrolet in which she was riding with her parents. Her body was removed by the Watauga County Rescue Squad. The crash occurred six miles west of Boone.

The girl's parents, Robert Clay Walls, 24, and Linda Ward Walls, 23, of Route 1, Vilas, and Shelton were admitted to Watauga County Hospital. They were released Saturday.

(Continued on page two)



AT SCENE of fatal accident. George Flowers Photo.

More Watauga Women Are Employed Outside

For a growing number of married women in Watauga County, running a home and raising a family are only part of their activities.

With each passing year, more and more of them are finding that they can take care of their household responsibilities and still have enough spare time to permit them to take outside jobs.

As a result, locally and else-

where, the proportion of wives at work—in offices, stores, factories and in professional occupations—is at an all-time high.

In Watauga County, an estimated 37.4 percent of the married women are now employed, according to the latest statistics. This compares with 28.4 percent in 1960.

On the average, throughout the United States, in more than 1 out of every 3 husband-wife families, the wife is employed, either part-time or full-time.

Burley Sales To Be Resumed

Reynolds Bell, chairman of the Burley Sales Committee, announces that the sale of Burley tobacco shall be resumed on Thursday, January 8, instead of Monday, January 5.

This decision was made by the Burley Sales Committee in a telephone conference at ten o'clock on Saturday morning, December 20.

The Sales Committee considered the situation existing in all areas of the Burley Belt and determined that this later re-opening of the Burley Tobacco Market was needed to enable the tobacco re-driers to move a sizeable volume of sold tobacco off the warehouse floors before the market re-opens after the holidays.

scale generally.

The increase in the number of working wives reflects only part of the changing pattern of women's attitude toward economic self-sufficiency. The proportion of single women in jobs has also been going up.

Between 1950 and 1968, it is shown, the number of working women rose 60 percent, although the number of men employed

went up only 16 percent.

In Watauga County, similarly, there have been marked changes. The proportion of working women has been edging up steadily.

In 1960, when the last census was taken, there were 1,675 local women in the labor force, or about 25.0 percent of the female population over 14. There are now approximately 29.3 percent.

Purse Found At Yule Tree: \$600 Is Returned To Owner

Tommy Jones, in addition to being the father of four proud children, and an employee of a local tire re-capping firm, is known as "Mr. Honest" about Boone.

And his Christmas season good deed might not have been known to newspaper readers and radio listeners across the United States.

Jones and his family visited the Community Christmas Tree in Boone on Wednesday, Dec. 17. Before they left the area, he found a woman's purse containing \$600 in cash. Shortly thereafter Mrs.

Georgia Mast suffered the heart-quickenng discovery that she had lost her purse. The \$600 represented a payment for a hospital bill, Christmas presents and \$400 for her 16-year-old son's savings.

Saturday morning Jones, responding to a radio appeal for the purse's return, agreed to meet Mrs. Mast at a beauty parlor to hand her the purse and its contents. The only address in the purse had been a California address.

Jones, who lives on Route 4, Boone, declined to accept the \$100 reward offered by Mrs. Mast.