

Population
Watauga County 22,660
 10 Year Gain 29.27%
Boone 8,566
 10 Year Gain 132.39%
 1970 Preliminary Census Report

WATAUGA DEMOCRAT

An Independent Newspaper Serving The Northwest Carolina Mountain Area

Boone Weather						
	1970	Hi	Lo	Prec.	Snow '69	Hi Lo
Dec 21	56	38	27			32 16
Dec 22	56	42	27			34 23
Dec 23	59	46	36			37 15
Dec 24	55	23	35			34 22
Dec 25	40	20				33 22
Dec 26	31	8	.08	1.5		32 20
Dec 27	30	10		inch		30 16

83rd YEAR—NO. 26

BOONE, WATAUGA COUNTY, N. C. THURSDAY DECEMBER 31, 1970

10 CENTS

16 PAGES — 1 SECTION



Watauga County: Christmas Week, 1970

Impact Of Inflation Noted In Watauga

A Watauga County family must have considerably more income to be able to buy as much in the market place as it did four years ago.

The local impact of continuing inflation is contained in data obtained from the Department of Labor, the National Industrial Conference Board and others. In the four-year period, they show, the cost of the standard market basket of goods and services has gone up nearly 22 percent.

The rise this year was a record-breaker, about 7.1 percent, according to preliminary figures. It topped the 1969 increase of 6.5 percent, the 1968 hike of 4.9 percent and the 3.2 percent rise recorded in 1967.

Because of the erosion in the value of the dollar, the average Watauga County family finds that it takes nearly \$5 now to buy the same amount of goods and services that could have been obtained for \$4 in 1966.

Specifically, for the family that had an income of \$5,000 four years ago, approximately \$6,080 would be required today. Those that had \$6,500 available to them at that time need \$7,900 now.

Families that were in the \$7,500 bracket have to

have \$9,100 currently and those at the \$10,000 level, nearly \$12,200.

As a result, for the unemployed and for those who are living on fixed incomes, the going is increased amount of money that has to be spent in \$6,013 per local family. This was considerably more

Although many people feel that the higher price of food is causing them the most trouble, that is not borne out by the facts, according to the Department of Labor. Its studies show that taxes have been rising faster than any other item in the average budget. Medical care and other services are not far behind.

The upward thrust in the cost of living has affected consumer prices across the board in every area of the country.

An indication of it, in Watauga County, is the increased amount of money that has to be spent in retail stores in relation to previous outlays.

In the past year these expenditures amounted to \$6,013 per local family. This was considerably more than the same amount of goods would have cost four years earlier, \$5,170.

Watauga Winners Listed In Christmas Lighting

Christmas was extra bright this year for four residents of Watauga County, and Christmas lights helped to make it so. The four are winners of Blue Ridge Electric's outdoor Christmas lighting contest. They were selected by a panel of member judges on Tuesday evening, December 15 following two nights of viewing and scoring the exhibits.

There were four categories in the contest; the best overall lighted lawn; storybook creations, religious scenes, and Christmas trees. In each of the first three classifications, the theme of the display, artistic merit and lighting techniques are points which carry considerable weight in the point judging for the winner.

Mrs. Nora Wilson won the best overall lighted lawn award in Watauga County with her decorations of miniature blue lights outlining the front of her house and garage. In the center of the display was an archway with a madonna. Each front window held electric Christmas candles which Mrs. Wilson had made. A Christmas star, outlined with miniature lights was displayed on the carport, and in the background a large Christmas tree was lighted with pretty miniature lights.

The prize for the storybook creation was awarded Everett Cole of Route 2, Boone, for his "Night Before Christmas" display of Santa, on the chimney, the reindeer and sleigh and Santa's pack, all on the roof of the house. The scene was lighted by flood lights.

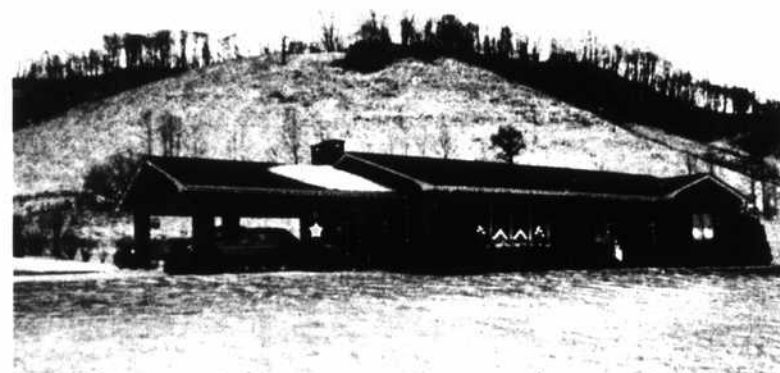
Mrs. Jesse Burns of Blowing Rock received the award for the best religious scene. Her display of the Nativity was tastefully done with large internal illuminated figures of the baby Jesus, Mary, Joseph, the wise men and the shepherds. The display was set against a background of natural shrubbery and was lighted with white and colored flood lights.

Mr. Lee Anderson of Route 3, Boone was the winner in the "Christmas Tree" division of the contest, with his colorfully decorated "twin trees" which were lighted with multicolored



Win Christmas Decorations Contest

Receiving the first place check from Neil Faries, local manager of BREMCO, which sponsored the Christmas Decorations Contest here, is Mrs. Odes Wilson of Zionville. Other winners are Mrs. Everette Cole, Mrs. Lee Anderson and Mrs. Jessie Burns.



Mrs. Wilson's home at Zionville is seen in this late evening picture. (Photos—George Flowers)

(Continued on page two)

Cold Brings Skiers By Hundreds

To the delight of ski resort operators, clothing and equipment shops, and their patrons, cold weather arrived Christmas week.

During the weekend, thousands of skiers were back at their favorite sport, and more hundreds of beginners were taking lessons and about half-consumed with the snow-going fever.

Snow machines were going full blast at Appalachian Ski Mtn., Beech Mountain, Seven Devils and Sugar Mountain and members and guests of Hound Ears Lodge and Club were navigating the down-hill white.

Along about the middle of the month, it was cold enough to get snow-making machinery in operation at some of the resorts, but the mercury kept rearing its ugly head and foiling most plans for an early opening.

Scattered through this issue are a few photographs of some weekend events in the "Ski Capital of the South"—some notes in black and white on the colorful sports clientele.



Loses Life In Crash Thursday

Mrs. Winnie Nelson Howell, 52, of 334 Blowing Rock Road, died Thursday morning at Blowing Rock Hospital from injuries received in an automobile accident Wednesday afternoon, Dec. 23, on

U. S. 421 in Boone. She was a passenger in a 1963 Oldsmobile driven by her husband, Mr. Vance Cyrus Howell, 77. In his report, Boone policeman Billy Rush noted that Mr. Howell said he was attempting to turn right from U. S. 421 at Perkinsville onto N. C. Highway 194 when the accelerator pedal lodged and sped the car out of control.

The vehicle hit the traffic island, knocked down two highway signs and veered over a low bridge embankment, coming to rest in Buckeye Creek. The accident happened shortly after 2 in the afternoon and damages to the automobile were \$500.

Mr. Howell was hospitalized for treatment of injuries and released the following day.

The late Mrs. Howell, a registered nurse who was employed at the Blowing Rock Hospital, was born in Mecklenburg County.

She is survived by her widower and by her mother,

(Continued on page two)

Photo—Rachel R. Coffey

Down The Snow

Garbage Collection Schedule

The garbage for all town residences on a once-a-week schedule will be picked up, weather permitting, the usual way on New Year's Day and Saturday, the day after.

Where necessary, the large containers scheduled for Friday and Saturday pick up will be picked up on Saturday, Jan. 2.

The Town Hall will be closed on New Year's Day but will be open until noon on Saturday.



Happy New Year '71

