

Edentonians

50 Years Ago

Capt. Wm. B. Shepard

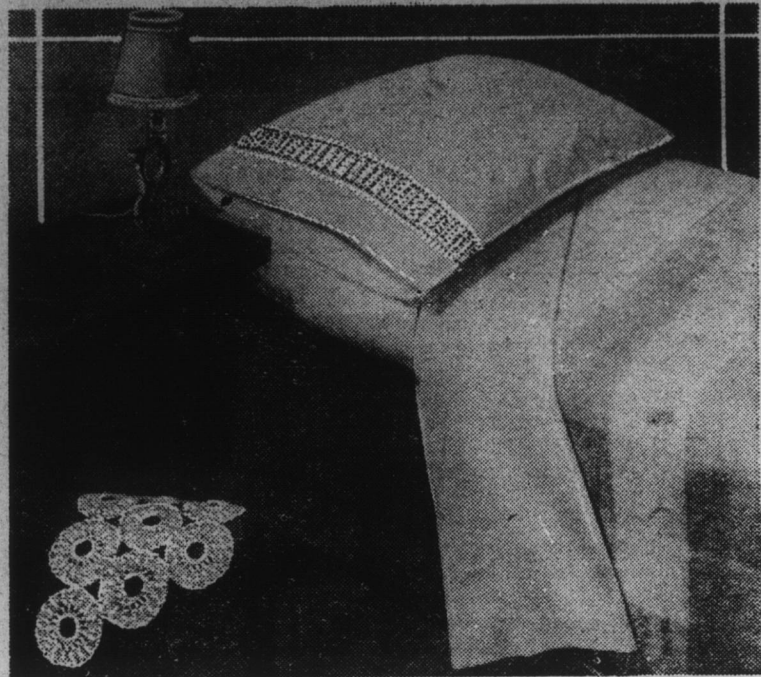
This is another sketch in a series of write-ups about prominent Edenton people 50 years ago, taken from "Historical and Descriptive Review of the State of North Carolina," published in 1885:

Capt. William Blount Shepard, a bulwark of the material prosperity and social standing of Chowan, is regarded as one of the most successful farmers in this section. Both his farms are located in this county, are worked on the hired labor system and to them he gives his undivided personal attention. In one he has 450 acres cultivated and some 500 acres uncleared land, while the smallest one has 130 acres cleared. He raises crops which are a fine advertisement of the quality of land and the profit that can be made by tilling the soil of this country. He raises some seventy-five bales of cotton and 5,000 bushels of peanuts, in an average year, besides corn, oats, rice and other small grain. He runs fifteen mules, three horses and employs on an average between thirty and forty hands; he has also recently gone into the life insurance business and represents the far famed Connecticut Mutual and Equitable of New York, is rapidly building up a comfortable custom. He also buys cotton at this point, shipping mostly to Norfolk.

Mr. Shepard is a native of Elizabeth City; his father (who represented this district eight years in Congress), died when he was only seven years old, and his sister shortly after removing to Edenton. When the war broke out, though only a boy, he volunteered his services and was on the staff of General Pettigrew till that gallant officer was killed; he was then in artillery and later in the ordnance department. In 1867 he commenced farming, in which he has been ever since engaged, amassing large and well won profits.

His residence, commanding a magnificent view of the sound, has been in his mother's family over 100 years. He first married Miss Harrison, of Alabama, by whom he has two children, and secondly a daughter of Hon. Paul C. Cameron, of Hillsboro who has given him one more; he commanded the Albemarle Guards for several years; he is master of the Ancient Lodge of Masons here, is a K. of H., Senior Warden of the Episcopal Church.

"I Made For My Bedroom..."



(Being The Domestic Secrets of An American Housewife.)
By NATALIE ABBOTT

WHEREVER I live, whether its in a hovel or a mansion, there's one room I always want to have just as I want it and that's my bedroom. This isn't so hard as it sounds, because I want my bedroom to be furnished simply and in good taste with things that I have made myself, things which I can be proud of because I created them. I like the homey touch which these hand-crocheted articles gave to my bedroom. The crocheted insert on the pillow case is matched by a mat for the arm of the chair and a lamp shade made entirely of very fine mercerized crocheted cotton. Any woman can make this insertion for her pillow case and she doesn't have to be very expert either. Here is how it is done:

Materials: Mercerized crocheted cotton size 30 or 50; steel crocheted hook No. 6, 7, or 8. To begin, ch 37, turn. 1st row: 1 d c in 9th ch from hook, * ch 4, skip 4 sts of foundation ch, 1 d c in next st, and repeat from * till there are 6 sps made, ch 2, 1 d c in last st. Ch 6, turn. 2nd

row: Skip 1st sp, 6 d tr (thread over 3 times) in 1st d c of previous row (this forms a shell), * 1 sl st in next d c, ch 4, 5 d tr in same st in which sl st was just made, and repeat from * 3 times (now you will have 5 shells in all), 1 d c in next d c, ch 2, skip ch-2, 1 d c in next st, ch 6, turn. 3rd row: 1 tr in 1st d c of previous row, ch 4, 1 d c in point of 1st shell, * ch 4, 1 d c in point of next shell and repeat from * to last shell, ch 2, skip ch-2, 1 d c in next st, ch 5, turn. 4th row: 1 d c in 1st d c of previous row, * ch 4, skip ch-4 1 d c in next d c, 4 d c in ch-4, 1 d c in next d c, and repeat from * once, ch 4, skip ch-4, 1 d c in next d c, ch 2, skip ch-2, 1 d c in next st, ch 5, turn. 5th row: 1 d c in 1st d c of previous row, * ch 4, skip ch-4 of previous row, 1 d c in next d c, ch 4, skip 4 d c, 1 d c in next d c, and repeat from * once, ch 4, 1 d c in next d c, ch 2, skip ch-2, 1 d c in next st, ch 6, turn. Repeat from 1st to 5th rows incl for as many inches as desired.

It is easier to get a good bleed when the system is not gorged with food and the meat always cures better when the small blood vessels are free from blood and food particles. The animals, however, should have plenty of water before them at all times so as to flush out the intestines.

Question: Will the use of artificial light increase egg production?

Answer: This method of stimulating production is being used with success in many parts of the country. The use of artificial lights is to lengthen the feeding hours which will increase mash consumption and this will naturally increase egg production. The lights should be so regulated that the birds have from 12 to 14 hours a day in which to eat. Be sure that the entire house is well

lighted. Two 40-watt bulbs for each 400 square feet of floor space will give sufficient light provided that each bulb has a reflector about 16 inches in diameter and four inches deep. Extension Circular No. 158 gives the various systems of lighting most commonly used and this can be secured free upon application to the agricultural editor at State College.

Question: Who pays the processing tax on cotton?

Answer: This tax is paid by the consumer when any product manufactured from cotton is purchased. It is added to the manufactured article before it is sold to the retail merchant. The rate is 4.2 cents a pound net weight of cotton used in the manufactured article. The average amount paid by the consumer is

about 8 cents on sheets; 3 1-2 cents on a work shirt; 8 1-4 cents on a pair of overalls and about one cent per yard on unbleached muslin.

Masons To Hold Past Masters' Night Dec. 6

A large crowd was present Thursday night at the regular meeting of Unanimity Lodge, No. 7, A. F. & A. M., at which time it was decided to call off the meeting this Thursday due to Thanksgiving.

The lodge decided to observe Past Masters' night on Thursday, December 6. This occasion is always looked forward to with a great deal of interest, the various stations and places being filled by past masters of the local lodge.

Refreshments will be served on this occasion and past masters, as well as present officers of Perquimans Lodge, No. 106, in Hertford will be invited.

A. S. Hollowell, master of the local lodge, is very anxious for a large attendance at this meeting, which always proves to be an enjoyable affair.

In Memoriam

In loving memory of our dear wife and mother, Mary Christian White, who departed this life three years ago, November 22, 1931:

Three years have passed since you left us,

Left without saying goodbye; Since we stood over your casket with tears in our eyes.

For we knew we were going to miss you,

Wife and mother we loved so well, And the kindnesses bestowed upon us Too numerous to tell.

We have been sad and lonely Since you went away, You have been in our thoughts Every minute of the day.

We have longed to see you, Wife and mother so true, Who had a smile and kind word For everyone she knew.

We have placed a monument on your grave

As a token of our love, Though we know you are not in Beaver Hill, But an angel up above.

But now we are not grieving For we know you are at rest For the dear God who created us Sees and knows what is best.

—Written by her daughter, Mary W. Spencer, expressing the feelings of S. J. White and family.

Growers Will Decide Fate Of Bankhead Act

Two-thirds Vote Needed For Continuance Of Cotton Measure

The fate of the Bankhead Act will be put squarely up to the southern cotton growers in the referendum to be conducted in December, says Dean I. O. Schaub, of State College.

If two-thirds of the growers vote for the act, it will be continued in 1935 on an improved and more flexible basis Schaub says. Otherwise, it will be discarded.

Since some form of crop control will be necessary to save cotton growers from a return of ruinous prices, he says, the adjustment contracts which were signed on a two-year basis for 1934 and 1935, will be continued in force regardless of the vote on the Bankhead measure.

Experience gained during the first year of the act's administration will enable the AAA to prepare a more efficient and flexible method of administering the act another year, Schaub adds. Changes in the policy of administering the act are now being planned.

The allotments under the act, if it is continued, will be somewhat larger than this year. The contract allotments will be around 25 per cent larger next year, as the maximum reduction that can be called for under the contracts is 25 per cent below the base average.

In voting on the act, Schaub says, the grower will not be voting for a certain allotment or tax rate, but on the question as to whether the secretary of agriculture shall have the power to make allotments and levy a

tax on excess cotton.

The act does not set a fixed allotment for each grower or the amount of tax to be paid on excess production, but empowers the secretary of agriculture to determine the allotments and the tax by the needs of the market.

COLLEGE PRESIDENT HERE

Dr. Charles E. Brewer, president of Meredith College, spent Tuesday night in Edenton as guest of Mr. and Mrs. George Lassiter, at the Hinton Hotel.

Cotton PEANUTS

SUFFOLK

SEND YOUR COTTON AND PEANUTS TO US IN SUFFOLK, WHERE THEY WILL BRING HIGHEST PRICES WHEN YOU WANT TO SELL. FIRST CLASS STORAGE AND LIBERAL CASH ADVANCES.

Richard Winborne, Jr.

Manager Warehouses

Winborne & Co.

and

J. W. Perry Co.

BAYVIEW BARBER SHOP

ERNEST L. WHITE, Prop.

HAIRCUT 35c SHAVE 15c
MASSAGE 35c SHAMPOO 35c

PROMPT, EFFICIENT SERVICE AT ALL TIMES

104 East King Street

Edenton, N. C.

Timely Questions On Farm Answered

Question: Should hogs be taken off feed before they are killed?

Answer: Yes. The animals should not have any feed for at least 24 hours before they are slaughtered.



When You Leave A
SHELL STATION
You Leave With Confidence

By Using

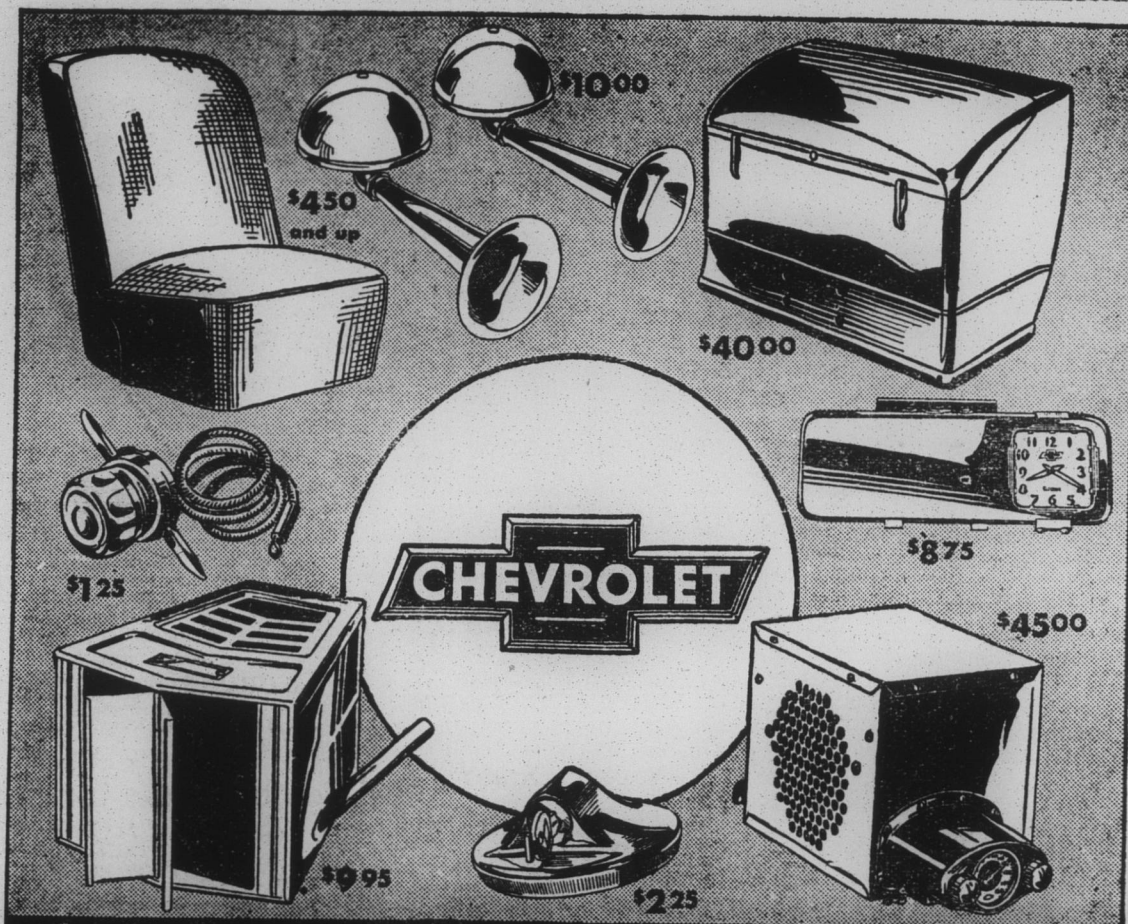
**Super-Shell Gasoline
and Shell Motor Oil**

You Can Be Assured Of A Smooth
Running Car.

Tom's Service Station

Broad Street

Edenton, N. C.



Equip your car with
GENUINE CHEVROLET ACCESSORIES

WE SPECIALIZE IN CHEVROLET OWNERS' PROTECTIVE SERVICE with
SPECIAL TOOLS AND EQUIPMENT
FACTORY TRAINED MECHANICS
GENUINE CHEVROLET PARTS
GUARANTEED WORK AT FAIR PRICES

THE BEST AND MOST ECONOMICAL ACCESSORIES YOU CAN BUY—MADE ESPECIALLY FOR CHEVROLETS

CHEVROLET accessories are Chevrolet products through and through—designed by Chevrolet in accordance with the very latest developments in engineering and style, and built for Chevrolet to the same high standards as all Chevrolet cars.

The prices of these quality accessories are amazingly low, due to Chevrolet's great purchasing power and large sales volume.

Save Yourself MONEY—TIME—INCONVENIENCE
BRING YOUR CAR TO US FOR AUTHORIZED LOW-COST SERVICE

CHOWAN MOTOR CO.

Edenton, N. C.