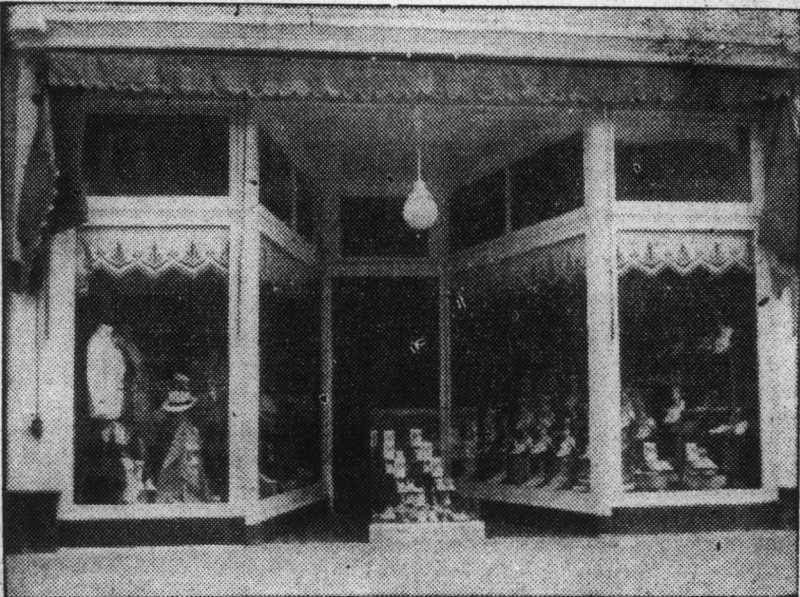


J. H. Holmes & Company Department Store

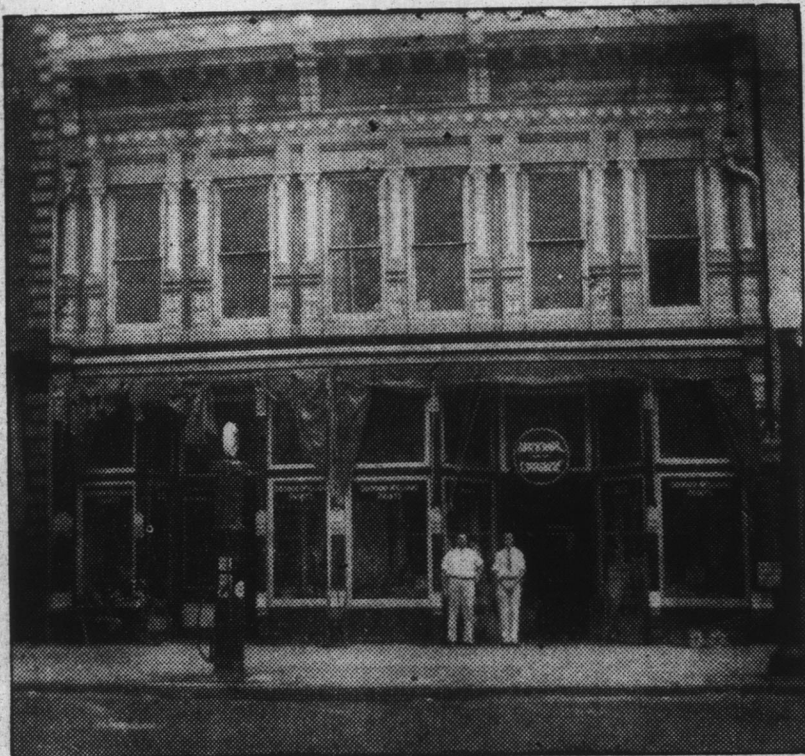


One of the most modern and completely stocked department stores in the Albemarle section of North Carolina. A credit to a metropolitan city and the center of the retail shopping of this section of North Carolina.



Here is the entrance to the men's, boys' and shoe department, where great numbers of shoppers from a wide section depend upon being served for their needs.

Home of T. W. Jones Hardware Co.



T. W. Jones Hardware, Plumbing and Heating Contracting business is conducted from this modern building, located in the heart of Edenton's business district. The business was established more than 50 years ago. Mr. Jones bought and has operated it since 1936.

One of Edenton's Newest Residences



The handsome residence of A. G. Byrum nearing completion, which is being built by the firm of Norris & Hatten, custom contractors, who have built a large number of fine homes in Edenton and the Albemarle section.

Gulf Station Distinct Credit To Albemarle

One of Most Modern and Scientifically Designed to Be Found In Albemarle Section

One of the most modern service stations in the Albemarle section of North Carolina is the Gulf Service Station located at the corner of Queen and South Broad Streets at the point where U. S. Highway No. 17 makes a turn in the heart of Edenton. The station has been in operation since 1934, but it was in 1937 that the present modern and attractive station was built on a lot approximately 15,000 feet square.

Guy C. Hobbs, who has been identified with the service station business for many years, is manager of the station which has every new and modern feature, including heated and tiled rest rooms, free parking space for more than 50 cars, large wide runways, six gas pumps, washing and lubrication equipment and a complete Champion Spark plug service.

In addition to a complete line of the famous Gulf products, which includes gasoline, oils, lubricants, and accessories, the station handles and is agent for the well-known line of National Insured brand of tires.

One of the most attractive stations in the section, it is kept in excellent condition, clean and inviting to motorists and car owners and the service maintained is well up in the 100% class.

Associated with Mr. Hobbs in the operation of the station as assistant is Mr. Zack Robertson, an experienced and capable service station operator, and two other attendants.

Every form of service, except mechanical repairing, is available to car owners. Washing, lubrication, polishing, tire and road service can be secured at this modern station, one of the finest handling Gulf products in this section of the Carolinas.

Ferry Makes Final Run On August 14

(Continued from Page One) centuated by the advent of the new bridge.

Even the less mature of the Edenton citizenship can well remember the ferry's start back in 1922, when it was organized, chartered and franchised. As preliminary to a permanent operation the local Chamber of Commerce, then active and eager to sponsor much, stood as such for the ferry's start in an effort to ascertain its feasibility.

The initial operations were auspicious and Dr. H. M. S. Cason and W. A. Everett, who has stuck from then until now, took over the ownership control on a 50-50 basis. Upon Dr. Cason's death his interest was bought by Everett, Capt. Cage Hayman and the late Capt. G. W. Spry, and at Capt. Spry's death, Everett and Hayman took over and have remained the ferry chieftains since.

Five sturdy craft, some small and others large, have kept the line going from the outset. They were, in order of operation, the "Pilot," which soon got into the hands of federal authorities in anti-ABC days, and was succeeded by the "A von Nyvenheim," which faced even a worse predicament, being destroyed by fire in 1932. Both these losses entailed a considerable drop in the operators' exchequer, but even so they carried on, "Shady Side" and the "Emperor" being two craft pressed into service ahead of the last boat, the "Frances Harrington," which has been going along for three or four years and which came here after service in the Chesapeake Bay.

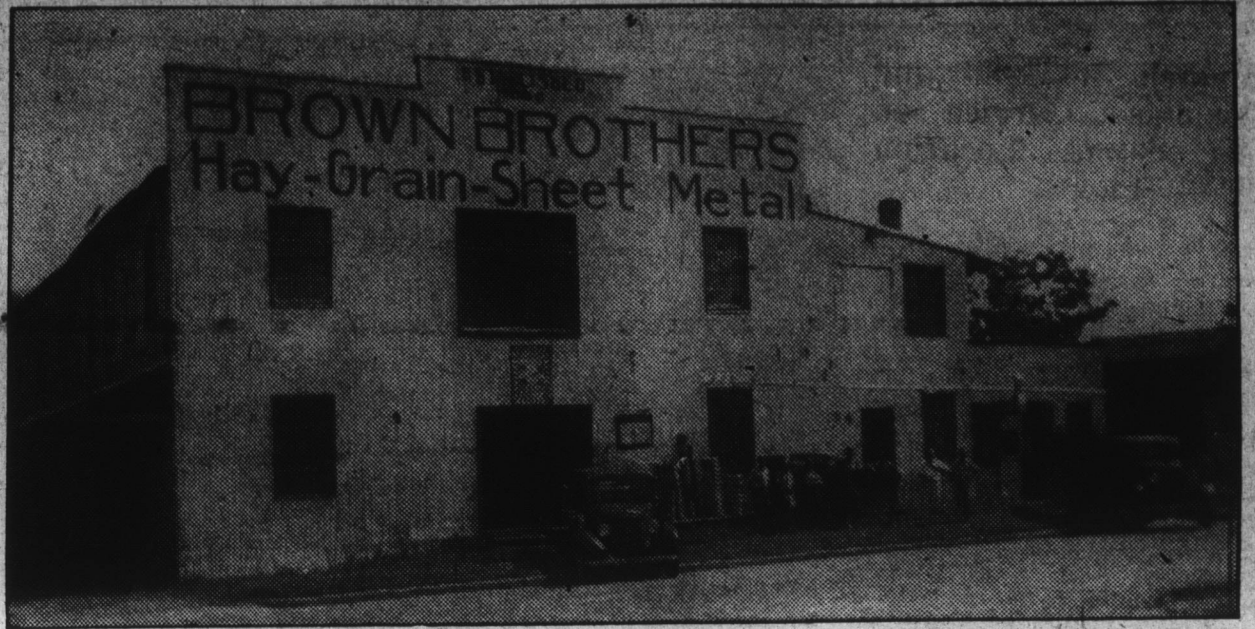
The ferry has been both a paying and a losing proposition. There were years when it showed a big balance on the favorable side of the ledger during which years business has been so heavy the line had to make as many as sixteen trips daily. But with the advent of the Chowan river bridge and the rumblings of further ferry disaster because of the great Sound span, business has suffered much.

Two years ago Mr. Everett and Mr. Hayman had, but little difficulty in convincing the Highway Commission they should be given financial aid if they were to be expected to keep the line open. At first they received \$300 a month and later this was cut to \$200 monthly, just about enough, no more, to keep the boat in oil and gasoline and pay the help. This has been termed a subsidy, and actually it might be so referred to, but the operators view it as pay for commission ferryage during the construction of the big bridge.

Edenton mourns the departure of the ferry, sympathizes with its owners, and would like to do something to ease the tension. There has been no whimpering, however, on the part of Everett or Hayman, so the situation remains unsolved.

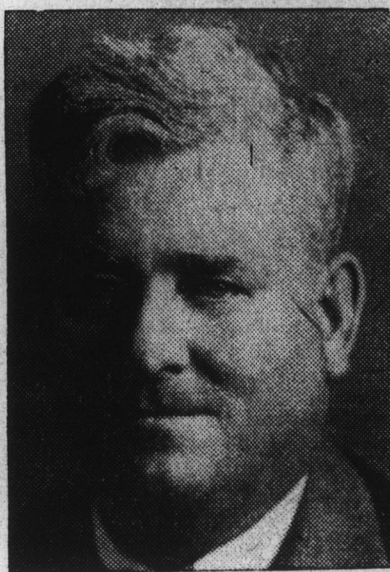
The ferry made its last scheduled trip Sunday, August 14, when the new Albemarle Sound bridge was opened to traffic.

One of Oldest Firms In Albemarle Section—Established In 1886



Since 1886 this organization, founded by the late W. H. Brown, has continuously served the people of Chowan County and the fine section of the Albemarle. Today it is successfully operated by a descendant, Oscar H. Brown, son of the founder, and enjoys a wide patronage. The firm handles a general line of feed and seed, including the Wayne brand, and is distributor for the famous line of Johns Manville asbestos Roofing.

Officials of the Quinn Furniture Company In Edenton



W. M. WILKINS



T. B. WILLIFORD



J. R. BYRUM

W. M. Wilkins, from Duplin County and one of the organizers of the company has been an Edentonian since 1925.

T. B. Williford, a native of Bertie County, and connected with the Quinn Furniture Company for the past 12 years.



M. M. PERRY

J. R. Byrum joined the organization in 1935, and is one of the most experienced furniture men in the Albemarle section.

M. M. Perry, another Chowan County native, has been with the company for more than five years.

A Modern Laundry In a Modern City



Not only does the Edenton Laundry serve the people of Edenton, but extends its service to cover a radius of from 50 to 75 miles. The concern has kept pace with modernization and has one of the best equipped laundry plants in the Albemarle section. The success of this plant can be attributed to C. P. Wales, who has been most devoted to rendering quality service to patrons of the laundry.

Demonstration Clubs Play Important Role

(Continued from Page One) county. The Home Demonstration clubs meet once each month, and 4-H clubs meet twice each month from September through May.

The chief factors considered in planning a program of work are the needs and wishes of the people. An effort is made to plan and follow long-time programs, and to rotate projects. Major projects are selected by the club members, through their officers. Each project is carried for a period of two years, and certificates are given to those women who carry out the program as planned. Local clubs have project leaders, appointed by the president, who are trained in special meetings during the year. At present the major project is Home Management, and in connection with this a Kitchen Improvement contest is being conducted to help the women to have more convenient and attrac-

tive kitchens. These women are planning kitchens that will give the maximum amount of work with a minimum amount of activity.

Minor projects in the clubs this year are Home Beautification, Clothing, Foods and House Furnishings. In connection with the Home Beautification and Improvement Program the women took an active part in the Better Homes in America Campaign, helping to win for Chowan County a Merit Award, given by the national committee.

The County Council of Home Demonstration clubs is a very necessary organization composed of the officers of each club, and serving as an advisory board to the home agent. These women know the needs and interests of their communities which makes their advice invaluable. They are efficient, and help, not only in planning the work, but in carrying out their plans, because they are chosen by their club members for their ability and leadership.

In addition to regular club pro-

jects pertaining to all phases of home-making, one or two tours have been conducted each year for the past four years. These are both recreational and educational and have included several trips to Washington, D. C., Roanoke Rapids mills, State Fair, Williamsburg, Yorktown and Jamestown, and the mountains of North Carolina.

Following the 4-H club motto—"To make the best better," with that of the women—"Character, Courage, Culture and Citizenship," must have much to do with making the homes in Chowan County better places in which to live.

FREEZE NEAR EQUATOR

Guayaquil, Ecuador.—Three Indians and many cattle were frozen to death by unprecedented cold in the Province of Canar, although it is only a short distance from the Equator.

Italy will pursue sharp race policy, Fascist secretary announces at meeting.