

Peanuts Is An Important Industry

EDENTON PLANT HANDLES OVER 300,000 BAGS OF HIGH GRADE PEANUTS ANNUALLY

Peas Shipped to All Corners of World; Albemarle Product Renowned For Quality; Millions of Dollars Paid to Growers

As evidence of good management and dealings with the peanut growers of Chowan County and the Albemarle section, the Edenton Peanut Company, processors of peanuts, is rounding out its 29th year as successful processors, buyers and shippers of peanuts, and with practically the same officers the corporation elected when the mill was organized and began operations in 1909.

Originally built to handle 300 bags of peanuts per day, production in the Albemarle area has gradually increased. New buildings were added, more machinery installed, and today the plant is equipped with the most modern type peanut shelling and cleaning machinery, having a capacity of more than 1,500 bags for each 24 hours, and affords employment, during regular operating season, from 250 to 300 local people.

The organization is headed by Mr. W. D. Pruden, president; Mr. Julien Wood, vice president; Mr. Thomas Chears, vice president and manager, and Mr. James E. Wood, secretary-treasurer.

The mill when built had a capacity of 300 bags per day. Since 1909 growing of peanuts in the Chowan and Albemarle section has steadily increased and now the plant, in peak years, handles more than 300,000 bags of peanuts, buying, processing and selling, thus turning back to the farmers, or producers of this section a large portion of the more than \$18,000,000 which is the conservative value placed on the crop grown in the Virginia belt, plus large amounts in payrolls.

In addition to processing, shelling and cleaning of the peas, the company maintains a year round market

for peanuts, storage and warehousing facilities, advances commodity loans to growers who do not wish to sell their crop, desiring to hold for prospective higher prices. The plant ships shelled and cleaned peanuts to all points of the United States, while, according to statements, its best markets are in California and Chicago, the latter being the largest peanut buying market in the world.

The plant is housed in a five-story brick building and has four large storage warehouses for handling the crop grown in this section and marketed in Edenton.

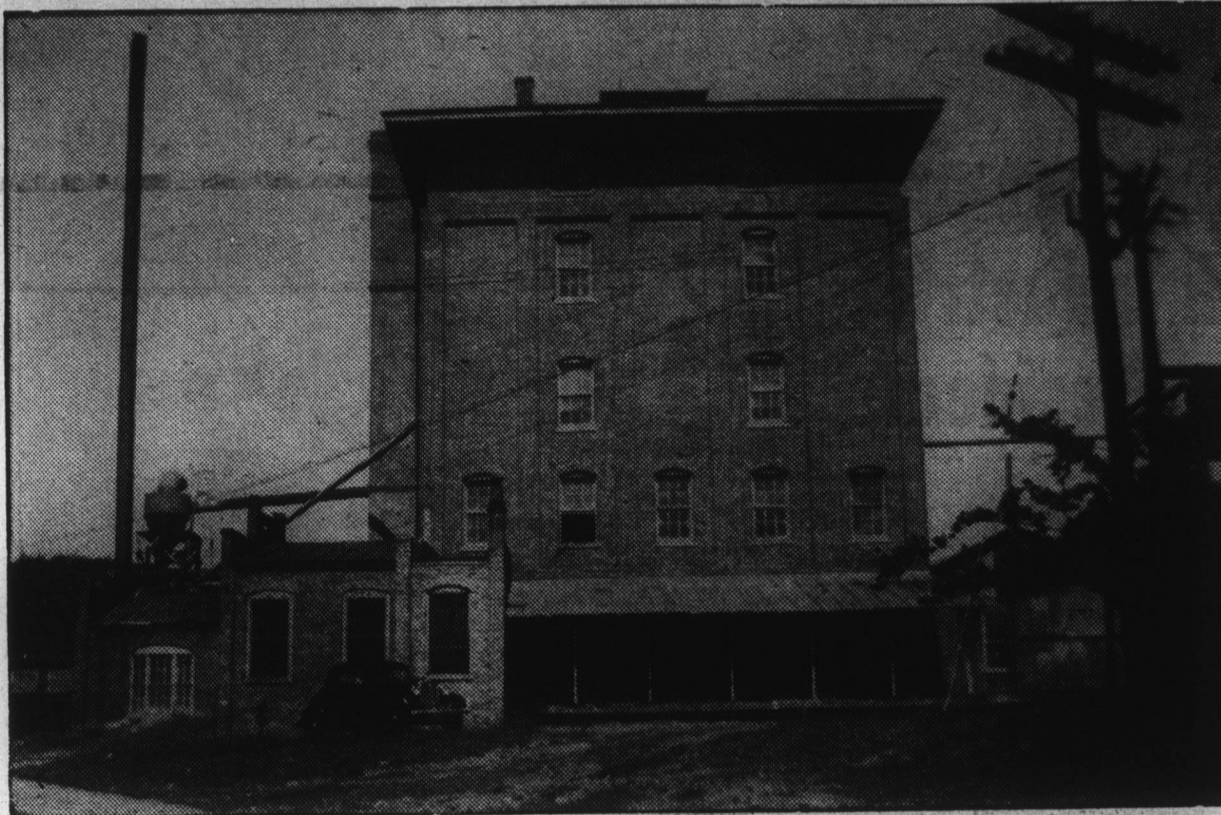
Progressive and Fast Growing Town

(Continued From Page One) supremacy of Edenton, but none of them succeeded in doing so until the advent of the railway and telegraph. With the coming of these two agencies of commerce the scene rapidly began to change. The tempo of the times was greatly accelerated and industrialism rapidly overtook and dethroned commercialism.

Manufacture and fast rail transportation, and not commerce and water transportation, became the mainstay and symbol of progress, and it was then that the Piedmont section of North Carolina became the center of progress and the very waterways which once brought success to the Albemarle section of the State, by separating this section from the changed center of population and industry then became the efficient cause of its restoration.

Times moved on. History repeats itself. A new system of transportation again restores the balance which brings back to the ancient Albemarle and particularly to its colonial Capital, Edenton, the opportunities which were her birthright. For now, thanks to a modern system of highways and vehicular bridges over the obstructing waterways of this section the discrepancy in community opportunity no longer exists, and so again the Piedmont and the Albemarle are

Main Building of Edenton Peanut Company



Edenton Peanut Mill, established in 1909 and through this plant thousands of tons of peanuts pass annually into the markets of the world. The peanut industry of Edenton and Chowan County is one of major importance.

on equal grounds in bidding for industrial expansion and development, only Edenton still has its water transportation, plus dependable railway and highway systems.

The last barrier to Edenton's progress will be removed on the opening of the Albemarle Sound bridge within a few days. Edenton located as it is, on the "Main Street" of the Atlantic seaboard, on the Ocean Highway, and midway between Maine and Florida, on the main line of the Norfolk Southern Railroad which taps the main trunk lines running in all directions as well as the sea, or water transportation terminals at Norfolk and other points, is also fed by a complete system of modern highways connecting it with the heart of America, is now again in a position to cash in on its natural re-

sources and advantages, to resume its rightful place of leadership among the up and coming trade and industrial centers of eastern America.

An equable climate unexcelled, scenic beauty unsurpassed, historic background unrivaled, diversified agriculture, balanced manufacture, virgin forests, fishing, native born home-loving labor in abundance, free from outside or foreign influence, with modern dependable public utility facilities combine to make Edenton the ideal spot in which to live, and a land of great promise and splendid opportunity.

Low Income Families Own 60 Per Cent Cars

Families having incomes of less than \$2,000 a year own 60 percent of

all automobiles and 40 percent of all mechanical refrigerators in use in America, the Department of Commerce reports.

The department's report was made after a detailed study of living standards in American homes. The findings were based on a study of cross-section groups of families in fifty cities throughout the United States.

Modern Conveniences Offered To Residents

(Continued From Page One) to flow into Edenton. In this agricultural section, noted for its rich producing, cattle grazing, hog raising and crop lands, live thousands of people who will find themselves within a few miles distance of this fast

Hints For Homemakers

By Jane Rogers



COOL tones in window shades are the vogue! They're designed to subdue the glare of the sun and keep the rooms livable even on torrid days.

We have discovered there are two such new tints—a green in the springleaf range and a larkspur blue. Both of them soft, muted, and delightfully restful to the eyes.

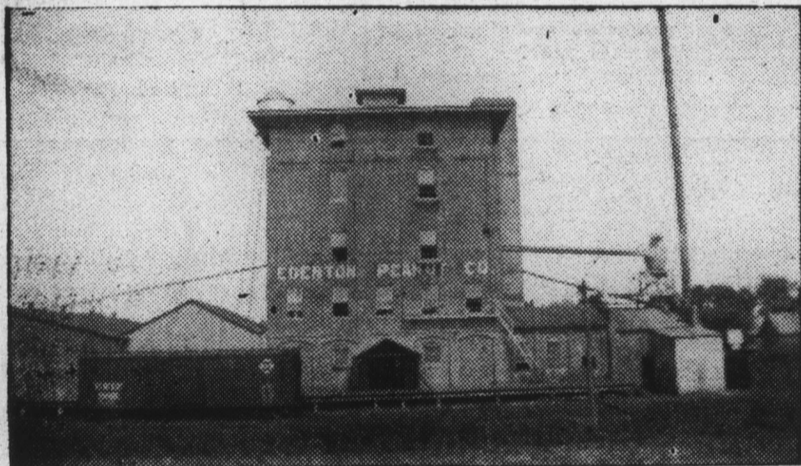
Another household hint for this spring in decoration is that green in its varying tones promises to be particularly important in draperies, slipcovers, cratonnes, chintzes and pottery. And no wonder, for a soft green seems to bring the whole beauty of the countryside indoors!

growing commercial and industrial trade center.

Because of its location at the hub of four directional highways and with adequate rail and water transportation system, serving an immediate area of approximately one hundred and fifty thousand people, Edenton becomes a splendid distributing point. Mill supply houses, farm machinery, wholesale grocers, building supplies, buyers of all agricultural and farm products, and others should by all means consider Edenton as a location.

PARING PANTHER POWER

Pittsburgh, Pa. — University of Pittsburgh lost 17 graders by graduation this past spring, and nine more were declared ineligible because of the new purity regulations.



Main Plant and Building of the Edenton Peanut Company. Established in 1909.

BRING YOUR 1938 CROP OF

PEANUTS

TO OUR PLANT... WE MAINTAIN A

YEAR ROUND MARKET

Welcome . . .

TO OUR GOOD NEIGHBORS AND THE FINE PEOPLE FROM ACROSS THE

ALBEMARLE SOUND

You Are Cordially Invited to Visit and Inspect Our Large and Modern Plant on Your Visit to Edenton During the Celebration and Dedication of the Beautiful Albemarle Sound Bridge

Serving The Peanut Growers For 30 Years

... since this company was organized in 1909 it has left nothing undone to promote the interest and welfare of the peanut growers of this fine section of North Carolina, and today, as we have in the past, we pledge ourselves to aid and contribute every support possible to the further development of the peanut growing industry in Eastern North Carolina.

It is with pleasure that we number the growers by the hundreds whom it has been our pleasure to serve, and with the opening of the Albemarle Sound bridge, thus shortening the distance from your fields to our plant, we invite and solicit your business. Let us serve you as we have hundreds of growers for more than a quarter of a century.

Edenton Peanut Company

"Cleaners and Shellers of Peanuts Since 1909"

Edenton, North Carolina