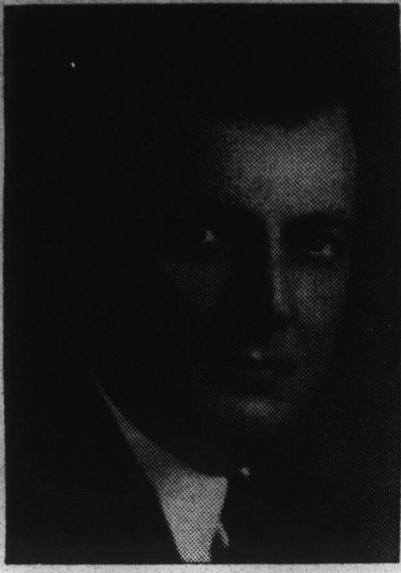


Officials of The Albemarle Peanut Company



WEST W. BYRUM
President



GEDDES B. POTTER
Vice President



MILLARD F. BOND
Secretary-Treasurer

Organizers and builders of the Albemarle Peanut Company. Opened in 1932, the company during its six years of operation has increased the volume of peanuts handled annually to approximately 300,000 bags. This enormous amount of peanuts are shelled and cleaned in this modern plant and shipped to all parts of the nation.

QUINN FURNITURE COMPANY FEATURES NATIONALLY KNOWN BRANDS IN STOCK

One of Largest Organizations In Albemarle; Operate Modern Mortuary Department

The Quinn Furniture has in Edenton one of the most complete stores and mortuary establishments found anywhere in the Albemarle section of the State.

Operated on a quality products basis with a line of nationally advertised merchandise making up its stock, the company has within a few years grown from a small concern into a business of exceptional size and importance to the retail set-up of the city.

It has been the policy of the business since its inception more than 15 years ago to feature only high grade merchandise and sell goods that are branded and advertised, as well as of a quality that will give the buyer service and value for his money.

"We have always given special attention to quality products and parti-

cularly those nationally known and advertised, realizing that no product will stay on the market many years except that it be of a high quality," said W. M. Wilkins, general manager of the store. "As a result, our customers come from all over this section and from several other counties. We felt there was a place in this rich and fast developing section of the Albemarle like we operate and have found it satisfactory to continue with this policy."

The business was started in 1924, organized and operated as a partnership by S. W. Twiford of Elizabeth City, J. H. Wilkins of Elizabeth City and W. M. Wilkins, at which time these men built their own building, which is of modern construction and specially designed for conducting a furniture and mortuary business. From the start the firm has progressed, and each year, with the exception of the critical depression years, has made substantial and healthy gains in its volume of sales.

In 1937 reorganization of the company was made with J. R. By-

rum, T. B. Williford and M. M. Perry being admitted as partners in the business. The entire house consisting of three floors has recently been redecorated and put in first class shape.

Probably no firm in the Albemarle section is better equipped to render a funeral service than is this company, judging from its display and special department which is maintained on the second floor of its spacious quarters. In addition to the display of merchandise, the company maintains and operates two late type modern funeral coaches, and provides all necessary equipment for such occasions with experienced embalmers available at all times, with facilities to handle every detail.

Among the various lines carried by the company of national reputation are such lines as the Carolina made quality furniture of Tomlinsons of High Point, Simmons beauty rest mattress and springs, Philco, RCA and General Electric radio, the Superflex oil burning refrigerators, Dr. Storm line of mattresses and springs, and other important brands of merchandise.

W. M. Wilkins, general manager of the store, is a member of Town Council, a Mason, and is identified with other civic and social organizations of Edenton. He is one of the

Triangle Service Station One Most Modern In Section

Located at Intersection U. S. Highway 17 and State Highway 32; Popular Place

Back in 1923 when highways were being built just a mile from the center of Edenton and where highway State 32 and U. S. 17 branch, L. S. Byrum built a filling station. Later, as travel increased and U. S. No. 17 became a main highway for travel from the north to south he built the present station. That was in 1926.

Gradually adding to the station various modern features and equipment, the station today is practically a one-stop station. The only thing lacking is automobile repairing, or shop work.

Dispensing the famous line of Esso gas and oils, as well as Atlas tires and tubes, one will find a splendid assortment of accessories, clean modernly equipped and daily inspected rest rooms for both ladies and gentlemen, and 24-hour service. In fact, the station has not been closed night or day for more than ten years.

In the station is employed 10 to 12 people whose duties are to see that motorists receive the finest service, as well as quality merchandise. A road service is maintained every hour of the 24 and can be secured by a phone call from any reasonable distance of Edenton.

Equipment throughout the station is modern in every detail. There are six pumps, hydraulic lift grease rack, wash pits with exceptionally large parking spaces on both sides of the station, as well as immediately in front.

Another feature of the station is the soft drink fountain and sandwich service, with cold plate lunches served, specializing particularly in North Carolina country ham sandwiches. Mr. Byrum states, "We take no chances on our quality country hams, active business and commercial leaders of the city and community. Mr. Byrum, who joined the partnership in 1937, is a member of the Masonic order and the Red Men. Mr. Perry is a member of the Red Men and Mr. Williford is a Mason.

for it is our policy to buy and cure our own hams so we will know the flavor and savor are there." The station is rated Grade A cafe by the State Food and Health Department and serves all kinds of sandwiches, cold plates and lunches in addition to maintaining a modern soft drink fountain, as well as beverages of all kinds.

In the station is located its own laundry, also machinery for making the ice cream served, which is made daily from fresh, pure and high quality ingredients.

The personnel is experienced and highly trained in serving the public and the location and business is not only convenient to the traveling public, but is an institution that will reflect credit on the community and favorable comment from the hundreds of people who travel and stop in our city, or at this station.

Mr. Byrum, who heads the organization, is a citizen born and raised in Edenton and is active in the affairs of the community in which he lives. He is also a member of the Lions Club.

Louder, Please

Prof.—Why don't you answer me? Freshman—I did, Professor. I shook my head.

Prof.—But you don't expect me to hear it rattle away up here, do you?

Campen's Modern Jewelry Store



Since 1934 Campen's, Edenton's modern jewelry store, has occupied this attractive up-to-date building located adjacent to the Taylor Theatre.

Hyde County Leader



W. W. WATSON

Mr. Watson was named chairman of Hyde County's advisory committee in connection with the bridge celebration. He is also chairman of the Hyde County Commissioners and can be found in the front ranks in any movement for the welfare of his section.

CADILLAC

LaSALLE

The Coming - - - - - Of A New Day

For all the fine people living on both sides of the Sound in one of the richest and most productive sections of the State of North Carolina a new day has arrived with the opening of the bridge across Albemarle Sound. We are now close neighbors and invite you to come to see us, and let us serve you.

In this establishment you will find a complete, modernly equipped automobile repair department, manned by highly trained mechanics for any make automobile. No matter how small or large the job, it is given prompt and satisfactory attention.

BUICK

OLDSMOBILE

WELCOME TO EDENTON...

Come to See Us
And Let Us Serve You

Chas. H. Jenkins Motor Company

Edenton, North Carolina

PONTIAC

GMC TRUCKS

Welcome To EDENTON

We Are Proud Of Our Splendid Community

Realizing that the people of this section of North Carolina want and appreciate better quality merchandise, style and modern wearing apparel, we have always throughout the years continually added to our stock various lines of merchandise having national reputation for quality, workmanship and style—and today one will find this modern institution displaying on its counters, racks and shelves a stock of as fine merchandise as will be found anywhere in the Albemarle section.

Our Store Is Modern

We have kept abreast of the times by improving our store, expanding, buying large stocks of merchandise, and at all times keeping our prices as low as consistent with good business principles. We invite every man, woman and child in all this section to visit our store. Make this place your shopping headquarters, and to all those people from across the Sound we extend you an invitation to come and see for yourselves the fine values offered for your selection.

Shoes - Hats - Accessories

Ladies', Men's, Boys' Clothing

AT ESTABLISHED LOW PRICES

S. Hobowsky

Edenton

North Carolina