

Result Of Special Election Certified

Commissioners Meet In Special Session Friday Afternoon

Chowan County Commissioners at a special meeting Friday completed another legal phase of the procedure to sell \$400,000 worth of Chowan County bonds for school improvements. The Commissioners were called into special session Friday afternoon by Chairman W. W. Byrum for the purpose of certifying the recent special election authorizing the bond issue.

The official result of the election as found by the Commissioners was that there were 2,908 voters registered and qualified to cast a ballot in the election. Of this number, 526 voted for the bond issue, while 111 votes were cast opposing the said bond issue and the resulting indebtedness.

Certification of the election is one of the many legal steps to be taken before the bonds are offered for sale.

HAVE YOU CONTRIBUTED IN THE MARCH OF DIMES?

Birdseye

FROZEN FOODS
FRUITS - VEGETABLES
POULTRY

Colonial Frozen Food Lockers

TAYLOR THEATRE

EDENTON, N. C.
SHOWS CONTINUOUS EVERY DAY EXCEPT SUNDAY

Today (Thursday) and Friday, February 12-13—

Wild Bill Elliott and John Carroll in "THE FABULOUS TEXAN"

Saturday, February 14—

Roy Rogers and Andy Devine in "ON THE OLD SPANISH TRAIL"

Sunday, February 15—

Double Feature "THE ROOSEVELT STORY" Also "NEATH CANADIAN SKIES"

Monday and Tuesday, February 16-17—

Jeanne Crain and Dan Dailey in "YOU WERE MEANT FOR ME"

Wednesday, February 18—

Double Feature Jean Porter in "TWO BLONDES AND A REDHEAD" Alan Curtis in "PHILO VANCE'S SECRET MISSION"

Coming February 19-20—

"I WALK ALONE"

NOTE: FOR THE BENEFIT OF THOSE WHO MISSED "MOM AND DAD," WE WILL HAVE A RETURN ENGAGEMENT AS SOON AS POSSIBLE.

Third Degree Tonight At Masonic Meeting

Tonight (Thursday) at the meeting of Unanimity Lodge, No. 7, A. F. & A. M., the third degree will be conferred upon a candidate. The Rev. W. C. Francis, master of the lodge, urges all members to be on hand and extends an invitation to visiting Masons to attend.

Chowan Again Digging Out Of 15-Inch Snow

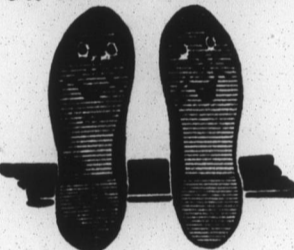
(Continued from Page One)

visitors who, after managing to get this far on their journey, both north and south, decided not to risk negotiating further travel. Hotel Joseph Hewes was filled to capacity and sleeping quarters were at a premium at all tourist homes Tuesday night. Many were taken into private homes for the night. Members of the Police Department, Chamber of Commerce and Cannon Company aided Tuesday night in finding sleeping quarters for many who were stranded. Cars and trucks were parked in the snow about town, and on Wednesday morning a traffic jam developed at Broad and Queen Streets and at Broad and Church. Several Highway Patrolmen were on the job directing traffic which was jammed for a distance of three miles toward Windsor. Many cars were stuck, but were aided by groups pushing and in some instances tractors and jeeps were brought into service.

After noon Tuesday the State Highway forces managed to open up U. S. Route 17, but even then traveling was dangerous, and with the volume of snow on the ground a path only wide enough for travel was cleared.

Lacking snow-removing equipment, the Edenton Street Department faced a serious problem. Three of the trucks were stalled and an effort was made to clear driving space in the business section first. However, the grading machine stalled in the snow, and even when hooked to the town's small tractor no headway could be made. Later a larger tractor was secured from the Byrum Implement & Truck Company, which did manage with great difficulty to clear a driving space on Broad Street, but could not make any headway on any side streets. On Tuesday night Captain William P. Jones of the local Cannon Company of the National Guard offered the services of one of the outfit's Sherman-tanks to pull the town's grader or in any other way to help remove the snow. The matter was brought up at the meeting of Town Council, but the opinion was advanced that the grader might be too light to negotiate the power of the tank and the resistance of the great volume of snow. However, the matter was left with the Street Commissioner, who felt inclined to put the idea into action in an effort to make some head-

HAPPY SHOES



Resoled with "Steerhead" the tanned-for-wear Soleather. Their heels are new and the uppers shining bright. Our complete shoe service adds extra wear to ev'ry pair.

W. M. Rhodes
Shoe Repair Shop
429 South Broad Street
EDENTON, N. C.

way in removing the snow and opening up side streets. Delivery of mail was interrupted Tuesday, with the only incoming mail being by way of Norfolk Southern train late Tuesday afternoon and again Tuesday night. The mail truck from Suffolk and Norfolk was unable to make the trip. L. M. Johnson, driver of the Aulander star route, started to make the trip Wednesday morning, but was able to get only as far as Windsor, and did not make the return trip in the afternoon. Delivery of mail both by carrier in Edenton and rural routes in the county was abandoned Tuesday. It was expected to make a partial delivery in Edenton Wednesday but due to the condition of the county roads, it was doubt-

ful if rural mail will be able to be delivered before Friday. Henry Bunch, substituting for W. Jim Daniels, who is sick, called the post office Wednesday morning that it was absolutely impossible for him to even get out of his yard. Snow on the rural roads is anywhere from 8 to 20 inches deep and in some places drifted to even greater depth. Very few tracks had been made up to Wednesday morning, so that if rural mail is delivered even on Friday, it is expected to be only on the principal roads.

Though the snow caused no little hardships, possibly the most concern developed among members of the local Fire Department, for with traveling so difficult and dangerous it would have been hard to reach the scene of

a fire. As a precautionary measure members of the department volunteered to remain at the fire station at night in order to be on hand if a fire developed. Fortunately, however, no alarm was sent in from Monday until The Herald went to press Wednesday afternoon.

Chowan County schools have suffered a crippling blow as a result of the snow. In Edenton schools were closed Tuesday and Wednesday, with a possibility of remaining closed the remainder of the week. With six white buses and two colored buses using rural roads, it will depend upon when these roads can be used as to when school will be resumed. Superintendent John A. Holmes will depend upon information from Highway patrolmen

as to when the roads are opened. In the county unit schools were also closed Tuesday and according to Superintendent W. J. Taylor, it is uncertain when schools will be reopened. County roads are impassable, so that in this unit also the resumption of classes will depend upon when the highways can be used. Mr. Taylor is hopeful, however, that school can be resumed the first of next week.

BACKACHE

For quick comforting help for Backache, Rheumatic Pains, Getting Up Nights, cloudy urine, irritating passages, Leg Pains, cramps under eyes, and swollen ankles, due to non-organic and non-systemic kidney and bladder troubles, try Cystex. Quick, complete satisfaction or money back guaranteed. Ask your druggist for Cystex today.

MILLION A MONTH

Such Popularity Must Be Deserved!!

Approved and accepted... Each month more than a million homemakers cast their ballots for Our Pride bakery products! Our Pride will get your vote, too, so discover for yourself the Golden baked-in-goodness of really fresh bread. Put Our Pride on your shopping list today.

OUR PRIDE SANDWICH

FRESH-BAKED SLICED THIN FOR BETTER SANDWICHES!

1 1/2-Lb. Loaf **19c**

WHOLE WHEAT CRACKED WHEAT RAININ BREAD RYE BREAD DOLLY MADISON ROLLS

OUR PRIDE BREAD DELICIOUS GOOD WITH CHEESE!

1 1/2-Lb. Loaf **16c**
1-Lb. Loaf **14c**
1-Lb. Loaf **18c**
1-Lb. Loaf **16c**
Doz. Pkg. **15c**

DELICIOUS AND HEALTHFUL—FANCY

CS ORANGE JUICE 46-Oz. Can **19c**

PRESTON'S TENDER GREEN AND WHITE

LIMA BEANS No. 2 Can **25c**

PICK-OF-THE-NEST GRADE "A" LARGE

FRESH EGGS Doz. Ctn. **59c**

PACKED IN OIL—FANCY MAINE

SARDINES 2 No. 2 Cans **25c**

For All Your Baking!

CS FLOUR MILLED FROM SOFT WHEAT! 10-Lbs. Plain **97c**

Factory-Packed

SUGAR 10-Lbs. Paper **89c**

PURE LARD Per lb. **29c**

SOUTHERN GOLD COLORED

MARGARINE Lb. **54c**

RUSTIC FREESTONE PEACHES 2 11-Oz. **23c**

FRANCO-AMERICAN SPAGHETTI Can **15c**

ARMOUR'S STAR

PURE LARD 3-Lbs. **85c**

LARGE FRUNES

SUNSWEEP Lb. Pkg. **20c**

WAXED PAPER

CUT-RITE 125-Ft. **21c**

TRIANGLE CREAMERY

BUTTER Lb. Ctn. **93c**

DUFF'S HOT ROLL MIX Pkg. **25c**

Save With

OUR PRIDE REGULAR LOAF

1-Lb. **13c** 1 1/2-Lbs. **18c**

Grand for Toast! Our Pride

EGG Bread

1-Lb. Loaf **16c**

ARMOUR *White Label* SLICED **BACON** Lb. **59c**

FANCY LEAN CENTER CUT

PORK CHOPS Lb. **63c**

JUICY BONELESS SHOULDER

VEAL ROAST Lb. **69c**

MADE FRESH, SOLD FRESH

GROUND BEEF Lb. **45c**

BARBECUE IT FOR EXTRA GOODNESS.

PORK ROAST Rib or Loin End Lb. **43c**

TENDER DRESSED AND DRAWN

PLUMP FRYERS Lb. **69c**

SIRLOIN, T-BONE OR ROUND

STEAKS Ocean-Fresh SEAFOODS

Medium CROAKERS **25c**

Fresh BUTTERFISH **25c**

Fresh MULLET, lb. **30c**

COLONIAL PRIDE, lb. **79c**

WINNER QUALITY, lb. **77c**

FOR SNACKS AND LUNCHES—NABISCO

Ritz Crackers 1-Lb. Pkg. **31c**

CONDENSED CREAM OF TOMATO

Heinz Soup 3 11-Oz. Cans **35c**

PETS THRIVE ON IT!—DOG FOOD

Strongheart 2 Pkgs. **19c**

SCHOOL DAY BRAND TENDER

Sweet Peas 2 No. 2 Cans **25c**

Mother's Salad **DRESSING** Pint Jar **31c**

Brach's Choc. Covered **CHERRIES** 1-Lb. Pkg. **79c**

POPULAR BRANDS

CIGARETTES Ctn. **\$1.39**

LIBBY'S RED **SALMON** No. 1 Tall **59c**

TOMATO ZEST

CS CATSUP 14-Oz. **21c**

CONDENSED MILK

EAGLE BRAND Can **25c**

10-MULE TEAM

BORAXO 8-Oz. Can **17c**

PURE BORAX

20-MULE TEAM Lb. **17c**

SOAP—2 BATH 35c

Sweetheart 3 Reg. **31c**

Gold Label—1 lb. 45c

COFFEE 2 1-Lb. Bags **89c**

PLAIN FLOUR

TRIANGLE 10 lbs. **85c**

SOAP FLAKES

CHIFFON Lge. Pkg. **38c**

FOR YOUR NYLONS

LUX FLAKES Med. **16c**

BATH SIZE

LUX SOAP 2 Bars **31c**

HEALTH SOAP

LIFEBUOY 2 Bars **21c**

WITH SODIUM

NEW RINSO Med. **16c**

WASHINGTON STATE Winesap

APPLES

- FOR EATING
- FOR COOKING
- FOR SALADS

Stock Up Now!

3 Pounds for **29c**

Values—Vitamins
Down Produce Lane!

FLORIDA TEMPLE

JUICY ORANGES

FROM THE LAND OF SUNSHINE **5 Lbs. 39c**

SELECTED KILN-DRIED

SWEET POTATOES 5 Lbs. **43c**

FANCY RED RIPE SLICING

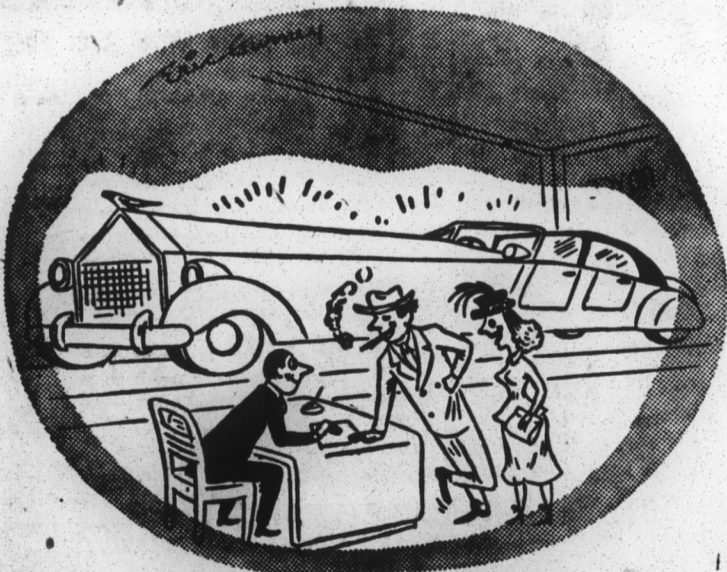
TOMATOES FIRM Ctn. **29c**

CRISP LARGE AND TENDER

CELERY GOLDEN HEART 2 Stalks **21c**

FANCY CALIFORNIA ICEBERG

LETTUCE 2 Med. 15c 2 Lge. **23c**



"Hold it, we'll be back soon... we just entered the great Pepsi-Cola 'Treasure Top' Sweepstakes and Contests!"

- Look for hidden design under the cork in every Pepsi-Cola bottle top.
- Enter Pepsi's great \$203,725 "Treasure Top" Sweepstakes and Contests.
- Every entry gets a Treasure Certificate for the big Family Sweepstakes Prize of \$25,000.00 Cash.
- Collect and swap Pepsi "Treasure Tops"... GET ENTRY BLANKS AT YOUR STORE



Pepsi-Cola Company, Long Island City, N. Y.

PEPSI-COLA COMPANY OF ELIZABETH CITY, N. C.

THESE PRICES EFFECTIVE IN COLONIAL SUPER MARKETS AND SELF-SERVICE STORES

QUALITY FOODS

COLONIAL STORES

GUARANTEED MEATS