

Stephen Leary Dies After Long Illness

Stephen A. Leary, 77, died Saturday night about 10 o'clock at his home in the Brayall section after being in precarious health for about a year. A native of Chowan County, he was a farmer all his life.

Surviving are his wife, Sudie Copeland Leary; a son, Wallace A. Leary of Norfolk; three sisters, Mrs. E. S. Waff of Norfolk, Mrs. H. T. Layton of Edenton and Mrs. Tom Byrum of Tyner, and three brothers, Edward of Portsmouth, J. C. Leary and Lee Leary of Tyner, two grandchildren also survive.

Funeral services were held Monday afternoon at 3 o'clock at the Ziegler Funeral Home, with the Rev. E. L. Wells, officiating. Interment was made in Beaver Hill Cemetery.

Pallbearers were Carroll Privott, Mack Jordan, Louis Goodwin, Frank V. White, Gus Spruill, Louis Leary, Herbert Hollowell, Jr., and John Leary.

CATHOLIC SERVICES

Friday, April 21, the Most Holy Sacrifice of the Mass will be offered in Duke of Windsor Hotel, Windsor, at 7 A. M., including sermon on "The Good Shepherd," Holy Communion, followed by Rosary, religious education, with confessions 6:15 to 6:55 A. M., stated Father Francis J. McCourt, who invites everybody to all services.

Sunday, April 23, Holy Masses in St. Ann's Catholic Church, at 9 and 11 A. M., each including sermon on "The Value of Suffering," Holy Communion, followed by Rosary, Sunday School, with confessions 8:30 to 8:55 and 10:30 to 10:55 A. M. Other week-mornings: Mass, Communion, Rosary in Edenton.

Political Advertisement

DIRTY TACTICS IN THE TAR HEEL STATE

The St. Louis Post-Dispatch.

Senator Graham of North Carolina is up against a dirty fight in his campaign for election to the seat to which he was appointed last year.

Frank Porter Graham is a distinguished American, whose services to his country are well known. As president of the University of North Carolina he was in the vanguard of an advancing South. As public member of the War Labor Board, as representative on the UN mission to Indonesia, as first president of the Oak Ridge Institute of Nuclear Studies and in many other capacities, Mr. Graham has earned the gratitude—certainly, at the very least, the confidence—of his fellow-Americans.

It is incredible that Senator Graham should be having to defend himself from charges of Communism. Tactics of this sort are repellent, but not particularly surprising, when they come from former Senator Robert R. Reynolds, one of his opponents in the current race. However, it is surprising and disquieting to find the same tawdry tactics resorted to by another opponent, a former president of the American Bar Association, Willis Smith, a Raleigh corporation lawyer. It should be possible to expect better than that of Mr. Smith.

Senator Graham represents his State with credit in the national legislature. He is head and shoulders above his opponents, and is no more a Communist than they are fair fighters. Many Americans hope North Carolina will send him back to Washington. In view of that State's prevailing progressiveness we expect it will.

Harrell Gas & Coal Co. Opens New Showroom

The Harrell Gas & Coal Company, with headquarters in Hertford, has opened an office and showroom in the building next to The Chowan Herald office, with Trot Leary as branch manager.

The concern has on display various kinds of attractive cooking, heating and refrigeration appliances, as well as a variety of electrical appliances. The general public is cordially invited to visit the new showroom.

Heart Attack Fatal To Worlew L. Wilson

Worlew L. Wilson, 42, died suddenly as the result of a heart attack about 6:45 o'clock Saturday morning at the home of Thomas Basnight. A native of Chowan County and son of the late Laura Satterfield and T. D. Wilson, deceased had lived at Virginia Beach for the past five years. He died on a visit.

Surviving are a daughter, Miss Beatrice Helen Wilson of Edenton and four sisters, Mrs. Woodrow Brady and Miss Naomi Wilson of Wilson, N. C., Mrs. Lucretia Smithwick of Elizabeth City and Mrs. Rachel Delmonte of Philadelphia.

He was a veteran of World War II and a member of the Edenton Baptist Church.

Funeral services were held at the Williford Funeral Home Monday afternoon at 3 o'clock, with the Rev. R. N. Carroll, pastor of the Edenton Baptist Church, officiating. Interment was made in the family plot at Rocky Hook.

CHRISTIAN CHURCH SERVICES
Services at the First Christian Church are announced as follows by the pastor, the Rev. E. C. Alexander: Bible School, Sunday morning at 10 o'clock; morning service at 11 o'clock; Young People's meeting at 6:30 P. M.; evening service at 7:30 o'clock.

The subject of the evening sermon will be "Sixty Seconds After Death." Wednesday evening Bible Class meets at 7:30 o'clock. Everyone is welcome to all services, for which there will be special music.

Lassiter - Wright Company
Painting
Roofing - Repairing
Radio and Television Servicing
East Church Street Extended
EDENTON, N. C.
PHONES:
Day—636-W
Night—53-W-1 and 614-J



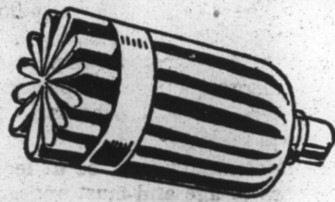
Under the pay-as-you-farm Income Purchase Plan you can own a new Farmall Cub tractor.

This sturdy Farmall Cub does all the work of 2 to 3 horses and mules—better, faster at less cost.

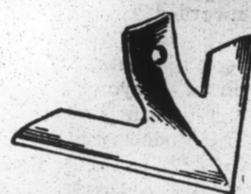
See us today. Ask for a demonstration of the Farmall Cub, painted white with gold stars and red wheels. Start farming the Farmall way tomorrow.

See Us About the INCOME PURCHASE PLAN

IH OIL FILTERS IH CULTIVATOR SWEEPS

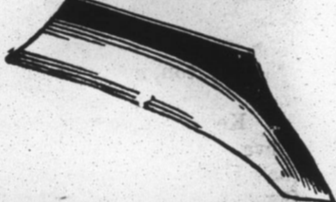


Protect your tractor engine from metal-wearing dust and dirt with quick-absorbing IH oil filter elements. Change them regularly, and be safe.



Popular with users everywhere. See us today for the right type and size to fit your soil and crop conditions.

IH PLOW-SHARES IH DISK BLADES



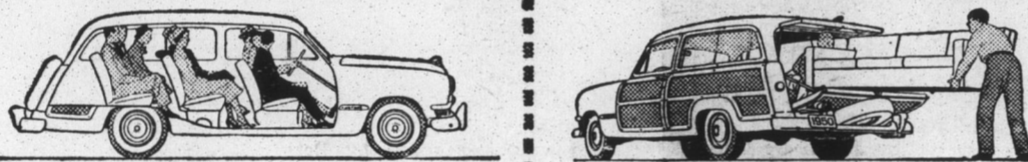
We've got the long-wearing, clean cutting IH plowshare that fits your soil. Get set now for the season ahead.



Hard, knife-sharp IH disk blades last longer—do a better, faster job on the toughest of soils. Get set now for the season ahead.

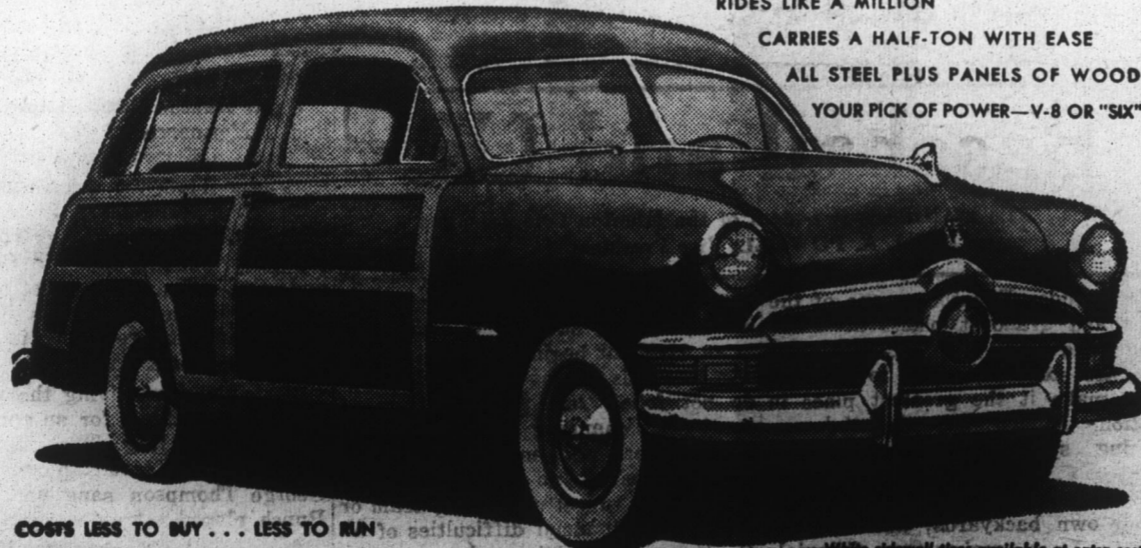
BYRUM IMPLEMENT & TRUCK CO.

EDENTON — ELIZABETH CITY



For Beauty... for Duty
it's the Station Wagon "buy"!

THE ROOMIEST "WAGON" OF ALL
CARRIES 8 PEOPLE COMFORTABLY
NEW AND LOWER PRICES
RIDES LIKE A MILLION
CARRIES A HALF-TON WITH EASE
ALL STEEL PLUS PANELS OF WOOD
YOUR PICK OF POWER—V-8 OR "SIX"



COSTS LESS TO BUY... LESS TO RUN

Ford has built more station wagons than any other manufacturer in the industry. That's one reason why Ford can give you more "wagon" for your money. Whether you have a large family to tote around... whether you just like the looks and convenience of a station wagon... whether you're a butcher or baker or candle-stick maker and use it for utility, you'll find that Ford is today's big station wagon buy.

'50 FORD
"Test Drive" it at your Ford Dealers

Albemarle Motor Company
West Hicks Street Edenton, N. C.

Belk-Tyler EDENTON

New Summer CASUALS

SEE THESE TODAY!

Natural Bridge Shoes



\$7.95



\$7.95

the Smart way to walking comfort



\$7.95

Natural Bridge Shoes are nationally advertised at \$7.95 and \$8.95

Shades of



the SMARTIE and the NEW PRETZEL CASUALS

\$1.98

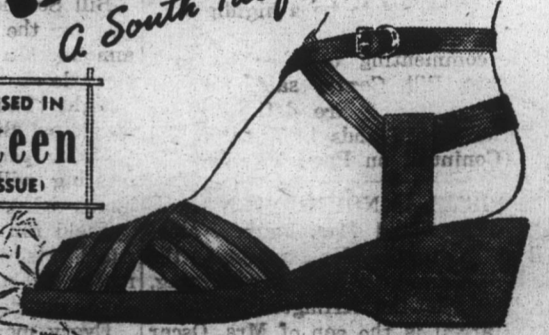
Gorgeous Colors to brighten the hours. Glamorous styling to add charm to any outfit. Light as a feather on your feet. Most of these styles in fabric, some in simulated suede. Also many other attractive styles to choose from. Never before have we seen such outstanding quality at this money-saving price.

MEXICAN MULTI COLORS - PASTEL MULTI COLORS
BLACK - WHITE - RED - GREEN. Allover Pastel
Shades of YELLOW - BLUE - LAVENDER - PINK

All Med. Widths

BALI HA'
A South Pacific Creation

AS ADVERTISED IN SEVENTEEN (MARCH ISSUE)



Glamorous Styling - Excellent Quality
Beautiful new rayon stripping fabric
gorgeous colors to match any Spring outfit
Strap can be worn around the ankle or under arch of foot.

MED. WIDTH ONLY

EXCLUSIVE AT
Belk - Tyler's
Edenton, N. C.

\$2.98

DEFINITELY DOUBLE MEASURE!

DOUBLE COLA

DOUBLE MEASURE
DOUBLE PLEASURE

MORE FOR YOUR MONEY!