

Fannie B. Badham "Woman Of Year"

Teacher In Edenton Colored Schools For 56 Years

The Negro Woman's Club announced at its annual social on Friday night, May 19, that Mrs. Fannie B. Badham had been chosen as the "Woman of the Year". Mrs. T. M. Williams, president of the club, welcomed the guests and presented Mrs. E. L.

Byrd, secretary, who made the announcement and presented Mrs. Badham, veteran teacher.

The public is invited to a program honoring Mrs. Badham on Sunday night, May 28, at 8 o'clock at the Gale Street Baptist Church. Any person is invited to present gifts or cards as a token of love and appreciation for her service and influence during the fifty-six years she has taught in the schools of this community.

State College Alumni Will Meet In Hertford

N. C. State alumni of Chowan and Perquimans counties will hold a joint meeting in Hertford Tuesday night of next week, the meeting scheduled to be held in the Agricultural Building. Roy Clogston, athletic director of State College and All-American Darrell Royal will be special guests.

A feature of the meeting will be movies of a football game during the past season. Robert S. Marsh is secretary of the Chowan Clubs and hopes all State alumni will attend the meeting.

Masonic Lecturer In Edenton This Week

P. C. Stott of Wendell, Masonic lecturer, is in Edenton this week to work with members of Unanimity Lodge, No. 7, A. F. & A. M. Mr. Stott is making his headquarters at Hotel Joseph Hewes and will be glad to work with local Masons at any time if they will contact him.

Take Soil Samples For Fall Pastures

Many farmers will be seeding Laido Clover and grass pastures this fall in connection with the "Green Pastures" campaign for North Carolina. The value of proper liming and fertilization in securing good pasture is being stressed and we want to give the full cooperation of our Soil Testing Laboratory. It is important that you have your soil tested so that you

will know the amount of lime and fertilizer to use at seeding time. These soil samples should be taken within the next few weeks in order that you will have ample time to secure the lime and fertilizer we recommend for your pasture.

The spring rush period in the Soil Testing Laboratory is over and soil samples sent in now will be handled without delay. If you wait to send in your samples until the latter part of July or August, the laboratory may be flooded with samples and there may be a slight delay in getting the recommendations back to you. We expect a very large number of pasture soil samples to be sent in this summer and we strongly urge you to send your samples in soon.

There is no charge to have your soil tested. Containers for your soil

samples and information sheets may be obtained from your county agent, vocational teacher, Soil Conservation Service or local PMA office or by writing directly to the Soil Testing Division, State Department of Agriculture, Raleigh, N. C. If you have been growing pastures on your field for the past several years be sure to state on your information sheet whether you are planning to seed an improved pasture or whether you simply want a recommendation for topdressing the old pasture.

Too Late To Classify

FOR SALE—MIXED GIANT WILT-resistant Aster Plants. 5c per plant. Limited number. Mrs. J. L. Hassell, Route 2, Edenton. May 25 June 1st

HEAR DEMOCRATIC "WARHORSE"
HALLET S. WARD OF WASHINGTON
Speak In Behalf of Senator Graham
Over Radio Station WRCS, at Ahoskie
Thursday, May 25, at 6:45 P. M.

REDUCE without dieting



All you do is eat delicious AYDS (aids) Vitamin and Mineral Candy before meals as directed. Your appetite is curbed; you eat less and lose weight automatically. Yet you eat plenty—never go hungry.

Users report weight losses up to 10 pounds or more with their very first box. You too must lose weight with your first box or money is refunded (\$2.89).

FREE Scientific Weight Chart. Call for yours. Or sent free with mail or phone orders.

AYDS
VITAMIN CANDY REDUCING PLAN
\$2.89
Sold In Edenton By
Mitchener's Pharmacy

Nobody can grow a garden like
Colonial's Produce Lane!

COLONIAL STORES

Without planting a squash, digging a potato or climbing a tree to pluck a banana, you can enjoy the freshest salads, fruit bowls and vegetable plates. Colonial picks the world's finest crops and brings them to you at lower prices. Although you pay less at Colonial, the crops are so fresh and perfect that we offer them with a satisfaction-or-your-money-back guarantee.

LARGE JUICY CALIFORNIA SUNKIST
LEMONS Doz. **39c**
Due to Daily Market Changes Produce Prices Good Thru May 27

ALL SIZES JUICY FLA.
ORANGES 5 Lbs. For **39c**

SELECTED SLICING RED RIFE
TOMATOES Per Carton **21c**

GREEN CALIFORNIA ICEBURG CRISP
LETTUCE 2 Heads For **33c**

YELLOW FLORIDA FANCY
SQUASH 3 Lbs. for **27c**

U. S. NO. 1 NEW WHITE
POTATOES 10 Lbs. for **47c**

FRESH TENDER STRINGLESS GREEN
BEANS 2 Lbs. for **35c**

HOME GROWN LARGE LEAF
SPINACH 3 Lbs. for **23c**

LUSCIOUS WHITE CANDY MARSHMALLOWS
ANGELUS 10-Oz. Pkg. **19c**

BURRY'S DICKENS ASSORTMENT
COOKIES 12-Oz. Pkg. **29c**

FOR LIGHT FLUFFY BISCUITS—TRY
BISQUICK 40-Oz. Pkg. **45c**

STAR-KIST SOLID PACK LIGHT MEAT
TUNA FISH No. 1/2 Can **43c**

FOR FLAKIER CRUSTS USE FLAKO
PIE CRUST 9-Oz. Pkg. **16c**

DELICIOUS LEMON PIE FILLING
MY-T-FINE 3 4-Oz. Pkgs. **23c**

RAINBOW PAPER DINNER
PLATES 2 Pkgs. Of 8 **29c**

ECONOMICAL RAINBOW DINNER
NAPKINS Pkg. **29c**

RAINBOW PLASTIC
FORKS 2 Pkgs. Of 12 **25c**

RAINBOW PLASTIC
SPOONS 2 Pkgs. **25c**

RAINBOW
PARTY PAK 2 5-Pc. Sets **29c**

LILY COLORED COLD
DRINK CUPS Pkg. **10c**

Colonial Guaranteed Meats!

Dressed and Drawn Pan-Ready
FRYERS lb. **49c**

CLOSE TRIMMED WHOLE OR HALF
LEG-O-LAMB lb. **69c**

CLOSE TRIMMED SQUARE-CUT
LAMB SHOULDER lb. **55c**

CLOSE TRIMMED LOIN
LAMB CHOPS lb. **89c**

ARMOUR'S STAR OR SWIFT'S PREMIUM
FRANKFURTERS Lb. Cello **49c**

LUTER'S SHORT SHANK 4-8 LBS. AVG. WT.
SMOKED PICNICS lb. **39c**

SPICED SLICED LUNCH
MEAT 1/2-lb. **29c**

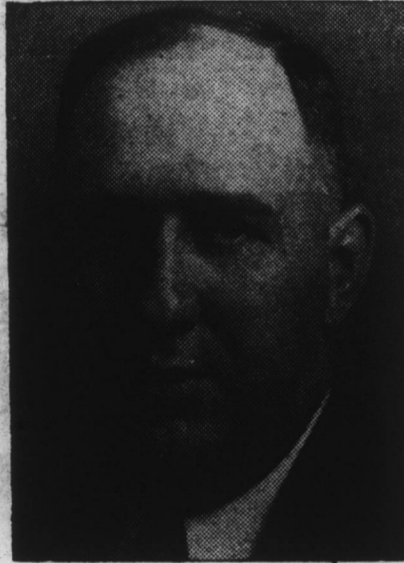
SLICED HAM & CHEESE
LOAF 1/2-lb. **39c**

SLICED BOILED
HAM 1/2-lb. **65c**

SLICED PICKLE & PIMENTO
LOAF 1/2-lb. **27c**

Ocean-Fresh Seafood
Large Fresh N. C. SHRIMP, lb. **79c**
Ocean Pan TROUT, lb. **23c**
Medium PORGIES, lb. **15c**
FRESH CRAB MEAT Regular, lb. **79c**
Claw, lb. **9c**

VOTE FOR
J. A. BUNCH
FOR
SHERIFF
Chowan County



I am a candidate for reelection to the office of Sheriff of Chowan County. It has been impossible for me to personally contact all the voters in the County, so that I am, through this means, soliciting the support of all the voters in the County. I will greatly appreciate any votes and support the voters will favor me with in Saturday's Primary Election.

Cap Brand
CORNER BEEF
12-Oz. Can **39c**

Delicious CS
SHOEPEG CORN
No. 2 Can **17c**

Uncle Ben's
CONVERTED RICE
2 14-Oz. Pkgs. **35c**

SILVER LABEL
TEA
1/2-LB. PKG. **25c** | 1-LB. PKG. **49c**

Luscious CS Fruit
COCKTAIL
No. 1 Can **21c** | No. 2 1/2 Can **35c**

WAXED PAPER
CUT-RITE Roll **23c**

FRENCH'S FLAVORFUL
MUSTARD 9-Oz. Jar **14c**

ST. LOUIS PURE
HONEY 1-lb. Jar **31c**

RED MILL PEANUT
BUTTER 8-Oz. Jar **23c**

SWIFT'S NOURISHING
MEAT FOR BABIES Jar **19c**

CRISP WISE POTATO
CHIPS 5-Oz. Pkg. **25c**

DELICIOUS NIBLET'S
CORN WHOLE KERNEL 2 12-Oz. Cans **31c**

FRESH SUNSHINE KRISPY
CRACKERS 2-lb. Pkg. **49c**

PLANTER'S COCKTAIL
PEANUTS 8-Oz. **35c**

KRAFT KITCHEN-FRESH
MAYONNAISE Jar **42c**

BEECH-NUT
BABY FOOD 3 Jars **29c**

HEINZ RICH RED TOMATO
KETCHUP 14-Oz. **25c**

HEINZ FULL-FLAVORED
VINEGAR 2 Pts. **25c**

SWIFT'S TASTY
PREM 12-Oz. **41c**

GETS THE DIRTY DIRT
LAVA SOAP 2 Bars **18c**

ARMOUR'S DASH BALANCED
DOG FOOD 2 Cans **26c**

SANITARY NAPKINS
MODESS 2 Pkgs. **65c**

STALEY'S LIQUID STARCH
STA-FLO Qt. Bot. **22c**

TOILET SOAP
IVORY 2 Pers. **10c**

LAUNDRY SOAP
P&G SOAP 3 Bars **20c**

HOUSEHOLD CLEANER
SPIC & SPAN 2 Pkgs. **45c**

FOR DISHES
DREFT Lge. Pkg. **26c**

TIDE'S IN-DIRT'S OUT
TIDE Lge. Pkg. **26c**

DOES EVERYTHING
DUZ Lge. Pkg. **26c**

GETS CLOTHES SPARKLING WHITE
OXYDOL Lge. **26c**

CENTURY CLUB
STRAIGHT BOURBON WHISKEY
86 PROOF
\$3.40 4/5 QT. | \$2.10 2 PINT
NATIONAL DISTILLERS PROD. CORP., NEW YORK, N. Y.

LOOK FOR THE GS ROOSTER. MARK OF QUALITY FOODS!