



ALL SET FOR COMMUNIST TANKS—South Korean soldiers have learned the mechanism of antitank mines and here are laying a field to check oncoming Communist armored columns.

Correct Lifting Urged By Local County Agent

"Correct lifting should be practiced until it becomes a habit," commented the local County Agent. Each year thousands are victims of sprains,

hernias and other injuries caused by improper lifting.

According to the records of the National Safety Council the most common causes of lifting are as follows: (1) lifting and lowering with the back muscles instead of leg muscles; (2) insecure grip of footing and unsafe placing of hands or feet; (3) using quick, jerking, twisting or awkward movements of the body; (4) obstructed vision, unstable loads or inadequate control; (5) insufficient help or failure to use mechanical aids.

The body is a mechanical system of levers and hinges, activated by cables just like many machines. Nature intended each bone joint and muscle for a specific purpose. When overloaded or used improperly, injuries are invited. It is a common practice to bend at the waist when reaching down to grasp an object. Lifting in this position places a severe strain on the sensitive back and abdominal muscles.

Always bend your knees and keep back straight when it becomes necessary to lift. Examine farm lifting jobs with a critical eye. Rearrange the work to eliminate or reduce the amount of lifting required. Explore the feasibility of using simple and safe mechanical aids, such as rope hoists, wooden skids, and hand trucks or inexpensive conveyors.

Phosphate With Alfalfa Urged At Planting Time

Annual topdressings will hardly be needed if alfalfa is fertilized with enough phosphorous at planting time, in the opinion of W. W. Woodhouse, Jr., soil scientist with the North Carolina Experiment Station. Phosphorous, potash and nitrogen are the three main elements needed in fertilizing new alfalfa.

The reason phosphate lasts a long time, says Woodhouse, is that it does not leach out of the soil as does potash. Neither do the plants take up more phosphorous than they can use efficiently.

Woodhouse has conducted several tests in which the original application of phosphorous was still boosting alfalfa yields three to five years later. In one such test, three different plots were treated in 1943 with "no phos-

phorous", "40 pounds of phosphorous," and "160 pounds of phosphorous" per acre. Five years later, in 1948, the yield of hay from these plots were 5,863, 6,283, and 7,009 pounds per acre, respectively.

These results, says Woodhouse, suggest the practice of applying a high rate of phosphorous at seeding and then maintaining this with occasional light top dressings.

As with many of other plants, alfalfa is very sensitive to the phosphorous level during the time it is becoming established. The young seedlings seem to get a big boost from this material.

Woodhouse recommends using from 700 to 1,000 pounds of 2-12-12 fertilizer per acre in starting alfalfa. Between 25 and 35 pounds of agricultural borax should be added to this, since alfalfa responds to small amounts of borax.

EPISCOPAL CHURCH SERVICES

Services at St. Paul's Episcopal Church are announced as follows by the rector, the Rev. Harold W. Gilmer: Sunday, September 10, fourteenth Sunday after Trinity—8 A. M., the Holy Communion, plain celebration; 11 A. M., the Holy Communion, choral eucharist; 8 P. M., September meeting of the Vestry.

When somebody proposes a conference he means that he thinks he has enough arguments to win you to his opinion.

Director Of Band Speaker At Rotary

Ernest Gentile Senses Need For Wholesome Entertainment

Ernest Gentile, director of the Edenton High School Band, was the principal speaker at the Rotary meeting Thursday of last week. Mr. Gentile, a newcomer to Edenton, said he had a number of offers to direct bands, but that he and his wife were so favorably impressed with Edenton that he decided to accept the Edenton offer.

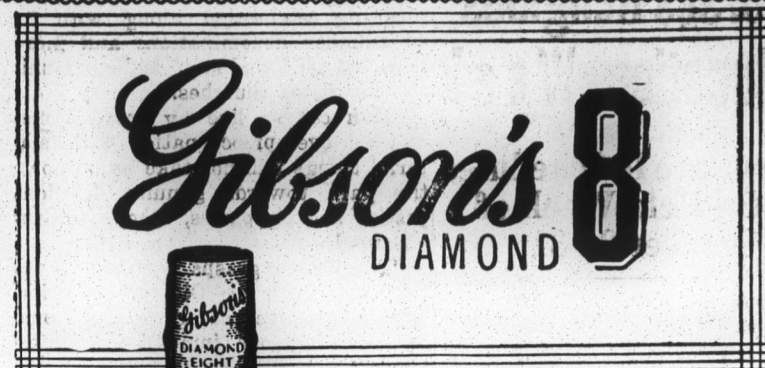
"This is a very beautiful and quiet town," he said, "in fact too quiet."

Referring to the latter statement, Mr. Gentile said the young people of Edenton are entitled to have some form of wholesome entertainment at night. He mentioned a community center where dances and other forms of entertainment could be held, as well as a park where band concerts could be held for the entertainment of both young and old.

The band director said he was interested in music ever since he was six years old and told the Rotarians he has played all kinds of music and named the various organizations with which he has been associated over a long period of years and extensive travel. He appeared well pleased with the interest and talent he found in Edenton and expressed the hope that he will be able to develop a band of which the community may well be pleased.

Mr. Gentile stated that a number of adults who can play musical instruments have approached him relative to organizing an orchestra. This

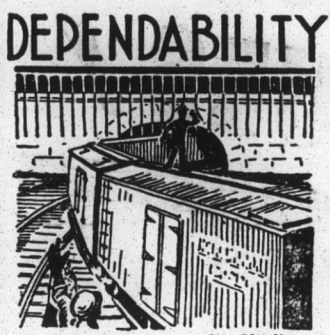
Bankers and industrialists continue to worry about the possibility that price supports may destroy the fibre of the American farmer. This is the month of the meteors but, so far, we have had little luck in seeing them as they pass through the skies.



Gibson's 8 DIAMOND

\$2.10 PINT
\$3.45 4/5 Quart

GIBSON'S DIAMOND 8 BLENDED WHISKEY • 86 PROOF • 65% GRAIN NEUTRAL SPIRITS • GIBSON DISTILLERS, INC., NEW YORK, N. Y.



DEPENDABILITY

THRU the darkest night or heaviest fog the "tall tale" can be depended on to warn the brakeman of a tunnel ahead. His mind is at rest... knowing he is protected from unpleasant surprises.

Knowing that you can depend upon this organization to completely relieve you of tedious detail, your mind will be at rest. Your choice of appointments determines the cost.

WILLIFORD Funeral Home
PHONE 231 • EDENTON N.C.
THE HOME OF THE ALBEMARLE MUTUAL BURIAL ASSOCIATION

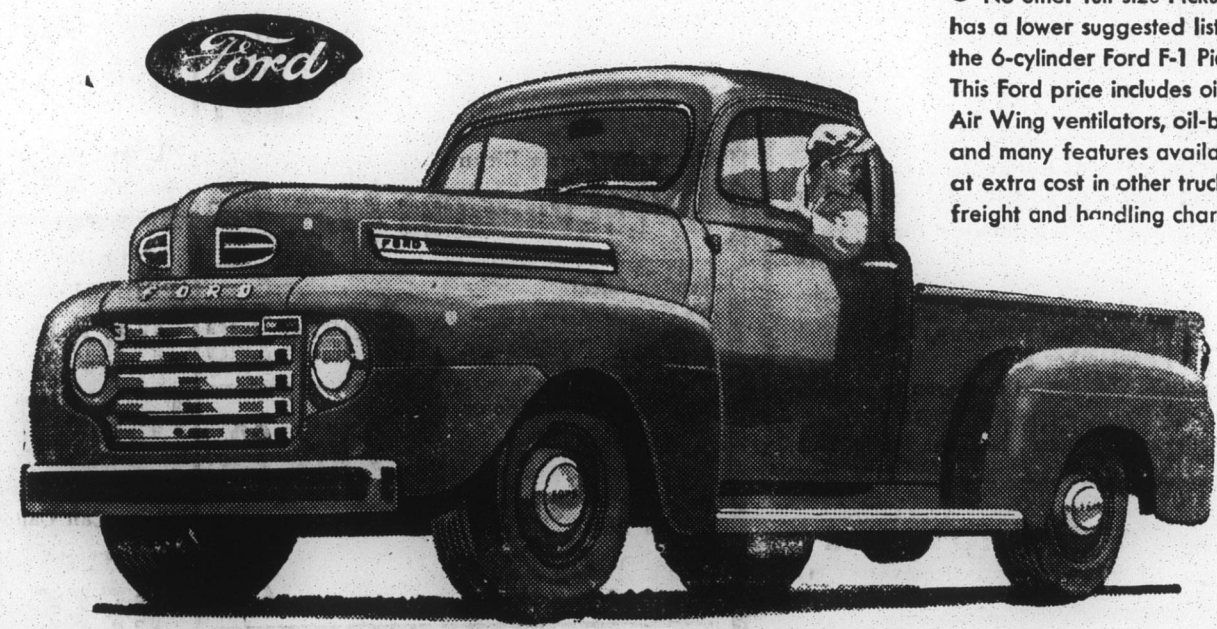


WANTED!
Pine and Cypress Logs
\$50.00 Per 1,000 and up
Horner's Mill
Southern Avenue Extended
ELIZABETH CITY, N. C.
Phones 1664 or 1441-J

"SPEEDY" by ALBEMARLE Motor Co.

ALBEMARLE MOTOR CO.
WEST HICKS ST. Sales Ford Service PHONE 289

LOWEST-PRICED FULL-SIZE PICKUP WITH OIL FILTER, OIL-BATH AIR CLEANER



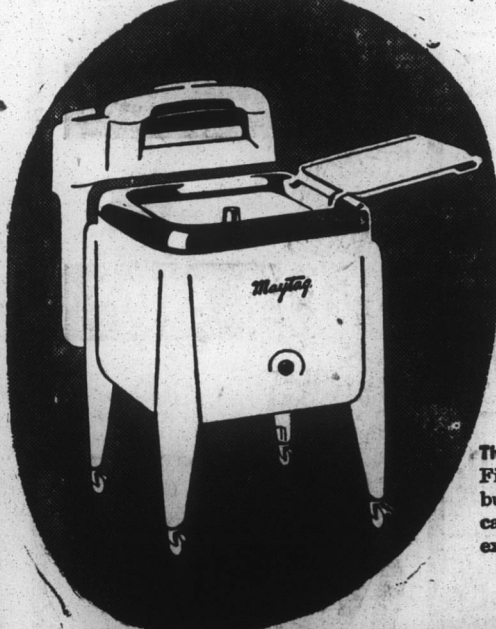
● No other full-size Pickup truck in America has a lower suggested list price than the 6-cylinder Ford F-1 Pickup shown here. This Ford price includes oil filter, Air Wing ventilators, oil-bath air cleaner and many features available only at extra cost in other trucks. Local taxes, freight and handling charges extra.

A DOZEN REASONS WHY AMERICA'S NO. 1 TRUCK VALUE WILL DO MORE PER DOLLAR!

- THRIFTY 95-H.P. SIX-CYLINDER ENGINE for all-around performance in the 4,700 lb. G.V.W. class. 100-h.p. V-8 available at slight extra cost.
- LOADOMATIC IGNITION saves gas by providing spark advance for changes in engine load and speed.
- FLIGHTLIGHT PISTONS save oil: Cam-ground aluminum alloy for true fit and better oil control.
- ALL-STEEL BODY with spacious 45 cu. ft. of loadspace.
- HYDRAULIC BRAKES with true and easy stopping action.
- DEMOUNTABLE BRAKE DRUMS simplify maintenance. Drum can be bought separately for replacement.
- SHOCK ABSORBERS, airplane-type, standard front and rear.

- MILLION DOLLAR CAB with door-glass Air Wing ventilators and Level Action suspension.
- SYNCHRO-SILENT TRANSMISSION for easy, quick and quiet shifting.
- GYRO-GRIP CLUTCH for better clamping action.
- HYPOID REAR AXLE with integral type housing. Shafts removable from wheel end.
- ROLL ACTION STEERING with needle bearings for easier control.

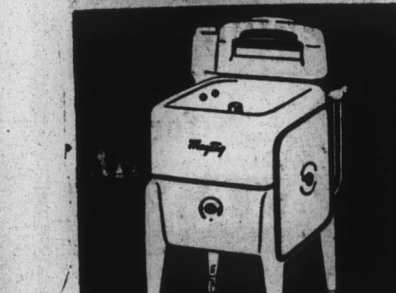
Maytag THE FINEST YOU CAN BUY!



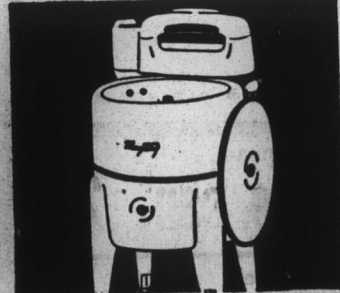
Everything gets clean in a Maytag. Famous Gyrafoam washing action gets out all the dirt... yet is gentle with the daintiest fabrics.

Liberal trade-in. Low monthly payments. Come in today for a demonstration.

The Maytag Master—Finest Maytag ever built. Large, square, cast aluminum tub has extra capacity. \$179.95



The Maytag Commander—Big, square porcelain tub. Gyrafoam action washes extra-fast, extra-clean. \$144.95



The Maytag Chieftain—A genuine Maytag, yet priced within a few dollars of the lowest-cost washers on the market. \$124.95

RALPH E. PARRISH
"Your Frigidaire Dealer"
S. BROAD ST. EDENTON PHONE 178

Ford Trucking Costs Less because— FORD TRUCKS LAST LONGER

(Using latest registration data on 6,592,000 trucks, life insurance experts prove Ford Trucks last longer!)