

Mrs. Dixon Delights BPW Club Members

(Continued from Page One)
ment policy making? Edenton's Tea Party women measured up to their responsibilities, can we not do as much today? We hope through lectures, study and fellowship, to take our rightful places in the world."

A moment of silence was observed in honor of Dr. W. A. Leggett, who died Wednesday night at his home on Granville Street. Mrs. Wesley Cheson, Sr., in behalf of Chowan County Home Demonstration Clubs, presented the club with a United Nations Flag, representing 60 nations after which minutes and report of treasurer were approved.

Announcement was made that the mid-year council meeting will be held at Southern Pines on November 4-5. Those planning to attend are requested to make their own hotel reservations. The following new members were accepted into the club: Miss Helen Evans, Mrs. Anita Tarkington, Mrs. Kate Wozelka, Mrs. "Tressie Bunch and Mrs. Carolyn Thomas.

The evening speaker was then introduced by Miss Lena Jones, program chairman. Mrs. Dixon, who spoke on "The Activities and Freedom of German Women Compared to American Women," told those attending that women in Germany worked so hard, that their days made ours seem days of leisure. She said they pulled carts, while the men either walked behind or rode in wagons.

"When we first arrived in Germany, we would see Germans going through the woodlands carrying bags. We had no idea what they were gathering," Mrs. Dixon declared. "The women wore skirts above their knees and used no make-up. From lack of calories, some form of breaking out occurred as all foods were given to the children," she said.

One of the customs of the German people, the speaker revealed, was that of women sitting on one side of the church while the men occupied the other side. "The German girls wanted to talk to we American women and some of them could speak English," she said. "They displayed ignorance concerning the happenings of other countries and being raised during the Hitler Regime, they just couldn't understand why we Americans were

taught so many more things than they. They asked lots of questions and were particularly interested in our school system.

Mrs. Dixon crest a laugh and a hearty agreement of disapproval when she told about the little say so the German women have, stating it is definitely a man's world. "I didn't like that a bit, do you?" she asked.

"Before coming back to the states," the speaker said, we American women decided we had better change our clothes back to longer skirts. We found a very good dressmaker and had the changes made." She stated that even the wealthiest German families were forced to sell their most valuable belongings and some of their articles were the "most beautiful I have ever seen," she declared. "Peddling became a nuisance and we hated to see Saturday mornings come as somebody was knocking all day long to either peddle or beg. We were allowed to buy only \$100 worth of food at the commissary, to have fed all that asked for food would have been out of the question."

In conclusion, Mrs. Dixon stated that she gave the picture of Germany only as she saw it during her stay there, but that she had heard from friends who said that conditions there had improved considerably. She remarked that she would like to return to Germany again under better circumstances.

The Edenton High School Glee Club delighted those present with several beautiful numbers, with Miss Marjorie Thigpen at the piano. The selections were announced by Miss Joan Cobb.

Winter Scours Cut Production Of Milk

Milk production in many herds is going to be cut sharply during the coming months by "winter scours", the American Foundation for Animal Health warns herd owners.

"When a cow suddenly refuses feed, appears dull, secretes less milk and scours badly, the owner may suspect that the animal has eaten spoiled or frozen feed," a Foundation bulletin said.

"But if other cows in the herd rapidly develop the same symptoms, the trouble may be winter scours, a quick-spreading infectious disease.

"Veterinarians have isolated the germ which causes the malady; it is

a 'vibrio' organism, related to a germ which sometimes causes abortion in cattle."

Few cows die outright from the disease. But it causes heavy setbacks in milk production, the Foundation said. Affected animals usually require a long time to return to full production. Most cases occur during the fall, winter and spring.

"Control of the disease is very diffi-

cult, even in the best managed herds. However, if action is taken soon enough, segregation of the first cows to become infected may stop its spread.

"Also highly important is to obtain an early diagnosis of the condition, because winter scours may be confused with coccidiosis, or with several other intestinal diseases.

"Once diagnosed, several treat-

ments are effective in holding down the harmful effects."

PTA Of White Oak Elects New Officers

The initial meeting of the White Oak unit of the North Carolina Teachers Association was held, October 17, at the White Oak School.

New officers for the 1950-51 term

are as follows:
President, Thomas Jernigan; vice-president, Mrs. Jane Gilliam; secretary-treasurer, Mrs. Naomi Hicks; program committee, the Rev. E. S. Parker and Thomas Jernigan; news reporter, Miss L. M. Nixon.
Meetings will be held every six weeks at the White Oak School Building.

NOT A GHOST OF A CHANCE TO BEAT THESE PRICES



Luter's Smoked—4-6-lb. Average

PICNICS lb. 43c

Free Delivery Every Friday Phone 511

Sunshine Krispy Crackers, 1/2 lb. 15c

Paramount Vienna Sausage, can. . 18c

Libby's Tall Corned Beef Hash, can 39c

Flag Dog Food 3 cans 25c

POPULAR CIGARETTES CARTON \$1.50 Plus 5c Tax

Choice MEATS

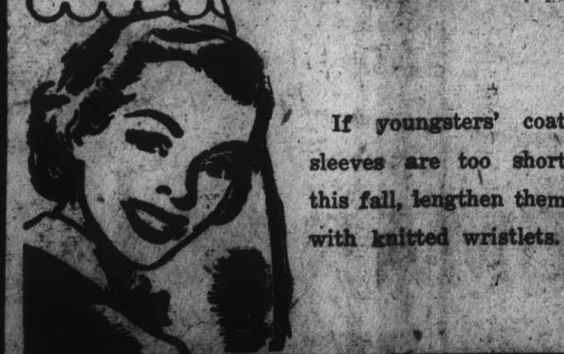
"AA" Western Sirloin Steak, lb. 95c

8-10 Lb. Half or Whole Fresh Hams, lb 55c

Swift's Premium—1-lb. Cello Franks, lb. 55c

Luter's "A" Grade Sliced Bacon, lb. 59c

P & Q Food Center's **HANDY HINTS** By Mary Lee Taylor



If youngsters' coat sleeves are too short this fall, lengthen them with knitted wristlets.

REAL PEACH FLAVOR

Mary Lee Taylor's Ask Us for Recipe

THRIFTY PEACH BAVARIAN YOU WILL NEED

California Cling Peaches can 32c
Lemon Gelatin 3 for 25
Lemons, doz. 33c
Pet Milk 4 cans 51c

ASK FOR RECIPE

No. 2 1/2 Renown Peaches, can 28c

No 2 1/2 Cans Blue Bunny Peaches, can 31c

Assorted Jello 3 pkgs. 25c

LOOK! LOOK!

Fresh Crabmeat Claw, lb. 69c
Regular lb 79c

Fresh Frozen Soft Shell Crabs 6 for 95c

Jumbo Cuban Lobster Tails, lb. . . 89c

Armour Star Eviscerated Ducks, lb. 69c

18-20 Average Turkey, Dressed-Drawn Toms, lb. 59c

Hen 8-10 lb. Dressed and Drawn Turkeys, lb. 69c

Popular Chewing Gum 3 pkgs. 10c

Phone 511

P & Q FOOD CENTER

Borden's Eagle Brand Milk, can 29c

Flat Maine Sardines . 20c

Eatwell Tall Mackerel 37c

303 Rose Farm Shoe Peg Corn 2 cans 29

Kellogg's Rice 2 Box Krispies . . 29c

Campbell's Vegetable Soup 2 cans 25

Super Store Coffee, lb. 79c

1-lb. Cello Rice, lb. . . 15c

No. 2 Red Glo Tomatoes 4 Cans 49c

No. 2 Red Glo TOMATOES 4 No. 2 Cans 49c

No. 303 Pitch Inn JUNE PEAS 4 cans 49c

Fresh VEGETABLES

Yellow Texas Onions 6 lbs. 25c

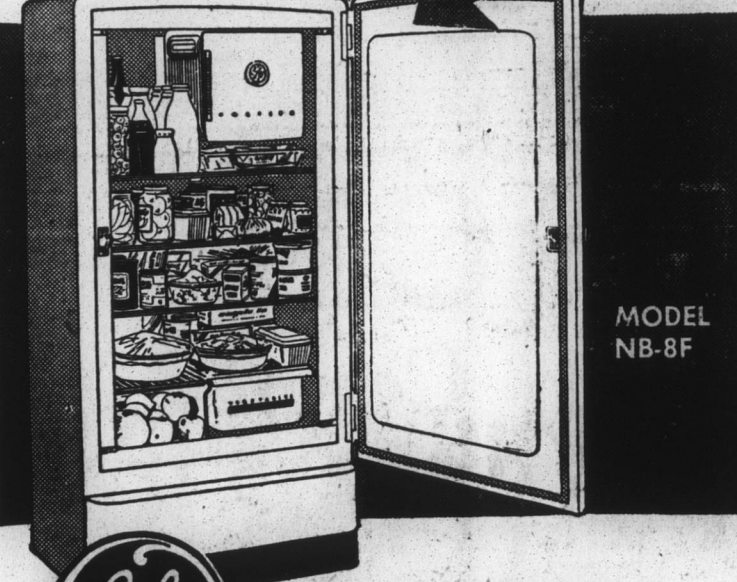
Fancy Bleached Celery 2 stalks 23c

Green Top Radishes 2 bchs. 15c

Fancy Iceberg Lettuce 2 heads 21c

U. S. No. 1 Graded White Potatoes . . 10 lbs. bulk 25c

MORE THAN AN "8" FOR THE PRICE OF A "7"



Space Maker REFRIGERATOR

- ★ MORE than 8 cu ft of refrigerated food-storage space.
- ★ MORE than 14 sq ft of shelf area.
- ★ MORE food-storage space in less floor space.
- ★ YES this big 8-cu-ft G-E sells for less than many 7-cu-ft models! Why pay more for less?

CONVENIENT TERMS

SEE IT TODAY—

QUINN FURNITURE COMPANY

EDENTON, N. C.

Authorized Dealer

GENERAL ELECTRIC REFRIGERATORS