

Appeal Is Made For Epidemic Aid Fund To Help Polio Cases

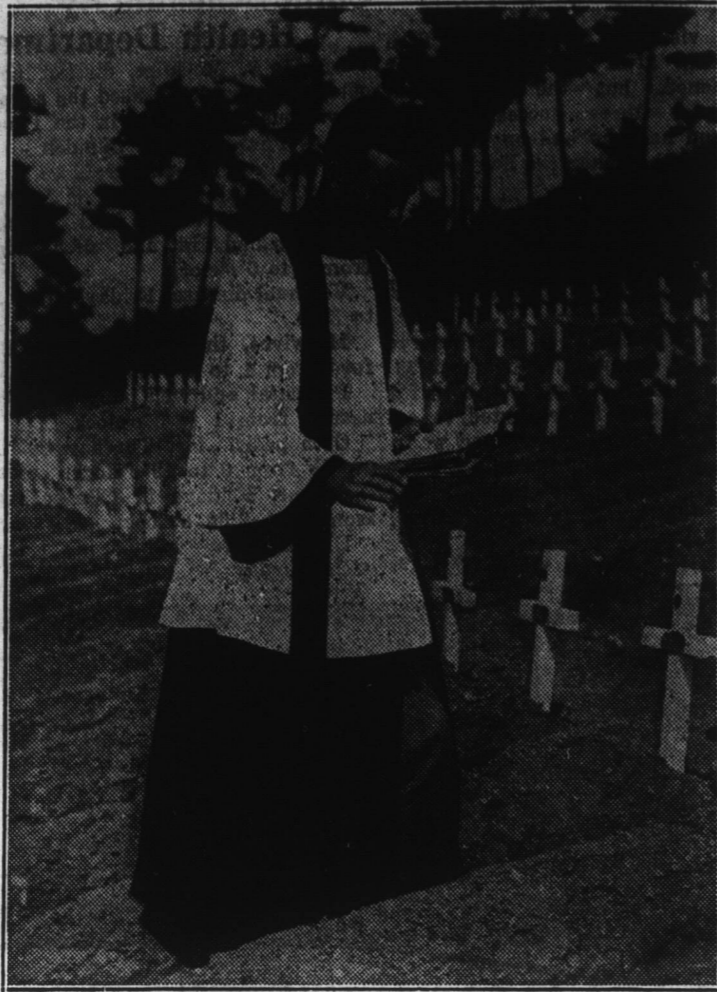
Chowan Chapter Will Contribute Most Of Funds On Hand

J. Edwin Bufflap, Chairman of the Chowan County Chapter of the National Foundation For Infantile Paralysis, has been informed by Jack E. McGee, Eastern State Representative, that the epidemic aid fund at national headquarters will be completely exhausted by the first of November. Due to this condition, contributions are being requested from chapters with uncommitted funds to enable all the members of the National Foundational family to fulfill their pledge to the American people to give financial assistance where needed to all polio patients.

The epidemic aid fund is issued to make advances to those chapters whose treasuries have been drained by the heavy case loads they are carrying out. At the beginning of September, 759 of the Foundation's 2,800 chapters were depending upon this fund to continue financial assistance to those afflicted with infantile paralysis. Polio incidence has been more widely spread than in previous years. The neighboring states of South Carolina and Virginia are undergoing the same kind of polio year which North Carolina experienced in 1948. In addition, Texas and California are having their perennial epidemics.

Polio incidence in North Carolina was 552 cases on October 2, 1950. In spite of this relatively light incidence, it has been necessary for National Headquarters to advance \$161,352.52 from the epidemic aid fund this year

U. S. MILITARY CEMETERY, MASAN, KOREA



The muffled drum's sad roll has beat
The soldier's last tattoo;
No more on Life's parade shall meet
That brave and fallen foe.
On Fame's eternal camping-ground
Their silent tents are spread,
While Glory guards, with solemn round,
The bivouac of the dead.

to 28 North Carolina chapters.

Six nurses and one physical therapist were sent into North Carolina by the National Foundation For Infantile Paralysis during one week recent-

ly to help care for polio patients, it is reported by the State Office of the Foundation.

This brings the 1950 total of recruited personnel assistance to 57

nurses, six resident physicians, and three physical therapists. These urgently needed professional workers are paid by the National Foundation and recruited by the American Red Cross in the care of nurses and American Physical Therapy Association in the case of physical therapists. National Foundation Headquarters in New York City reported that \$233,350 was sent out to chapters in all parts of the country the last week in September, raising the total of advances for the year to \$6,450,345.18. Emergency equipment shipped into the state during the week included one respirator and one hot-pack machine. Since January, 17 respirators and eight hot-pack machines, as well as twelve cribs, have been supplied by the National Foundation in North Carolina.

Chowan County has been fortunate this year with only one case of poliomyelitis reported, so that the local chapter will answer the appeal for funds.

9.38-Mile Piece Of Road Finished In Washington

The State Highway Commission has just finished a 9.38-mile stretch of secondary road in Washington County under the accelerated road construction program.

The project runs from Plymouth via Mackeys to Pleasant Grove Church.

Six Bales Of Cotton Grown On 3.7 Acres

Six bales of cotton grown on 3.7 acres in spite of heavy rainfall and severe boll weevil infestation prove the value of cotton dusting and following approved practices. That is the yield one Bertie County Negro farmer, Charlie Hardy of Roxobel, received from his cotton acreage this year.

M. W. Coleman, Negro county agent for the State College Extension Service, says Hardy is being called the

"most successful" cotton grower of April 25. He used 600 pounds of the year in Bertie County. The total 5-10-5 fertilizer at planting time and yield was 2,958 pounds of lint. Hardy later side-dressed with 110 pounds per acre of nitrate of soda.

The cotton was ginned at Rich Square and Hardy has sales slips showing that the six bales weighed 508, 506, 502, 500, 480 and 463 pounds. The acreage figure for the land is the official PMA measurement.

Hardy used the Coker 100 variety and planted it between April 18 and

The cotton was dusted seven times, the first application having been made around June 15. For each application he used between 15 and 20 pounds of dust per acre and did his dusting with a six-row tractor-drawn dusting machine. Although the dusting material cost him \$120, Hardy says he wishes he had dusted the crop at least once more.

Use half as much!



YES MA'AM THAT'S RIGHT

USE HALF AS MUCH

It's NEW ORLEANS' Famous FRENCH MARKET COFFEE



All the "roaster-fresh" goodness, strength and flavor sealed in metal vacuum cans.

TRY THIS—A treat you'll want to enjoy every day. Real New Orleans style coffee.



Pour milk or one half milk and one half cream into sauce pan.



Heat milk almost to boiling point. Do this while you are making coffee.



Fill cup to about one fourth full with hot milk.



Pour hot FRENCH MARKET coffee into hot milk in cup until you get the color desired.

MILD or STRONG—you can make French Market coffee to please your particular taste. So for a perfect cup of coffee—an economical cup—ask for FRENCH MARKET. Famous since 1890!

Your Grocer Has It!

Bird in hand that's a Beauty



and a Buy!

Now it can be told. This clean-lined, smart-stepping 1950 version is the most popular Buick ever built.

Ever since early in the present year, a value-wise public has been taking them away from us as fast as—or faster than—the great Buick factories could roll them out. Within recent weeks, production and sales have set an all-time record.

Count off the distinguished and time-tried features of this winner and you'll know why.

It has a Very Exclusive Motor—Buick's own high-compression Fireball—which gets its driving power from a combustion chamber found in no other car in the world.

It has the bump-smothering softness of coil springs on all four wheels and a torque-tube drive—a comfort combination that no other car provides.

It has Dynaflo Drive*—which ushered in a whole new concept of effortless travel.

It has a brilliant styling which sets it apart from every other car on the road.

And it has prices which say "buy me" to any motorist who's looking for maximum money's worth.

Isn't it sensible, while these great cars are still coming off the line, to check with your Buick dealer about getting one to call your own?

*Standard on ROADMASTER, optional at extra cost on SUPER and SPECIAL models.

WHEN BETTER AUTOMOBILES ARE BUILT BUICK WILL BUILD THEM

WHATEVER YOUR PRICE RANGE
"Better Buy Buick"

Only Buick has Dynaflo—and with it goes!

HIGHER-COMPRESSION Fireball valve-in-head power in three engines. (New F-263 engine in SUPER models.) • NEW-PATTERN STYLING, with MULTI-GUARD forefront, taper-through fenders, "double bubble" tail-lights • WIDE-ANGLE VISIBILITY, close-up road view both forward and back • HANDY SIZE, less over-all length for easier parking and garaging, short turning radius • EXTRA-WIDE SEATS cradled between the axles • SOFT BUICK RIDE, from all-coil springing, Safety-Ride rims, low-pressure tires, ride-steadying torque-tube • WIDE ARRAY OF MODELS with Body by Fisher.

Tune in HENRY J. TAYLOR, ABC Network, every Monday evening.

YOUR KEY TO GREATER VALUE

Chas. H. Jenkins Motor Company, Inc.

105-106 EAST QUEEN STREET

PHONE 147

EDENTON, NORTH CAROLINA

WHEN BETTER AUTOMOBILES ARE BUILT BUICK WILL BUILD THEM