

Home Demonstration Clubs Of County Hold Interesting Program

Miss Pauline Gordon, Extension Specialist, Speaker

The Spring Federation Meeting of Home Demonstration Clubs was held in the Edenton Court House last week in celebration of the Sixth National Home Demonstration Week, with the theme "Today's Home Builds Tomorrow's World."

Mrs. W. H. Saunders presided over the meeting and extended the group a very warm welcome. Mrs. R. E. Gordon, of the Rocky Mount Club, conducted the devotional service, emphasizing the spiritual side of the home and the fact that the home is the foundation of America.

George Alma Byrum, Chairman of Chowan County Blood Program, explained the value of the blood program and urged the women to continue their cooperation by donating blood. The next visit of the bloodmobile will be Thursday, May 17, at the Edenton armory and the quota again is 175 pints.

Miss Carolyn Swindell delighted those attending with a solo, "My Wild Irish Rose."

The principal speaker was Miss Pauline Gordon, extension home furnishings specialist of Raleigh, who was introduced by Miss Martha Barnette, Assistant Home Agent. Miss Gordon's address and demonstration were most interesting and informative. She discussed the physical side of the home and stated, that upon entering a room it should immediately strike the eye to give a good impression. There are five factors in making the home beautiful, she said, "attractive color scheme, furniture, cleanliness, comfort, and convenience."

The specialist listed the following suggestions in making the home beautiful:

1. Don't buy furnishings too hurriedly give a lot of thought and time before purchasing.
2. Buy furnishings that provide comfort and easy to keep clean.
3. In planning a room, figures and plain designs are both good if carefully selected attractive and harmonizing colors are used.

Following the meeting at the Court House, the group went to the Quinn Furniture Store where Miss Gordon gave an excellent demonstration on purchasing furniture, illustrating the points to be considered in selection. She emphasized, "Know what you want in furniture before buying. Buy the best you can afford, so that it will last through the years."

SPORTS AFIELD

By Ted Keating

Sometimes even the most experienced sportsmen run out of supplies before getting back to their base. So Paul Johnson has planned an emergency kit that weighs only 1 1/2 pounds and can be carried in your hunting coat pocket. This will supply sufficient nourishment and shelter for a three-day trip.

First, get a tin with a good lid that measures 5 x 3 1/2 x 2 1/2 inches. This is a standard size tin and is easy to find. Then get the following: three packets of dehydrated soup, three plain, sweet chocolate bars, nine bouillon cubes, one-half pound of rice, a short length of fishline, three or four hooks, water-proofed matches or matches in a waterproof box, a four-inch piece of candle and 40 feet of 90-pound test cod line.

To pack these, first place the candle upright in one corner of the tin, then pack the nine bouillon cubes on the bottom after removing any bulky wrappings. Next, place the three packages of dehydrated soup on the side of the can opposite the candle. Now pack the three chocolate bars upright in the can and pour in some of the rice to fill any spaces.

Place the hooks in a small envelope on top of the rice, put the lid on the can and seal it with one-inch wide adhesive tape. Then wrap your fishline lengthwise around the can and wrap the cod line neatly around the side of it.

You should use the supplies in this manner: For breakfast each day

have one of the packages of soup, strengthened with one bouillon cube. For lunch, eat one chocolate bar, and for supper boil up one third of the rice with two bouillon cubes. You do all your cooking in the tin container, after carefully unpacking it.

The candle is very useful for lighting a quick fire. The cod line is used for lashing poles when making a lean-to shelter; and the fishline and hooks are used, if necessary, to augment your diet.

This kit is so light and handy that, even if you are going into the woods for only a few hours, it is well to take it along. When properly packed, it will remain in good condition for many months.

MAY QUEEN ATTENDANT

Miss Betsy Wood was an attendant to the queen at the annual May Day exercises of Randolph-Macon Woman's College on Saturday, May 5. Miss Wood is the daughter of Mrs. Fred P. Wood of Edenton.

DEPENDABILITY



ALTHOUGH her vast audience is unseen, the singer knows that thousands are listening to her every note. The proven dependability of the modern radio is the greatest wonder of this wonderful age!

Listening to those whom we have served will prove the dependability of our organization. Our service is one of quiet dignity, or respectful observance, and of careful attention to detail.



WILLIFORD
Funeral Home
PHONE 231-EDENTON N.C.
THE HOME OF THE ALBEMARLE MUTUAL BURIAL ASSOCIATION

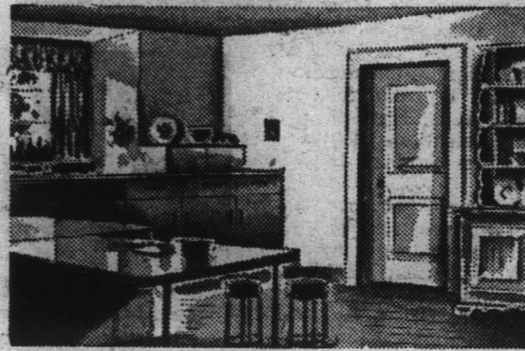
No Use Despairing
Time for Repairs!



For a like-new appearance let us give your shoes a complete rebuilding job—For foot health and comfort ask for "STEERHEAD" genuine leather soles.

W. M. RHOADES
SHOE REPAIR SHOP
EDENTON, N. C.
429 S. Broad St. Phone 378

GOOD-BYE OLD-STYLE ENAMEL GLEEM DE LUXE ENAMEL IS 1951-FASHIONED!



Never Yellows!
Stays White!
Holds Its Lustre!

Not only does this aristocrat among enamels come to you whiter but it stays white . . . does not yellow with age! What's more, you'll find that Gleem DeLuxe still holds its brilliant lustre after ordinary enamels would have become dull and lifeless.

WEARS LIKE TILE!
WASHES LIKE TILE!

Gleem DeLuxe Enamel dries quickly to a uniform surface, absolutely free from brush marks or laps . . . that surface has all the smoothness and toughness of fine tile and is just as perfectly washable with no loss of lustre!

It's the greatest, it's the latest in enamels! Why take chances with conventional enamels of the old type? Gleem DeLuxe Enamel is "1951-Fashioned" all down the line!

Whitest White Ever Made!
Amazing Hiding Power!

No ordinary old-type enamel has the whiteness of "1951-Fashioned" Gleem DeLuxe Enamel!

A recently-developed resin vehicle in combination with the purest and whitest pigments obtainable gives Gleem DeLuxe an all-around perfection never before believed possible. Despite the flawless beauty of its finish, Gleem is not difficult to use. Although it brushes on with effortless ease, this great new enamel gives amazingly heavy hiding-power.

"WORLD'S
FINEST
QUALITY"



HUGHES-HOLTON HARDWARE CO.

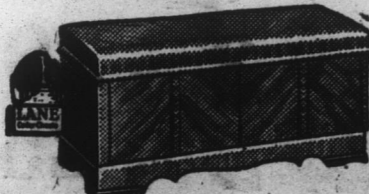
FOR HER GRADUATION

Parents—help her dreams come true!



Give her a
LANE CEDAR CHEST

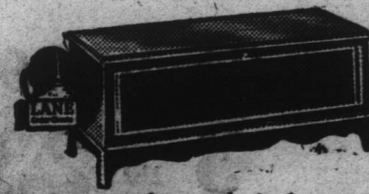
Start her collecting for a happy future with this stunning "Miss America Special" in blond oak or walnut. Has full-length drawer in base. Model #2628, \$69.95. Larger size in blond oak, walnut, grey walnut, mahogany, or cordovan, \$79.95. Moth protection guarantee.



Streamlined modern with walnut veneers, pialdo borders. Lane-patented self-rising tray. Model #2593. \$59.95



Distinctive modern of silver-grey walnut. Tray automatically lifts with lid. Model #2660, Also in blond oak, #2655. \$59.95



19th Century mahogany chest. Beautiful addition to the traditional room. Lane-patented self-rising tray. Model #2401. \$59.95

Lane is the only Pressure-tested, Aroma-tight Cedar Chest AS ADVERTISED IN LIFE

EASY TERMS \$125 A WEEK

Quinn Furniture Company
Edenton, N. C.

America's
Largest
and **Finest**
Low-Priced
Car!

LARGEST! with all the extra riding ease that comes from its extra size and weight

LONGEST in the low-price field—a full 197 1/2 inches—with the added measure of comfort and style that its length provides.

HEAVIEST in the low-price field—a solid 3140 pounds*—with that big-car feel of road-hugging steadiness!

WIDEST TREAD in the low-price field—a road-taming 58 3/4 inches between centers of rear wheels—for stability on curves and turns.

Most length. Most weight. Most width where it counts. They all add up to extra comfort and riding ease . . . extra value for your money. And here's the surprising fact! The Chevrolet line actually costs less than any other in the low-price field . . . Costs least, gives most!

*Styleline De Luxe 4-Door Sedan, shipping weight.



The Fleetline De Luxe 4-Door Sedan (Continuation of standard equipment and trim illustrated is dependent on availability of material.)



First and finest in the low-price field

TIME-PROVED
POWER Glide

Automatic Transmission

FINEST! with all these features and advantages found in no other low-priced car

BODY BY FISHER • UNITIZED KNEE-ACTION • VALVE-IN-HEAD ENGINE • JUMBO-DRUM BRAKES • SAFETY-SIGHT INSTRUMENT PANEL • PANORAMIC VISIBILITY • POWER *Glide* AUTOMATIC TRANSMISSION

Combination of Powerglide Automatic Transmission and 105-h.p. engine optional on De Luxe models at extra cost.

MORE PEOPLE BUY CHEVROLETS THAN ANY OTHER CARS

B. B. H. MOTOR COMPANY

"YOUR FRIENDLY CHEVROLET DEALER"

N. Broad and Oakum Streets

Edenton, N. C.