

HEALTH FOR ALL

SPRING FEVER

Spring fever—that lazy, listless feeling that attacks many of us during the first warm days of spring—is a common ailment at this time.

The "disease" can attack people of all ages and occupations, with varying degrees of severity. In the younger age groups, it frequently attacks students faced with study for end-term exams. Among adult victims are those who work near parks or amid other naturally scenic surroundings.

Symptoms include extreme lethargy, a revulsion for routine duties, and great difficulty in concentrating.

What most of us know as "spring fever" is a temporary condition, lasting a few days at the most. Usually it is the result of the body's attempt to adjust to a warmer season after months of cold winter.

Sometimes lethargy and fatigue at this time of year come because we actually are tired and the body is signaling that it needs a rest from routine work. When we say we "need a vacation," we are speaking the truth.

Fatigue and inertia can result when a person's diet lacks sufficient vitamins and minerals for physical fitness, and this can happen even when a person has a good appetite and eats a great deal. When this is the reason why a person lacks "pep," a well-balanced diet of good, nourishing foods will give the body enough of the right kind of fuel to keep energy high.

Some of us, particularly adults who work indoors, don't get enough fresh air and exercise. A short, brisk walk in the open air every day—now that the weather is more pleasant—can go a long way toward keeping the body toned up and warding off a feeling of loginess.

However, there are times when we make light of listlessness and lethargy as "spring fever" when they actually indicate something more serious. Often that "tired feeling" for no explainable reason, is a symptom of illness, sometimes of serious disease or infection, and demands immediate medical attention.

The person suffering from chronic, excessive fatigue should lose no time in getting to see his doctor for a thorough physical checkup, including

a chest X-ray, since unexplainable tiredness can be one of the symptoms of tuberculosis and a chest X-ray can find TB in an early stage.

CHIEF OF POLICE GEORGE DAIL SAYS

Watch out for the driver who thinks stop signs are for the other fellow!

This warning is based on accident reports of your Edenton Police Department. They tell us that many accidents were reported during 4 months of 1951 . . . accidents caused by drivers who ran stop signs!

You may be blameless yourself, but are you always able to protect yourself from an accident because of the mistakes of someone else? The driver who is really alert to traffic dangers always keeps on the lookout for others. He's the defensive driver who drives so he can avoid accidents . . . so he can side-step trouble when another's error threatens him with a knock-out punch.

Depend On Your Own Driving . . . Never On The Other Fellows!

Here's a tip from your Edenton traffic officers on avoiding traffic danger that strikes from the curb-side. By "curb-side danger" I mean the "Heigh, Ho, Let's Away" driver who pulls smugly away from a parking space without a look or a signal or a thought for traffic streaming toward him.

Avoid a fender-bending encounter with such thoughtless drivers by watching for the following signs of activity from parked cars: front wheels of a parked car turned outward, exhaust smoke coming from the vehicle, driver at the wheel, lights on at night, or a slight movement of the car.

Watch For These Signs . . . Keep A Cautious Eye On That Parked Car Just Ahead!

BARN DESTROYED BY FIRE

Edenton's Fire Department answered a call to the Louis Francis farm on the Mexico road Thursday morning, where a barn was consumed by the blaze. Origin of the fire is unknown.

The firemen arrived too late, however, to be able to save the burning structure.

This Week's Poem

By WILBORNE HARRELL

(Down In Carolina)

PORTRAIT OF A NATIVE

The things he sees in fields and brooks and leaves
And all the secrets nature tells to him
Are many. A grown man, yet he believes

In fairies; and he is full to the brim
With stories that a child delights to hear.

He reads the forest like his open hand
And his home is where all creatures are near

To the earth. His is an untrammelled land
And free, that has never known the iron heel

Of regimented might. A sweet peace broods
Over his homeland marshes and the teal

Still lifts its cry unto the splitudes.
The simple gifts of life he makes his theme,

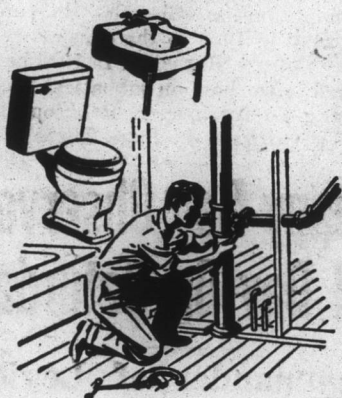
His stock in trade is just faith—and a dream.

ATHLETES FOOT GERM HOW TO KILL IT IN ONE HOUR

IF NOT PLEASED, your 40c back from any druggist. T-4-L is specially made for HIGH CONCENTRATION. Undiluted alcohol base gives great PENETRATING power. Kills IM-BEDED germs on contact. NOW at LEGGETT & DAVIS, INC.

PLUMBING

Expertly Done



We can take care of your plumbing at any time.

PHONE 351-W

Edenton Plumbing Company

EDWARD BUNCH, Mgr.

Savings Important To Defense!

Yes, we've rolled up our sleeves and are going to make America strong by building up our defenses. And in so doing, let us remember that our defense effort includes the protection of our economy, too. The inflation that comes from our over-spending is our own worst enemy and one of Comrade Stalin's most cherished allies. Let's fight together to stem inflation by resolving to save regularly. Each time you get that pay envelope, be sure to put aside money for savings FIRST!

BUY UNITED STATES SAVINGS BONDS

THE BANK OF EDENTON

EDENTON, NORTH CAROLINA

Safety for Savings Since 1894

MEMBER FEDERAL RESERVE SYSTEM

MEMBER FEDERAL DEPOSIT INSURANCE CORPORATION

For Quick Results Try a Weekly Classified Ad!

CAMEL HAS GREATEST LEAD IN 25 YEARS...
PUBLISHED FIGURES SHOW.

Camel Leads All Other Brands by Billions!

Make your own 30-Day Camel Mildness Test and see why!



Diamonds Watches Jewelry

FOREHAND JEWELERS

THE DIAMOND STORE OF EDENTON

USE YOUR CREDIT — PAY THE EASY WAY

NEXT TO BELK-TYLER'S

EDENTON, N. C.

Singer Sewing Machines

A REPRESENTATIVE OF THE

SINGER SEWING MACHINE COMPANY

605 EAST MAIN STREET

ELIZABETH CITY, N. C.

WILL BE IN EDENTON AND VICINITY

Within 24 Hours After Receipt of Coupon

TO HAVE A SINGER REPRESENTATIVE CALL

JUST FILL OUT AND MAIL THE COUPON

NAME

ADDRESS

Direction If Rural

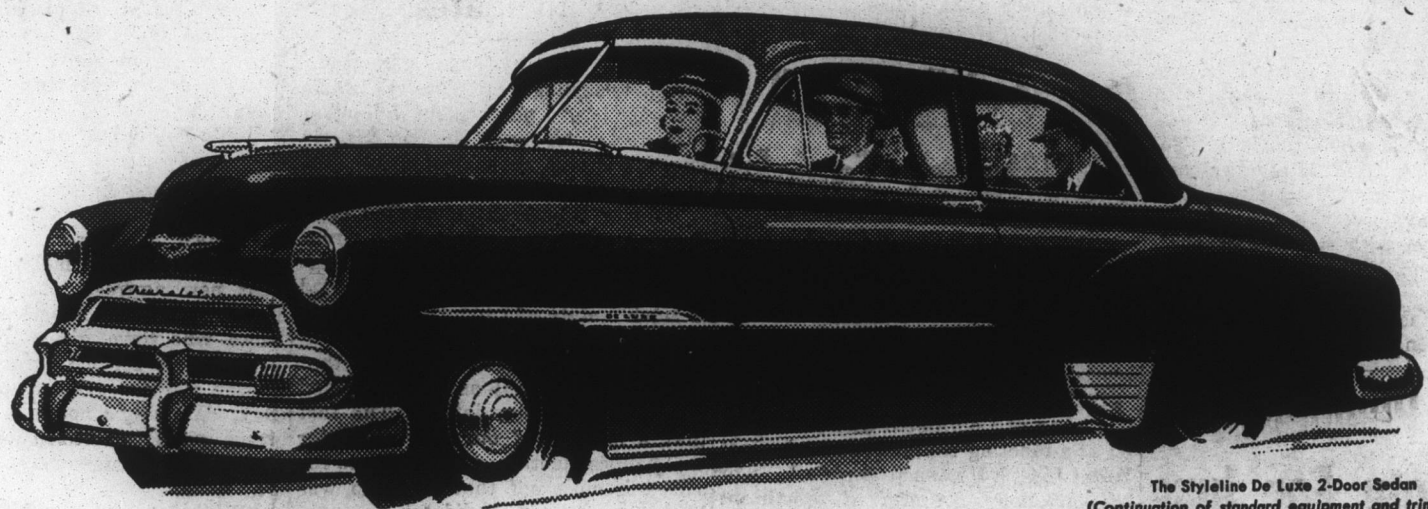
() Rent a SINGER Electric Portable

() Buy a new SINGER

I WISH () Have my machine repaired

() See a SINGER Vacuum Cleaner or Cleaner

TO () Sell my SINGER



The Styleline De Luxe 2-Door Sedan
(Continuation of standard equipment and trim illustrated is dependent on availability of material.)

America's Largest and Finest Low-Priced Car!



First and finest in the low-price field

TIME-PROVED POWER *Slide* Automatic Transmission

B. B. H. MOTOR COMPANY

"YOUR FRIENDLY CHEVROLET DEALER"

N. Broad and Oakum Streets

Edenton, N. C.

Here's why we say **LARGEST!**

It's **LONGEST**—measuring 197½ inches from bumper to bumper. You can see that extra length—and feel it in the smoother ride!

It's **HEAVIEST**—tipping the scales at 3140 pounds.* You can feel Chevrolet's big-car solidness in its steady, even way of going!

It has the **WIDEST TREAD**—spanning 58¾ inches between the rear wheels. That wider base means better roadability—helps steady the ride!

You'd expect to pay a little more for the largest low-priced car . . . longest, heaviest, with the widest tread. But not with all its extra size and weight—all its exclusive features—Chevrolet is the lowest priced line in the low-price field.
*Styleline De Luxe 4-Door Sedan, shipping weight.

Here's why we say **FINEST!**

FISHER BODY QUALITY • UNITIZED KNEE-ACTION RIDE • VALVE-IN-HEAD ENGINE ECONOMY • WIDE-VIEW CURVED WINDSHIELD • JUMBO-DRUM BRAKE SAFETY • SAFETY-SIGHT INSTRUMENT PANEL • TIME-PROVED POWER *Slide* AUTOMATIC TRANSMISSION. Combination of Powerglide Automatic Transmission and 105-h. pi engine optional on De Luxe models at extra cost.

MORE PEOPLE BUY CHEVROLETS THAN ANY OTHER CARS!