

Decline In Cotton Crop Is Forecast

September 1 Estimate Places Crop at 510,000 Bales

As of September 1 the 1952 Tar Heel cotton crop was placed at 510,000 bales. This is the same as the forecast on August 1 and compares with 542,000 bales harvested in 1951 and the 10-year (1941-50) crop of 523,000 bales, according to the State-Federal Crop Reporting Service.

Acres for harvest is now estimated at 693,000 acres—3,000 acres more than was harvested in 1951 and 13,000 above the acreage in 1950. The 10-year average acreage harvested is 739,000 acres. Abandonment since July 1 is estimated at 1.0 per cent—slightly less than average.

Lint yield per acre is now placed at 353 pounds, compared with 376 pounds in 1951; 149 pounds in 1950; and the average of 341 pounds.

Rains during August revived plant growth but added very little prospective production. The added foliage, if cotton is not declined, could result in rather heavy losses from boll rot. August weather prevented effective poisoning and on September 1 boll weevils were present in large numbers in all sections of the State and boll worms are becoming active in many counties. Boll worm infestation was mostly light as of September 1. Picking got under way in southern counties the last week of August. Heavy rains and strong winds have knocked some cotton down, especially in southern Piedmont areas, increasing the danger of loss from boll rot.

For the nation as a whole, a production of 13,889,000 bales is indicated based upon September 1 conditions. This estimate is based upon an indicated yield per acre of 270.0 pounds from 24,693,000 acres for harvest. Approximately 1,413,000 bales of the 1952 crop had been ginned to September 1.

Last year the United States produced 15,144,000 bales of cotton from 26,687,000 acres, averaging 271.9 pounds of lint to the acre. The ten-year (1941-50) average yield is 267.6 pounds and 11,775,000 bales production.

Use Your Head!

The judge had given his decision on a case and the attorney for the plaintiff rose and questioned it.

"I cannot allow you to reopen this case after I have given my decision," said the judge.

"Then I may as well sit down, Your Honor," replied the lawyer. "There's no use in knocking my head against a stone wall."

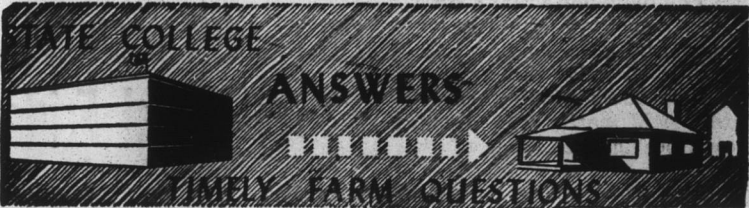
"I know there's no use in knocking your head against a stone wall," said the judge. "But I don't know any other person who could perform the operation with less personal injury than yourself."

In vain sedate reflections we would make. When half our knowledge we must snatch, not take. —Pope.

GM to Sponsor Football Telecasts



General Motors will sponsor the television football "Game of the Week" this year on the nationwide-63 television station network of NBC. In co-operation with the National Collegiate Athletic Association, GM will televise 11 selected games on successive Saturdays during the football season, concluding with the traditional Army-Navy game in Philadelphia November 29. The first game to be televised will be the Kansas-Texas Christian game at Lawrence, Kan., September 20. William F. Hufstader, GM vice-president in charge of distribution staff, is shown signing the contract for the games as Asa S. Bushnell, NCAA official (center), and Paul Garrett, vice-president of public relations staff for GM, look on.



Question: How can I protect lumber against termites?

Answer: Timbers used for construction purposes can be protected from termite attack by impregnating them with an approved chemical wood preservative, according to State College entomologists.

Considerable protection can be had by dipping the wood in a 5 per cent solution of pentachlorophenol in a light petroleum oil for three minutes, the U. S. Department of Agriculture points out. Another, although less reliable, method consists of brushing the surface of wood with this solution, using three coats.

Several coats of heavy paint applied to exterior woodwork will give some protection. All cracks, crevices and joints between lumbers should be filled with putty or plastic wood prior to painting to keep termites out.

Termites already in the wood can be killed, if the wood is movable, by placing in a chamber heated to 150 degrees for 90 minutes or 140 degrees for four hours, or a chamber at 15 degrees for four days. Insecticides such as trichlorobenzene, which is volatile and kills termites as it vaporizes, are also effective.

Fumigation is effective, but since the gases used are deadly, the work should be conducted only by a licensed

operator. A bulletin, entitled "Control of Subterranean Termites," Farmers Bulletin No. 2018, may be obtained by writing the Office of Information, U. S. Department of Agriculture, Washington 25, D. C.

Court Scene

Useless Partner — I'm afraid I played rather badly in that set, but my racket is a bit warped. I'll have to keep it in a frame.

She (bitingly)—You ought to keep it in a glass case.

This Week's Poem

By WILBORNE HARRELL

"The lives of great men all remind us We can make our lives sublime." —Longfellow.

ROUGH-HEWN

I am but lowly earth and common clay And not marble for an Angelo's hand; I am not granite block where genius may

Bring forth perfection — but just common man.

I am but clay for life to mold its will; May my soul be granite where carves divine: May my clay be stone and life's mallet strike

A rugged purpose from this heart of mine.

TWO MASSES NEXT SUNDAY IN EDENTON CATHOLIC CHURCH

The Most Holy Sacrifice of the Mass will be offered Sunday, September 21, at 8 and 11 A. M., EST., in St. Ann's Catholic Church, Edenton, each including Sermon on "Fifth To Tenth Commandments," Holy Communion, followed by Rosary for Peace, Sunday School, Mass Servers Instructions, with Confessions for half hour before Services, stated Father McCourt, Pastor, who invites everybody to all Services. Week-days at 7 A. M., EST., Mass, Communion, Rosary in Edenton Church.

TRY A HERALD CLASSIFIED AD

LIPTON TEA
THE BRISK TEA
1/4 lb. 35c

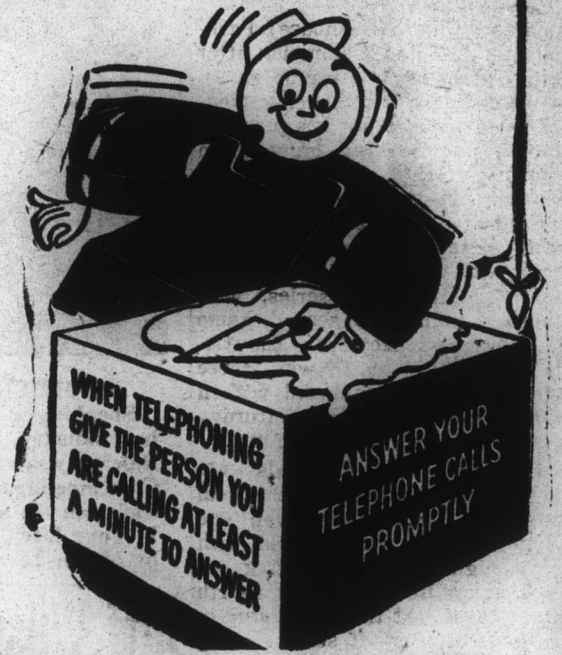
LIPTON TEA BAGS
THE BRISK TEA
Pkg. of 16—21c

P & Q
FOOD CENTER

...But only Time will Tell...

You can't judge a new maid from the first day... and you can't judge a cigarette without a steady try-out. Test Camels for 30 days. Your T-zone will tell you how mild and flavorful Camels are, pack after pack!

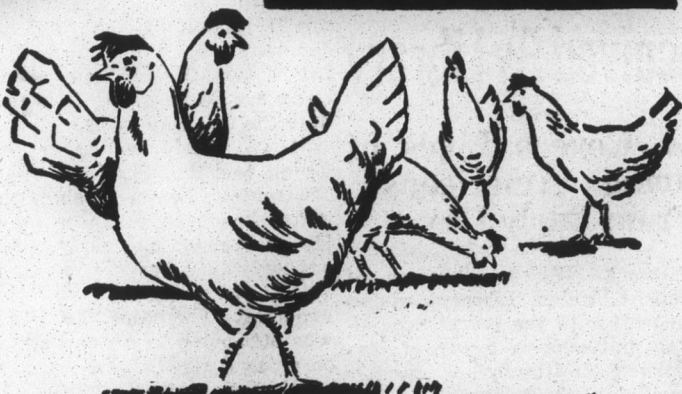
MAKE THIS YOUR CORNERSTONE FOR BETTER TELEPHONE SERVICE



Norfolk & Carolina Tel. & Tel. Co.

Elizabeth City — Edenton — Hertford — Manteo — Sunbury

NORTH CAROLINA UNLIMITED



MORE CHICKENS FOR MORE PROFIT!

Few phases of North Carolina agriculture can boast a more rapid growth in recent years than the poultry industry. Chicken breeding accounts for the phenomenal 2,600 per cent increase from 900,000 broilers in 1930 to 1950's more than 25,000,000. Such progress bolsters farm income tremendously and helps make North Carolina a better place to work, play and live.

Also contributing to the pleasant living that is North Carolina is the brewing industry's self-regulation program where brewers, wholesalers and retailers—in counties where malt beverage sales are permitted under state control—co-operate to maintain wholesome conditions for the legal sale of beer and ale.

North Carolina Division UNITED STATES BREWERS FOUNDATION, INC.



FORD'S FIRST with the MOST!

FIRST in POWER!

Ford's 110-h.p. Strato-Star V-8 is the most powerful engine... the only V-8 offered in a low-priced car! Ford's 101-h.p. Mileage Maker Six is the industry's newest, most modern Six!



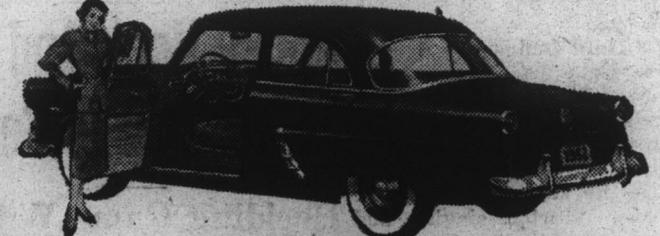
The '52 Ford brings you more power, more comfort, more "looks" and more "can do" than any other low-priced car! You can see it in Ford's new, longer, wider bodies of modern design. You can feel it in Ford's smoother, more level ride... in Ford's 25% easier steering. And, you can sense it in the more spirited response of the '52 Ford—whether it's the 101-h.p. Six or 110-h.p. V-8!

FIRST in RIDE!

For the first time, in the low-price field, you can enjoy a truly fine-car ride! Ford's new Automatic Ride Control with its diagonally mounted rear shock absorbers and new spring suspension gives you a bump-leveling, highway-hugging ride.

FIRST in STYLE!

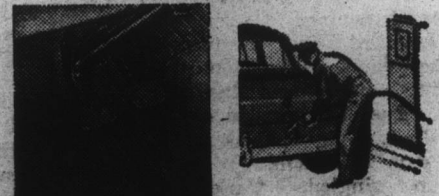
This longer, lower style leader has the newest, most advanced body in the industry! It's styled to stay beautiful for years, and it's quality-built to stay young.



FIRST in VISIBILITY! New Full-Circle Visibility gives you the only one-piece curved windshield, plus car-wide rear window, in Ford's field. New I-REST tinted glass... available on Custom and Crestline models... guards against glare and reduces heat.

FIRST in CHOICE!

Ford offers the widest choice by far in the low-price field. 18 models... 11 body styles... 2 engines: V-8 or Six... 3 transmissions: Fordomatic, Over-drive or Conventional... and the most body, upholstery and color combinations.



FIRST with the NEWEST!

You'll find Ford has made more advances for '52 than any other car in its price field. You get new features like Power-Pivot Clutch and Brake Pedals, suspended from above, to allow more foot room, eliminate dusty, drafty floor holes. You get Center-Fill Fueling for easier gas filling from either side. F.G.A.

Test Drive the '52 FORD

You can pay more but you can't buy better!

SEE YOUR FRIENDLY FORD DEALER

Conveniently Listed In Your Telephone Directory

