

1950 Class Of Chowan High Holds Reunion

Group Entertained By Bernice Williams and Horace Eason

Miss Bernice Williams and Horace Eason entertained members of the graduating class of 1950, Chowan High School, at a gala reunion on New Year's Eve at the Community Building.

The room was beautifully decorated, with the class colors, blue and gold, forming the color scheme. Blue and gold balloons hung from the center chandelier, with blue and gold streamers strung across the ceiling. Blue and gold candles provided the light for the evening. Tables were placed to form the letter "C."

After a few words of welcome by the host, followed by the class song, members introduced their guests and told of important happenings in their lives since their graduation. Notes were also read from those who were unable to attend. The prophecy from the class annual, "Chowan Chief," was read by Mr. Eason and after each class member's prophecy was read, he told the group what he actually is doing.

Bingo was then played, with the letters C-H-O-W-A-N being used. Numbers were called by the hostess, Miss Williams, with prizes being won by Mr. Nichols, principal of Chowan High during the year 1950, McKay Phthisic, Mrs. Wilbur Jordan, Mrs. Jarvis Winslow, Herbert Raye Lane and Otis Chappell.

Miss Bernice White entertained with several piano selections and after Mr. Whedbee asked the blessing, refreshments consisting of several kinds of sandwiches, potato chips, pickles,

WELL-SUITED SISTERS



These adorable little sisters are well-suited to any occasion in their smart denim skirts and jackets. One of the cotton denim suits is grey, the other brown. Both of the suits are trimmed in harmonizing plaid cotton at the collar and on the pockets. The trim little suits are designed in Everglaze denim by C. H. and E. Freyberg for the fashion-wise young lady.

cookies and soft drinks were served buffet style.

Records provided music for dancing until midnight, at which time the table was reset with eggnog, cookies and salted nuts. The group joined in singing "Auld Lang Syne" and many expressed the wish that the class would again hold a reunion in the not too distant future. Members of the class who attend-

ed were: Mrs. Wilbur Jordan, Mrs. McKay Phthisic, Mrs. Fred Bunch, Mrs. Joseph Byrum, Miss Bernice White, Mrs. Jarvis Winslow, Mrs. Otis Chappell, Miss Bernice Williams, Leon Blanchard, Herbert Raye Lane, Horace R. Eason and their husbands, wives or dates.

Miss June Blanchard, class president, arrived shortly before midnight to see the New Year in with her classmates.

Very Expensive

Son: "Papa, how much does it cost to get married?"

Papa: "There's a two-dollar down payment and then you pay your entire salary every week for the rest of your life."

Farm Conservation Forges Ahead

(Continued From Page One) with supervision over a larger territory, thus making it possible to have additional personnel for technical on-site assistance to farmers on the land. Still another factor in the enlargement of the conservation accomplishments is the utilization of the neighbor group plan of approach to the mapping and planning of farms. With the neighbor group plan all of the farms in a given neighborhood are planned or mapped at the same time, thus saving time and travel for the Work Unit technicians. Even greater accomplishments are

anticipated for the new year of 1953, in the Chowan Work Unit headquarters, according to R. C. Jordan, the local conservationist.

NOTICE TO OUR CUSTOMERS

Beginning Sunday, January 11, we will be closed all day every Sunday.

BILL'S PLACE

N. BROAD STREET

EDENTON, N. C.



Your Total Food Bill Is Less When You Shop at CS!

CS CRUSHED PINEAPPLE 2 NO. 1 CANS 31c
Special Price!



TRIANGLE PURE CREAMERY
BUTTER
lb. 73c

PURE ALL VEGETABLE NUCOA MARGARINE LB. Quarters 29c
SPECIAL PRICE—WISCONSIN MILD CHEDDAR CHEESE LB. 53c
KRAFT DELUXE SLICED AMERICAN CHEESE LB. 35c

FULL CUT BONELESS—U. S. COMMERCIAL
Round STEAK lb. 69c

U. S. Choice Colonial Pride Beef
U. S. CHOICE—FULL CUT BONELESS ROUND STEAKS. LB. 83c
U. S. CHOICE PINBONE OR SIRLOIN STEAKS LB. 83c
U. S. CHOICE—PORTERHOUSE, CLUB OR T-BONE STEAKS.. LB. 93c
U. S. COMMERCIAL—PINBONE OR SIRLOIN STEAKS LB. 65c
U. S. COMMERCIAL—PORTERHOUSE, CLUB OR T-BONE STEAKS. LB. 69c
ECONOMICAL—PLATE—BONE IN STEWING BEEF LB. 25c
DRESSED AND DRAWN—4 to 6 Lbs. FANCY FOWL.. LB. 49c

LARGE JUICY FLORIDA
GRAPEFRUIT 4 FOR 23c

A COLONIAL WEEK-LONG SPECIAL—LIBBY POTTED MEAT 3 4-OZ. CANS 26c YOU SAVE 3c

A COLONIAL WEEK-LONG SPECIAL—OLD VA. STRAWBERRY PRESERVES 12-OZ. JAR 25c YOU SAVE 4c

A COLONIAL WEEK-LONG SPECIAL—WRIGHT SWEET POTATOES 2 NO. 303 CANS 35c YOU SAVE 7c

A COLONIAL WEEK-LONG SPECIAL—BETTERYET PEANUT BUTTER 8-OZ. JAR 19c YOU SAVE 3c

A COLONIAL WEEK-LONG SPECIAL Fluffo Shortening 3 LB. CARTON 68c YOU SAVE 3c

LUSCIOUS WASHINGTON STATE JUICY BOSCH PEARS 2 LBS. 25c

SWEET CALIF.—RED EMPEROR GRAPES... 2 LBS. 29c
LARGE CALIF. GREEN PASCAL CELERY..... STALK 17c

LUSCIOUS GOLDEN RIPE LARGE BANANAS 2 LBS. 25c

NANCY CARTER Tested RECIPES

CHEESE SUPPER DISH

1 cup rice
1/4 cup Triangle butter
1 cup grated sharp cheese
1/2 cup CS flour
1 cup hot milk
1 cup Redgate tomatoes, heated

1/4 teaspoon soda
1/2 teaspoon EACH dry mustard, paprika, salt
Dash cayenne pepper
8 slices bacon, cooked

Cook rice. Melt butter in heavy pan. Add cheese; sprinkle flour on top. Cover. Cook over low heat until cheese has melted and bubbled through flour. Stir in milk. Add tomatoes mixed with soda and seasonings. Simmer until blended. Serve on hot rice; garnish with bacon. Makes 4 servings.

For specific recipes, homemaking or cooking information, write: Nancy Carter, Director of Home Economics, Colonial Stores, Inc., P. O. Box 4384, Atlanta, Georgia.

PICK OF THE NEST—GRADE "A" LARGE EGGS... DOZ. 65c

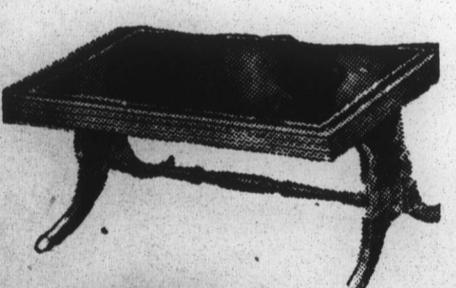
NOTICE!

Beginning Wednesday, January 14
Through September 2, 1953
THE FOLLOWING STORES WILL CLOSE
AT 1:00 P. M. WEDNESDAY AFTERNOON:

- THE BETTY SHOPPE
- BADHAM BROS.
- MALONE'S 5 & 10c STORE
- BELK-TYLER COMPANY

SPECIAL SALE TABLES

TWO WEEKS ONLY



- End Tables
- Lamp Tables
- Coffee Tables
- Record Tables
- Center Tables
- Step Tables
- TV Tables

ALL REDUCED FROM
25% to 50%
See Our Window Display TODAY
EDENTON FURNITURE COMPANY
PHONE 516 EDENTON, N. C.

