

## Russian Army's Medical Corps Is Below Standard

(Editor's note: Following is the fourth in a series of six articles comparing a U. S. Army combat infantry division with the infantry division of the Soviet Russian Army.)

The U. S. Army infantry division is larger than the Russian Army infantry division. It has approximately 18,000 men compared to 11,000 for the Soviet unit.

But this difference of about 7,000 spells the difference between a self-contained unit built on democratic, humanitarian standards and a division with very limited capability which is built on standards that border barbarism.

The largest single non-combat element of the U. S. infantry division is its medical service, which totals about 1,000 officers and enlisted men. The American people and the U. S. Army place a high value on human life, and everything possible is done to maintain the U. S. soldier in good health and to protect him not only against his military foe but against his environment as well.

With a traditional disregard for the lives and comfort of their men, Soviet infantry divisions have only about one-fourth the medical personnel of their American counterparts. Consequently, Soviet units have no company aidmen but depend on designated riflemen in each platoon who have received limited training in first aid and may or may not be free enough from combat duties to aid their comrades.

Similarly, Soviet battalion aid stations have no physicians but are staffed only by enlisted men with limited training.

In contrast, the American medical system affords the finest field medical care the world has ever known. This includes not only highly effective methods for treatment and evacuation of wounded, sick and injured but also aggressive preventive programs which afford the American soldier the maximum assurance against disease.

Korea has demonstrated unquestionably the effectiveness of this medical service. Deaths from battle injuries and wounds have been reduced to 2.4 per cent of all those reaching medical care, as compared with 4.5 per cent in World War II and eight per cent in World War I.

In addition, returns to duty among the wounded of the Korean conflict already have totaled about 85 per cent. Similarly, the Army's effective medical support has reduced deaths from disease in the Far East Command to only slightly more than one-tenth of one per cent.

A U. S. division can fight for long periods of time, re-supplying itself with food, ammunition, and equipment. But the Russian or satellite division is capable of sustained action for a maximum of five days. This has been illustrated time and again, both in World War II when entire Russian armies rolled to a halt every five days and again in Korea during the past two years.

A fundamental difference in the supply requirements of the American soldier and the Soviet soldier lies in the fact that the American is accustomed to a higher standard of

## No Room for a Garden? Then Build a Window Box

Here is a message for those who live in city apartments, but dream of the country, buy the garden magazines and read the garden section of the newspaper.

Your interest in gardening is deep seated, and you will be happier if it can be satisfied. Have you thought about the possibilities of a window box?

Here is the type of garden which everyone can grow, whether he lives in a suburb or a city. It will serve two purposes, first to decorate the house you live in, and what is even more important, it will satisfy to a surprising degree your desire to grow things.

To get this satisfaction, you must give serious attention to selecting the plants to grow, preparing fertile, porous soil, and if possible growing your own plants. It will be an excellent beginning to make your own window box, which can easily be done from the diagram herewith.

For a standard single window, a box 3 1/2 feet long, 8 inches deep and 10 inches wide is a good size. But measure your windows and make boxes to fit. Where larger, or multiple, windows demand greater length, the other dimensions must be larger in proportion, or single boxes may be provided for each window in a group.

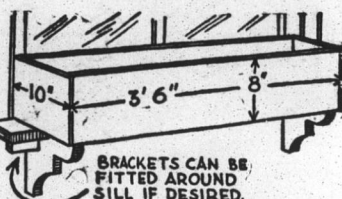
Think of the box as a decoration of the house; make it of a suitable size and a color to match the house color or trim. The flowers should be chosen to furnish a contrasting, yet harmonious color accent. There is a wealth of suitable varieties from which to choose.

Rich soil, of the type which florists call potting soil, must be used for window boxes. Because there is so little of it to feed the flowers, it should be well fertilized. A tablespoonful of chemical plant food for each square foot of soil should be used.

For the annual flowers, at least six hours of sun a day is necessary and this requires a south window. The best subjects are those of dwarf or trailing habit, the latter drooping festoons of bloom from the boxes. Petunias of the balcony type are excellent, as are the tall nasturtiums, the giant morning glories. Dwarf petunias, marigolds, ageratum, cal-



A window box should decorate the house.



Working drawing of Window Box

loppis, annual pinks, lobelia, dwarf morning glories, phlox, and zinnias can be grown.

Boxes which spend most of the day in shade offer a special problem. If the shade is that of a building, perhaps only foliage plants can be grown, such as ferns, fancy leaved caladiums, crotons, rubber plants and other florists' subjects.

If there is some sun, begonias will probably do well. Impatiens, the Zanzibar balsam, bearing flowers of salmon or rose on bushy plants 18 inches tall, are excellent in semi-shaded places. Violas thrive in partial shade, and the list of flowers which will do well increases as the amount of sun is enlarged.

## Visiting Preacher At Presbyterian Church

Services at the Presbyterian Church are announced as follows by the pastor, the Rev. James MacKenzie:

Sunday School Sunday morning at 10 o'clock. Morning worship at 11 o'clock. This Sunday the Lord's Supper will be celebrated, with Dr. J. W. Hassell, stated clerk of Albemarle Presbytery, presiding. Prayer meeting Wednesday night at 7:30 o'clock, when the lesson will be on the second coming of Christ, illustrated with a chart. Everyone is invited to attend all services.

Ping-pong room is open every evening after school and Saturdays. All teen-agers are welcome to use ping-pong table, putzies, checkers and good books.

## CHAIR OF UNITY OCTAVE IN EDENTON CATHOLIC CHURCH

Sunday, January 25, Feast of St. Paul's Conversion, the Church of Unity Octave, which is being observed throughout the Catholic world annually from January 18, Feast of St. Peter's Chair at Rome, daily to January 25, will close in St. Ann's Catholic Church, Edenton, at the 9 and 11 A. M., Holy Masses coming Sunday, each including sermon on "The Missionary Conquest of the World For Christ," Holy Communion, followed by Octave prayers for church unity, Rosary for same intention, Sunday School, stated Father F. J. McCourt, rector, who invites everybody to all services. Confessions for half hour before Sunday services and 15 minutes before week-days that will start at 8:15 A. M., include Communion and be followed by Octave prayers, Rosary.

The Daily Intentions are: January 18: The return of all the "other sheep" to the one Fold of St. Peter, the One Shepherd under God; 19: The return of all Oriental Separatists to Communion with the Apostolic See; 20: The submission of Anglicans to

the Authority of the Vicar of Christ; 21: That the Lutherans and all other Protestants of Continental Europe may find their way "Back to Holy Church"; 22: That Christians in American may become one in communion with the Chair of St. Peter; 23: The return to the Sacraments of lapsed Catholics; 24: The conversion of the Jews; 25: The Missionary conquest of the world for Christ.

Father McCourt urges everybody during Octave to daily pray: (Jn. 17:21) "That they all may be One, as Thou, Father, in Me and I in Thee; that they also may be one in Us; that the world may believe that Thou hast sent Me." V. "I say unto thee thou art Peter." R. "And upon this Rock I will build My Church." O Lord Jesus Christ grant to Thy Church that peace and unity which are agreeable to Thy Will; Who livest and reignest God forever and ever. Amen.

## Minutes Of Board Of Public Works

The Board of Public Works met this day in the town office at eight o'clock P. M., in regular monthly session. Present: J. H. Conger, chairman, Ralph E. Parrish and Dr. J. A. Powell.

The following bills for the month of November were examined and approved for payment:

Graybar Electrical Co., \$303.24; Electrical Equipment Co., \$54.57; Gen. Plastics Corp., \$355.00; Henry Eagleston Co., \$3.60; Charleston Rubber Co., \$3.10; Duro-Test Corp., \$45.60; Howerton Gowen Co., \$22.58; Gen. Electric Co., \$190.98; Hampton Roads Tractor Co., \$22.13; R. D. Wood Co., \$2.84; Burroughs, \$16.40; Gray & Creech, Inc., \$10.48; American Public Power Association, \$1.50; Thurston Motor Lines, Inc., \$5.48; Skyline Distributors, Inc., \$2.27; Chowan Herald, \$12.70; Jackson's Recapping Service, \$17.04; A. S. Smith Machine Co., \$75.99; M. G. Brown Co., \$11.91; Chowan Motor Co., \$2.50; Bunch's

Garage, \$25.39; Dail & Ashley, \$1.00; Edenton Ice Co., \$32.93; Hughes-Holton Hardware Co., \$18.30; Byrum Hardware Co., \$3.99; Va. Elec. & Power Co., \$6,794.79; Railway Express Agency, \$1.97; N. C. Tel. & Tel. Co., \$11.55; Sinclair Refining Co., \$63.08; Postmaster, \$32.80; Wesley Chesson, Jr., \$65.72; General salaries paid for month of November, 1952, \$2,822.91; total, \$11,034.24. Received from collector for current water and merchandise, \$16,053.88. Amount of receipts in excess of disbursements, \$5,019.64.

Amazing  
An English lad and an Indian guide were on a camping trip in the States when they came to a trout stream. "You like fish, huh?" asked the Indian.

"Yes," replied the Englishman briefly.  
A year later the English lad again met the Indian.  
"How!" said the Indian, raising his hand gravely in welcoming the lad. "Fried," replied the Englishman.

## DEPENDABILITY



INTELLIGENT, devoted, unselfish, dependable. A good dog is truly Man's best friend! He companions our lonely hours, guards our homes and children... and asks nothing but permission to continue serving.

Intelligent, unselfish, thoughtful service is behind our reputation for dependability. Your choice of appointments determines the cost of the ceremony.



**WILLIFORD**  
Funeral Home  
PHONE 231-EDENTON N.C.  
THE HOME OF THE ALBEMARLE MUTUAL BURIAL ASSOCIATION

living than that of his Russian counterpart.

Virtually all U. S. soldiers in Korea now are receiving hot foods. Front-line troops are receiving at least two hot meals a day, and the diet is more varied, contains better foods, and is prepared better than the regimen to which the Russian masses are accustomed.

To determine reaction of U. S. Army troops to the Soviet Army basic ration, a test feeding of three meals corresponding to typical Soviet Army menus was served soldiers from three battalions of the Pacific Command. It was rejected as "terrible."

## "DELINQUENT GIRL" TELLS OF TRAGIC LIFE

How does a young girl start on the downward path? What can she do to save herself? Read how one wayward girl overcame tragedy in the poignant story of her life titled "I Was a Delinquent Girl," one of many features in the February 1st issue of

THE AMERICAN WEEKLY Magazine in Colorgrature with the BALTIMORE SUNDAY AMERICAN

Order From Your Local Newsdealer

TRY A HERALD CLASSIFIED AD

HAVE US FILL YOUR TANK — with — FUEL OIL and KEROSENE Harrell & Leary

Phone 459

## SALE VALUABLE FARM EQUIPMENT

10:00 A. M.

Saturday, January 24, 1953

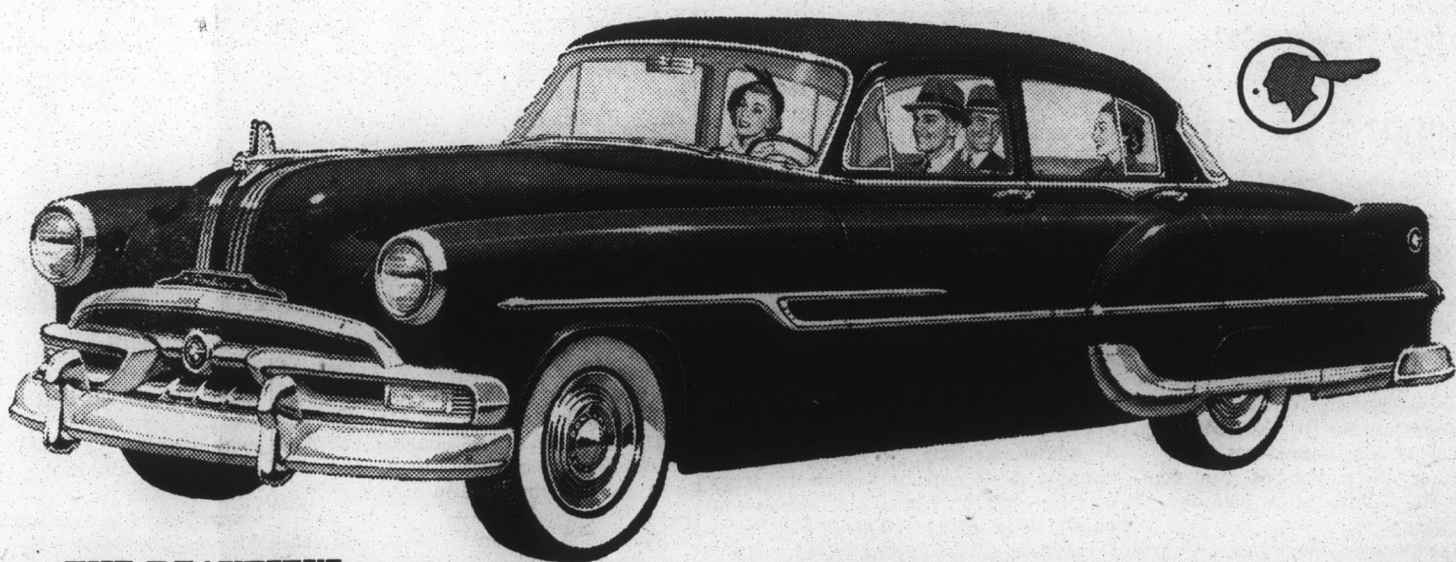
TRACTOR TRACTOR EQUIPMENT MULE

OTHER FARM IMPLEMENTS

C. D. Privott Farm

3 Miles From Edenton on Highway 17

## COME IN AND SEE THIS GREAT NEW GENERAL MOTORS MASTERPIECE!



THE BEAUTIFUL 1953 *Dual-Streak* Pontiac

Bigger and Better in Every Way and NO INCREASE IN PRICE!

Completely New Dual-Streak Styling

New Longer Wheelbase

Longer, Lovelier, Roomier Bodies

Spectacular New Over-all Performance

New One-Piece Windshield-Panoramic Rear Window

Pontiac's Wonderful New Power Steering\*

\*Optional at extra cost.

Beautifully new in styling from bumper to bumper, the great new 1953 Pontiac represents an outstanding value in many ways: It gives you a longer 122-inch wheelbase—and roomier, more luxurious bodies. Pontiac's over-all performance is even more spectacular for 1953—with remarkable steering and parking ease. For performance, economy and deep-down value, the 1953 Pontiac is indeed an automobile masterpiece well worth inspecting.

ENTER GM'S \$194,000 BETTER HIGHWAY AWARDS CONTEST

New and Beautiful Proof That Dollar for Dollar You Can't Beat a Pontiac!

CHAS. H. JENKINS MOTOR COMPANY, Inc.

105 to 109 E. Queen Street

Phone 147

Edenton, N. C.

CHAS. H. JENKINS AND COMPANY

EDENTON

WINDSOR

WILLIAMSTON

AHOSKIE

AULANDER

## January Tire Sale

NOW

SPECIAL DISCOUNT

TO YOU

DURING THE MONTH OF JANUARY

Lee - Firestone - Dunlop

COMPLETE LINE OF NAME BRAND TIRES AND TUBES

PRICE QUOTATIONS COST YOU NOTHING—

LET US GIVE YOU A PRICE!

BILL PERRY'S TEXACO SERVICE

NORTH BROAD STREET

PHONE 57