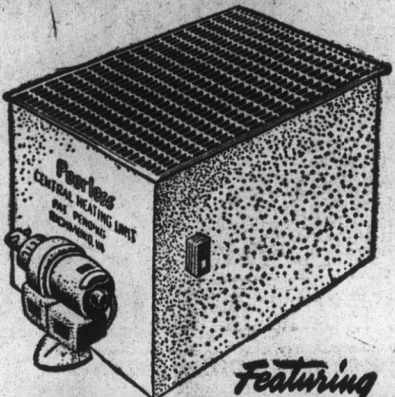


Woman's Club Sponsors Card Party February 26

The Edenton Woman's Club will sponsor a subscription card party which will be held in the Teen Age clubroom at the Edenton Elementary School Thursday night, February 26, at 8 o'clock.

Those desiring tickets are asked to contact Mrs. Nick George, phone 314-J, not later than Thursday, February 19. Those who play are requested to bring their own cards.

**THE NEW!
PEERLESS
FULLY AUTOMATIC
CENTRAL HEATING UNIT**



Featuring
GUN TYPE PRESSURE BURNER
PLUS
**ABSOLUTELY THE FINEST
CONSTRUCTION EVER OFFERED**

Edenton Oil Company
W. J. YATES, Manager
PHONE 158

This Week's Poem

By WILBORNE HARRELL

TELL ME, GYPSY

Come let me read in the palm of your hand
The auguries of fortune and fate,
And let me tell you as I quickly scan
Good things of life that lie in wait.

Ah, there are many riches in store for you,
Great joy and love and golden days;
And here I see that your sorrows are few,
And happiness comes in many ways.

I see your Life line runs on very far,
No clouds ahead or stormy weather,
And your Heart line runs with a merry song
'Til Heart and Fate are joined together.

And, I think, for you 'twill a nice fate be,
For he's handsome and tall and dark—
Oh, the palm of your hand is a charted sea
Where Life and Love and Fate embark.

BPW Committeemen Requested To Meet

Mrs. Annie Mills, president of the Business and Professional Women's Club, calls attention to a meeting of all committee chairmen to be held Thursday night of this week in the club room at the Hotel Joseph Hewes beginning at 8 o'clock.

Important business must be discussed before the regular monthly meeting of the club on Thursday night, February 19, so that all members are especially urged to attend.

Hospital Auxiliary Is Off To Good Start

The work of the Hospital Auxiliary is getting a fine start for 1953 with splendid officers and committees. Mrs. Martin Wisely will head the group as president with Mrs. Clarence Leary, Sr., vice president; Mrs. A. I. Phillips, secretary, and Mrs. Frank Elliott, treasurer.

Standing Committee Chairmen are as follows:
Grounds—Miss Rebecca Colwell and Mrs. John Wood.
Finance—Miss Catherine Brown and Dr. Martha Wood.
House—Mrs. George Hoskins and Mrs. A. E. Jenkins.
Sewing—Mrs. L. A. Patterson and Mrs. E. N. Elliott.
Membership—Mrs. Lynn Byrum.

SOCIETY MEETS TUESDAY

The Woman's Society of Christian Service of the Methodist Church will meet next Tuesday, February 17, in the home of Mrs. J. H. Thigpen at 7:30 o'clock. Mrs. Thigpen and Mrs. G. D. Asbell will serve as co-hostesses.

Club At Center Hill Adopts New Project

On Friday night, February 6, the Center Hill Home Demonstration Club held a joint meeting when a covered dish supper was served.

County Agent C. W. Overman showed films and gave a very interesting talk on family life and sharing work.

At the meeting a discussion was held on building a new club house. With all attending saying it was the best project the club could adopt for the year, club members are hoping everyone in the community will work together and make this a real community project.

On February 17 at 7:30 P. M., all the Boy Scout committeemen and interested people are asked to attend a Scout meeting at the home of Mr. and Mrs. E. P. Jones.

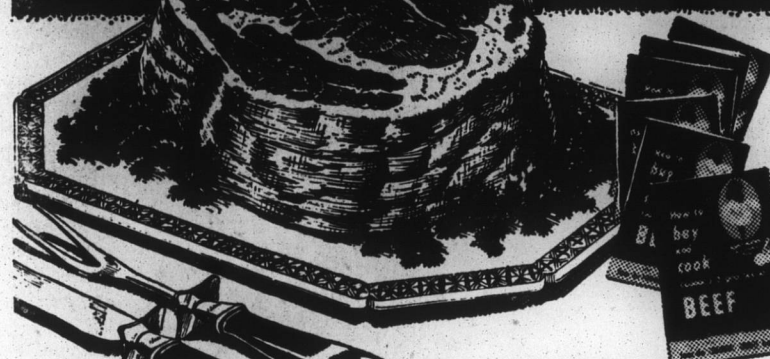
NOTICE!
I Earnestly Solicit Your Business
And Support at
**J. C. PARKS
Sinclair
Service Station**

To further serve you better, we will remain open Sunday from 7 A. M. to 9 P. M.

Stop in after Church or any-time.

J. C. PARKS

Buy and enjoy **Colonial's Two Grades of Beef**
You get a choice...and a Home Economist to help you!



All Colonial Stores offer you beef in two grades at two prices — COLONIAL PRIDE BEEF, which is government-graded U. S. Choice or U. S. Prime, and BUDGET BEEF, which is U. S. Commercial. Both grades contain the same high quality proteins, minerals, and vitamins. Both grades can be made tender and tasty by correct cooking.

Nancy Carter tells you "How to Buy and Cook Colonial's 2 grades of Beef"

In her new free folder now in all Colonial meat departments, Colonial's Director of Home Economics explains with illustrations exactly how to cook each grade for maximum tenderness and eating enjoyment. Get your free copy! And get the most in value and good eating out of every purchase of Colonial's guaranteed 2 grades of beef.



U.S. COMMERCIAL—BUDGET BEEF

ROAST

BLADE SQUARE-CUT CHUCK LB. **35c** 7" CUT RIB LB. **53c**

U.S. CHOICE—COLONIAL'S FINEST—BLADE-SQUARE CUT CHUCK ROAST ... LB. **39c**

U.S. CHOICE—COLONIAL'S FINEST—7" CUT RIB ROAST LB. **63c**

MADE FRESH—SOLD FRESH GROUND BEEF LB. **35c**

WELL FLAVORED STEW BEEF

Plate Bone in Lb. **19c** Boneless All Meat Lb. **63c**

Head-Tail and Finn Off FRESH KING MACKEREL

LB. **35c**
FRESH KING MACKEREL STEAKS LB. **39c**

FANCY TENDER STRINGLESS

GREEN BEANS

2 LBS. **39c**

U.S. NO. 1 FLA. RED BLISS

NEW POTATOES

4 LBS. **29c**

U. S. NO. PENNSYLVANIA WHITE

POTATOES

10 lbs. **39c**

Seabrook Farms

FROSTED FOODS
GRADE "A"—TOP QUALITY

EXTRA FANCY PEAS
WHOLE LEAF SPINACH
PEAS & CARROTS
MIXED VEGETABLE
CUT GREEN BEANS

5 PKGS. **99c**

DRISCOLL FROZEN SLICED STRAWBERRIES .. 4 10 1/2-OZ. CANS **99c**

LIPTON'S EASY TO FIX—TOMATO VEGETABLE SOUP MIX 3 2 1/2-OZ. PKG. **37c**

SAVE DURING OUR BIG
Libby
SALE!

A COLONIAL WEEK-LONG SPECIAL
LIBBY'S CORNED
BEEF HASH
16-OZ. CAN **29c**

A COLONIAL WEEK-LONG SPECIAL
LIBBY'S
PEACHES
2 NO. 303 CAN **39c**

A COLONIAL WEEK-LONG SPECIAL
LIBBY'S
Tomato Juice
46-OZ. CAN **29c**

A COLONIAL WEEK-LONG SPECIAL
LIBBY'S EARLY
JUNE PEAS
NO. 303 CAN **25c**

A COLONIAL WEEK-LONG SPECIAL
LIBBY'S ALL GREEN
LIMA BEANS
NO. 303 CAN **23c**

A COLONIAL WEEK-LONG SPECIAL
LIBBY'S SLICED
PINEAPPLE
NO. 1 CAN **17c**

**NANCY CARTER
Tested
RECIPES**

FROZEN PINEAPPLE AND CHEESE SALAD

1 teaspoon u-flavored gelatin 1/8 teaspoon paprika
2 tablespoons cold water 2 drops Worcestershire sauce
2 3-ounce packages cream cheese 1 cup drained CS crushed pineapple
2 tablespoons Mother's mayonnaise 1/2 cup heavy cream, whipped
1/4 teaspoon salt

Soak gelatin in water in small bowl; let it soften 5 minutes. Set bowl over hot water; stir gelatin until dissolved. Blend cream cheese with next 4 ingredients. Combine pineapple with gelatin; add to cheese blend. Fold in cream. Turn into a freezing tray. Freeze with the control set at coldest point. To serve, cut into small squares and arrange 4 or 5 on a crisp lettuce leaf. Serve with French dressing. Makes about 6 servings.

For specific recipes, homecoming or cooking information, write: Nancy Carter, Director of Home Economics, Colonial Stores, Inc., P. O. Box 1012, Atlanta, Ga.

Kentucky Straight Bourbon Whiskey

OLD STAGG

\$2 30 PINT
\$3.65 4/5 Qt.

FULLY AGED FOUR YEARS

OLD STAGG

KENTUCKY STRAIGHT BOURBON WHISKEY

BOTTLED BY THE STAGG DISTILLING CO., FRANKFORT, KENTUCKY