

Large Scale Testing Of Polio Vaccine Be Tried On Children

Plans are now being made by the National Foundation for Infantile Paralysis for large scale testing of a polio vaccine to determine how effective it is in protecting against the disease under natural conditions of exposure, local county chapter officials have been advised.

According to Basil O'Connor, head of the National Foundation, it is hoped the study can get under way this winter. Such a validity test would entail the vaccination of hundreds of thousands of children during a non-epidemic period and then observing what protection results when outbreaks of polio occur, he said.

As soon as plans are complete the details of the vaccine validity study will be made known.

O'Connor made the announcement of the proposed study following the report on polio vaccine studies presented by Dr. Jonas E. Salk of the University of Pittsburgh at the annual meeting in Miami last week of the American Academy of Pediatrics. The Pittsburgh scientist's investigations are being supported with March of Dime funds.

"On the basis of Dr. Salk's recent finds, as well as on the studies of other scientists, the Foundation is now formulating definitive plans for an evaluation of the effectiveness of polio vaccine," O'Connor said, pointing out that since 1949 remarkable progress has taken place in polio research.

In 1949, he said, a major obstacle which was blocking the efforts of scientists in developing a means of preventing polio was removed. Another scientist supported by the National Foundation—Dr. John F. Enders of Harvard and the Children's Hospital in Boston—accomplished this with the discovery of a method for growing polio virus in test-tube cultures of non-nervous tissue, O'Connor explained.

In less than two years this was followed by another achievement—the identification of three types of polio virus capable of causing the human disease. "That knowledge resulted from the cooperative efforts of teams of scientists from the universities of Southern California, Utah, Kansas, and Pittsburgh," he said. "These two major discoveries—both of which were made possible by the American public's support—are fundamentally responsible for the recent rapid advances in the fight against infantile paralysis."

SWETS WILL AGAIN PREACH AT PRESBYTERIAN CHURCH

During the absence of the Rev. James MacKenzie, pastor of the Edenton Presbyterian Church, Chaplain Swets is conducting the regular 11 A. M. worship service. Everyone is invited to this and all services at the Presbyterian Church. Sunday School at 10 o'clock.

The only way to have a friend is to be one. —Emerson.

FOR SALE
160 ACRE FARM
LOCATED IN PARADISE SECTION
110 Acres Cleared
5 Dwellings
3 Barns

CAMPEN - SMITH
REAL ESTATE
Phones 141 or 8

SOUTHERN COMFORT



FIFTH \$5.15
PINT \$3.20

100 PROOF LIQUOR
SOUTHERN COMFORT CORP.

Over Quarter Million See Outdoor Dramas

"Unto These Hills" at Cherokee Draws Largest Attendance

Paid attendance at North Carolina's four summer season outdoor dramas was 255,107 in 1953, exceeding the quarter million mark for the second successive year.

The pioneer in this field, Paul Green's "Lost Colony" on Roanoke Island, counted 52,150 paid admissions to exceed last year's gate by 5,884 despite two rainouts and a hurricane this year. "The Lost Colony" began in 1937 and, except for the coastal blackout years during World War II, has shown annually in its waterside amphitheatre on the actual site of the first English colony in America. It completed its 652nd performance at the end of its 13th season this year.

During that period "The Lost Colony" has played to more than 650,000 persons, including many school children admitted free.

The largest attended outdoor drama both in North Carolina and the nation was "Unto These Hills" at Cherokee, on the Cherokee Indian Reservation near the entrance to the Great Smoky Mountains National Park. "Unto These Hills" played to 137,750 paying customers in its 4th season, which was marked by the only rainout in its history.

"Horn In The West" at Boone, near the Blue Ridge Parkway, played to 43,384 in its second season. Unique among the dramas in that it has no narrator, "Horn In The West" is the work of Kermit Hunter, also author of the drama at Cherokee.

Also in its second season, "Thunderland" at Asheville played to 21,823 persons.

All dramas plan to open their 1954 seasons the third week in June and play until or through Labor Day.

GI Term Insurance Now Automatically Renewed

Veterans with GI term insurance no longer have to worry about renewing their policies before they expire.

Veterans Administration said that in accordance with legislation which went into effect on July 23, it will renew expiring term policies automatically, if the old policies are not lapsed but in force at the end of the term period, with the final premium having been paid on time.

The new procedure covers only GI

term insurance policies expiring on or after July 23, 1953.

In the year from July 1, 1953 to June 30, 1954, approximately 270,000 World War I and World War II term policies are expected to be renewed automatically under the provisions of this law, according to VA estimates.

Although the law also provides for automatic renewal for the more recent post-Korea term policies, none of these is scheduled to expire in the twelve-month period, because they have not been in force long enough.

Aside from the advantage to veterans, it is estimated that the new procedure will save around \$600,000 per year in the costs of administering the GI insurance operations.

Once the automatic renewal is effected, VA said, the veteran has a new 5-year term policy on which he must pay the increased premiums on time if he wishes to be covered against death. If he misses any premium payments, including the first renewal premium, he may reinstate the policy at any time before the end of the term period under the usual reinstatement procedures.

When a term policy is renewed, the holder has a higher premium rate to pay than on the original policy, since the premium is based on the age of the holder at the time the renewed policy becomes effective.

Test Of Patriotism

"What would you call a perfect citizen?"

"A man who feels like singing the National Anthem when making out his income tax return."


WATCH FOR GRAND OPENING ANNOUNCEMENT IN NEXT WEEK'S CHOWAN HERALD —

Attend And Register To Win One Of Many Valuable Door Prizes — REFRESHMENTS — FREE!



Western Gas Service, Inc.
YOUR GREEN'S FUEL DISTRIBUTOR

WE CAN ... Solve Your Christmas Shopping Problems in 5 Minutes ...



See our **NEW GRUEN WATCHES**
Your Quality Watch Value

17 JEWELS \$39.75 each

GRUEN ESTHER. Exquisitely designed, gold-filled case. 17 Jewels. \$39.75

GRUEN GRAHAM. Distinctive, masculine model. Gold-filled 17 Jewels. \$39.75

GRUEN COQUETTE. Delightfully petite, gold-filled case with matching bracelet. 17 Jewels. \$59.50

GRUEN AUTOWIND LAKEHURST. Handsome self-winder. Water and shock resistant. Luminous dial, expansion band. 17 Jewels. \$62.50

8 Sparkling Diamonds in this glorious 14K yellow and white gold Bridal Ensemble. \$149.90

Superbly designed birthstone ring for men. Massive 10K Yellow Gold Mounting. \$27.90

Smart shoppers don't wait, because they can choose with ease from full assortments of gifts in a wide range of prices. What's more, our collection of Gruen Watches far surpasses any we've had before. It means that you can depend on us for the model you want at the price you want to pay! Be wise... Buy now

Prices include federal tax

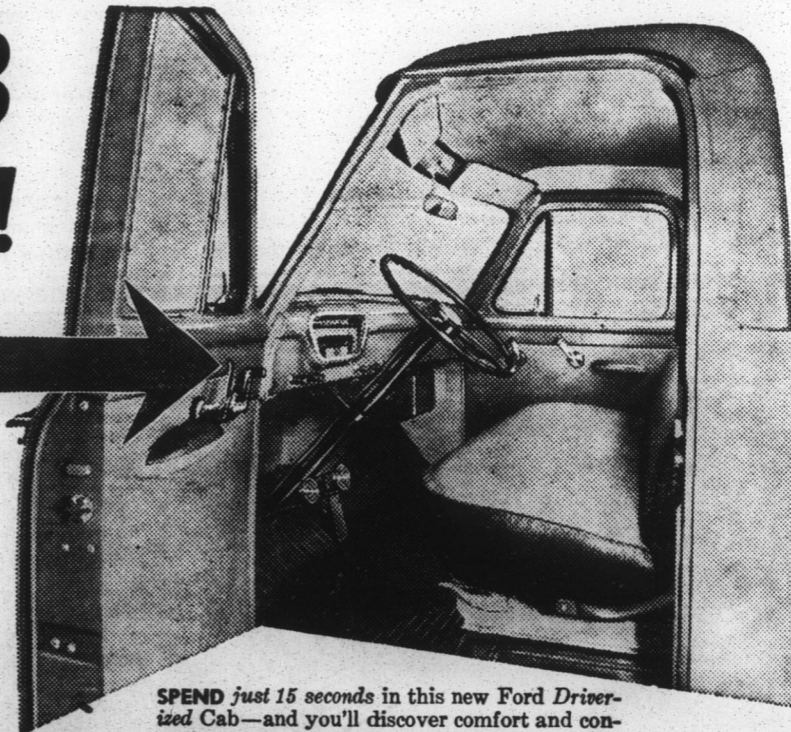
You Never Pay Extra for Easy Credit Terms at Our Store

CAMPEN'S JEWELERS
AUTHORIZED GRUEN JEWELER

For Quick Results, Try a Herald Classified Ad!

New! DRIVERIZED CAB Comfort Cuts Fatigue!

Only FORD TRUCKS have it!



SPEND just 15 seconds in this new Ford Driverized Cab—and you'll discover comfort and convenience you never thought possible in a truck! Yours only in all-new Ford Economy Trucks!

Make the 15-second SIT DOWN TEST! See your Ford Dealer!



SWING open the new wider door! There's plenty of room between seat and door pillar. Door handles are push-button type you get on quality cars. Door latches are new rotor type.



SLIDE into the wide, comfortable seat. Bounces on it to test the super-cushioning of Ford's seat and non-sag seat springs. Sweep your eyes across the new curved one-piece windshield!

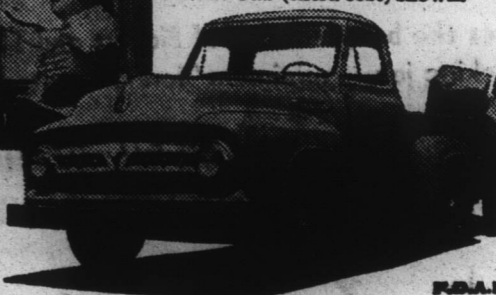


GLANCE back through the 1-ft. rear window. Without leaning you can see the space you're backing into. Why pay extra for rear quarter windows? Note deeper side windows, too.



STRETCH your arms into big-cab roominess. More hip room than any of the 5 other leading makes!

WORLD'S most powerful Pickup truck (below)—6½-ft. box, over 4 ft. wide. V-8 or Six. Deluxe Cab (extra cost) shown.



SEE YOUR NEAREST FORD DEALER