

Mitchener Urges Generous Use Of Christmas Seals

Chairman Asks All to Return Contributions At Once

John Mitchener, Jr., Christmas Seal Sale chairman for Chowan County, announces that seal contributions are gradually coming in and he asks that these seals be used generously on cards, letters and Christmas packages so that all who see them will know that Christmas Seals fight tuberculosis.

Christmas Seals are the only income of the Tuberculosis Association and seals are sent to the people only once a year. It is their protection against tuberculosis. It helps pay for chest X-rays for those unable to pay, health education, X-ray contacts of tuberculosis patients and a rehabilitation program. In all 80 per cent from seals remains in the county where raised.

"Your contribution is much needed for the program," says Chairman Mitchener. "so please send in your contribution at once."

THANKSGIVING LEFT OVERS

Furnished by the Home Service Department of the Virginia Electric & Power Company.

Most homemakers would like to steer away from hash this year in order to consume those Thanksgiving Day dinner "leftovers." Wouldn't you?

If so, this variation of an old favorite, Buffet Turkey Salad, should capture the approval of the entire family.

- 2 cups cubed cooked turkey.
- 1/2 cup chopped celery.
- 1/2 cup blanched almonds.
- 2 T chopped green olives.
- 2 hard-cooked eggs.
- 2 T chopped ripe olives.
- 2 T chopped mixed pickles.
- 1/2 cup mayonnaise.

Combine ingredients and serve on lettuce leaves or in sandwiches for light supper or luncheon.

Turkey a la King also is designed to use up "leftovers." Delicious over biscuits, toast, rice and plain or fried noodles.

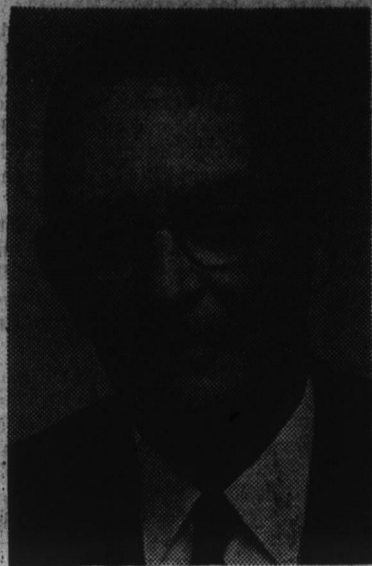
- 3 T. butter
- 4 T. flour
- 1 c. broth
- 1 c. milk
- 1/4 t. salt
- 1/2 t. pepper
- 1 t. grated onion
- 1 1/2 c. diced cooked turkey
- 1/4 c. chopped green pepper
- 1/4 c. chopped pimento
- 4 oz. can mushrooms (drained)

Melt butter, add green pepper and cook for 5 minutes on "low" heat, add flour stir until blended. Add broth and milk. Stir until thickened. Add seasonings and turkey, heat thoroughly. Serves 6.

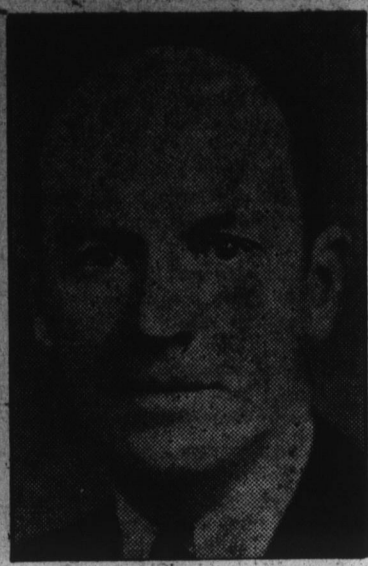
Turkey Mousse is another way in which "leftovers" can be utilized.

- 4 envelopes unflavored gelatin
- 1 cup cold broth
- 1 1/2 c. boiling turkey broth
- 2 cups finely chopped or ground cooked turkey
- 1 cup finely diced celery
- 1/4 cup finely diced sweet pickle

Rural "Men Of The Year"



JOHN W. UMSTEAD.



J. H. CLARK.

The Progressive Farmer presents its 1953 "Man of the Year in Service to Rural North Carolina" jointly to John W. Umstead and James H. Clark. To Mr. Clark "for what he has done to give us more general hospitals," and to Mr. Umstead "for his great work in increasing both the quantity and quality of our hospital service to the mentally sick."

- 1/4 cup finely diced green pepper
 - Parsley or celery leaves
 - 1 pimento, chopped
 - 1 cup mayonnaise or salad dressing
 - 1/2 teaspoon salt
 - Dash of cayenne
 - 1/4 teaspoon white pepper
 - 2 or 3 tablespoons lemon juice
 - 1 cup heavy cream, whipped
 - Deviled egg halves
- Soften gelatin in the cold broth. Dissolve thoroughly in boiling broth. Chill until jelly-like. Combine turkey, celery, pickles, pepper and pimento. Add mayonnaise, seasoning and lemon juice. Add thickened gelatin mixture. Fold in the whipped cream. Taste and add more seasoning if necessary. Pour into a 1 1/2 to 2 quart mold. Chill. Unmold. Garnish with the greens and deviled eggs. 10 to 12 servings. Increase gelatin to 5 envelopes in warm weather.

A poor man is a healthy man; a healthy man is a rich man.
—German Proverb.

GREAT OAK



86 proof, 70% Grain Neutral Spirits
Austin Nichols
60 Years Inc.

\$2.00 pint
\$3.20 fifth

Farm Equipment Field Day Successful Affair

(Continued From Page One)

ing, planning and working together.

"In the last thirty years our farm population has been reduced more than half and, yet," said Mr. Ballentine, "we are producing more food and fiber with only 15 per cent of our national population on the farms. This increased production has been brought about through mechanization, research, and education. Farmers, in

general, are taking advantage of only a small amount of the research information that is available to them. Our continued progress will be determined by research and the adaption of new practices by our farm people."

A Dutch barbecue dinner was then enjoyed by 500 or more people. "Chub," the barbecue server, and his co-workers, did an excellent job in feeding this group in approximately 20 minutes. Cold drinks were furnished by the equipment dealers. The efficiency with which the schedule operated allowed those in charge to gain time rather than lose it. At 12:40 a second dealer demonstration was held.

Scott Harrell and Leonard Small, the Ferguson equipment dealers, and their co-workers, staged an excellent demonstration with the Ferguson equipment. Although an apparently medium sized tractor, it moved right along with reasonably heavy loads. The quick change of implements impressed the group.

At 1:35 Thomas Byrum, International Harvester dealer, and his co-workers, took over. They demonstrated Farmall tractors in various sizes and also different types of equipment. The quick change from one implement to another was demonstrated, as was done with both the John Deere and the Ferguson. The Super C tractor and equipment appeared to find most favor among the observers due to the fact that it is a medium sized tractor well suited to the types of farms generally represented.

The International Harvester dealer completed his demonstration at 2:30 which placed show one hour ahead of schedule. The crowd moved over to the contest area where the Junior Tractor Operator's contests were held. Dalton Bunch was winner in the white contest and Willie Bonner was winner in the colored boys' contest.

At 3:30 the second attendance prize was awarded and the day's program was officially closed. Many of the crowd moved back over to the farm equipment area where they could make further observation of the types of equipment that had been demonstrated, and talk with the dealers about the ones they were most interested in.

Teen Age Christmas Dance December 17

(Continued From Page One)

tremendous help and the directors would like to make known to the Teen Agers the people who are standing behind the ones they see normally at the club.

Those giving checks were: The Edenton PTA, the Rotary Club, Edenton Woman's Club, VFW Club and J. R. Dulaney. In addition birthday boxes are circulated in most of the sponsoring clubs.

As often as possible cakes and candy are sold at the club Friday and Saturday nights. This is always donated and, of course, a profit is realized. So far this year the following people have sent cakes and candy: Mrs. Helen Hughes, Mrs. Robert Boyce, Mrs. James Cozzens, Mrs. Horace White, Mrs. Worth Spencer, Mrs. Tom Cross, Jr., Mrs. Guy Hobbs, Mrs. Elizabeth Ashley, Mrs. Jim Partin, Mrs. C. F. Russell and Mrs. Erie Haste.

The cakes are usually used in a cake walk, which creates a great deal of enjoyment on the part of the children as the winner usually tries to serve the entire group with one cake.

The snack bar will not be open for the Christmas dance, but there will be plenty of refreshments which will be served free for this occasion.

An invitation is extended to adults

USED CARS

READY TO GO

(GUARANTEED)

- 1952 Chevrolet, 2-door
- 1952 Pontiac, 4-door
- 1952 Plymouth, 2-door
- 1951 Chevrolet, 4-door
- 1950 Chevrolet, 2-door
- 1950 Dodge, 4-door
- 1950 Mercury, 4-door
- 1949 Chevrolet, 2-door
- 1948 Chevrolet, 2-door

MANY OTHER MODELS TO CHOOSE FROM

MOST OF THESE HAVE RADIO AND HEATER

B. B. H. Motor Co.

"Your Friendly Chevrolet Dealer"
N. BROAD AND OAKUM STS.
EDENTON, N. C.

EVERY CALL SAYS:
MAKE MINE A
LANE CEDAR
CHEST!

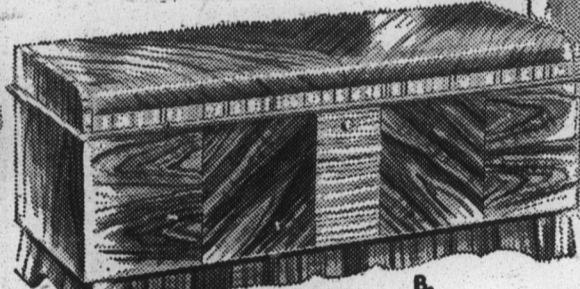


CHOOSE HER
LANE
CEDAR CHEST

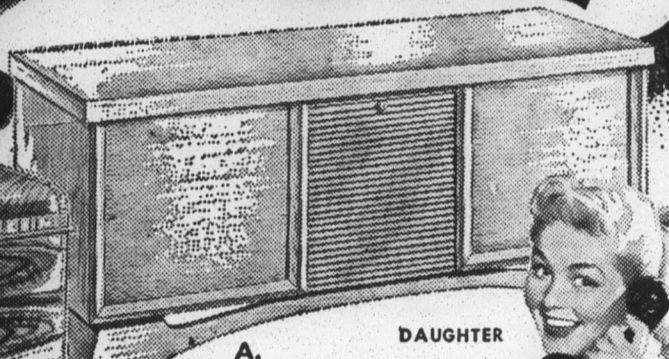
NOW!



WIFE



B.



A.

DAUGHTER



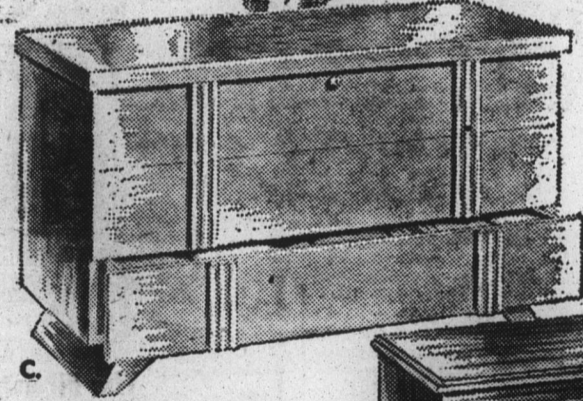
SWEETHEART

THE GIFT THAT'S SO PRACTICAL and SENTIMENTAL, TOO!

Here's the happy solution to your gift problem for HER! A stunning Lane Cedar Chest will bring her an unforgettable thrill Christmas morning. And in Lane's spacious red cedar interior, she'll find guaranteed moth protection for her dearest feminine treasures—to be kept ever safe from moths and dust, clean and fresh as new!

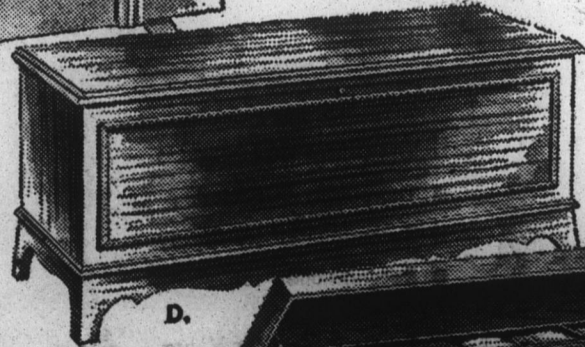
MANY CHESTS AS LOW AS

\$49.95



AS ADVERTISED IN LIFE

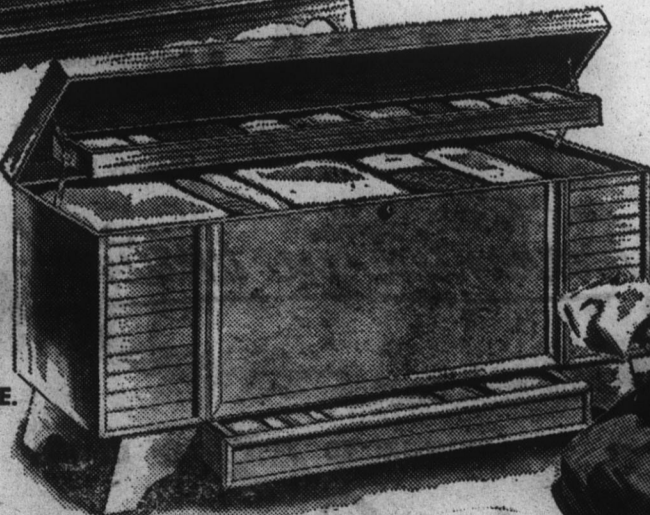
- A. Beautiful modern chest in gleaming blond oak. Tray rises automatically with lid. Same chest available in popular seafoam mahogany. In either finish, only \$59.95
- B. Lots of storage space in this big streamlined modern chest. Finished in walnut, has self-rising tray. \$49.95
- C. Popular console-type chest in smartest modern styling. Has big base drawer. In blond oak as shown, also in seafoam mahogany or in cordova mahogany. \$79.95
- D. Graceful design of 18th Century, gleaming mahogany finish. Equipped with self-rising tray. Unusual value at \$59.95
- E. Exciting new seafoam mahogany finish on this stunning modern chest with base drawer, self-rising tray. \$69.95



D.



MOTHER



E.

One garment saved from moths PAYS FOR A LANE!

Quinn Furniture Company

EDENTON, NORTH CAROLINA

SEND
Spedic

PEANUTS
For Christmas

Delicious, Attractively Packaged
Cards Enclosed

No Trouble To You!

A PLEASURE TO GIVE! A JOY TO RECEIVE!

Packages From \$1.40

Call 450 And Give Us Your List

SPEDIC FOOD PRODUCTS, INC.

EDENTON, N. C.