

HOME ORCHARD SUGGESTIONS

The Orient Pear lives, thrives and bears a wonderful crop amid blighted Keifers and Bartletts, says C. W. Overman, County Agent. This statement is based upon observations made by Extension Horticulturist John H. Harris.

The new Orient pear is highly blight resistant. It is a thrifty grower and produces a delicious fruit for eating raw and cooking. It requires a neighbor such as the Keifer for best pollination. With good plination it is a heavy producer.

The County Agents are assisting people in making up club orders for fruit trees and plants. By ordering in larger quantities you can save on the cost. The agents know the varieties best suited to this area and will help you select varieties and plan your orchard—you can purchase your trees where you desire. From now until February is the ideal season to set out the home orchard, Mr. Overman says. Strawberries and dewberries should be set in February and March. But—don't set trees and plants unless

you expect to take care of them. Now is the time to prune. Grape vines especially should be pruned in November and December to avoid bleeding.

Grapes bear on new shoots which come from the previous season's wood. This means that we need to get rid of a large portion of the unproductive old wood each year. For bunch grapes, select from four to six fruiting canes of the newest growth and tie them to the wires, cut the new branches back to eight or ten buds. Scuppernong vines should have the dead wood removed. Six to eight of the younger vines should be left and all other wood cut out. Then cut back the branches on the vines to eight or ten buds.

Apples and pears should be thinned out, not cut back. Peaches should be cut back leaving about 6 to 8 inches of the new growth. The center should be left open except for slender fruit stems which also shade the trunk. For further information call on your county agents or vocational teacher.

N. C. Cotton Crop For 1953 Estimated At 453,000 Bales Estimate Is Four Per Cent Above Crop In 1952

North Carolina's cotton crop for 1953 is estimated at 453,000 bales (500-pounds gross weight). The State-Federal Crop Reporting Service announces that the 1953 acreage harvested in North Carolina would amount to 775,000 acres. This is 4

per cent above the 1952 harvested acreage and is 2 per cent higher than the earlier estimate made by the Service.

Lint yield per acre turnout is estimated at 280 pounds—10 pounds lower than earlier seasonal forecasts. This is 86 pounds or 24 per cent below the 1952 cotton yield and 19 per cent below the ten-year average yield. The smaller yield in 1953 is attributed both to heavy weevil infestation and dry weather. Total production of 453,000 bales estimated compares with 569,000 bales for 1952 and 522,000 bales for the 1942-51 average crop.

As of December 1 the crop was practically all harvested and ginned. Weather conditions for harvest have been ideal and the crop has been harvested more rapidly in 1953 than for any year on record.

The nation's 1953 cotton crop is

placed at 16,487,000 bales (500-pounds gross weight)—3.6 per cent above the 15,139,000 bales produced last year and 34.6 per cent above the ten-year (1941-52) average crop of 12,216,000 bales.

Whoe'er amidst the sons Of reason, valor, liberty and virtue Displays distinguished merit, is a nobleman Of nature's own creating. —Thomson

Weekly Devotional Column

By JAMES MACKENZIE

Prayer is an instrument that God has placed in the hands of His people, not in order that we might get what we want, but that, through it, God may get what He wants. "Prayer," a someone has said, "is not conquering God's reluctance, but laying hold of His highest willingness." We should pray, not that we might persuade God to go along with our own petty plans and desires, but that He will bring us to the place where He may work out His sovereign purpose more effectively in us, and through us.

As Clarence Macartney puts it: "There are answers beyond our answers—that is, beyond what seems to us an answer. David lay on the ground all night and prayed for the recovery of that child of love and sin; but the prayer, as he asked it, was not answered. The child died, but David did not cease to pray and to believe in prayer. He comforted himself and said of the child, 'I shall go to him, but he shall not return to me' (I Samuel 12:23).

Paul prayed earnestly, if ever man did. He besought the Lord three times that his grievous and painful thorn in the flesh be taken from him; but his prayer, in that form, was not granted. The thorn remained to pierce and harass him to the end of his days. And yet at the same time God answered him when he prayed, and this was his answer, "My Grace is sufficient for thee" (II Corinthians 12:9). Paul found that to be the answer to his unanswered prayer.

The value of prayer isn't always in the effect it has upon God; more often it is in the effect it has upon the person praying.

Sometimes prayer is a road to rise, A mountain path leading toward the skies.

It isn't a shibboleth, creed or code, Nor always a pack horse to carry your load;

And often the reward to the person who tries,

Is not in the goal, but the exercise.

CHRISTIAN CHURCH SERVICES

Services at the First Christian Church have been announced as follows by the pastor—the Rev. E. C. Alexander:

Bible School, Sunday morning at 10 o'clock; morning service at 11 o'clock; evening service at 7:30 o'clock. Wednesday Evening Bible Class meets at 7:30 o'clock. Everyone is welcome to young people's meeting at 6:30 P. M., all services.

FOR SALE

Building and Woodwork Equipment

FORMERLY OPERATED BY J. N. ELLIOTT

115 East Church Street

REASON FOR SELLING TO SETTLE ESTATE

— APPLY TO —

Mrs. J. N. Elliott

Edenton, N. C.

ON DISPLAY FRIDAY

It's Brimming with Beauty!



The new 1954 Chevrolet Bel Air 4-door sedan. With 3 great series, Chevrolet offers the most beautiful choice of models in its field. Powerglide automatic transmission now available on all models, optional at extra cost.

New 1954 Chevrolet

Come see the most beautiful, most powerful Chevrolet ever built . . . the new car that combines great new performance with money-saving gas mileage!

In every way, Chevrolet now brings you even more of the things you want.

More beauty with brilliant new styling in Body by Fisher and bright new color harmonies outside and inside the car.

More power and finer performance with new high-compression engine power in all models.

More comforts and conveniences including the richest new interiors in Chevrolet history and such new features as Power Brakes and

Automatic, Electric Window and Seat Controls. And, thanks to advanced Chevrolet engineering, all this with new economy, too.

The fact is, you'll find that no other car offers so many things you want at such low cost. That means the low first cost of the lowest-priced line in its field. And it means money-saving economy of operation and upkeep, as well.

Stop in and take a good look at the best-looking Chevrolet you ever saw!

First in the Low-Price Field

with POWER BRAKES, AUTOMATIC WINDOW and SEAT CONTROLS



Power brakes for easier stops

Now Chevrolet brings you Power Brakes to make stopping wonderfully easy and convenient. Optional on Powerglide models at extra cost.



New, automatic window and seat controls

The touch of a button adjusts front seat and windows. Optional on Bel Air and "Two-Ten" models at extra cost.

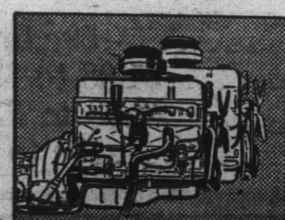


New styling that will stay new

There's a new, lower, smarter look about this new Chevrolet. All around the car, you'll see new styling that brings you Fisher Body at its beautiful best.

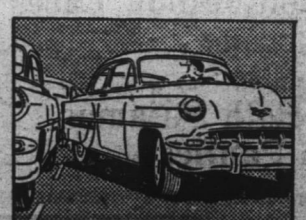
New interior richness

Fine new upholstery fabrics with a more liberal use of beautiful, durable vinyl trim. New color treatments in harmony with the brilliant new exterior colors.



Thrifty new power in all models

Now, in Powerglide models, is the more powerful "Blue-Flame 125" engine. Gearshift models offer the more powerful "Blue-Flame 115."



New, lower price on power steering

Chevrolet Power Steering now reduced in price! It does 80% of the work to give you easy, sure control. Optional at extra cost on all models.

SYMBOL OF SAVINGS



EMBLEM OF EXCELLENCE

B. B. H. MOTOR COMPANY

"YOUR FRIENDLY CHEVROLET DEALER"

N. Broad and Oakum Streets

Edenton, N. C.

DEPENDABILITY



KINDLY, philosophical, mighty of sinew, the Village Blacksmith was dependability incarnate! He was typical of a slower-moving age . . . but the auto will never erase the memory of his honest capability.

Time will never erase the beautiful memory of a service conducted by our skilled staff. Correct appointments and a sincere desire to be of helpful service have won us our reputation for dependability.



WILLIFORD
Funeral Home
PHONE 231 • EDENTON, N. C.
MEMBER OF THE ALBEMARLE MUTUAL BURIAL ASSOCIATION