

What Do You Know About Department Of Conservation And Development?

BY WADE LUCAS

What is the North Carolina Department of Conservation and Development? What responsibility is it charged with under the laws of the States? What comprises it and how is it operated?

These questions are being asked in various sections of North Carolina as a result of the stepped up activities of the department under the personal direction of Governor William B. Umstead and since Ben E. Douglas, former Charlotte mayor and businessman, became its director last July 20 by appointment of the State's chief executive.

In naming Douglas to direct the far-flung activities of the department, Governor Umstead also moved to strengthen the membership of the State Board of Conservation and Development, which determines policies of the Department of Conservation and Development. To the 15-member board the Governor named some of the State's best known business men.

Adding further emphasis to what he had said in his inaugural address last January when he declared "The words 'Conservation and Development' include many things so important to the development of North Carolina," Governor Umstead took over active chairmanship of the State Board of Conservation and Development at the new board's organizational meeting in Morehead City last July.

At Governor Umstead's suggestion the 1953 General Assembly had terminated the terms of all members of the State Board of Conservation and Development as of last May 1. Shortly before the board's scheduled meeting at Morehead City, Governor Umstead named the following as mem-

bers of the new C&D board:

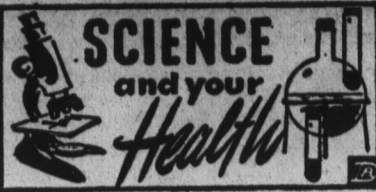
Miles J. Smith, Salisbury, first vice chairman, Walter J. Damtoft, Canton, second vice chairman, Charles S. Allen, Durham, W. B. Austin, Jefferson, Carl Buchan, Jr., North Wilkesboro, Scroop W. Enloe, Jr., Spruce Pine, Robert M. Hanes, Winston-Salem, Leo H. Harvey, Kinston, Charles H. Jenkins, Ahoskie, Amos Kearns, High Point, Cecil Morris, Atlantic, Hugh M. Morton, Wilmington, Henry Rankin, Fayetteville, Eric W. Rodgers, Scotland Neck, and T. Max Watson, Spindale.

These men serve as member of the board's standing committees, which fix policies for carrying out by departmental divisions subject to full action by the Board of Conservation and Development. They were appointed for terms of from two to six years.

Established in 1925 by Act of the North Carolina General Assembly of 1925, the Department of Conservation and Development is unique in comparison with that of agencies engaged in conservation and development activities in other states.

Whereas in other states conservation and development work is generally carried on by numerous organizations, it is distinctly different in North Carolina. Here such work is carried on on a State-wide basis under one organization, namely: The Department of Conservation and Development.

When it was created in 1925 during the administration of Governor A. W. McLean of Lumberton, the department originally brought together the then separate Geologic and Economic Survey, the Forest and Parks administra-



CONQUERING DIPHTHERIA by Science Features

Once the most terrible of all infectious diseases that menace children, diphtheria is being vanquished by advances in medical science. Where cases do arise, effective weapons are on hand to combat them.

For example, Michigan had 25 deaths from diphtheria for each 100,000 population in 1920—a time when good antitoxins and vaccines were available. Today, that same state has less than one death caused by diphtheria for each 100,000 people.

Over 80 per cent of all diphtheria cases arise in children below ten years of age. The disease is spread by children or adults who have the disease, either with symptoms or without them. The latter person is called a "carrier."

Doctors recommend that all children be inoculated against diphtheria before the end of the first year. Because wide-scale immunization has become common in recent years, there is a tendency for the disease to appear with greater frequency in older children who have neglected re-inoculation.

Recent scientific reports show that excellent results are obtained when the antitoxin is given together with an antibiotic. In one study six patients with acute diphtheria treated with terramycin and antitoxin showed no signs of the disease after an average of 2.3 days treatment.

Antibiotics also have been used to eliminate the diphtheria germs from carriers of the disease.

tion, and the Commercial Fisheries Commission. A division for industrial development, now the Division of Commerce and Industry, was later created and merged with other units of the newly organized State agency. In 1937 the State Advertising Division was created and also made a part of the department.

Today the department is comprised of seven divisions, namely: Commerce and Industry, Advertising, Forestry, Parks and Recreation, Commercial Fisheries, Water Resources, Inlets and Coastal Waterways, and Mineral Resources.

Policies of the department are determined by the Governor and 15 members of the State Board of Conservation and Development. Charged with carrying them out is Douglas, who gained quite a reputation in his home city of Charlotte as a builder and developer before he was requested by the Governor to become director of the C&D Department. Douglas as director is also charged with overall supervision of the department's seven divisions.

Prescribed Duties

As prescribed in General Statutes 113-3 and 113-15, the duties of the Department of Conservation and Development include action and aid:

1. In the promotion of the conservation and development of the natural resources of the State.
2. In promoting the development of commerce and industry.
3. In promoting a more profitable use of lands, forests and waters.
4. In carrying into effect a systematic plan for the nationwide advertising of North Carolina, properly presenting, by the use of any suitable advertising media, the true facts concerning North Carolina and all its resources.
5. In coordinating existing scientific investigations and other related agencies in formulating and promoting sound policies of conservation and development; and
6. To collect and classify the facts derived from such investigations and

(Continued on Page Eight)

Now Is Time To Check Yuletide Ornaments

Mamie Whisnant, State College extension specialist in home management, says that now is the time to check your Christmas lighting and decorations for safety. Test last year's bulbs and see how many of them can be used again this year.

We like to think of the Christmas season as one of joy and happiness, but some of the most tragic home accidents have happened during the yuletide season. Both fires and falls take heavy tolls during the holiday season.

Miss Whisnant advises that you check and recheck your Christmas lighting fixtures, wires and plugs. A frayed wire or a damaged socket can be a source of grief.

Miss Whisnant cautions, too, that in **ENJOY YOUR FOOD AND DIET AT SAME TIME**

If you're on a diet there is no reason why you cannot eat the same food as other members of the family. Look for tasty, low-calorie breakfast, lunch and dinner menus designed so anyone can shed pounds while enjoying the same meals as others in the household.

This helpful feature appears in the January 3rd issue of

THE AMERICAN WEEKLY
Magazine in Colorgrature with The **BALTIMORE SUNDAY AMERICAN**
Order From Your Local Newsdealer

SOUTHERN COMFORT



100 PROOF LIQUEUR

SOUTHERN COMFORT CORP.
ST. LOUIS 3, MISSOURI

FIFTH \$5.15

PINT \$3.20

placing your Christmas tree this year, to place it close enough to a wall socket so that you do not have to use extension cords. Some extension cords are not designed to carry an extra load. Cords placed under a rug are hazardous—they may cause fire—and those lying in the open may snare someone's foot.

Placing your Christmas tree in a pail of damp sand will help to keep the tree fresh and green throughout the Christmas season and will reduce chances for fire from hot bulbs. Whenever you leave the room in which the tree is placed, turn out the lights. The tiny Christmas lights heat quickly and may ignite a dry tree or some of the other decorations. Be especially careful this Christmas season and be certain that yours is truly a merry one.

A SERVICE FOR YOU FROM YOUR Farm Bureau Agent

To help you secure automobile liability insurance quickly... I will be at the location listed below.

REMEMBER... under North Carolina's new Safety Responsibility Law, you may lose your right to drive without the proper insurance.

FARM BUREAU OFFERS THESE IMPORTANT FEATURES:

- ☆ Savings up to 25%.
- ☆ On-the-spot policy issuance.
- ☆ Nationwide, 24-hour claim service.
- ☆ Second largest mutual insurer of autos in America.

Lonnie Harrell

ROUTE 3 — BOX 106
Phone Rocky Hook 114 Anytime

Parker Helms

204 BANK OF EDENTON BUILDING
9:00 to 12:00 A. M., and 1:00 to 5:00 P. M.
Or Call Office 175-W or Home 565-J

Farm Bureau Mutual Automobile Insurance Company

HOME OFFICE: COLUMBUS, OHIO

STOP

BIG MID-WINTER FUEL BILLS



Coastland Oil Co.

Distributors of Gulf Products

Phone 699

NOTICE!

The Singer Sewing Center of Elizabeth City will be open, by appointment, for couples or persons desiring to shop for Christmas purchases. Our large stock includes Singer Sewing Machines, Vacuum Cleaners, Notions, etc.

"EVERYTHING FOR THE WOMAN WHO SEWS"

Toll free calls for people in Edenton area. Call Operator and ask for Enterprise 600.

OPEN NIGHTS UNTIL CHRISTMAS

Singer Sewing Center

605 East Main Street Phone 4306
ELIZABETH CITY, N. C.

MERRY CHRISTMAS
AND MANY, MANY THANKS

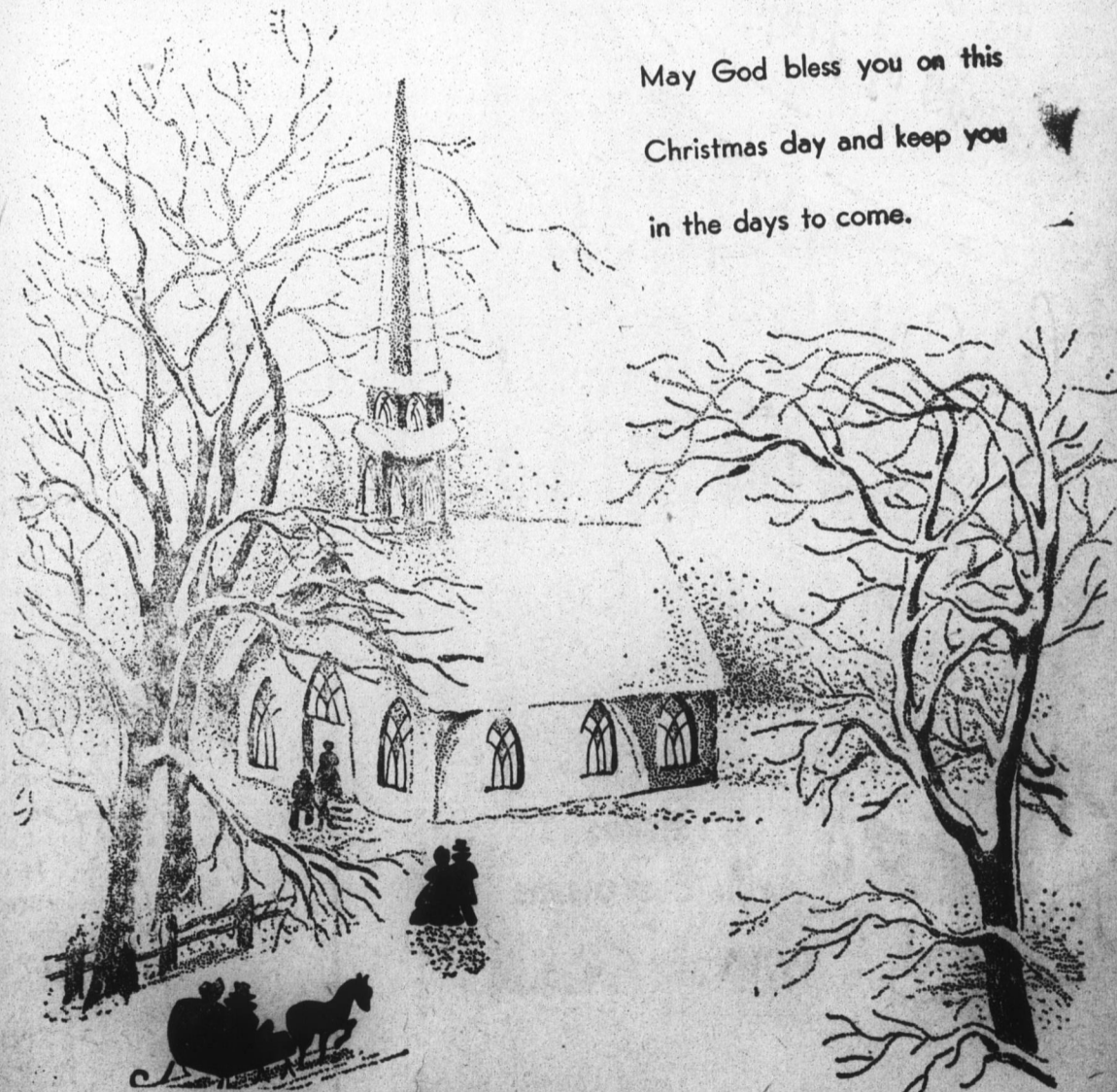
BUNCH'S GARAGE

Phone 196-J

Edenton

A CHRISTMAS PRAYER

May God bless you on this Christmas day and keep you in the days to come.



Cuthrell's Department Store