

Postmaster General Arthur Summerfield Comments Upon Nation's Mail Service

Rural America no longer is the "forgotten zone" of mail delivery according to Postmaster General Arthur E. Summerfield.

Millions of citizens now are getting better mail service because of a new emphasis on rural free delivery, Mr. Summerfield said, pointing out that the Post Office Department is modernizing service everywhere to deliver the mail faster and at less cost.

In a report on operation for the past year and plans for 1954, the Postmaster General declared:

"Just a year ago, a new team of executives took over the management of the Post Office Department's \$10,000,000,000 a year business with a directive from President Eisenhower to provide better mail service while reducing costs and the postal deficit.

"We are undertaking one of the largest reorganization projects ever made in the United States, and the dangerous trends towards poor mail service, poor employe morale and ever-mounting deficits have been reversed.

"For example, the Department closed about 600 out-moded fourth-class post offices and substituted modern rural free delivery service.

"We intend to proceed with this policy of improving rural delivery. It is badly needed, not only by agricultural families who deserve better service but also in the rapidly growing suburban communities around our cities. More and more people are moving into these areas and they must have modern, fast mail delivery six days a week."

One of the big tasks facing the new postal administration was cutting the deficit to help balance the national budget and put the Post Office Department on a more nearly break-even basis, Mr. Summerfield pointed out.

"Already we have reduced the estimated postal deficit for the current fiscal year to about \$440,000,000. That represents a reduction of the deficit by about one million dollars every working day," he said. "But we still are running behind. In the eight years since World War II, the postal deficit totaled \$3,800,000,000. The interest alone on this huge debt costs the American taxpayers over \$100,000,000 a year.

"We believe that Congress should recognize that economies already made and to be made by the new management of the Post Office Department cannot by themselves bring the postal deficit into balance.

"We have asked the Congress to raise the cost of out-of-town letters by one penny from three cents to four cents. That rate hasn't been raised in twenty-one years but meanwhile the cost of operating the Postal Establishment has doubled in that time.

"We have asked Congress for a modest raise in second-class mail rates for newspapers, magazines and periodicals to bring in added revenues equal to less than nine per cent of the present loss on this class of mail.

"Second-class mail rates are lower today than they were in 1925; in fact our revenues at present rates are barely sufficient to cover our bills for transporting second-class mail, with nothing left over for the enormous

expense in handling, distribution and delivery.

"We have also asked the Congress for an increase in third-class mail—comprising advertising matter—circulars, and packages up to 8 ounces. We lost 191 million dollars on this class of mail in 1952.

"Our taxpayer should know the size and extent of our losses on both second and third-class mail.

"Since 1936 through the fiscal year 1952 the losses on second-class mail with magazines comprising 68 per cent of the total, were two billion one hundred and twenty seven million dollars.

"In contrast we are told, published statements indicate this sum is over twice the realized losses of one billion forty-nine million dollars in the price support program given to the farmers of the country by the Commodity Credit Corporation.

"We believe it unconscionable that this postal deficit should be passed on to succeeding generations to pay. Instead we believe the cost of operating the postal service should be distributed fairly among the actual users of the mails."

Postmaster General Summerfield pointed to these significant improvements in service this past year:

Later pick-ups from mail boxes in most cities speed deliveries by a full day.

Air transportation is being used as an experiment in speeding first-class mail and is working out very well at no increased cost.

Merit is the primary criterion for promotion of postal employees to supervisory positions.

Performance standards have been introduced and a savings of \$10,000,000 a year already has been recorded in large post offices.

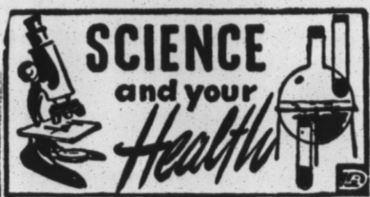
Longer hours of post office window service are in effect in 200 larger cities.

Regional offices are being established to decentralize management and provide closer supervision over operations.

Administration has been reorganized and simplified to eliminate duplicate functions and save money.

"Much progress has been made in this first year under the new management," Mr. Summerfield said. "Much more can and will be done in the days ahead to assure better mail service.

"Dramatic proof that our citizens are getting better mail service at lower cost is evidenced by the recent holiday mail season when the Department handled more Christmas mail



SCIENCE and your Health

CAUTION ON HOME PAINTING by Science Features
Planning to do any painting in your home? If you are, and if there are children around, doctors advise that you be sure to use a paint which does not contain lead chromate in the pigment.

The reason for this is simple. Young children, as every parent knows, have the habit of chewing on whatever comes to hand—the rail of a crib, a window sill, even bits of painted plaster which fall from old walls.

If this paint contains lead chromate—a rather common ingredient of the pigment, especially in chrome yellow, orange and green colors—enough may be swallowed by the child to cause lead poisoning. In the first six months of this year 15 cases of lead poisoning were reported in New York City alone, 11 among children.

Most manufacturers of children's furniture take care to use paint that does not contain lead chromate. This precaution may be nullified, however, if the parents repaint furniture or toys which are used by the child with a lead base paint.

So if you're planning to repaint in the home, make sure the label states that it contains safe levels of lead chromate—one part lead to 200,000 parts of pigment.

than ever before at lower operating costs. It did so efficiently and promptly so that the Christmas mail was delivered by Christmas Day."



GARDEN TIME

ROBERT SCHMIDT
N. C. STATE COLLEGE

The time is getting short for transplanting fruit trees and shrubs and rose bushes, especially in the eastern part of the state. All transplanting of bare rooted plants should be done before the buds on those plants begin to swell and become active. It doesn't matter so much about plants with a ball of earth attached to the roots—that is, balled and burlapped. Also, trees and shrubs set at this time of the year may require additional watering during the early growing season if rainfall is deficient or the weather is hot.

Dig a hole wide enough to accommodate the entire root system without crowding and deep enough so the plant may be set as deep or slightly deeper.

KIDNEYS MUST REMOVE EXCESS WASTE

When kidney function slows down, many folks complain of nagging backache, loss of pep and energy, headaches and dizziness. Don't suffer longer with these discomforts if reduced kidney function is getting you down—due to such common causes as stress and strain, over-exertion or exposure to cold. Minor bladder irritations due to cold, dampness or wrong diet may cause getting up nights or frequent passages.

Don't neglect your kidneys if these conditions bother you. Try Doan's Pills—a mild diuretic. Used successfully by millions for over 50 years. While often otherwise caused, it's amazing how many times Doan's give happy relief from these discomforts—help the 15 miles of kidney tubes and filters flush out waste. Get Doan's Pills today!

DOAN'S PILLS

MADAM REESE

American Palmist and Psychic Medium

Tells you any and everything you wish to know without asking any questions, gives you names of enemies and friends, gives true and never failing advice on all affairs of life. If worried, troubled or in doubt, consult this Psychic Reader at once. She can and will help you. Consult her on business, love, marriage, wills, deeds, mortgages, lost and stolen articles, and speculations of all kinds. You Must Be Satisfied or No Charge.

Don't be discouraged if others have failed to help you. She does what others claim to do. One visit will convince you this Medium and Divine Healer is superior to any reader you have consulted.

TELLS YOU LUCKY DAYS AND NUMBERS. Helps You to Overcome Bad Luck and Evil Influences.

Private and Confidential Readings Daily and Sunday for both White and Colored—Hours: 9:00 A. M. to 9:00 P. M.
NOT TO BE CLASSIFIED AS GYPSIES.
LOOK FOR HAND SIGN. Permanently located in private office. No House to House Calls—No Mail Answered—Call In Person South on U. S. Highway 17 at the Woodville Airport—Half Way Between Elizabeth City and Hertford, N. C.

nure in the hole which might damage the roots. Any fertilizer should be applied on top and stirred into the soil about the time that growth starts in the spring.

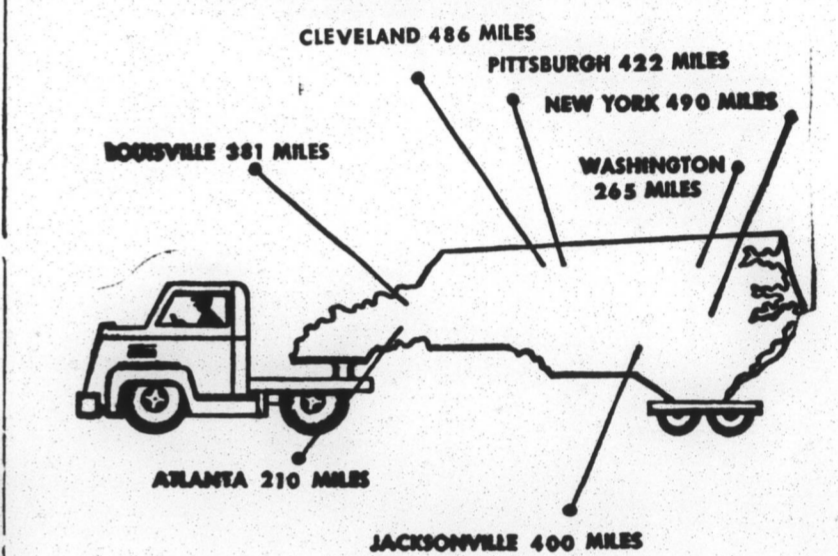
Pruning at transplanting time will depend on the amount of root surface that has been lost in the operation—that is, the greater the loss of roots, the more severely must the top be pruned in order to secure a "balance" between roots and top. Fruit trees and deciduous shrubs are generally pruned quite severely.

If you intend to order your trees and shrubs from some out-of-town nursery, make your selections and send the order off at once—it takes time to get them. And, as I have suggested, time is getting short.

Look to be treated by others as you have treated others. —Publius Syrus.

NORTH CAROLINA

the "suburb" of the world's greatest market!



80 million people and 7 of America's 12 largest cities are located within 500 miles of North Carolina's border—less than a day's haul by truck.

People and industry like "suburbs" today—with more "elbow-room" to grow, live and play, when transportation to and from larger, crowded areas is quick, sure and economical.

If your community is interested in new industry write or telephone Ben E. Douglas, Director, N. C. Department of Conservation and Development, Raleigh, N. C. The progress of North Carolina's organized trucking industry, and how it moves raw and finished products within our state and to or from this great area-market, is important to industry—old and new. We'll supply the facts about it.

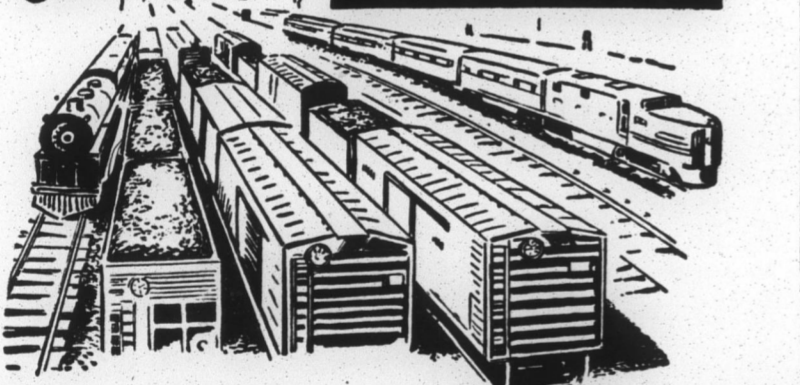
NORTH CAROLINA MOTOR CARRIERS ASSOCIATION, INC.
"Safety is no accident"

Quick! Break Up CHEST COLDS'

painful local CONGESTION
Rub on highly medicated, concentrated Musterole. It instantly starts to relieve coughs, sore throat and helps break up local congestion. Musterole creates a wonderful protective warmth on chest, throat and back!



NORTH CAROLINA UNLIMITED



N. C. Railroads Valued at \$150 Million!

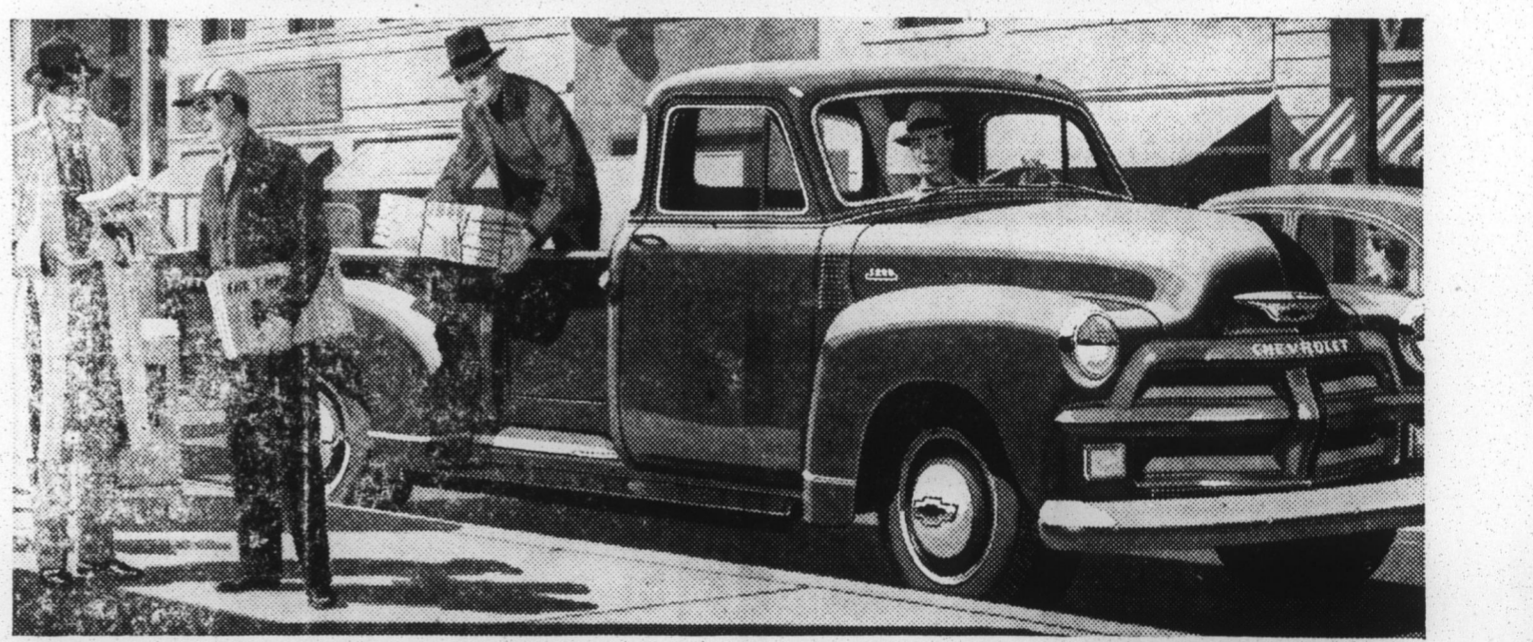
The Southern, Atlantic Coast Line and Seaboard, in that order, are the Big 3 in terms of property valuation among the 30 different railroads operating in our state. This valuable network of progressive railroads serves all Tarheels and, for years has meant much in making North Carolina a better place in which to work, play and live.

Another contribution to more pleasant living for North Carolinians is the brewing industry's self-regulation program where brewers, wholesalers and retailers—in counties where malt beverages are permitted under State control—cooperate to maintain wholesome conditions for the legal sale of beer and ale.

North Carolina Division UNITED STATES BREWERS FOUNDATION, INC.



Now! No-shift driving - EVEN ON 1-TON MODELS!



NEW CHEVROLET TRUCKS FOR '54

Completely new—the most powerful, finest performing, best-looking Advance-Design trucks ever built! And you can have new automatic transmission* on 1/2-, 3/4- and 1-ton models!

- New 1954 Chevrolet trucks offer you the last word in no-shift truck driving ease. With new truck Hydra-Matic Transmission,* you can make door-to-door deliveries... drive in heavy traffic or on the open highway without shifting gears or operating a clutch. Come in and see all these brand-new advantages.
- NEW ENGINE POWER. Bigger, brawnier "Thrifty-master 235" engine. Rugged, durable "Loadmaster 235" engine. Mighty all-new "Jobmaster 261" engine.*
- NEW COMFORTMASTER CAB. Engineered for greater comfort, convenience and safety. New one-piece curved windshield. New Ride Control Seat* offers extra comfort for drivers.
- NEW, BIGGER LOAD SPACE. New pickup, stake and platform bodies are roomier.
- NEW CHASSIS RUGGEDNESS. Extra strength and stamina in all models!
- NEW ADVANCE-DESIGN STYLING. Handsome new styling reflects new power and ruggedness.

Most Trustworthy Trucks On Any Job!

ADVANCE-DESIGN TRUCKS

B. B. H. MOTOR COMPANY

"YOUR FRIENDLY CHEVROLET DEALER"

N. Broad and Oakum Streets Edenton, N. C.