

Joyce Snell Bride Of Bennie Twine

Ceremony Solemnized In Creswell Church Sunday Afternoon

An afternoon ceremony at Creswell March 21st in the Philippi Church of Christ united in marriage Miss Joyce Snell and Bennie Twine with the Rev. Russell Smith officiating. The double ring ceremony was used.

The bride is the daughter of Mrs. James Snell of Creswell and the late Mr. Snell. The bridegroom is the son of Mr. and Mrs. J. M. Twine of Windsor.

Wedding music was presented by Ronnie Pritchett of Creswell, pianist, and Mrs. Frank Woolard of Creswell, vocalist. Mrs. Woolard sang "Oh Promise Me," and "With These Hands." As the benediction she sang "The Lord's Prayer."

Given in marriage by her brother, Jimmie Snell of Hyattsville, Md., the bride wore a gown of white net designed with a softly shirred bodice and very full gathered floor length skirt. A ruffled band of Venise lace was set on at the hipline and also bordered the edge of a flat bertha cape collar which covered the shoulders. Her headdress was a shaped bonnet of starched lace, edged with miniature orange blossoms and draped in shoulder length imported illusion veiling. She carried a cascade bouquet of white carnations, centered with a white orchid.

The maid of honor was Miss Edna Snell, sister of the bride. She wore a floor length gown of mint green nylon tulle over taffeta with a pleated fan shaped neckline, fitted bodice and bouffant skirt. She wore a half-hat of softly shirred tulle edged with miniature pink rosebuds, and carried an old fashioned nosegay of pink carnations.

The bridesmaids were Mrs. Louis Tavarozzo of Hyattsville, Md., sister of the bride; Mrs. Pat Brickhouse of Norfolk, Va., sister of the bride; Mrs. Mille Smith of Creswell and Mrs. Johnnie Twine of South Norfolk, sister of the bridegroom. They wore pink floor length gowns identical to the attendant and carried nosegays of pink carnations.

Raymond Mansfield of Edenton, was best man and the ushers were Louis Tavarozzo of Hyattsville, Md.; Pat Brickhouse of Norfolk; Meredith White of Windsor and Rudolph Dail of Edenton.

The mother of the bride wore a mauve crepe dress with white accessories and a corsage of carnations. The bridegroom's mother was attired in a lilac crepe dress with white accessories and a corsage of carnations. Following the ceremony the couple greeted the guests in the vestibule of the church.

For travelling the bride wore a costume suit of light blue with pink flowered hat and navy accessories. Her corsage was a white orchid lifted from her wedding bouquet.

The bride was previously employed at Campen's Jewelers of Edenton and the bridegroom is employed at the Twentieth Century Barber Shop in Edenton. After a short wedding trip the couple will reside on North Broad Street, Edenton.

Edenton Jr.-Sr. Menu

Menus at the Edenton Junior-Senior High School lunch room for the week beginning March 29 will be as follows:

Monday—Vegetable soup, spiced ham sandwiches, carrots, crackers, bread, milk, devil's food cake.

Tuesday—Sliced luncheon meat, mashed potatoes, string beans, cheese biscuits, butter, milk, jello.

Wednesday—Beef and gravy, mashed potatoes, apple sauce, carrots, rolls, butter, milk, cookies.

Thursday—Weiners, French fries, cole slaw, radishes, weiner rolls, milk, peach pie.

Friday—Tuna salad on lettuce, pickles, green limas, crackers, bread, butter, milk, cup cakes.



SOUTHERN COMFORT

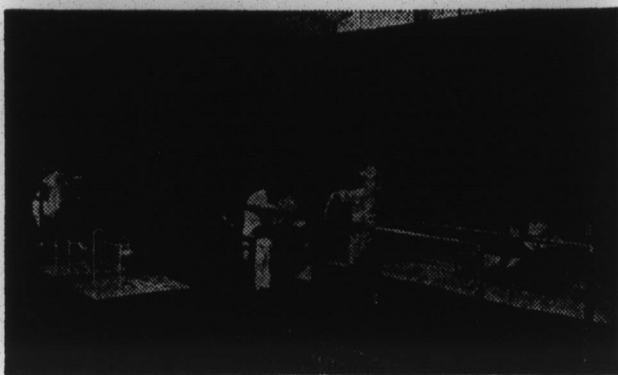
FIFTH 5

PINT \$3.20

100 PROOF LIQUEUR

SOUTHERN COMFORT CORP. ST. LOUIS 1, MISSOURI

EASTER SEAL FUNDS AT WORK



Above is pictured two crippled children gradually being restored to normal use of their bodies as the result of treatment made possible by funds received through the sale of Easter Seals. Buy Easter Seals and thus help to cure a crippled child.

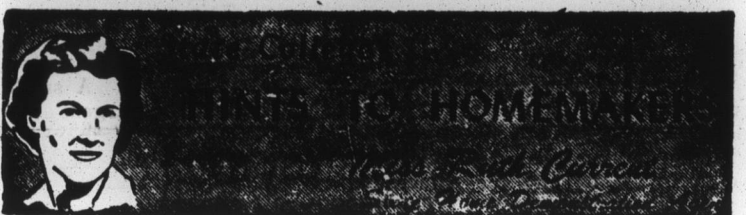


Table Linens—Table linens that are drab or streaked from bleaching can be made pretty again by tinting to newness. Perhaps you can use bands of bias tape or rick-rack in design to give that ready-to-be-discarded table cloth and napkins another 12 months of use.

Percale sheets, the lovely colored ones or white, can be most effectively used as table cloths. One sheet will make a complete setting provided you cut wisely.

Lace—coarse Hamburg—is mighty pretty as a trim or you might prefer to have the sides and ends plain. The hems should be put in by hand if you decide on a plain cloth.

Percale-sheet tablecloths are pretty indoors or out. They are inexpensive—most every homemaker can have one for her party and dress-up affairs. Don't get thin, slazy sheets. Get the best quality—you'll still have a cheap, but beautiful cloth.

A silence cloth of some thick, heavy material will make your table look much prettier. A silence cloth should be used to protect your polished table—too many hot-dish mats make a table look cluttered.

How To Store Fats, Leftovers, Frozen Foods—Fats: strain meat drippings and save in clean, covered tins in cool place. They must be used later as seasoning, for frying, and in other ways. Butter, margarine and opened containers of salad dressing should be kept covered in the refrigerator. Shortening and lard may be kept at room temperature.

Leftovers: place in container, cover or wrap in waxed paper and store in refrigerator. Creamed foods should be used as quickly as possible.

Frozen Foods: keep in freezer or freezing unit until ready to use. Do not refreeze after food has thawed. Frozen meat, poultry and fish should be thawed before cooking.

Greens—A Spring Tonic—No other group of foods furnishes so many minerals and vitamins as do leaves, and green and yellow vegetables. The leafy ones particularly are "tops" in supplying vitamin A and iron. On account of possible spray residues, leaves should be carefully washed before using.

Relish Trays—Besides the well-known strips of carrots, radishes, celery, and green onions, have you tried raw flowerets of cauliflower, strips of parsnips and turnips, brussels sprouts and green pepper rings? They are all good raw and are decorative in a relish tray.

White—Mrs. Selma Evans and baby girl, Mrs. Jean Spivey and baby boy, James Edward Spear, Mrs. Annie Byrum, Mrs. Constance Patrick, William Perry, Miss Sanfra Ange, Mrs. Patty Morris, Mrs. Blanche Goodwin, Master Earl Chesson, Mrs. Wilma Alexander, Mrs. Darcus Chesson, Mrs. Emma Hassell, Mrs. Hazel Rogerson, Mrs. Elizabeth Hassell and baby girl, Mrs. Audrey Perry and baby girl.

Negro—Annie Moring and baby boy, Mary White and baby boy, William Spellman, Rosa Beasley and baby girl, Eva Goodwin, Mable Holley and baby girl, Eula Smith, Ruth Gregory, Adeline Perry, Audrey Wilson and baby girl, Pleasant King, Daisy Manley and twin boys, Baby Lassiter.

Visiting ministers for the week were: White, the Rev. Lee A. Phillips; Negro, the Rev. W. H. Davis.

Patients discharged during the same period were: White, the Rev. Lee A. Phillips; Negro, the Rev. W. H. Davis.

Patients discharged during the same period were: White, the Rev. Lee A. Phillips; Negro, the Rev. W. H. Davis.

Patients discharged during the same period were: White, the Rev. Lee A. Phillips; Negro, the Rev. W. H. Davis.

Patients discharged during the same period were: White, the Rev. Lee A. Phillips; Negro, the Rev. W. H. Davis.

Patients discharged during the same period were: White, the Rev. Lee A. Phillips; Negro, the Rev. W. H. Davis.

Patients discharged during the same period were: White, the Rev. Lee A. Phillips; Negro, the Rev. W. H. Davis.

Patients discharged during the same period were: White, the Rev. Lee A. Phillips; Negro, the Rev. W. H. Davis.

Patients discharged during the same period were: White, the Rev. Lee A. Phillips; Negro, the Rev. W. H. Davis.

Patients discharged during the same period were: White, the Rev. Lee A. Phillips; Negro, the Rev. W. H. Davis.

Patients discharged during the same period were: White, the Rev. Lee A. Phillips; Negro, the Rev. W. H. Davis.

Patients discharged during the same period were: White, the Rev. Lee A. Phillips; Negro, the Rev. W. H. Davis.

Patients discharged during the same period were: White, the Rev. Lee A. Phillips; Negro, the Rev. W. H. Davis.

Patients discharged during the same period were: White, the Rev. Lee A. Phillips; Negro, the Rev. W. H. Davis.

Patients discharged during the same period were: White, the Rev. Lee A. Phillips; Negro, the Rev. W. H. Davis.

Patients discharged during the same period were: White, the Rev. Lee A. Phillips; Negro, the Rev. W. H. Davis.

Patients discharged during the same period were: White, the Rev. Lee A. Phillips; Negro, the Rev. W. H. Davis.

Patients discharged during the same period were: White, the Rev. Lee A. Phillips; Negro, the Rev. W. H. Davis.

Patients discharged during the same period were: White, the Rev. Lee A. Phillips; Negro, the Rev. W. H. Davis.

Patients discharged during the same period were: White, the Rev. Lee A. Phillips; Negro, the Rev. W. H. Davis.

Patients discharged during the same period were: White, the Rev. Lee A. Phillips; Negro, the Rev. W. H. Davis.

Patients discharged during the same period were: White, the Rev. Lee A. Phillips; Negro, the Rev. W. H. Davis.

Patients discharged during the same period were: White, the Rev. Lee A. Phillips; Negro, the Rev. W. H. Davis.

Patients discharged during the same period were: White, the Rev. Lee A. Phillips; Negro, the Rev. W. H. Davis.

Patients discharged during the same period were: White, the Rev. Lee A. Phillips; Negro, the Rev. W. H. Davis.

Patients discharged during the same period were: White, the Rev. Lee A. Phillips; Negro, the Rev. W. H. Davis.

Patients discharged during the same period were: White, the Rev. Lee A. Phillips; Negro, the Rev. W. H. Davis.

Patients discharged during the same period were: White, the Rev. Lee A. Phillips; Negro, the Rev. W. H. Davis.

Patients discharged during the same period were: White, the Rev. Lee A. Phillips; Negro, the Rev. W. H. Davis.

Patients discharged during the same period were: White, the Rev. Lee A. Phillips; Negro, the Rev. W. H. Davis.

Patients discharged during the same period were: White, the Rev. Lee A. Phillips; Negro, the Rev. W. H. Davis.

Patients discharged during the same period were: White, the Rev. Lee A. Phillips; Negro, the Rev. W. H. Davis.

Patients discharged during the same period were: White, the Rev. Lee A. Phillips; Negro, the Rev. W. H. Davis.

Patients discharged during the same period were: White, the Rev. Lee A. Phillips; Negro, the Rev. W. H. Davis.

Patients discharged during the same period were: White, the Rev. Lee A. Phillips; Negro, the Rev. W. H. Davis.

Patients discharged during the same period were: White, the Rev. Lee A. Phillips; Negro, the Rev. W. H. Davis.

Patients discharged during the same period were: White, the Rev. Lee A. Phillips; Negro, the Rev. W. H. Davis.

Patients discharged during the same period were: White, the Rev. Lee A. Phillips; Negro, the Rev. W. H. Davis.

Patients discharged during the same period were: White, the Rev. Lee A. Phillips; Negro, the Rev. W. H. Davis.

Patients discharged during the same period were: White, the Rev. Lee A. Phillips; Negro, the Rev. W. H. Davis.

Lee A. Phillips; Negro, the Rev. W. H. Davis.

Pearly Clifton Ashley Dies After Long Illness

Pearly Clifton Ashley, 75, Chowan County native and a retired farmer, died at his home in the Macedonia section Sunday morning at 8:45 o'clock following a long illness.

Surviving are his wife, Mrs. Mary E. Ashley; five sons, J. E. Ashley, P. C. Ashley, B. E. Ashley, T. L. Ashley and E. C. Ashley, all of Edenton; two daughters, Mrs. J. E. Leggett of Orlando, Florida and Mrs. E. L. Warren of Norfolk; a brother, Arnie Ashley of Norfolk; a sister, Mrs. Jim Foxwell of Norfolk. Twenty grandchildren and four great grandchildren also survive.

He was a member of the Macedonia Baptist Church, where funeral services were held Monday afternoon at 3 o'clock. The pastor, the Rev. Bennie Crawford, officiated with burial in the churchyard.

Pallbearers were Bill Forehand, Curtis Forehand, Willis Bond, Gilbert Harrell, Edward Goodwin and Lester Jackson.

MILK PRODUCTION

Milk produced on North Carolina farms during February, 1954, amounted to 126 million pounds. The N. C. Crop Reporting Service in releasing this estimate points out that the decline of 6 per cent from the 134 million pounds produced during January, 1954, is due entirely to the shorter (28 day) month. The February production quoted above is the highest of record for the month.

The monthly average number of milk cows on farms for February is placed at 391,000 head—1,000 above the preceding month and 13,000 head above the average for February of last year.

Legal Notices

ADMINISTRATOR'S NOTICE

Having qualified as administrator of the Estate of George W. Skinner, deceased, late of Chowan County, North Carolina, this is to notify all persons having claims against the estate of said deceased to exhibit them to the undersigned at Edenton, North Carolina, on or before the 18th day of March, 1955, or this notice will be pleaded in bar of their recovery. All persons indebted to said estate will please make immediate payment.

This March 18, 1954.
R. C. HOLLAND, Administrator
C. T. A. of
Estate of George W. Skinner,
Deceased

Mar 18, 25, April 8, 15, 22nd

North Carolina, Chowan County.

NOTICE OF ADMINISTRATRIX

The undersigned, having qualified as administratrix of the estate of Otto Bunch, deceased, late of Chowan County, N. C., this is to notify all persons having claims against said estate to present them to the undersigned on or before the 27th day of March, 1955, or this notice will be pleaded in bar of their recovery. All persons indebted to said estate will please make immediate payment to the undersigned.

This 23rd day of February, 1954.

NOVELLA W. BUNCH,
Administratrix of the Estate
of Otto Bunch, Deceased
RFD 2, Box 77
Belvidere, N. C.

J. N. Pruden, Attorney
Edenton, N. C.

Feb 25, March 4, 11, 18, 25, Apr. 1st

NOTICE OF REAL ESTATE

VALUABLE REAL ESTATE

The undersigned, representing the Trustees of Ballard's Bridge Baptist Church, will offer for sale to the highest bidder at public auction at said

"Church Parsonage", the same located on North Carolina Highway No. 32, Small Crossroads, North Carolina, at 11 o'clock A. M., Saturday, March 27, 1954, the following described real estate in Second Township, Chowan County, North Carolina, to-wit:

Beginning on West side of Virginia Road (now North Carolina Highway No. 32) at an iron stob; thence North 83 1/4 degrees West 228 feet to an iron stob; thence 16 1/2 degrees West 105 feet to an iron stob; thence South 73 1/2 degrees East 228 feet to an iron stob on the road; thence North 16 1/2 degrees East along the Virginia Road (now North Carolina Highway No. 32) to place of beginning, containing .54 of an acre.

Ballard's Bridge Baptist Church reserves the right to reject all bids. Terms of sale cash, 10 per cent purchase price payable on day sold, and balance payable on delivery of deed, said delivery to take place not later than January 1, 1955.

Dated and posted this 17th day of March, 1954.

WELDON A. HOLLOWELL,
Attorney.

March 18, 25c



G&W SEVEN STAR

90 Proof!

\$3.65
4 1/2 qt.

\$2.30
PINT

BLENDING WHISKEY, 62% NEUTRAL SPIRITS DISTILLED FROM GRAIN
GOODERHAM & WORTS LIMITED, PEORIA, ILLINOIS

Would you trade a Penny for a Dollar?

● You can if you use Natural Chilean Nitrate of Soda for your top-dressing and side-dressing needs. It costs a little more because it's worth more. But the difference in cost usually can be measured in pennies per acre, while the difference in value often amounts to dollars per acre.

Chilean "Bulldog" Soda gives you generous extra value. The nitrogen is 100 per cent nitrate. It's 100 per cent available (quick-acting); 100 per cent dependable. The minor elements make crops stronger, healthier. The sodium—26 pounds in every 100-pound sack—is a key to maximum returns on your entire fertilizer investment. It offsets the bad effects of acid-forming fertilizers...increases the efficiency of mixed fertilizers containing them. It releases "locked-up" potash in the soil...increases the availability and efficiency of soil phosphate...reduces potash, calcium and magnesium losses by leaching...develops larger, deeper root systems.

Sodium builds up the productivity of your land—more each year. It's an essential element for some crops...beneficial to most and necessary for maximum yields of many.

Pennies-per-acre difference in cost may mean dollars-per-acre difference in value to you. Chilean "Bulldog" Soda is the best fertilizer your money can buy. Use it for all of your top-dressing and side-dressing needs.

CHILEAN NITRATE of SODA




"FLYING ANTS" MAY BE TERMITE

Surety-Bonded TERMITE CONTROL

\$100,000,000 worth of building damage every year can be laid at the doorstep of wood-destroying termites! Now, of course, those hordes of swarming creatures at your doorstep could be flying ants. But chances are they're termites . . . and only an expert can really tell. So if you're smart, if you want your home to be really safe, call the world's leading termite expert, Otto the Orkin Man.

FREE INSPECTIONS

ORKIN
SINCE 1901

WORLD'S LARGEST PEST CONTROL CO.
Call Elizabeth City 6783 Coll.