

## HEAVY INCREASE IN PLANTING SHADE TREES EMPHASIZES IMPORTANCE OF CARE

The heavy increase in the planting of shade trees, more than 50 per cent in the past four years, has resulted in greater public consciousness of the many values of shade trees and a resultant greater demand for professional tree care, according to the National Arborist Association. Biggest increase has been in demand for annual care of trees on home properties, next care of community trees on streets and in parks. Utility companies use the tree services to the extent of more than \$50,000,000 annually.

There have been many debates on the value of a good-sized shade tree. When used for lumber it can be valued accurately. But who can measure the value of a Charter Oak, or other historical tree? Or the row of stately shade trees that beautify a street, make it cool and comfortable on hot summer days? The total value of all our shade trees has never been computed, but it would run into many billions, in fact, our home properties, our communities and our country would not be liveable without them. Size, species, climate, location, condition as well as land values must be taken into consideration in measuring the value of a shade tree. In the des-

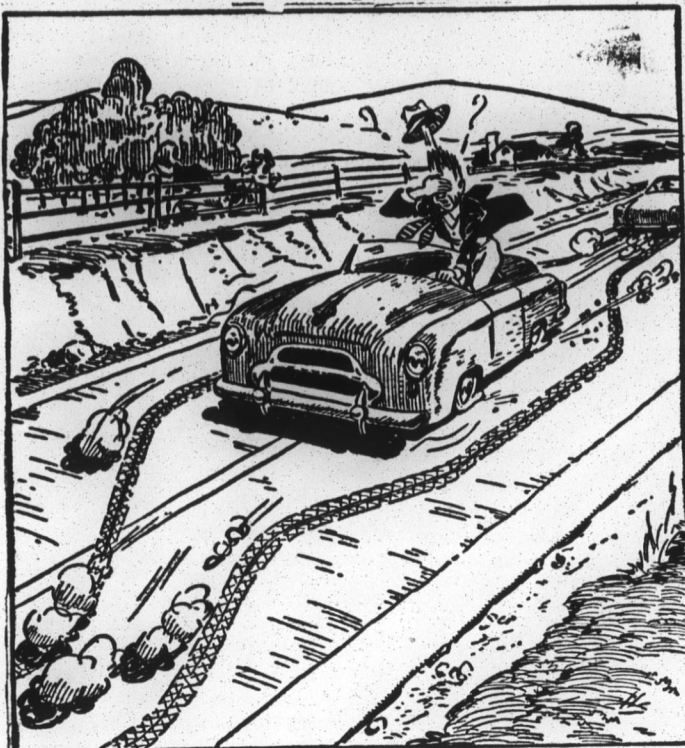
ert, such a tree might be worth thousands of dollars. Many average shade trees in excellent condition and in ideal locations on home properties have a value of \$800 to \$1,000 or more, according to the association. Sentimental values of some family and historic trees of course run much higher.

In late years there has been more widespread interest in shade trees as our population grows and residential areas fan out from cities. In some areas real estate developments have taken this into consideration by protecting existing trees before building operations began. Where this has not been done, it has often resulted in a sun-baked area where new trees have had to be planted. Business interests lately have discovered that tree-lined streets greatly increase trade in the hot summer months.

Trees act as sound barriers, diminishing traffic noises by as much as 45 to 60 per cent depending on their depth, and they also decrease dust counts greatly in dusty cities.

Proper care, including spraying and feeding of trees is insurance of the continuance of the many benefits in comfort, beauty and better living that trees bring, says the arborist's group.

## "Right of Way" Looks Different From Hospital Bed



"Go ahead, you've got the right of way!"

Whispered in your ear by the accident gremlin, these are the most famous last words of all. They generally precede many—too many—of all serious accidents.

Usually the man who assumes he has the right of way is in a hurry—full of that impatience that makes us bull our way through to save a few seconds. Or to think we save a few seconds. Actually, "haste makes waste" is a proverb doubly applicable to driving—it wastes both lives and time.

It's been proved, too. A famous racing driver tried it not long ago. He made two 10-mile drives through city traffic—the first at the greatest possible speed, pushing lights, bending and breaking most traffic laws—the second over the same route, but driving carefully and observing all laws and the rules of courtesy.

Yet his "fast" trip saved less than 30 seconds over the one in which he observed all the laws!

Even if you saved ten times that by taking chances in bulling through against both law and courtesy—it just wouldn't be worth it. You'd be risking life and limb—yours and those of others—for next to nothing.

The right of way does you no good—if the other driver doesn't know you have it!

## Texaco Now Offering New Type Of Gasoline

The Texas Company has announced a new type of premium gasoline, incorporating an exclusive, petroleum-derived compound called Petrox, which is described by Augustus C. Long, president, as "a wholly new answer to the fuel needs of today's high compression automobile engines."

A. B. Allen, Norfolk division manager, who made the announcement at a luncheon at the Monticello Hotel, said the new product is now available at all Texas Company stations in the area.

In quoting from a statement issued by Long, Allen said "Petrox is a petrochemical compound which has its origins in research initiated by the Texas Company 20 years ago. The perfection of this revolutionary fuel component, and the process for turning it out in quantity under continuous quality control, were the result

of a research program costing millions of dollars."

Allen said Texas Company research officials are predicting an increase in maximum-performance engine life of 60 per cent, and that a 300 per cent increase in spark plug life can be anticipated in comparison with other premium fuels tested.

Ring out the darkness of the land  
Ring in the Christ that is to be!  
—Alfred Tennyson

## SHOULD YOUNG TEENERS GO STEADY?

At what age should teen-agers be permitted to keep steady company? You'll find an interesting, helpful answer to this question in a revealing article by an internationally known writer, in the April 18th issue of THE AMERICAN WEEKLY Magazine in Colorgrave With The BALTIMORE SUNDAY AMERICAN Order From Your Local Newsdealer

**COMMISSIONED ENSIGN**  
The Navy's Officer Candidate School started approximately 700 young Reserve Officers off on their Naval careers April 2nd after graduation ceremonies held at the U. S. Naval Base at Newport, R. I. Included among the newly commissioned Ensigns of the Line was Herman Hallet

Daniels, son of Mrs. Roxie B. Daniels of Colerain.

James H. Smith, Jr., Assistant Secretary of the Navy for Air, was the principal speaker at the exercises, and presented the new officers with their commissions.

TRY A HERALD CLASSIFIED AD

LET

**R. Elton Forehand, Jr.**

Handle Your

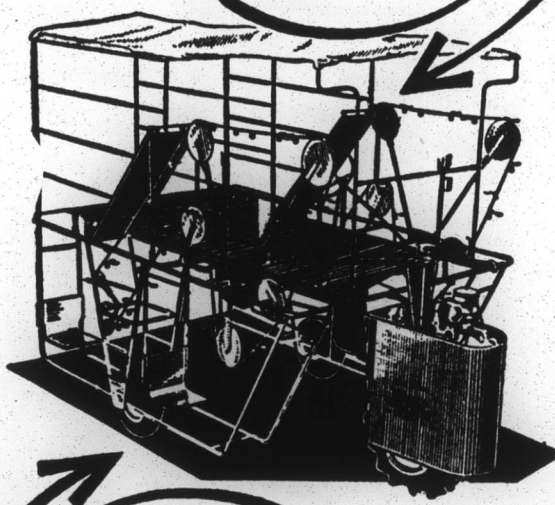
**FIRE — AUTO — CASUALTY — BONDS INSURANCE**

— • —  
**REAL ESTATE**

305 Citizens Bank Building

PHONE 607

You too can save labor and make more profit . . .



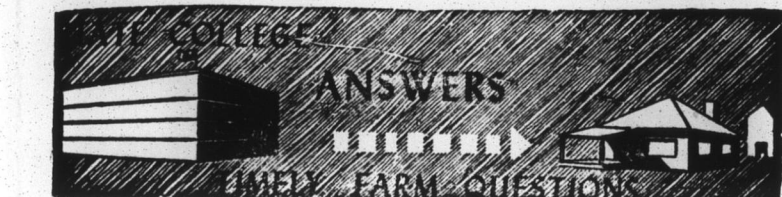
with the  
**Silent Flame Tobacco Harvester**

Saves up to 50% on labor . . . Harvests up to 150 sticks per hour . . . Travels from 1/2 to 20 m.p.h. . . Works equally well in wet, sandy, or hilly fields.

**ALBEMARLE MOTOR COMPANY**

W. HICKS STREET

EDENTON, N. C.



Question: Do you have any information on raising peafowls?

Answer: No. But a letter to the Wildlife Management Institute, 709 Wire Building, Washington 4, D. C., may bring results. They may have one or more booklets on the subject which sell for a small sum.

Question: What causes bloat?

Answer: Agricultural research has uncovered few absolute truths about the causes of bloat. One theory holds that gases produced in the animal's rumen are toxic. The "tickle theory" holds that scratchy roughage in the diet induces belching (a lack of such roughage would cause the animal not to belch off gas). A third theory holds that saponins in alfalfa, when mixed with water, form a stable foam. A fourth theory explains bloat on legume pastures as being due to a high density of legumes which sink to the bottom of the rumen, thus raising the level of the water in the rumen above the outlet of the esophagus. One thing is agreed: bloat does not result from an over-production of gas

in the rumen as generally supposed. Scientists now think it is caused by a failure of the cow's belching mechanism.

Question: How can I recognize blue mold in my tobacco plant bed?

Answer: The disease gets its name from the characteristic bluish (sometimes greyish) cottony mold that develops on the underside of diseased leaves. Generally, blue mold is first observed in spots of plants scattered over the plant bed. The plants in affected spots may be first noticed as having yellowed leaves with the margins cupped downward. Later the leaves or entire plants may be killed in spots, or throughout the bed, giving it a "burned-over" appearance. Blue mold does not cause circular lemon-yellow spots or brown spots surrounded by wide yellow bands as does wildfire.

Success in life is a matter not so much of talent or opportunity as of concentration and perseverance.  
—Charles William Wendte.

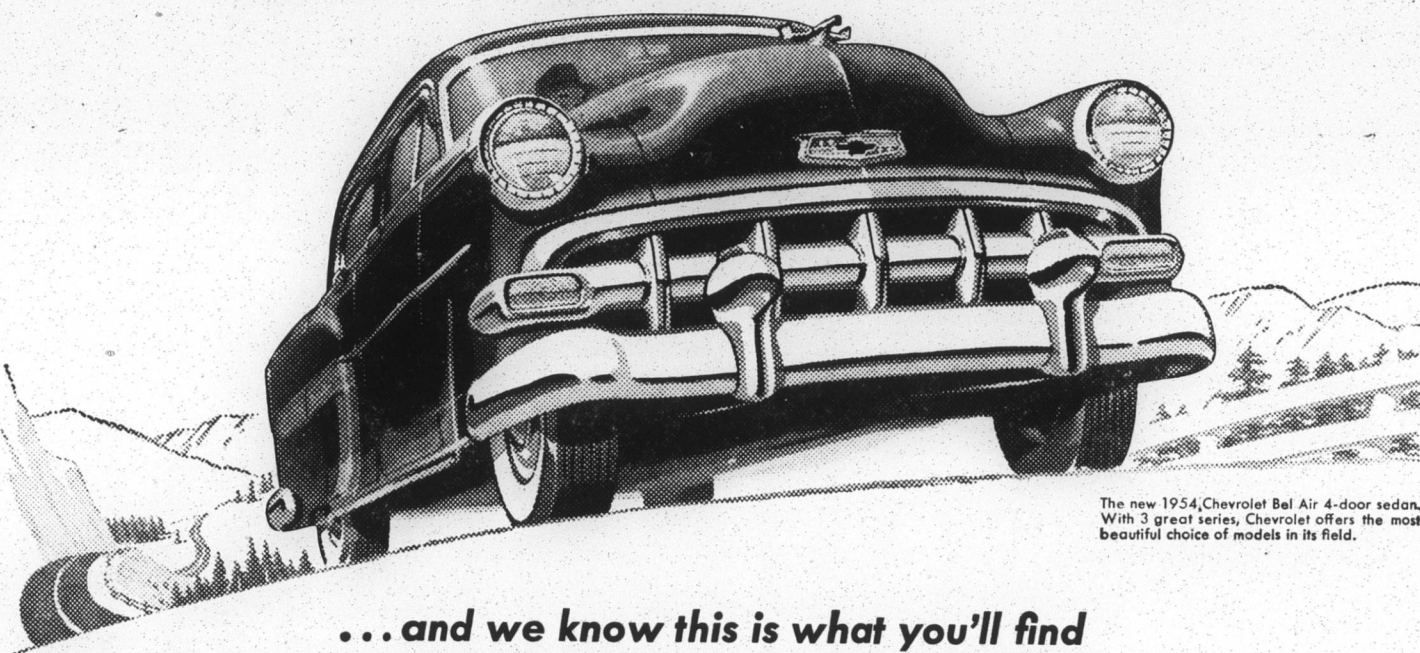


\$2.00  
PINT

4/5 qt.  
\$3.20

**KENTUCKY WHISKEY • A BLEND**  
86 PROOF, 70% GRAIN NEUTRAL SPIRITS. SCHENLEY DIST., INC., FRANKFORT, KY.

## Make your own "proving ground" test



...and we know this is what you'll find

**Chevrolet is out ahead in powerful performance**

You can easily tell the difference between engines when you drive—and the difference is all in Chevrolet's favor! That's because Chevrolet's great engines deliver full horsepower where it counts—on the road. What Chevrolet promises, Chevrolet delivers!

**Chevrolet is out ahead in economy**

There's new power, new performance and new economy in both 1954 Chevrolet engines—the "Blue-Flame 125" in Powerglide models and the "Blue-Flame 115" in gearshift models. And they bring you the highest compression ratio of any leading low-priced car. That's why they can deliver a big gain in power, acceleration and all-around performance, along with important gasoline savings!



Year after year more people buy Chevrolets than any other car!

Your test car's ready now . . . We'll be glad to have you compare the smooth, quiet performance of this new Chevrolet with any other car in its field. Come in and put it through any kind of "proving ground" test you care to, and judge its performance for yourself. Your test car's ready now and we hope you are, too.

**B. B. H. MOTOR COMPANY**

"YOUR FRIENDLY CHEVROLET DEALER"

N. Broad and Oakum Streets

Edenton, N. C.