

Wheat Referendum Scheduled July 23rd

Result Will Determine Quotas and Price Support

As July 23 approaches, the date for the wheat referendum, more and more growers are asking questions about the marketing quotas and the referendum, according to Chairman W. A. Harrell of the County Agricultural Stabilization and Conservation Committee.

Pointing out that County ASC Office people and all county and community committeemen have the answers to program operation questions, Chairman Harrell gave a quick review of answers he is most frequently called upon to give.

The results of the referendum will determine whether or not marketing quotas, with penalties for overplanting acreage allotments, will be in effect for the 1955 crop. They will also determine the level of price support which will be available. These and other basic questions are being studied carefully by wheat growers.

Some have asked, "Who is eligible to vote?" The answer is, any farmer who would be subject to the quotas. Farms will be subject to the quotas if the wheat to be harvested for grain in 1955 is more than 15 acres.

"If quotas are in effect, what will be the penalty for failure to comply with acreage allotments?" The penalty on excess wheat will be at the rate of 45 per cent of the May 1, 1955, parity price.

Another frequently asked question is, "How does the referendum affect 1955 price supports?" The answer is: If two-thirds or more of the farmers who vote favor quotas, the full level of price support which is authorized for the 1955 crop—apparently somewhere from 90 to 75 per cent of parity—will be available for those who comply with their wheat and other acreage allotments. If less than two-thirds favor quotas, price support will be at 50 per cent of parity for those who comply with their acreage allotments. No price support is available for those who fail to comply with acreage allotments, with or without the marketing quotas.

In answer to another frequently-asked question, Chairman Harrell states briefly how the farm allotment is determined. First the national acreage allotment is apportioned among States, and then among the counties, according to the acreage seeded to wheat during the latest 10-year period, adjusted for weather trends and other factors. This year the national acreage allotment is 55 million acres, the level specified by law under present supply conditions. Allotments are determined for farms according to past wheat acreage, tillable acres on each farm, crop rotation practices, type of soil, and topography. Farmers in doubt about their eligibility to vote in the referendum, or any program question, should see their County ASC Office.

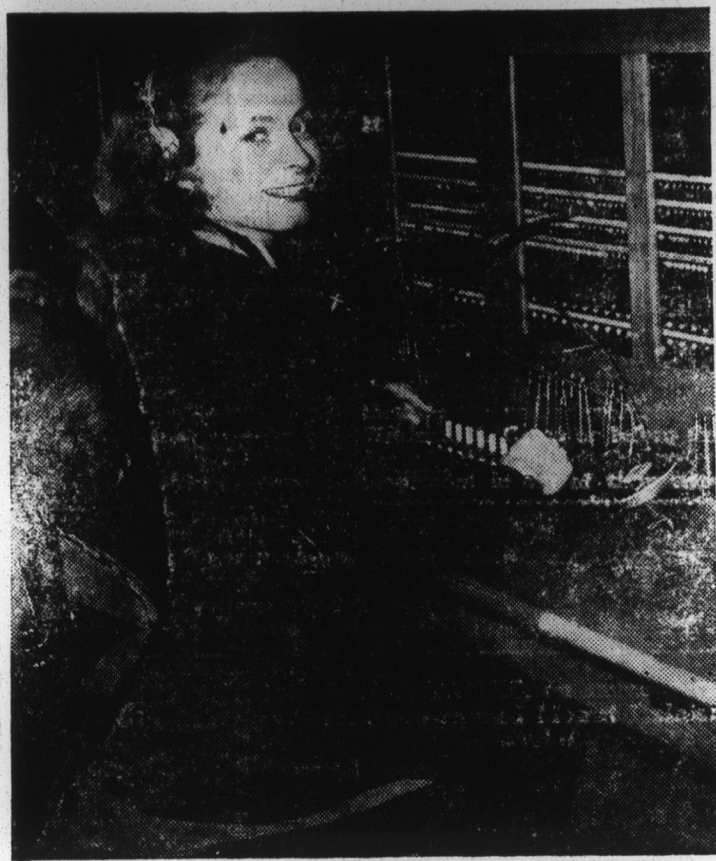
Due to the small number of producers who will be eligible to vote in the referendum in Chowan County there will be just one polling place in the county. The voting place will be the County ASC Office. The polls will open at 8:00 A. M., and close at 5:00 P. M., on Friday, July 23.

If a man empties his purse into his head, no one can take it from him.

—Benjamin Franklin.

Intelligence does not originate in numbers, but is manifested through them.

—Mary Baker Eddy.



VOICE WITH A SMILE—Mme. Monique Galney operates a U.S. Army telephone switchboard at Seine Area headquarters in Paris.

Negro HD Women Attend Conference

The thirty-second Annual State Conference of Negro Farmers and Home-

Makers was held in Greensboro July 6-9 at the A. and T. College. The program consisted of special classes held for men and women. The men were given information pertaining to the latest improved practices on Farm Activities such as: Soil Management, Weed Control, Proper Uses of Fertilizers, Vegetable Production, Practical Feeding and Care of Farm Animals, etc. The program for women consisted of information on such practices as Liveable Homes, Stretching Your Food Dollar With Milk, How to Choose and Use Milk for everyone year round, Simple Entertainment, What You Can Expect of Today's Recipes and Meals to Remember.

Both men and women met jointly for the assembly programs in the morning and evening. During which time special programs were held. In connection with the conference an Institute for Rural Ministers was held. The ministers met separately for their meetings and met jointly with the farm people for the general assembly. The purpose of the Institute was to bring about a closer cooperation with the rural ministers and other agencies that are working to help farm people live better at home and on farms.

The following women were in attendance from Chowan County: Mrs. Mable Jordan, Edenton, Mrs. Bertha Twine, Center Hill, Mrs. Elvora Felton, Cisco, Mrs. Louvenia Valentine, Green Hall and Mrs. Katie Morring, Virginia Fork.

Edenton Police Arrest 52 Persons In June

Chief of Police George I. Dail reports that during June Edenton police made 52 arrests, of whom 51 were found guilty as charged. Of those arrested 24 were white males, one white female, 25 colored males and two colored females. Miscellaneous traffic arrests led the list with 18, followed by 10 arrested for drunkenness.

Fines amounted to \$349.50 and costs \$310.25 or a total of \$659.75, of which \$163.30 for officers' fees was turned

back to the town. During the month police answered 63 calls, investigated two accidents, worked four funerals, reported 34 street lights out, extended 34 court-tesies, found 25 doors unlocked, made 48 investigations and issued 540 traffic citations. The police made 620 radio calls and were on the air 51 minutes and 40 seconds.

Veteran Bandsman Has Kept Soldiers Stepping 28 Years

Fort Benning, Ga.—A veteran Army sergeant here can claim the distinction of having kept literally thousands of soldiers stepping during the last twenty-eight years.

However, Sergeant First Class Albert Galuppo is no long-run, legendary disciplinarian.

The Providence, R. I., soldier now is first sergeant of the 122nd U. S. Army Band after a career of tootling for uncounted parades and military

social events.

Galuppo was on the stand with Paul Whiteman and Jan Garber before his enlistment in 1925. His first U. S. Army assignment was with the 10th Coast Artillery Band at Fort Adams, R. I. Soon, however, he got a baton of his own and directed the dance orchestra for Madison Barracks, N. Y.

In the next 15 years, the sergeant gave out with the music via saxophone or clarinet at various Army posts.

Two years with the Fifth Division Band in Iceland brought some frigid duty for Galuppo. In 1944, the sergeant went to Europe, where he played band concerts for front-line troops in rest areas.

Upon his return, he served with the Army Recruiting Service in Providence. This was his only non-musical tour of duty.

Before coming to Fort Benning, Galuppo played with the United States Military Academy Band at West Point, N. Y., one of the high points of his career.

State College Answers

Question: Is there a relationship between soil fertility and the type of weeds that grow on the land.

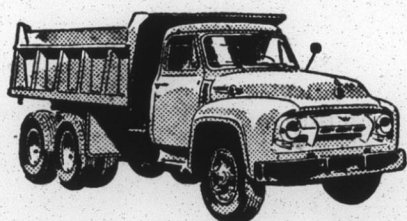


THOMAS LIPTON

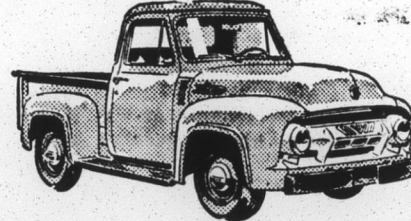
"Dr. Optimist is the finest chap in the names directory of any city."

OURS is a profession of helpfulness. We have devoted to it our highest ideals of service and the resources of our modern organization.

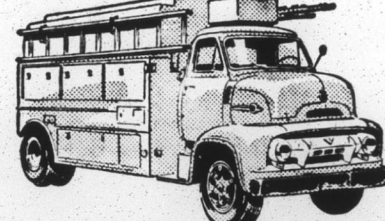
WILLIFORD
Funeral Home
Phone 231 • EDENTON, N. C.
THE HOME OF THE ALBEMARLE
MUTUAL BURIAL ASSOCIATION



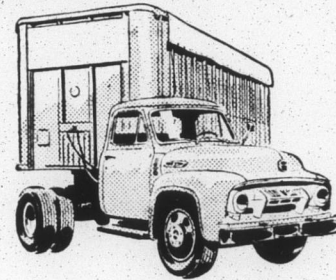
New Ford Master-Coach Power Steering is standard equipment on this new Ford T-800 factory-built 6-wheeler. GVW 40,000 lbs. 170-h.p. Cargo King V-8.



New Power Brakes on this new Ford F-100 Pickup, at low extra cost. With 130-h.p. V-8 it's the world's most powerful Pickup! GVW 4,800 lbs. Deluxe Cab shown (extra cost).



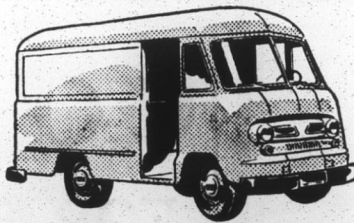
New Cab Forward giant! Ford C-900 Big Job. GVW 27,000 lbs., GCW 55,000 lbs. Hauls 35-ft. trailers legally in every state. 170-h.p. Cargo King V-8.



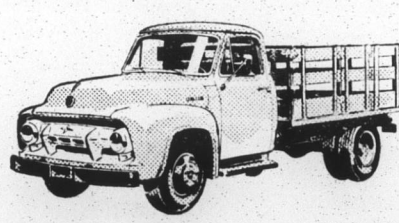
Choice of 3 engines in this new Ford F-600: two V-8's and a Six. GVW 16,000 lbs., GCW 28,000 lbs. Synchro-Silent transmission. Deluxe Driverized Cab shown (extra cost).

Now more than ever,
Ford offers the

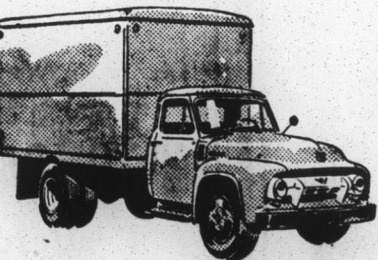
ONE RIGHT TRUCK FOR YOUR JOB!



Fordomatic Drive at low extra cost on this new Ford F-350 Parcel Delivery chassis. No-clutch, no-shift driving to handle bigger routes quicker. GVW 7,800 lbs.



New 9-R Platform-Stake, max. GVW 9,500 lbs., or 9-ft. Express, Ford F-350, 7,100 lbs. GVW. Fordomatic Drive at low extra cost. 130-h.p. V-8 or 115-h.p. Six.



Outsells all other 1½-tonners! New Ford F-500, GVW 14,000 lbs., GCW 24,000 lbs. Optional 2-speed rear axle at extra cost. Choice of 130-h.p. V-8 or 115-h.p. Six.

TRIPLE SAVINGS!

1. GAS-
SAVING
POWER
2. DRIVER-
SAVING
EASE
3. MONEY-
SAVING
CAPACITIES

ONLY FORD gives you so much in all three essentials of lower-cost trucking! Why drive a "down payment"? Trade now for a new Triple Economy Truck!

FORD TRIPLE ECONOMY TRUCKS

MORE TRUCK FOR YOUR MONEY! F.D.A.F.

YOU'LL HAVE A
WONDERFUL TIME WITH
A **SCOTT-ATWATER!**



IT'S THE OUTBOARD THAT BAILS YOUR BOAT! You're set for years of fun afloat when you're the proud owner of a new Scott-Atwater. Besides the luxury of Bail-a-matic, Scott-Atwater offers you new smoothness, new quietness thanks to Pillowed Power; the matchless efficiency of Aquablade Lower Unit; the convenience of remote Stowaway Fuel Tank, Complete Shift, Twist-Grip Speed Control, Remote Control Connections, many other features. Double your fun this summer and a sweet-performing Scott-Atwater!

4 MODELS WITH BAIL-A-MATIC
5hp \$210.07 — 7½hp \$237.35 — 10 hp \$297.75
and 16hp \$349.95

COME IN AND SEE THE NEW SCOTT-ATWATER AT

RALPH E. PARRISH, Inc.

"Your Frigidaire Dealer"
Edenton, North Carolina