

# Miss Zella Painter Weds Joseph Upton

## Wedding Took Place In Nurses' Home September 2

The marriage of Miss Zella Painter, daughter of Mr. and Mrs. Charles Henry Painter of Plymouth to Joseph Hilton Upton of Norman Parks, Georgia, son of Mr. and Mrs. J. W. Upton, took place Sunday afternoon, September 2, at 4 o'clock in the Chowan Hospital Nurses' Home.

The Rev. R. N. Carroll, pastor of the Edenton Baptist Church, officiated at the double ring ceremony.

The bride and bridegroom entered together and the ceremony was performed before a setting of palms and white carnations mixed with gladioli. Prior to the ceremony wedding music was played by Mrs. W. D. Walker of Plymouth.

The bride was dressed in a street length suit of teal blue with white accessories and carried a prayer book covered with white carnations and tube roses.

Following the ceremony a reception was held in the Nurses' Home. Later the couple left for a wedding trip to Nags Head and since their return are residing at 119 W. Eden Street.

The bride is a graduate of the M. Pisacale Academy, Asheville, N. C. and is a member of the nursing staff of Chowan Hospital.

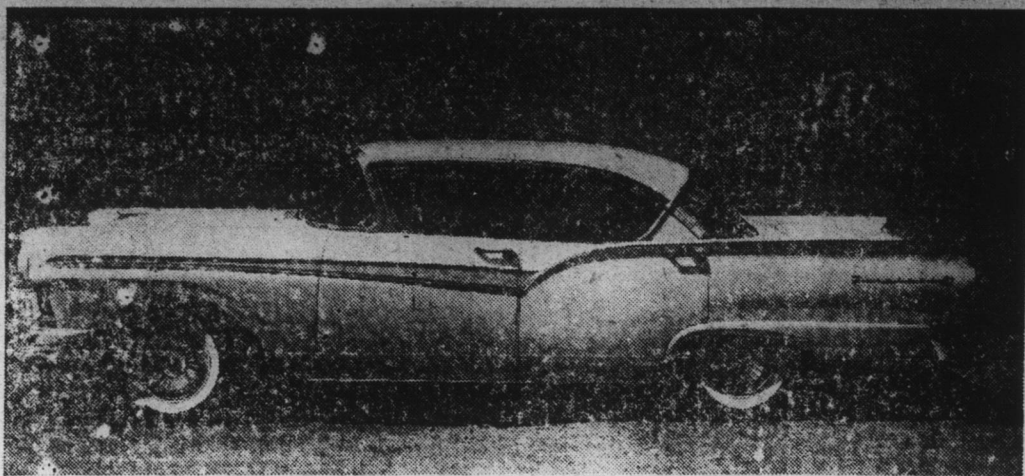
# Beaufort Fourth Victim Of Aces

Continued From Page 1, Section 1 to the 19. Hardison, Roche and Hollowell moved the ball to within a foot of the goal line, from where Roche crashed over for the touchdown. About midway of the quarter the Aces intercepted a pass on the 45, from where Ted Hardison broke through and raced down the sidelines for a touchdown.

On the first play of the final quarter Downum took a hand-off and put on the steam to race from near midfield for his second touchdown. The final Edenton touchdown was made by the second team about midway of the quarter after the first team blocked a kick and recovered on the 11. Hollowell and Stallings picked up 7 yards and Hardison crashed over for the score.

Billy Bunch and Jerry Downum played an exceptionally thrilling game both on offense and defense while Jesse Copeland gave a good account of himself substituting at fullback for Bruce White, who was kept out of the game due to an injured shoulder. In the line Overton, Sneight, Chappell, Small, Harrell, Fletcher and Ashley played very well. Johnny Kramer at quarterback handled the team like a veteran and Robert White, 125-pound substitute quarterback duplicated his performance which won the admiration of fans when substituting for Kramer early in the season. Practically every player on the bench, except the injured Bruce White, saw action and gave good account of themselves.

**First Quarter**  
Edenton won the toss of the coin and elected to receive. Billy Bunch took the ball on the Aces' 15 yard line and, aided with some good blocking, he broke through the bulk of the Beaufort team and outran two or three of the Beaufort boys on his 85-yard sprint. The sudden touchdown apparently took the wind out of the sails of the Carteret County boys. Overton's kick for the extra point went wide, so that the Aces led 6-0 before the game was a minute old. Kramer kicked and Beaufort's Copeland returned to his own 19. In three plays Beaufort gained only one yard, so that they kicked on fourth down. It was the Aces' ball on their own 48, but the play was called back and Edenton was penalized 15, giving Beaufort a first down. On the next play Beaufort fumbled and Edenton recovered on the Beaufort 40. Bunch picked up 5 yards and Copeland went for a first down, but the Aces were penalized 15 yards. Kramer gained 2 and with the ball on the Beaufort 45 Kramer passed to Downum, who scooped for the second touchdown after Overton executed a perfect block. The kick for the extra point again failed, so that the Aces went ahead 12-0. On Edenton's kick Beaufort returned to their own 38. Kirk picked up 8 and Piner made a first down. Kirk and Piner together gained 4 yards and then Beaufort was penalized 15. A pass was incomplete and Beaufort kicked, with Downum returning to the Beaufort 43. After Bunch picked up 2 yards, he broke through and



From the road up, 1957 Fords are a complete departure from previous models. They will be unveiled by Ford dealers in 19 body styles, of which this is the four door Victoria, a member of the new "Fairlane 500" series. Fairlane models are nine inches longer and four inches lower than their 1956 counterparts. Though the new models are lower, interior headroom is as great as last year, since the car's chassis and floor are re-designed for a lower center of gravity.

raced down the side lines for a touchdown with two Beaufort men on his heels but unable to overtake him. Overton's kick for the extra point was good and the Aces led 19-0. On Kramer's kick Piner returned to the Beaufort 29. On the first play Beaufort was unable to gain through the line, but on the next play Piner made a first down to the 42-yard line. Piner picked up a yard and Kirk 7. They were held for no gain on the third play as the quarter ended. The Aces were leading 19-0.

**Second Quarter**  
On the first play Piner made a first down to the Edenton 44. Kirk then reeled off 11 yards for a first down. Gillikin added 8, but Piner was thrown for a 4-yard loss. A pass to Goodwin fell short, but the Aces were penalized 15, giving Beaufort a first down on the Edenton 15. Kirk added 4 yards and Gillikin 3. After Piner was held for no gain, on fourth down he drilled to the 6-yard line for a first down, from where Kerk went over for the lone Beaufort touchdown. Piner broke through to make the extra point, so that the score stood at 19-7. Beaufort kicked and the Aces returned to their own 40. After a pass to Overton failed, Kramer picked up 2, and Copeland rammed through for a first down. Bunch added 3 and on a pitch-out Downum raced 16 yards to the Beaufort 24 for a first down. Kramer picked up 6. Copeland failed to gain and Bunch lost 2. Kramer gained 2, so that it was Beaufort's ball on their own 17. Kirk gained 2 but on the next play 4 yards

were lost on a recovered fumble, for no gain. The Aces then intercepted a pass on the Beaufort 45 from where Ted Hardison raced along the sidelines for another touchdown. Ray Hollowell was dropped before he could make the extra point. Kramer's kick was returned to the Beaufort 25 and the Aces were penalized 15. Piner picked up 2, Gillikin 4 and Paul then went to the Aces' 42 for a first down. In two plays Kirk gained 4 yards and Bunch intercepted a pass, returning the ball to the 37-yard line. Downum picked up 3 and a pass to Overton was incomplete on the midfield stripe as the quarter ended.

**Third Quarter**  
Kramer kicked to start the second half and Piner returned to his own 32. Beaufort was penalized 15 yards and after Kirk picked up 2 Beaufort fumbled but recovered the ball on their own 12-yard line. Beaufort kicked and Ashley returned to the 19. At this point Coach Billings sent in his entire second team, with Robert White quarterbacking. Roche rammed through the line for 5 yards and Hardison picked up 4. Roche was stopped at the line of scrimmage and Hollowell then bulled his way to the 4-yard line for a first down. Hardison went within a foot of a touchdown after which Roche broke through for a touchdown. Hardison made the extra point by plunging through the line and the Aces went ahead 32-7. On Edenton's kick Beaufort returned to their own 28. Piner and Gillikin alternated to chalk up a first down on their own 46. Beaufort was penalized 5 yards and on the next play held

Automatic **LIVING LEVEL HEAT**

at \$30 SAVING!

on these new

## DUO-THERM

OIL HOME HEATERS

with POWER-AIR

3-4 room model,

Regular \$144.95

NOW 114.95

You Save... \$30.00

4-5 room model,

Regular \$154.95

NOW 124.95

You Save... \$30.00

**FREE HEATING CLINIC SERVICE!**

Got a heating problem? Come in and discuss it with our DUO-THERM heater specialist. We'll show you how to get the most heating comfort... how to heat any living area cheaply and efficiently!

**Pre-season Trade-in Specials! Limited time!**

Beautiful new 1955 Duo-Therms in smart Sandalwood finish!

Blower circulates heat by force. Turns itself on and off automatically. Gives greater comfort floor to ceiling, saves up to 25% on fuel!

**EXPERT SERVICE**

—and—

**INSTALLATION**

**\$10 DOWN PAYMENT**

—and—

**EASY FINANCE TERMS**

# Byrum Hardware Company

"WE SELL 'EM" — "WE SERVICE 'EM"

Edenton, North Carolina

failed in his plunge through the line for the extra point, so that the score went to 51-7. The first team took the field and Hassell returned Kramer's kick to the Beaufort 20. Beaufort was penalized 5 yards, and a pass was broken up. Paul in two plays picked up 6 yards after which a pass was completed for a first down on the 45. Two subsequent passes were broken up by the Aces, but the third pass play netted 9 yards. The fourth pass was broken up, so that the ball went over to the Aces on the 45. Again the second team took the field. Hollowell lost 3 yards but Beaufort was penalized 15 giving the Aces a first down. Roche picked up 4 yards and Robert White could not find an opening for a pass, so that he was dropped for no gain as the game ended with the Aces winning 51-7.

The starting lineups:  
 Edenton Beaufort  
 Overton LE Moore  
 Sneight LT Smith  
 Chappell LG Perry  
 Small C Willis  
 Harrell RG Hardesty  
 Fletcher RT Guthrie  
 Ashley RE Jones  
 Kramer QB Kirk  
 Bunch LHB Piner  
 Downum RHB Gillikin  
 Copeland FB Copeland  
 Scoring touchdowns — Edenton: Bunch 2, Downum 2, Hardison 2, Copeland 1, Roche 1. Beaufort: Kirk. Points after touchdown—Edenton: Overton 1, Hardison 1, Kramer 1. Beaufort: Piner 1.

# Funeral Held Friday For Mrs. Sallie Cobb

Funeral services were held at Capehart's Baptist Church in Bertie County Friday afternoon at 2 o'clock for Mrs. Sallie White Cobb, 70, widow of the late P. F. Cobb of Merry Hill, who died Wednesday morning of last week in a Newport News hospital after a long illness.

The Rev. Paul F. Burke, pastor officiated, assisted by the Rev. W. E. Farrar of Newport News. Burial was in the church cemetery.

Surviving are six sons, Hilary Cobb, Sidney Cobb and Dennis Leon Cobb of Newport News, Clyde Cobb of Windsor, Melvin Cobb of Merry Hill and P. F. Cobb, Jr.; two daughters, Mrs. Cecelia Harris of Marshallburg, N. C., and Mrs. Marie Hill of Littleton; five brothers, Ernest White, Jay White and Joe White of Merry Hill, Herman White

of Chester, Pa., and Miles White of Windsor; six sisters, Mrs. W. H. Taylor, Mrs. S. B. Adams and Mrs. E. J. Pruden of Merry Hill, Mrs. R. P. Smithwick and Mrs. B. V. Williford of Windsor and Mrs. Jesse Perry of Williamston, and 17 grandchildren.

**ON RADIO SUNDAY**  
 The Trueneros, an Edenton group, will present a program of popular music over radio station WCDJ each Sunday afternoon at 4:15 o'clock. In the group are Francis Slade, Clyde Slade, Tom Bemby, Terry Bennett and John Earl Whitson.

# 6 YEARS OLD

Park & Tilford

## KENTUCKY BRED

### STRAIGHT BOURBON WHISKEY

**\$3.85**

4/5 Qt.

**\$2.45**

Pint

Kentucky Straight Bourbon Whiskey • 86 Proof • Bottled by Park & Tilford Distillers Corp. at Louisville, Kentucky

## TAYLOR THEATRE

EDENTON, N. C.

Saturday Continuous from 1:30  
 Sunday, 2:15, 4:15 and 8:45

Thursday and Friday,  
 October 4-5—  
 Jeff Chandler and  
 Laraine Day in  
 "TOY TIGER"

Saturday, October 6—  
 John Payne in  
 "TENNESSEE'S PARTNER"  
 —also—  
 Late Show 11:15  
 Terry Moore and  
 Frank Lovejoy in  
 "SHACK OUT ON 101"  
 MRS. N. BUNCH

Sunday, Monday and  
 Tuesday, October 7-8-9—  
 Burt Lancaster, Tony Curtis  
 and Gina Lollobrigida in  
 "TRAPEZE"  
 CinemaScope

Wednesday, October 10—  
 Grace Kelly in  
 "THE SWAN"  
 CinemaScope with  
 Stereophonic Sound  
 J. ELTON JORDAN

HI-WAY 17  
 Drive-In Theatre  
 EDENTON, N. C.  
 Edenton-Hertford Road  
 CinemaScope Screen

Friday and Saturday,  
 October 5-6—  
 Double Feature  
 Phil Carey in  
 "WYOMING RENEGADES"  
 —also—  
 Rosalind Russell in  
 "THE GIRL RUSH"  
 DR. L. P. WILLIAMS

Sunday, October 7—  
 Jennifer Jones and  
 Gregory Peck in  
 "DUEL IN THE SUN"  
 H. C. JACKSON

Monday and Tuesday,  
 October 8-9—  
 Dale Robertson in  
 "SON OF SINBAD"  
 MRS. J. A. POWELL

Wednesday and Thursday,  
 October 10-11—  
 John Wayne in  
 "FLYING LEATHERNECKS"  
 MISS LOUISE COKE

NOTE: If your name appears in this ad, bring it to the Taylor Theatre box office and receive a free pass to see one of the pictures.

# Taylor Theatre-Edenton, N. C.

3 DAYS—SUNDAY, MONDAY AND TUESDAY, OCT. 7-8-9  
 Sunday Shows 2:15-4:15-8:45—Mon.-Tues. 3:30-5:30-7:30 & 9:30  
 NO ADVANCE IN PRICES

HECHT AND LANCASTER present

## TRAPEZE

LANCASTER

GINA LOLLOBRIGIDA

TONY CURTIS

Also Starring  
 KATY JURADO-THOMAS GOMEZ with JOHN PULEO-MINOR WATSON • Directed by CAROL REED Produced by JAMES HILL  
 Screen play by JAMES B. WEBB • Adaptation by LIAM O'BRIEN • A SUSAN PRODUCTIONS INC. Picture • Released thru UNITED ARTISTS