

### No Comment

By JAMES W. DOUTHAT  
Assistant Vice President, Government  
Relations Division of the National  
Association of Manufacturers

"NO COMMENT" is a report of incidents on the national scene, and does not necessarily reflect NAM policy or position.

Washington, D. C.—Speculation is increasing in Washington over the possibility of bringing about a realignment of the two political parties into conservative and "liberal" groups.

Admittedly, this has every appearance of being a long-range program. However, there are some who believe that recent developments might speed it up.

### BUSINESS OPPORTUNITY

A PROFITABLE BUSINESS

For Sale or Rent

GOOD GROCERY AND SERVICE STATION BUSINESS

★ PAYING WELL ★

Call Hertford 2231 or Sunbury 2098

much more rapidly than generally expected.

Among these developments is the fact that some Southern Democrats contend that Democratic National Chairman Butler, and others, are ignoring them and are threatening to read them out of the Party. This complaint goes far beyond the civil rights issue.

Another development is the campaign by some "liberal" Republicans to seize control from the conservatives of the Party organization in the Senate. The conservatives say that this campaign, if successful, would mean a long step toward the end of the traditional Republican Party.

Here is the way some astute politicians in Washington analyze the situation:

If the Southern Democrats are going to be read out of the Party—or if their influence within the Party is to be destroyed—they would at least give serious consideration to aligning with a new group advocating conservative principles.

If the so-called "liberals" take over control of the Republican Party—with control of the Senate Republicans as an important step—the conservative Republicans could be expected to give serious consideration to aligning with a new group advocating conservative principles.

If this should reach the action stage, the big question, of course, then would be the basis for forming the new group. Three possibilities are being mentioned:

1. An entirely new party could

be formed, consisting of conservative Democrats and conservative Republicans. This would mean a third party and it is pointed out that traditionally third parties have not been successful in the United States.

2. Conservative Democrats could join the Republican Party and use their influence toward continuing it along conservative lines. Major objections mentioned include the opposition of most of the Southerners to the civil rights position of the Republican leaders, and the fact that Republicans are still blamed by some in the South for the War between the States.

3. Conservative Republicans could join the Democratic Party and unite with Southern Democrats in an effort to direct the Party in the future along conservative lines.

Rightly or wrongly, there are some who believe that this latter course might have the best chance of accomplishment—and would thereby force the radical New-Fair Deal Democrats to form a new party, while the present Democratic Party would be the party of conservatives.

It is pointed out that the Democratic Party was started in the days of Thomas Jefferson as a States Rights Party and continued so until the advent of the New Deal in 1933.

To repeat, all this at the present time lies in the field of speculation. However, more and more people are considering what course to take if the radical New-Fair Dealers expand their control over the two present political parties.

If the New-Fair dealers get control of both parties, the conservatives would be banished to the political wilderness. And the voters, in elections, would have nothing to choose between in the way of policies and principles.

There are many conservatives who believe that the voters should be provided with a clear-cut choice between conservative principles—the kind under which the nation flourished to its present greatness—and radical New-Fair Deal principles—under which Big Government becomes bigger and the people's rights and liberty grow smaller.

These conservatives believe they would win a majority of elections if the issues are clearly presented to the people—and if proper candidates run for public office—and if the conservatives will really work for better Government.

### TAX FACTS #1 Selecting The Proper Tax Form

(This is one of a series of articles on federal income tax filing. The articles are based on information provided by the American Institute of Certified Public Accountants and the North Carolina Association of Certified Public Accountants, in cooperation with the Internal Revenue Service.)

If you are one of the millions of American taxpayers who spends the lion's share of his income feeding, clothing, housing and entertaining his family, chances are there is very little you can do to reduce your 1953 federal income tax bill—but you owe it to yourself to try.

First of all, decide which of the two individual tax forms you are going to use to report your income. If you choose the wrong one, you may automatically cut yourself off from a possible tax savings.

The easiest way to file is to use the simple 1040-A Form. It's a card the size of a check, on which you answer a few simple questions and have the choice of either computing your own tax or letting the Government do it for you.

You are permitted to use the card form if your gross income consisted only of wages, dividends or interest totaling less than \$10,000, and if you did not have more than \$200 of gross income apart from that listed on your W-2 withholding slips.

Before deciding to use the card Form 1040-A, you should consider these facts:

1. Your tax will be figured from a table which allows you a deduction of about 10 per cent of your income instead of itemized deductions for contributions, taxes, interest paid, medical and dental expenses, etc.
2. There is no provision in this form for filing as a "head of household," as a "surviving spouse" or for claiming special credits for dividends and retirement income.

If you are sure that these two points would not cost you any tax savings, and your income is within the limits for filing a Form 1040-A, you might as well use this simple card form.

Whether to Itemize  
When you elect to use the regular Form 1040, you still must

decide whether to itemize deductions or take the standard deduction which usually amounts to about 10 per cent of your income or \$1,000, whichever is less. Generally, you will save by itemizing deductions if you:

- (1) Own real estate
- (2) Had unusual medical expenses
- (3) Had deductible child-care expense
- (4) Suffered losses from fire, storm, accident or theft
- (5) Made fairly large charitable contributions

If you are supporting a dependent, although you are unmarried, you may be able to qualify as a "head of household" and figure your tax on a special table that gives you part of the advantage enjoyed by married couples filing joint returns.

You may qualify for a "head of household" status if you provide more than half the support of a parent, and more than half the cost of maintaining the parent's household even if the parent does not live with you. You cannot claim a "head of household" status if you file a Form 1040-A.

The 1040 Form is arranged again this year so that a taxpayer whose income was entirely from wages needs to use only the first one or two pages. Pages three and four are for other types of income and for computing the special credits for dividends and retirement income.

The instructions which come with your tax forms give further information on how to select the correct tax form. Help is also available from the Internal Revenue Service.

### SUNDAY SCHOOL LESSON

Continued from Page 7—Section 1

ed, only to change his motives and remain in that profession for the services he can render. For reasons of this kind we should not dismiss lightly the idea that men are often enabled to live better lives if they believe in their own continuance after the death of their flesh.

The first Christian experience was related to the fact of immediate experience of Jesus Christ after his death. It was a very personal thing, and it transformed men. Through this vital experience of a personal encounter with the Spirit that had been in Jesus they were convinced that God had announced to all generations the triumph of life over death. What this means for us is clear. We might say that God gave us life and for these few years it is being expressed through flesh. But Jesus had demonstrated that this is not the only way God can let men express their lives. There is that way which lies beyond death. This is a basic fact of belief for

Christians. The first Christians believed in immortality because they were sure of their association with One who had triumphed over death. What Jesus had obtained by way of victory was also obtainable for all who believed. The resurrection is a continuing process through which God lifts life from death and keeps sending it on its way. To know this, to see it, to feel it, to rejoice in it, is the basic concept of Christianity. But a continuance of life after death also carries with it a grave responsibility. Death will not destroy the fact of our various sins. We, ourselves, are responsible for the use to which we have put the God-given gift of life. Death, in itself, is not the end of our need for God and redemption.

Our lives, as we live them from day to day on this earth, expressed through our flesh, are involved in the process of becoming something which only death can make them. Death is our birth into immortality. Jesus is the Demonstrator of a fact. The church is the celebrator. When Jesus proclaimed: "In my Father's house there are many mansions" he held out hope

to mankind; hope, and a promise of better things to come for us, provided we earned those things. What an inspiration belief in life after death can be, for every one of us! How greatly it should refine our lives! How helpfully it should enable us to bear our burdens, enjoy our work; how richly it should endow our worship! After all, the God who could be trusted to bring us to earth in birth can surely be trusted to take us onward, through the birth of death, into immortality. In God's grace, that we should be worthy of it, should be our fervent prayer.

(These comments are based on outlines of the International Sunday School Lessons, copyrighted by the International Council of Religious Education, and used by permission.)

### Taylor Theatre Edenton, N. C.

Wednesday and Thursday, February 4-5—

ONE OF THE GREAT ONES!



STANLEY KRAMER  
presents  
TONY CURTIS  
SIDNEY POITIER

### THE DEFIANT ONES

Release by UNITED ARTISTS  
Friday and Saturday,  
February 6-7—

MIGHTIEST

of Pulitzer Prize  
winner A.B.  
Guthrie's  
mighty  
American  
saga!



THESE  
THOUSAND  
HILLS

COLOR by DELUXE  
CINEMASCOPE

STARRING  
DON MURRAY · RICHARD EGAN  
LEE REMICK · PATRICIA OWENS

STUART WHITMAN  
DIRECTED BY  
DAVID WEISBART · RICHARD FLEISCHER  
MUSIC BY ALFRED HAYES

Sunday, February 8—  
Jean Simmons and  
Rhonda Fleming in  
"Home Before  
Dark"

Monday and Tuesday,  
February 9-10—

Heaven or Hell...  
which will it be?



"I'll Give  
My Life"

If you enjoyed  
"A MAN CALLED PETER" and  
"TO CLIMB THE  
HIGHEST MOUNTAIN"...

Don't miss this  
Great Picture!

Matinee Monday 3:30 P. M.  
Night Show 7-8 P. M.  
NO ADVANCE IN PRICES!

Coming Feb. 11-12-13-14—  
Cecil B. DeMille's  
"The Buccaneer"

with Yul Brynner, Claire  
Blow and Charles Hallahan

### RECREATION CENTER PLYMOUTH, N. C.

Age Limit 19 Years and Under

During our Wednesday and Saturday  
dance we will have a Silver Dollar Draw-  
ing during the month of February.

All Boys and Girls 19 Years of Age  
and Under Are Invited.

No Alcoholic Beverages  
Allowed on Premises



86  
PROOF

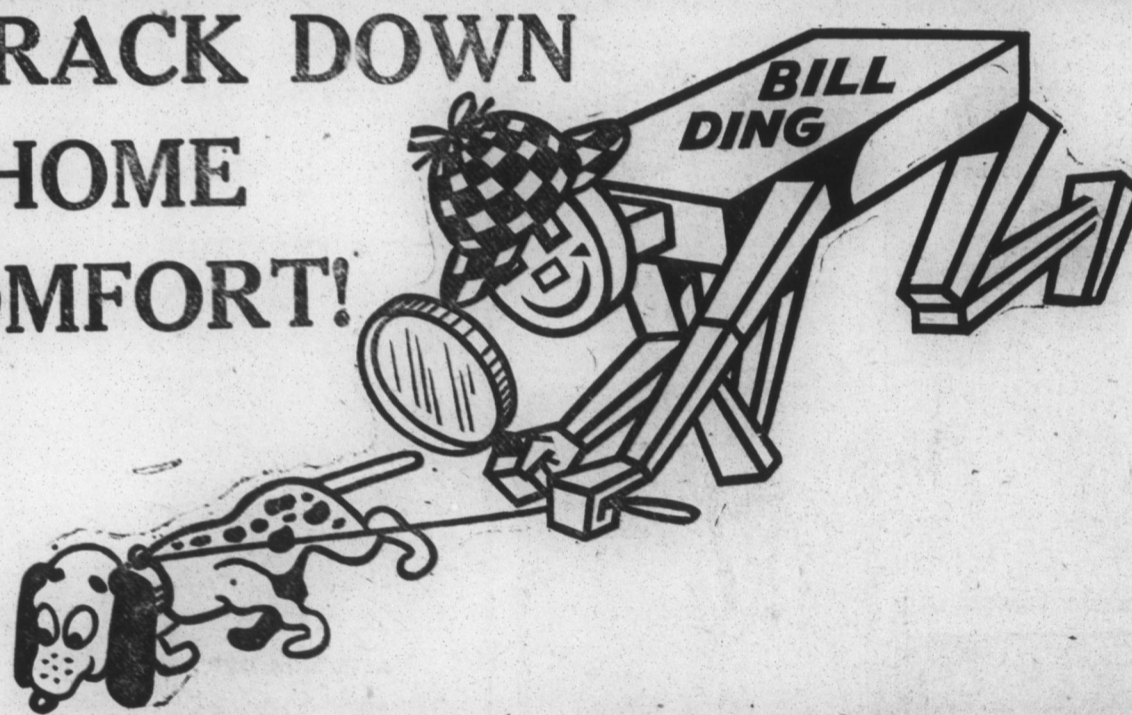
# Old Gold

Straight  
BOURBON  
Whiskey

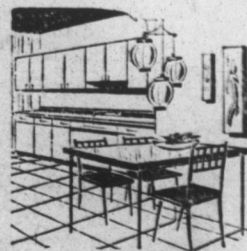
\$2.25  
PINT  
\$3.50 4/5 QUART

TYRONE DISTILLING COMPANY  
LAWRENCEBURG, KENTUCKY

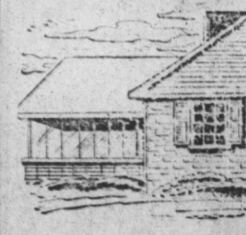
## TRACK DOWN HOME COMFORT!



SEE US FOR PLANS, MATERIALS AND  
EASY BUDGET TERMS!



JUST A SMALL AMOUNT  
MONTHLY can do wonders in  
bringing your kitchen up to date.  
No down payment necessary...  
Step in to see about it this  
week!



ENCLOSE YOUR PORCH  
to make it usable the year around!  
We'll be glad to explain the ease  
of paying for needed materials by  
the month... up to 5 years  
to pay!

## Come In And Investigate Our "TIME PAYMENT PLAN"

NO DOWN PAYMENT-UP TO 5 YEARS TO PAY

M.G. BROWN CO. Inc.  
LUMBER · MILLWORK  
BUILDING materials 2135-2136  
Highway No. 17 SOUTH · EDENTON, N.C.

## 5% New Car Loans

Peoples Bank and Trust Co.  
Consumer Credit Branch

210 South Broad Street

EDENTON, N. C.

Member F. D. I. C.



Here's why more than 2 million families place their insurance  
in the Nationwide basket:

**CONVENIENCE:** Your overall insurance planning is coordinated by an insurance counselor who knows you and your family—a skilled adviser who understands your family's needs and budget.

**ECONOMY:** Minimum cost is yours with Nationwide's traditionally low-cost plans for Sickness & Accident, Auto, Life, Fire and Theft insurance protection.

**SERVICE:** When you name a Nationwide Representative "my insurance man," you are assured the personal attention of a man from "The Company That Cares".

Phone the independent Nationwide agent nearest you. Let him show you how Nationwide can serve nearly all your insurance needs.



Joseph M. Thord  
Edenton  
Tel. 2429



NATIONWIDE MUTUAL INSURANCE COMPANY

home office: Columbus, Ohio  
Regional Office: Raleigh