

Family Night Held At Bethel Church

Family Night was observed at the Bethel Baptist Church Wednesday night. The program included special music and group meetings.

The following were in charge of the various group meetings: Woman's Missionary Union, Mrs. Mary Julian Long; YWA, Mrs. Ruby Davis; Intermediate GA's, Mrs. Wade Jordan; Junior GA's, Mrs. Mary Irwin Long; Baptist Brotherhood, Emmett Long with the Rev. J. O. Mattox as guest speaker; Intermediate RA's, Mr. and Mrs. Willis Proctor; Junior RA's, Mr. and Mrs. E. J. Proctor; Primary Sunbeams, Mrs. Elmer Proctor; Beginner Sunbeams, Mrs. Freeman Long.

and irresponsible political power," is described by Senator Goldwater (D-Ariz.) as the "most pressing and dangerous internal problem which we face in America today."

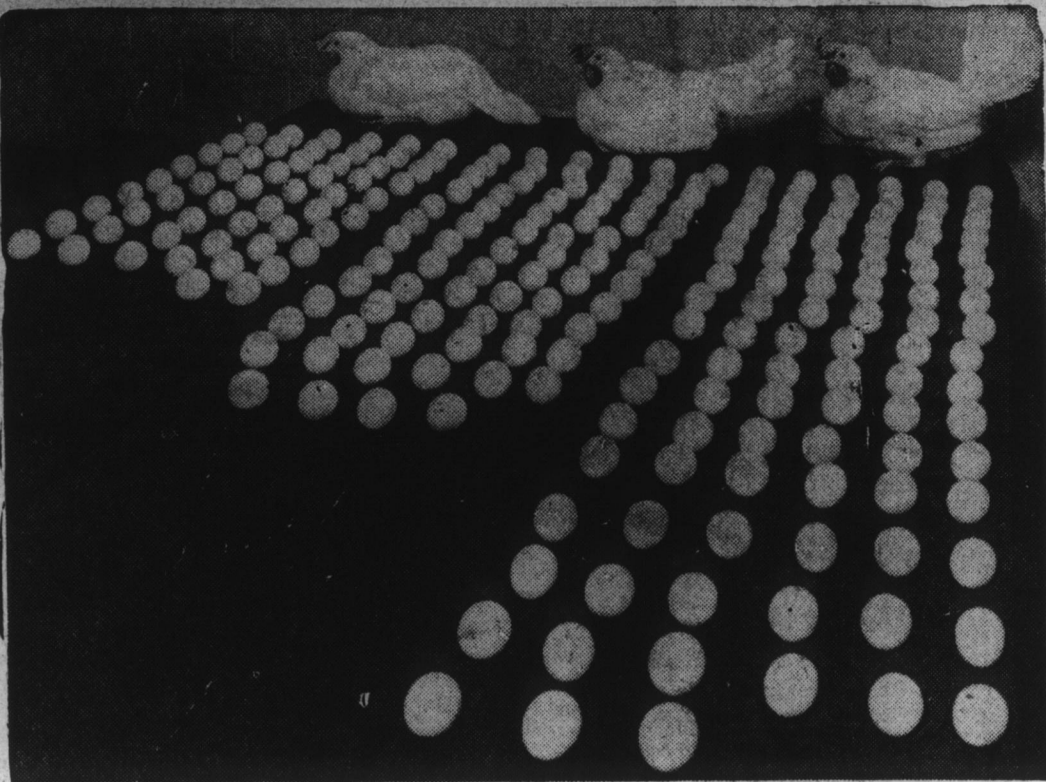
Senator Goldwater expressed his views in testifying before a Joint House Labor Subcommittee that he did not believe the Kennedy bill (D-Mass.) passed by the Senate would be "good for America."

The Arizonian, outspoken advocate of effective labor legislation, contends that the Senate-passed bill would not remedy the abuses spotlighted by the Senate Rackets Committee and would not strike at the actual "disease." Then he explained in detail what he meant.

"The disease I speak of," he said "is POWER, and nothing else."

"Power of the nature that allows Hoffa to threaten the entire nation and to issue this threat with impunity and the ability to carry it through without the law being able to touch him, and in fact, protecting him."

"Power that allows Al Haynes to uphold the expulsion of three of his members because they dared to speak out against a position of the union, exercising a right which the constitution recognizes as inherent but which



EGGSPLANATION—Difference between effects of duty, ambition and assistance on egg production is pictured, above, at the Elk River, Minn., research farm of a major feed manufacturer. In a 100-day test period, hen at left produced 56 eggs. Ambitious biddy, center, laid 76 eggs. Chicken at right is no dumb cluck. She was fed a special egg-egging formula that soon may be available in the market. Production: 99 eggs. U.S. hens, now producing some five billion dozen eggs annually, must produce an additional 1.8 billion dozen a year by 1975 to pace our growing population. So say the eggsperts.

the union denies.

"Power that allows Walter Reuther to carry on the brutal strike at Kohler, defying the clergy, the bar, and the public and even exerting that power in another state to prevent for three years the extradition of a goon who beat up a non-striker."

"Power that allows George Meany to openly tell the Congress of the United States just exactly what he will permit to be written into labor reform law and extending his dictates into the corridors and rooms of the Capitol where his lawyers wrote amendments to the labor bill."

"Power that allows COPE (the AFL-CIO Political Action Committee) to cross state lines to engage in politics in part with compulsory dues money taken from Republicans and Democrats alike in violation of the spirit of both

GARDEN TIME
M. E. Gardner
N. C. State College

A student brought me some rose foliage recently which showed distinct signs of nitrogen deficiency, expressed as a pale green leaf color. Roses are heavy feeders and should be fertilized once a month with an 8-8-8 fertilizer until about August 1.

Use 2 to 3 pounds per 100 square feet. Keep plants well mulched with pine needles, ground corn cobs or ground peanut hulls, and thoroughly sprayed, or dusted, to protect against insect and disease pests. Irrigate as needed.

collards. This should be done between June 15 and July 1 for the Piedmont area.

Sow the seed in flats and place them in light shade where they can be easily watered. A good mixture is one-third peat moss, one-third clean sharp sand and one-third good garden soil (or well decomposed compost), by volume. To prevent "damping-off" fungus, the sand and soil should be sterilized. This can be done by heating in an oven for one hour at 210 degrees.

When the plants are large enough to handle, it is desirable to transplant them to bands, or small pots, using good garden soil or compost, as suggested. Setting in the field from bands or pots practically eliminates the shock of transplanting and will hasten maturity of the crop.

the Taft-Hartley and the Corrupt Practices Acts.

"Power that flaunts the laws of the land and scorns the rights and prerogatives of the people."

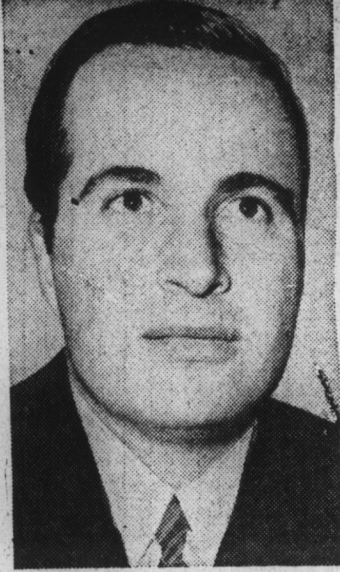
"Power that is denied, and properly so, to other segments of our society, but which is used by labor leaders with the knowledge they are protected by law and that their strength in Congress insures the continuance of those laws."

Explaining that under compulsory unionism, "corrupt leaders hold a clear-cut power of economic life or death over their members," Senator Goldwater added:

"Now let us take this compulsory unionism and go one step further—and it is a step which

has already been taken. Let the union official take the overwhelming economic power he holds and transform it into compulsory political support of any party, faction of a party, candidate or issue as chosen by the union official. At a single stroke the union official can transform the union dues originally collected for economic purposes into a war chest for political purposes limited only by the size of the union treasury.

"Every union member under such a compulsory system must continue to support such political activities with his union dues. Failure to pay dues as grounds for expulsion from the union, followed by black-listing on every union job. A union member can be



IKE'S CHOICE—Ogden R. Reid, above, has been named by President Eisenhower to be United States ambassador to Israel. The former newspaper executive faced questioning under the Senate's intensified investigation of appointments of noncareer diplomats before voting approval.

deprived of employment opportunities by his union official for refusing to pay political assessments, or dues which would be used for political purposes."

The books a person reads reflect his ambitions, desires, tastes, pleasures and secret inclinations.

SUNDAY SCHOOL LESSON

great need today for trained ministers; directors of religious education; workers with children, youth, and adults; missionaries with varied skills to work in our own country and in many parts of the globe; administrators of homes, hospitals, educational institutions; editors and printers of books; and other full-time workers. In addition, the work of the church is heavily dependent upon a vast army of faithful volunteer leadership. Whether we think in terms of full-time service in the church or volunteer leadership, the qualities are the same. The essential difference is the time invested, first for training, then in work. No person should work in the church except as he feels himself in special relationship to God. He must be aware that the service he is rendering is given in the name of God and to forward the program of God.

We speak easily of our country being a Christian nation. We devoutly hope that it will increasingly be a Christian nation. But what do we mean by

this term "Christian"? If by it we mean that Christian principles are the test of our legislation, national policy, and international relations, then we are correct in our use of the term. If by it we mean that a majority of our people are members of the Christian faith, then the term loses much of its significance. Not only our people, but the nation AS A NATION must be Christian. How can we make or keep it so?

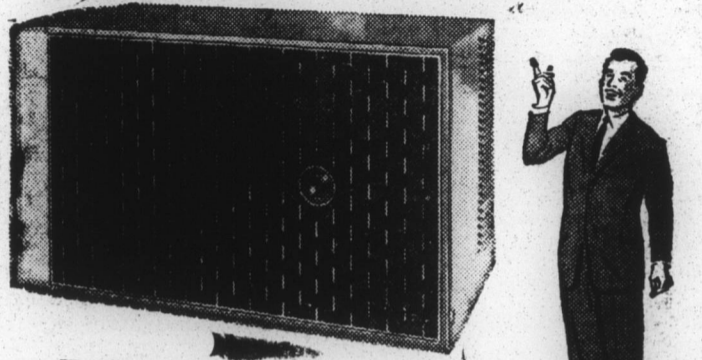
We can begin by electing to office men of high quality who have accepted great religious principles as the guiding rule of their lives. We hold before them

the highest interpretations of religious principles and encourage them as they stand valiantly for what is right. We encourage them to draw upon divine resources. It is a wholesome sign that leaders in Washington and in our state capitals are not ashamed of church attendance and membership. Prayer groups are not uncommon, and reference to religious principle is made more openly than it once was.

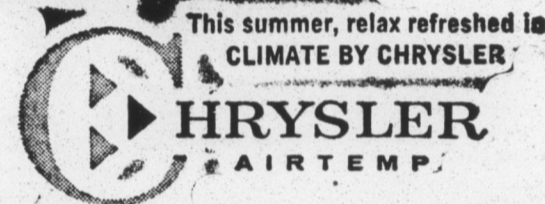
We let them know that men can serve God as faithfully through political office as others do through service in the church. Theirs is a Christian vocation if they will make it so.

THE FIRST ROOM AIR CONDITIONER THAT THINKS!

New Chrysler Royal Slender



- Automatically, constantly balances temperature and humidity!
 - Wrings out sticky moisture ordinary air conditioners miss!
 - Brings you Spring freshness... all summer long!
- Complete with super-silent night cooling control, vent and exhaust fan, dual filters. Up to 10,000 BTU capacity. Also available in new High Power and Built-In models.



See it today... enjoy perfect comfort tomorrow!

Edenton Ice Co.
Phone 2223 Edenton

No Comment

By JAMES W. DOUTHAT
Assistant Vice President, Government Relations Division of the National Association of Manufacturers

"NO COMMENT" is a report of incidents on the national scene and does not necessarily reflect NAM policy or position.

Washington, D. C.—The "coercive power of compulsory unionism, transformed into a massive

Announcement!

We are pleased to announce that Jessie (Tony) Miley, a graduate of the University of North Carolina School of Pharmacy, is now employed by Leggett & Davis, Inc. You are invited to come in and meet him.

In town for summer!

If you've spent most of the summer, you'll love these dark cottons so enchantingly styled by L'Aiglon! What's more, they'll do yeoman duty on week-ends or vacation too! Left, Sleeveless bodice circled with tucks and lace over a big drifty skirt. Right, Great-skirted shirtdress with bodice of cool eyelid embroidery. Both: black and dark brown — sizes 8 to 18.

Each, \$17.95

L'Aiglon



Samovar 100 PROOF VODKA



2.50 PINT

3.90 4/5 QT.

DISTILLED FROM GRAIN, SCHNEISE DIST. CO., N.Y.C.

SWING-OUT SHELVES

hand you the food



GENERAL ELECTRIC 12-CUBIC-FOOT REFRIGERATOR-FREEZER
Automatic Defrosting Refrigerator, Big Zero-degree Freezer at top

MODEL BH-12S

- 3 Swing-Out Shelves are adjustable, removable
- Twin Porcelain Vegetable Bins
- New Ice-Ejector Trays and Ice Storage Container
- Available in White and Mix-or Match Colors

STRAIGHT-LINE DESIGN (No coils on back)

ONLY

\$419.95

WITH TRADE

Quinn Furniture Company
Edenton, N. C.