

**20 YEARS AGO**

Continued from Page 1, Section 1

they had a 200-pound cow sturgeon, caught in Albemarle Sound.

According to a report of the Bertie-Chowan District Health Department, Negro births in Chowan County were 20 and white births 13 for the month of August.

Directors of the Edenton Rotary Club were breakfast guests of Mr. and Mrs. H. A. Campen, Mrs. N. J. Hollowell, 70 years old, was a patient in the Albemarle Hospital as the result of a serious accident at her home when she tripped over a piece of wire in her back yard, breaking a leg and an arm.

Over 50 Esso dealers and distributors from the Albemarle and Washington districts met at Hotel Joseph Hewes to consider an extensive newspaper campaign inaugurated by the Standard Oil Company.

**Elementary School Lunch Room Menu**

Menus at the Edenton Elementary School lunch room for the week of September 25-20 will be as follows:

Monday: Weiners, weiner rolls, toss salad, baked beans, emon custard, milk.

Tuesday: Spaghetti with meat balls, candied yams, carrot sticks, corn bread, apple pie, butter, milk.

Wednesday: Corned beef, corn bread, steamed cabbage, fruit cup, spiced beets, butter, potatoes, milk.

Thursday: Roast turkey, turnip greens, giblet gravy, fruit jello, creamed potatoes, milk, cranberry sauce, butter, school baked rolls.

Friday: Tuna salad, potato sticks, toss salad, school baked rolls, garden peas, apricots, butter, milk.

**Revenue Office**

**Moving To Hotel**

James M. Johnston, revenue collector for the N. C. Department of Revenue for the Edenton district, announces that the local office is being moved from the Citizens Bank Building to Hotel Joseph Hewes.

Due to the process of moving, Mr. Johnston states that no business will be transacted through his office until Monday, September 25.

**Another Cancer Clinic October 6**

The Northeastern Cancer Clinic will be held on Friday afternoon, October 6, with registration beginning at 1 o'clock. A chest X-ray will be given to anyone wishing it along with the examination of the five areas of the body where cancer is most easily found and cured.

There are no limitations as to sex, race, physical or economic status at the center. However, women should be 35 or more; men should be 40 or over unless referred by a doctor, or unless one of the "Seven Danger Signals" or "Symptoms" are present.

Only 30 people can be seen at the Center each month due to limited facilities, so it is suggested that anyone who wishes to be assured of an appointment should write the Cancer Center, Health Department, Elizabeth City, N. C., for a priority. Examinees are asked to bring a robe or housecoat with them.

**New '62 Ford Goes On Display Sept. 29**

Bruce Jones, manager of the Albemarle Motor Company, announces that the new 1962 Ford automobiles will go on display in the company's showroom on West Hicks Street Friday of next week, September 29. The general public is cordially invited to inspect the new models which are beautifully built to the highest quality standards.

"Ford is ahead in value for 1962," says Mr. Jones. "See it, drive it and buy it. We will be looking for you at our showroom Friday and Saturday of next week."

Door prizes and refreshments will be served during the showing of the new Ford models.

**'62 Chevrolet Trucks Are Now On Display**

Nick George, manager of the George Chevrolet Company, announces the showing of the new 1962 Chevrolet Jobmaster trucks. New models include various series which are adaptable to any kind of work.

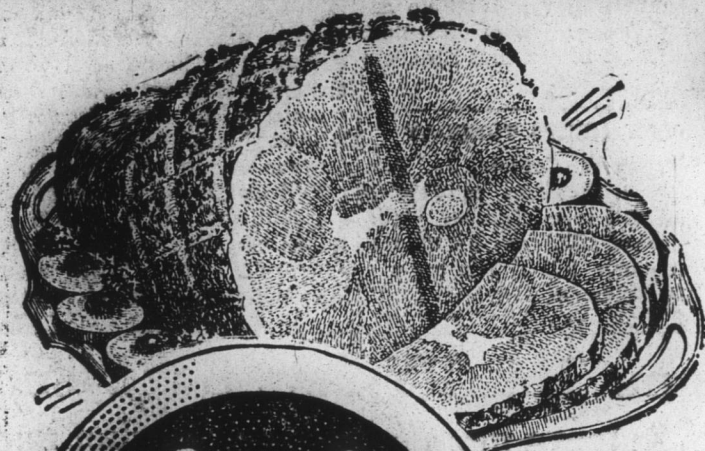
"Every model is built to out-haul, outlast and out-value any other truck," says Mr. George. He invites the general public to see the new models at the showroom on North Broad Street.

**No Limit At Your A&P! Super-Right Short Shank**

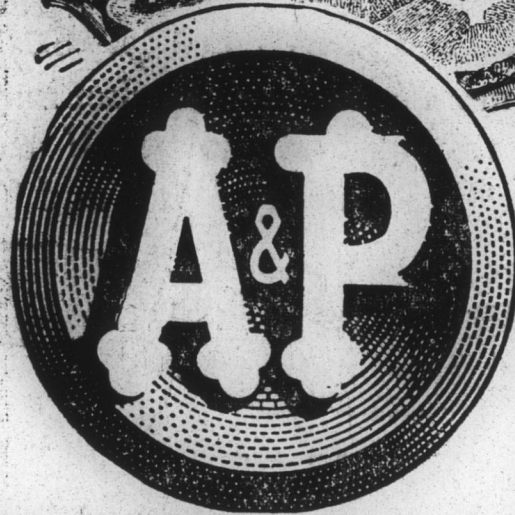
**SMOKED HAM**

PRICES IN THIS AD ARE EFFECTIVE THROUGH SEPTEMBER 23rd

**SHANK PORTION 33¢**  
per lb.  
CENTER SLICES ... lb. 85c



Butt Portion ... lb. 43c Half or Whole Hams 12-16 lb. avg. lb. 45c



"SUPER-RIGHT" DELICIOUS ALL MEAT **FRANKS** 1-LB. PKG. **45¢**  
"SUPER-RIGHT" SLICED BEEF **LIVER** per lb. **35¢**

WESTERN GROWN SWEET, RED TOKAY

**GRAPES 2 lbs. for 25¢**

Western Bartlett Pears 2 lbs. 29c

White Potatoes 25 lb. bag 69c

Fresh Idaho Prunes 2 lbs. 25c

**EIGHT O'CLOCK COFFEE**

1-Lb. Bag	3-Lb. Bag
51¢	\$1.49

Jane Parker PINEAPPLE

**PIES** Each **39¢**

Ann Page Specially Priced **SALAD DRESSING** 45c • Jane Parker Large Family Size **PEACH PIES** each 53c

MEL-O-BIT PROCESSED AMERICAN, PIMIENTO OR SWISS **CHEESE SLICES** 2 6-OZ. PKGS. **39¢**

YOUR CHOICE! YELLOW CLING HALVES OR SLICES **IONA PEACHES** 2 NO. 2 1/2 CANS **45¢**

ANN PAGE CREAMY SMOOTH **Peanut Butter** 24-OZ. JAR SPECIAL **55¢**

**MIX 'EM OR MATCH 'EM**

- IONA PEAS AND CARROTS
- A&P GREEN LIMAS
- A&P ORANGE JUICE
- Sultana WHOLE TOMATOES
- Sultana Whole GREEN BEANS
- SPAGHETTI Prepared With Cheese Sauce

MIX 'EM OR MATCH 'EM **6 \$1.00** CANS FOR

**NOW AT A&P YOU CAN GET BEAUTIFUL WATCHES**

**\$7.95**

Each Plus Tax and \$39.95 in A&P Cash Register Tapes

EACH WATCH CARRIES A TWO YEAR SERVICE CERTIFICATE — 4 STYLES TO CHOOSE FROM.

**ONE DOLLAR EXTRA TRADE-IN ALLOWANCE!**



CLIP OUT AND BRING IN FOR SPECIAL ALLOWANCE

14 DAYS ONLY! This extra \$1.00 offer is in addition to bigger-than-ever trade-in allowances being made right now. These are tires to fit every type of car, including compact and import models... and prices to fit every pocketbook.

BUDGET TERMS BUY NOW—PAY LATER!



**RIDE THE KELLY ROAD**  
WE ARE SELLING NEW TIRES FOR THE PRICE OF NEW RECAPS SEE US TODAY

for Worry-free Driving... **KELLY Springfield TIRES**  
**SCOTT TIRE & RECAPPING CO.**  
MAIN PLANT EDENTON  
EDENTON PHONE 2888 E. CITY PHONE 7818

- JOY LIQUID**  
12-Oz. Can 37c 22-Oz. Can 63c
- OXYDOL**  
Lg. Pkg. 35c Gt. Pkg. 85c
- TIDE**  
Lg. Pkg. 34c Gt. Pkg. 81c
- CHEER**  
Lg. Pkg. 34c Gt. Pkg. 81c
- DASH DETERGENT**  
Lg. Pkg. 39c Gt. Pkg. 79c
- COMET HOUSEHOLD CLEANSER**  
2 Reg. Ctns. 31c  
2 Lg. Ctns. 47c
- SPIC & SPAN**  
Lg. Pkg. 29c Gt. Pkg. 89c
- ONE CENT SALE ON WOODBURY**  
Beauty and Deodorant Soap  
YOU PAY 4 Bar Pkg. 33c
- 10 CENT OFF LABEL SWAN LIQUID DETERGENT**  
22-Oz. Can You Pay Only 53c
- A&P Frozen Concentrated ORANGE JUICE**  
6 6-oz. Cans in A Ctn. **99¢**