

## Dr. Brank Proffitt Discusses Merit Rating At Schoolmasters Club Meeting Monday Night

Dr. Brank Proffitt told more than 100 persons at the Albemarle Schoolmasters Club meeting Monday night the merit rating of teachers study ordered by the N. C. Legislature is an experimental program and not a catchall.

In conducting the study, Dr. Proffitt said, "We would like to find out in actual school relations what the problems are, what our approach might be to these problems, find out whether or not they are insoluble and discover whether or not the merit pay program in North Carolina will improve education."

"We are not going to point the finger at anyone," Dr. Proffitt declared. "We are trying to see whether or not we can recognize superior performance (teaching) and reward it. But keep in mind, this is an experimental program."

The speaker has been named director of the Merit Rating Study and he announced the "practical approach" will be used in the survey. "We plan to go into three administrative units, three school systems which we hope and believe are representative, there to begin experimental pilot programs," he said. "We shall obtain records and take note of results in order that we might present evidence of the value, or lack of value, of such a program to a school system. We think this approach has excellent possibilities."

The study is designed to obtain answers to the questions: Is it desirable to relate superior performance (teaching) to salary; can a criteria be devised to make such a program worthwhile and good for the school; can superior performance of the teacher be related to salary with beneficial results. Dr. Proffitt emphasized the state does not intend tailoring a program on a state level and telling a school system "this is it."

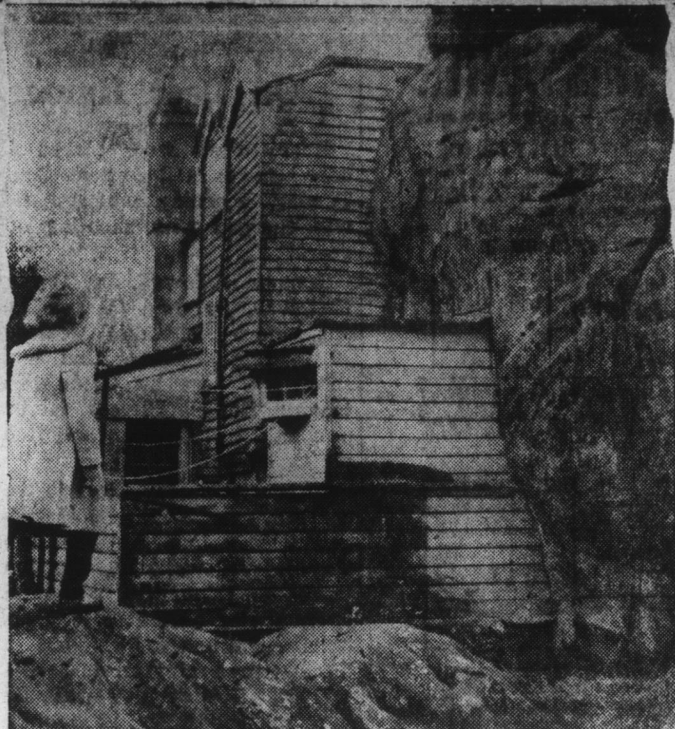
"Some of the tough problems associated with the study were listed by the speaker as getting and retaining an objective attitude about this problem; keeping before the teachers and laymen the fact this is an experimental program; the human factor of social and emotional problems, and the nature of public employment.

"I feel this is a challenge to the teaching profession in this state," declared Dr. Proffitt. "The Legislature has said try this thing out, produce the evidence. I think we have an opportunity to explore problems of real concern to us."

"Taking all things into account, we want you to see about devising a criteria to judge teaching performance and see how this can be related to salary," the speaker said. He announced that Rowan County and Gastonia city administrative units are two of the three systems which have been approved for this study. One more will be selected.

With Edenton as host school for the meeting, Principal Cecil W. Fry of John A. Holmes High School, welcomed the club members and Superintendent Hiram J. Mayo recognized special guests. The invocation was given by the Rev. Hugh Evans and special music was rendered by a choral group from the high school under the direction of Miss Suzanne Hardison. Arrangements for the meeting were under the supervision of Mrs. David Holton and a delicious dinner of country ham was prepared and served by home economics students at the school under the direction of Mrs. Daniel Reaves, teacher.

The business meeting of the Schoolmasters was presided over by the president, S. C. Chandler. Superintendent John Moore of Pasquotank presented proposed changes in the constitution which will be voted on by the organization at their February meeting in Sunbury. Representatives from two city units and 10 counties were in attendance.



**SOLID FOUNDATION**—A young girl climbs over rocks to reach an unusual house near Tunbridge Wells, Kent, England. The house was built into solid rock.

## E. W. Spires Dies Suddenly Monday

Continued from Page 1—Section 1

The Superior Court, Mr. Spires served as Clerk of Court for 17½ years and due to his health he declined to seek re-election in 1958. He was mayor of Edenton for two terms from 1933 to 1937 during which period sanitary sewerage lines, were laid in North Edenton, the mill village and many of the cross streets with WPA funds. It was under his administration that the town sponsored a WPA project for the construction of the Edenton armory. Prior to being elected mayor he served as a Town Councilman. In 1933 Mr. Spires was elected president of the Albemarle Sound Bridge Association which organization worked in close cooperation with State Highway Commissioner Julian Wood in carrying out the fight for a bridge across Albemarle Sound which was completed in 1937, thus connecting the north and south Albemarle counties. Mr. Spires also took a leading part in securing the bridge across Chowan River which linked the Albemarle area with the mainland of North Carolina.

At the time of his death he was chairman of the official board of the Methodist Church and president of the Cupola House Association. He was a past-master of Unanimity Lodge No. 7, A. F. & A. M., and a past Grand Historian of the Grand Lodge of North Carolina. For many years he was secretary of the Edenton Fire Department. He was very active in religious, civic, and political circles for many years, being always ready to give of his time and efforts in any phase of community affairs which had for its purpose the betterment and progress of Edenton and the entire Albemarle area.

Surviving are his wife, Mrs. Hazel Jacobs Spires, a daughter, Mrs. Margaret Spires Stanton of Plymouth; a sister, Mrs. Sadie M. Midgette of Norfolk, and a grandson, Eddie Stanton.

A funeral service was held in the Methodist Church Wednesday morning at 11 o'clock. The pastor, the Rev. Van Crawford officiated and burial was in the Beaver Hill Cemetery.

## LIONS MEET MONDAY

Edenton's Lions Club will meet Monday night, January 15, at 7 o'clock at the Edenton Restaurant. President John Mitchener requests every member to attend.

## Negro Home Demonstration News

By MRS. ONNIE S. CHARLTON, County Negro Home Economics Agent

### Meetings Next Week

Jan. 15—Paradise Road Community, St. Luke's Church at 7:30 P. M.

Jan. 16—Edenton HD, Mrs. E. C. Cox, 8:00 P. M.

Jan. 18—Ryans Grove HD, Miss Nora Drew, 7:00 P. M.; Ryans Grove Community, Mr. and Mrs. Ernest Drew, 8:00 P. M.

Jan. 19—County Council of Home Demonstration Clubs, office, 2:30 P. M.

### From The Tarheel Food Shopper 1962 Food Outlook

In 1962, we again expect a larger volume of food available for consumption than was available in 1961. This will include greater variety and new forms, and many foods will be more available than they have been in the past.

With an increase in population, of one and one-half per cent, retail food prices for this year have averaged about two per cent above the same period of 1960.

With average growing condi-

tions, production of food from crops should be about the same in 1962 as it was in 1961. Livestock production, however, is expected to continue the uptrend through 1962.

Meat production in 1962 probably will increase. Little change is expected in 1962 average retail prices for meat over the 1961 level.

The supply of beef and pork will continue to increase slightly in 1962. Prices of quality beef cuts, ground beef, economy cuts will be lower during the last half of 1962. Pork prices will remain at about the same level as last year.

Broiler supplies in 1962 are expected to be about equal to 1961. Prices will be about the same as in 1961.

The turkey crop may be down somewhat from 1961, but the carryover of frozen stocks into 1962 will be well above a year earlier.

Egg production in 1962 is expected to be higher and prices lower than 1961.

Supplies of all food cereals will continue large, and the upward trend in retail prices of cereal food products should continue in the coming year.

Supplies of total canned fruits for the 1961-62 marketing year are expected to be moderately larger than a year earlier because of increased carryover stocks held by canners and the probable record-size pack. Canned peaches, fruit cocktail, cherries and purple plums are expected to be in greater supply. Fruit juice, especially frozen orange juice, is expected to be available in larger volume in 1962.

Retail prices of most processed vegetables and fruits are expected to be a little higher due to increased processing and distribution costs. Retail prices of some of the fresh fruits probably will not average as high this fall and winter as in these seasons of 1960-61.

The product line of dairy products has doubled since World War II. Most of the increase has occurred in products low in milk fat and high in nonfat solids. The use of milk fat is at an all time low. These trends are expected to continue in 1962.

There will be plentiful supplies of food in the next 3-5 year period, however, prices may not decline because of increased marketing costs.

## 115 Receive Old Age Aid In December

Mrs. J. H. McMullan, superintendent of public welfare, reports that during December 115 persons in Chowan County received old age assistance, with \$4,505 being distributed. There were 28 cases of aid to dependent children, who received \$1,957; 43 cases of aid to permanently and totally disabled received \$2,297 and 11 aid to blind cases received \$404.

Other assistance cases included five cases hospitalized in the county, \$710.60, of which the county's part was \$246.60; four cases hospitalized outside the county, \$50.40 and five cases of assistance amounting to \$67.46.

TRY A HERALD CLASSIFIED

## Elementary School Lunch Room Menu

Menus at the Edenton Elementary School lunch room for the week of January 15-19 will be as follows:

Monday: Hamburgers, gravy, steamed rice, sliced peaches, milk, blackeye peas, butter, school baked rolls.

Tuesday: Vegetable beef soup, crackers, pineapple upside-down cake, peanut butter sandwiches, milk.

Wednesday: Roast turkey, turnip greens, giblet gravy, apple sauce, creamed potatoes, milk, cranberry sauce, butter, school baked rolls.

Thursday: Spanish rice with beef, school baked rolls, garden peas, milk, butter, chocolate pudding.

Friday: Fish sticks, apple pie, cole slaw, buttered corn, cornbread, butter, milk.

## Mrs. Forehand New Woman's Club Head

Continued from Page 1, Section 1

and Phyllis Twiddy.

The Aces have had a balanced scoring attack: Jay Ross 10.2, Herb Adams 9.9, Wayne Griffin 8.9, Richard Hollowell, 8.7 and Jimmy Dail 7.7. The team has hit 122 out of 303 shots for an

overall shooting percentage of 40.3. Plus this excellent team, the Aces have gotten real good rebounding. The leader in this department is Wayne Griffin, who is averaging 11.6 rebounds per game. Cecil Fry and Dickie Cobb have been filling in capably as reserves.

Coaches Sally Lytch and Paul Stanton have been pleased with their teams' play, but they both feel that the game Friday night will go a long way in determining the success or failure of their clubs to be title contenders.

The girls' game Friday night will begin at 7 o'clock and the boys will go into action immediately following. It is hoped a large crowd of fans will turn out for these games.

## Conference Standing

Girls:  
Edenton 2-0  
Anoskie 2-0  
Williamston 1-1  
Plymouth 1-1  
Scotland Neck 0-2  
Hertford 0-2

Boys:  
Edenton 2-0  
Anoskie 2-0  
Scotland Neck 1-1  
Williamston 1-1  
Plymouth 0-2  
Hertford 0-2

He dwells nowhere that dwells everywhere. —Martial.

# Edenton Furniture Co. Chromcraft DINETTES

## SPECIAL Car Load DINETTE SALE



1. Table tops that open easily.
2. Marlex glides to protect floor.
3. Chair seats that hold their shape.
4. Finishes that will not rust.
5. High pressure table tops.
6. Heaviest gauge steel.
7. Chair backs of solid lumber.
8. All-vinyl foam seats and backs.

WARRANTY BY Edenton Furn. Company  
CHROMCRAFT AND SEAL OF APPROVAL OF GOOD HOUSE-KEEPING.

Inlaid or Plain Top with self-edging!  
INCLUDES EXTENSION LEAF 36" x 45" x 60"

## SPECIAL CARLOAD PRICES START AT \$59.95

- 5-Pc. GOLD-N-BRONZE TAN WOOD GRAIN DINETTE. Mar proof plastic top and 4 thick cushion chairs ----- \$ 59.95
- 5-Pc. BRONZETONE EXTENSION DINETTE with Extra leaf — Beautiful wood grain marproof top ----- \$ 79.95
- 7-Pc. BLACK-N-BRONZE 36" x 60" EXTENSION DINETTE. Marproof — charcoal plastic top. Extra leaf included ----- \$ 89.95
- 7-Pc. GOLD-N-BRONZE 36" x 60" EXTENSION DINETTE. Choice of Dark Arabian Walnut or light walnut plastic top ----- \$ 99.95
- 5-Pc. MARBLE WALNUT INLAID OVAL 36" x 72" DINETTE. Self edged walnut apron— shown directly above ----- \$119.95
- 7-Pc. SELF EDGED WALNUT OVAL 36" x 60" DINETTE. Inlaid marble plastic top — Two leaves, 6 comfortable chairs ----- \$129.95
- 9-Pc. LIGHT or DARK WALNUT WOODGRAIN 36" x 72". 2 leaf Ext. Dinette and 8 Foam cushioned plastic chairs ----- \$149.95

**\$5 Delivers Your Choice!**  
Easy Terms After Small Down Payment  
**Edenton Furniture Co.**  
"THE BIG STORE ON BROAD STREET"

# Redi-Hung Aluminum Combination STORM DOORS

America's Finest Do-It-Yourself ALUMINUM COMBINATION DOOR

All Holes Pre-Punched and Drilled No Cutting — No Drilling

ANY HOME OWNER CAN INSTALL IT

# \$29.95

Two Glass and Two Screen Panels ALL NECESSARY HARDWARE INCLUDED

Installation Can Be Made for Small Extra Charge

ALUMINUM COMBINATION STORM WINDOWS \$12.95

**M. G. BROWN CO., INC.**  
Phone 2135 Edenton, N. C.

**WHAT COULD BE EASIER?**

Just relax! Let Want Ads do the job for you. It pays to use the Want Ads when you want to sell, rent or buy. It pays to read the Want Ads... for bargains, opportunities galore.

The Chowan Herald