

AROUND THE FARMS IN CHOWAN COUNTY

By C. W. OVERMAN, Chowan County Agent

Prune—Don't Shear! John H. Harris, our Extension Horticulture Specialist, says if all the hedge shears were dumped in the ocean our plantings would soon look a hundred percent better. You can't prune with hedge shears—you can only shear. Shearing is all right for a formal clipped hedge, but it's terrible for other type plants.

How To Prune: Plants have character. Each species is different—some are low and spreading, some round, others tall and spreading. Prune to bring out the plants' character—keep the plant natural looking, when you finish pruning, except for size, you shouldn't be able to tell the plant has been pruned. If you have large overgrown foundation plants, cut them off near the ground or pull them out and replace with dwarf, slow growing plants.

If you are going to shear all your plants round, flat or square you might as well plant cheap privet hedge. All the plants will look alike anyway. Better still why not mold a plant from aluminum, paint it green and solve all your pruning, fertilizing and watering problems.

When pruning plants like Chinese holly and ligustrum, make your cuts inside the plant. Don't clip the small twigs. This will make the plant too thick. New growth puts out just below a cut, therefore, stagger your cuts throughout the plant. If you need growth near the ground (mandiana for instance) cut some stems near the ground.

Keep the plant open enough for light to enter. If it gets too thick on the outside all foliage will die on the inside.

Boxwood are an exception, but even boxwood need not be sheared. Use a knife or clippers to remove the longer branches. Make the cuts slightly inside the plant and leave the shorter branches unpruned.

When To Prune: Do light pruning any time. If heavy cutting back is necessary do this in early spring just before growth starts. If blossoms are important prune heaviest when plants finishing blooming.

New Vegetable Varieties: You will probably be hearing a lot about the many "new" vegetable varieties that are available this year. The varieties listed below have been tried, tested and proven to be good. You might, however, like to make a small trial planting of such new varieties as: Manapal and Campbell 146 tomatoes (resistant to cracking and Fusarium wilt); Nugget sweet potato (resistant to wilt, high quality and yields); Seminole cantaloupe (resistant to downy mildew), and Harvester snap bean (white seeded, high quality and high yields). Seed of these varieties may be scarce in 1962 but they may be worth your effort.

Plan to grow one "new" vegetable this year. Some suggestions are shallots, Chinese cabbage endive, head or leaf lettuce.

New Zealand spinach, acorn of butternut squash, asparagus, edible soybeans and chard.

20 YEARS AGO

Continued from Page 1, Section 1

about tires and tubes. Edenton Boy Scouts were guests of the Edenton Rotary Club at a banquet held at the Parish House.

Mrs. J. N. Pruden, Chairman of the Chowan County Red Cross Chapter, announced that a course in home nursing would be held and that Mrs. Roland Vaughan would be in charge of the classes.

The Bank of Edenton published the best report in its history with deposits totaling \$2,094,903.35 and loans and discounts \$1,266,173.83.

R. C. Holland, speaking at a Lions Club meeting, told about a proposal to collect scrap metal, especially on farms, to be used in making defense material.

Scoutmaster C. W. Overman reported that Boy Scout Troop No. 156 had collected 5,000 pounds of paper, to be used in the war effort.

J. C. Nixon was summoned to appear at Recorder's Court because he sent his children to Chowan High School instead of the new Rocky Hock Central School, which supplanted three schools scattered about the Rocky Hock section.

Twenty-eight Edenton Boy Scouts enrolled in a junior Red Cross first aid training course.

Mrs. J. N. Pruden, Sr., chairman of the Chowan County chapter of the Red Cross, received a call for knitted garments for the county's armed forces. Mrs. Mattie Davis and Mrs. E. T. Rawlinson were named co-chairmen of the local knitting forces.

According to a 10 per cent blanket increase in 1942 tobacco allotments, Chowan County's tobacco allotment was raised from 561.3 to 618.4 acres.

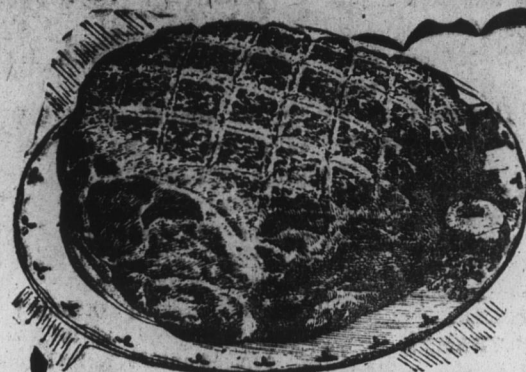
Farmers Urged To List Crop Reports

Continued from Page 1, Section 1

Although in most counties the farmers made their report to the township tax listers, the law prohibits the use of this information in any way as a check against the farmer's personal and property taxes. The information reported by farmers is kept strictly confidential and is available only to the landowner who makes the report.

Farmers can save time both for themselves and the listers by making some notes in advance as to: (1) How they used their total farmland acreage in 1961; (2) Acres of each crop harvested during 1961; (3) Numbers of brood sows, milk cows, beef cows, and hens and pullets as of January 1, 1962.

TRY A HERALD CLASSIFIED



"SUPER-RIGHT" SHORT SHANK

Smoked

PICNICS

WHOLE 4 to 6 Lb. Avg. **33c** HALF 2 to 3 Lb. Avg. **35c** SLICED HALF LB. **39c**

YOUNG FRYER LEGS

SWIFT PREMIUM FROZEN **2 1/2 LB. BOX 89c**

JANE PARKER Angel Food

Large Ring Cake **39c**

Peach Pie

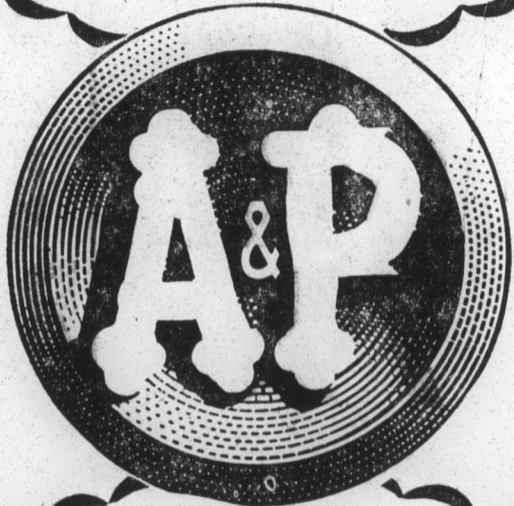
Only **49c**

WHOLE WHEAT BREAD

2 1-Lb. Loaves **33c**

Potato Chips

8-Oz. Pkg. **37c**



SWEET JUICY TEMPLE ORANGE **2 LBS. 19c**

MOUTH SMACKING YORK APPLES **4 LB. BAG 39c**

U. S. NO. 1 REGULAR WHITE, IRISH

POTATOES

25 LB. BAG 59c

FLORIDA GROWN, JUICY PINK MEAT GRAPEFRUIT **5 LB. BAG 29c**

GOLDEN MEATED RUTABAGA TURNIPS **LB. 5c**

PRICES IN THIS AD ARE EFFECTIVE THROUGH JANUARY 20th

ANN PAGE PEANUT BUTTER

12-OZ. JAR **31c**

BABY TRAINING CUPS

Ea. **25c**



A&P BRAND CONCENTRATED, FROZEN

ORANGE JUICE

6-Oz. Cans **2 • 33c**

MACARONI AND CHEESE OR SPAGHETTI AND MEAT, FROZEN MORTON CASSEROLES **6 8-Oz. Pkgs. \$1.00**

A&P STRAWBERRIES

1-Lb. Pkg. **27c** 2 10-Oz. Pkgs. **35c**

SLICED — FROZEN

ANN PAGE PURE Strawberry Preserves **4 \$1.29**

CORN

LAKESIDE WHITE SHOE PEG

2 1-LB. CANS **29c**

MEAT

"SUPER RIGHT" LUNCHEON **35c**

AD

Large Package only **33c**

PALMOLIVE SOAP

2 Reg. Bars **21c**

Cashmere

Bouquet Soap

2 Reg. Bars **21c**

Cashmere

Bouquet Soap

Bath Bar **15c**

Super Suds

Lg. Pkg. **34c** Gt. Pkg. **81c**

P&G SOAP PRODUCTS

CAMAY SOAP Bath Bar **15c**
 IVORY FLAKES Lg. Pkg. **35c**
 DUZ SOAP Giant Pkg. **85c**
 CASCADE 20-Oz. Pkg. **43c**
 DREFF Lg. Pkg. **35c**
 LAVA SOAP 2 Med. Bars **23c**
 ZEST SOAP 2 Reg. Bars **29c**
 ZEST SOAP 2 Lg. Bars **41c**
 DOWNY FABRIC - SOFTNER Reg. Size **45c** Giant Size **85c**

MEL-O-BIT PASTEURIZED, SLICED

CHEESE

American, Swiss or Pimiento

6-OZ. PKG. **19c**

PACKER'S LABEL GREEN AND WHITE

LIMAS

2 1-LB. CANS **29c**

STOCK YOUR PANTRY!

EARLY TRADER'S BONUS



IS HERE WITH A

SHOWER OF DOLLARS FOR YOU!

Deal now... collect bonus dollars now! The Early Trader's Bonus is yours on any purchase of \$500 or more... from tractors to twine, from tillage tools to harvesting equipment. Come in today, so we can figure your Early Trader's Bonus deal on the IH equipment you need. When you buy, the dollars shower down. You'll collect interest at the rate of 6% on your trade-in and/or down payment. And you get your check at once!



the earlier you trade the more bonus dollars you get.

Byrum Implement & Truck Co.

"Your International Harvester Dealer" Dealer's Franchise No. 1560 EDENTON

701 North Broad Street - Edenton, N. C.