

Rocky Hock Revival Will End Sept. 1st

Revival services are being held this week at Rocky Hock Baptist Church and will continue through Saturday night, September 1. Services are scheduled to begin at 7:45 o'clock each night.

The Rev. Ben C. Fisher, assistant to the president of Southeastern Baptist Theological Seminary at Wake Forest, is the visiting evangelist.

A baptismal service is scheduled for Sunday morning, September 2, at 9:30 o'clock in the Chowan River at R. T. Harrell's cottage. This service will be followed by the ordinance of the Lord's Supper at 11 A. M. at the Rocky Hock Baptist Church.

Benson Speaker For Woman's Club

Continued from Page 1, Section 1

Dr. Benson was Dean of Students at Elon College before becoming the president of the first community college in the Albemarle. He graduated from Catawba College and received his masters and doctors degrees from the University of North Carolina.

He is an active member of the National Education Association and the North Carolina Education Association, having served as chairman of the evaluation committee of the NCEA.

He is married to the former Miss Helen Quakenbush of Graham and they have five children.

Aces Scheduled To Play Central High

Continued from Page 1, Section 1

only three games scheduled here until Central agreed to play us. This will give us at least four home games for next year."

Speaking of the open date on September 14, Mr. Fry said he and Coach McGee have tried everything to schedule a game. "The only way we'll get one now is for someone to call us up," explained the principal, "but I'm really not worrying about it. We know we have nine games anyway."

McGee ran his charges into the toughest competition they will ever see Thursday and Saturday nights of last week when they scrimmaged a gang of recent alumni. Included were members of the 1960 championship squad, last year's team, and Robert White.

In a very practice game Saturday night, in which there were neither kickoffs nor punts, the alumni trounced the Aces eight touchdowns to one, or by a score of 48-6. The Aces' lone score came on an intercepted pass by Tom Phillips.

Leroy Spivey rattled off two long touchdowns for the graduates, Jerry Tolley scored two, and Bubba Hopkins, Richard Dixon and Jimmy and Robert White each scored once.

Playing for the alumni were such greats as center Jack Sawyer, guards Jimmy White and Donald Forehand, tackles Charles Cuthrell and Ronald Forehand, ends Fred Britton, Joe Mitchener and Cecil Fry, Jr., and backs Robert White, Hopkins, Spivey, Dixon and Tolley.

Although the Aces took a pounding, the experience did them good. They will not play such a team again, but they will hit some just as big and some that hit just as hard.

Injuries, which could destroy McGee's slim hopes completely,

have been pecking away at the Aces for the past week. End Douglas Twiddy suffered a jammed cartilage in his neck that forced him to sit out a few sessions.

The most serious injury occurred when halfback Wayne Ashley broke a toe. It was thought early that the senior would have to sit out about three weeks, but McGee said he would play in the first game, although Ashley will practice only lightly until then.

Others missing a few drills were center Hurley Mitchell, who chipped a bone in a finger, Billy Cozart and Walter Small. Quarterback Dickey Cobb also skipped Tuesday night when an old ear ailment flared up again.

Despite the rain brought on by tropical storm Alma, McGee had the Aces outside Monday night getting used to the mud and water. The young coach said after Saturday night's slaughter that he was pretty well pleased with the Aces' performance against the alumni.

Banks Source Of Agriculture Credit

Continued from Page 1, Section 1
ers Home Administration. About 45 per cent of the production credit extended by lending institutions to North Carolina farmers come from banks.

Mr. Harlow said that "bankers in North Carolina, as well as throughout the country, are taking a realistic look at agriculture, appraising it from the standpoint of its total contribution to the economy. Through the years the agricultural industry, as a part of the total economy, has remained relatively stable, with the 'off-the-farm' portion becoming increasingly significant. Bankers, therefore, are broadening their services and are also developing and promoting programs that consider the interwoven relationships between farmers and related businesses.

"Capital has become one of the main pillars in agriculture, with the total investment increasing nearly six-fold during the past 20 years. Today farm families nationally have approximately \$195-billion invested in their operations, with an average per farm worker of nearly \$30,000—greater than the amount used in manufacturing."

Mr. Harlow stressed the importance of farmers and bankers working closely together to improve farm financial arrangements. He reported that 92 per cent of insured banks throughout the country had agricultural loans outstanding at the first of the year, with 95 per cent of the insured commercial banks in North Carolina extending credit to farm people.

Revival Begins At Ballard's Bridge

Continued from Page 1, Section 1

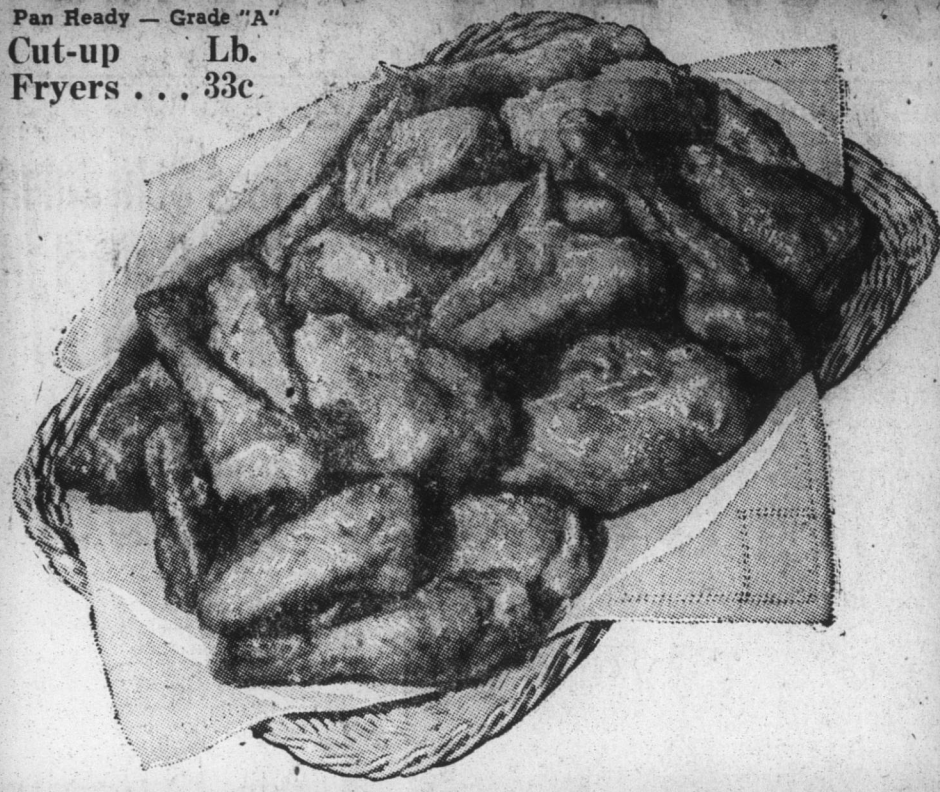
Pastoral Care of the North Carolina Baptist Hospital and the Bowman Gray School of Medicine. He has served as pastor of the Great Fork Baptist Church in Whaleyville, Va., and the First Baptist Church at Mebane, N. C.

Mrs. Betty Cole White, a member of the Ballard's Bridge Church, will lead the song service. Youth singing and special music has been planned for each service.

Mrs. Edner Asbell, a member of Ballard's Bridge Church, will be the pianist for each service.

The church invites all to worship with them during this week of revival services.

Pan Ready — Grade "A"
Cut-up Lb.
Fryers . . . 33c



BUY ONLY P&Q DEPENDABLE POULTRY—EVERY PIECE GOVERNMENT INSPECTED!

"Flavorite" — Kansas City — Grain Fed — Chuck — Lb. —

STEAKS 55^c Lb.

FFV Brand — Half or Whole
COUNTRY lb.
EVERY PIECE
GUARANTEED!

Hams 65

FAMILY PACK
FRYING CHICKEN

consists of
2—Legs
2—Thighs Lb.
2—Pc. Breast
39

Government Inspected — Grade "A" — Whole Only — North Carolina Produced — Dressed — No Limit — Stock Up Sale!

FRYERS . . . lb. 27^c

EVERY ITEM AT P&Q — GROCERY . . . MEAT . . . PRODUCE — SOLD ON A MONEY BACK GUARANTEE!

Guaranteed — Western
FRESH GROUND
BEEF 39
GROUND FRESH SEVERAL Lb. TIMES DAILY!

HYGRADE — PURE PORK
SAUSAGE 2 for 77^c
1-lb. roll

GT. FAMILY SIZE — LIBBY'S FROZEN — EACH —
APPLE PIES 25^c

Strictly Fresh SMALL
EGGS 3 dozen \$1.00

OUR OWN — ECO
Guaranteed Flavorful
PURE COFFEE 49
Drip or Regular

— FREE DELIVERY —
FRIDAY AND SATURDAY
P&Q
SUPER MARKET

Libby's — Frozen Turkey, Chicken, Beef — 8-oz. Pkgs.
Pies 455^c for

6-OZ. LIBBY'S — FROZEN MIX FOR
LEMONADE can 10c

Valley Brook — SLICED
BACON lb. 49c

KINGAN'S — ALL MEAT
FRANKS 1-Lb. Pkg. 49c

JUMBO STALK
Celery 9c

Made by Makers of Fab
ECO POWDER
DETERGENT lg. pkg. 25c

WAY PAC — WHOLE
SWEET PICKLES qt. 39c

LYNHAVEN PREPARED
MUSTARD qt. 19c

OLD VA. — PURE ASSORTED FLAVORS
JELLY Giant 2-lb. jar 39c

No. 303 — White House
APPLE SAUCE 4 cans 49c

No. 303 — June Peas can
April Showers 19c

1/2 Gallon Made Fresh Orange or Grape Drink 29c
Quality — Book Matches 10c
14-oz. Snider's Tomato Catsup 2 for 35c
ECO — Pure Shortening . . . 65c

NO LIMIT At Your P&Q!
12-oz. Swift's Meat Prem 43c
1/4 Lb. Vesper Tea 29c
2-oz. ECO Instant Coffee 27c

NEW — REBEL RING Filled Cookies 39c
GIANT BAG FROZEN — IDAHO VALLEY French Fry 2 lbs. 29c
Potatoes 29c

BRICQUETS
CHARCOAL 2 10-lb. Bag \$1.

FANCY LARGE ICEBERG
LETTUCE 2 Heads 25c

FIRST CHOICE CAN OF 10
BISCUITS 6 for 49c

Fruit Jars
dozen pints — \$1.19
dozen quarts \$1.35

Golden Ripe
BANANAS 3 29c
Table Lamps \$1.98

For Sale Or Lease

On easy terms, the A. M. Forehand farm in upper Chowan County, near Small's Cross Roads; one of the best farms in the county. 500 acres, over one half in cultivation; 48 acre peanut allotment, 5 1/4 acre tobacco allotment, and 28 acre cotton allotment; several good buildings, two tobacco barns, four water holes for stock, one creek comes up to the field on back of farm; excellent for livestock. An unusual opportunity to purchase a nice farm, as well as a beautiful home.

L. N. HOLLOWELL
HERTFORD, N. C.
Phone Hertford 4231 — Night 6671

NOTE BOOK FILLER
PAPER PACKAGE OF 350 SHEETS ONLY 98
WHY PAY MORE?

500 Free-Extra Top Value STAMPS
50 EACH with purchase of any of Items Listed

- 1. Hy-Tone School Note Book \$1.29
- 2. Note Book Filler, 350 sheets 98c
- 3. Quart Black Flag Insect Spray 59c
- 4. 10 1/2-oz. Camellia Potato Chips 58c
- 5. Giant ECO Detergent Soap Powder 89c
- 6. Giant Size Colgate Toothpaste 59c
- 7. Tom Home Permanent \$2.19
- 8. Shower Curtains \$2.25
- 9. Heap Big Stationery 59c