

Negro Home Demonstration News

by MRS. ONNIE S. CHARLTON, County Negro Home Economics Agent

This information prepared by Mrs. Genevieve K. Greenlee, Home Economics Extension Specialist, is very timely and will be helpful to you, I am sure.

How To Keep From Draining Your Wallet During The Holiday Season

1. Do not splurge by giving gifts that you cannot afford.
 2. Do not spend more than the amount of your regular pay check.
 3. Shop around for useful inexpensive gifts.
 4. Make simple toys, clothing items, or other handmade articles for the home.
 5. Check your habits for spending money and pay all bills.
- Holiday Bills—**
Many people hate to see Christmas come because of bills they will have to make. Are you one of those persons who usually go overboard to buy and give gifts that you cannot afford? Do your fingers act like a large funnel where money pass through without using good judgment as to how it should be spent for Christmas?

Try not to get excited and splurge by adding too many Christmas bills to the other bills you already have.

Don't Drain Your Wallet—

Don't drain your wallet if your income will be the same amount each pay day. You will always find it easier to make bills than it will be to pay bills. Go easy with your Christmas shopping because you may need additional money to add to your regular pay check to pay for gifts you plan to get. Remember you are obligated to pay all of your bills within a limited amount of time.

Leary's Beauty Shop

Introducing A New

ESKA

Permanent Free Form
A New Method Of
Permanent Wave



Specials On Permanents
Every Monday, Tuesday, Wednesday
from \$2.00 to \$5.00 off

Edith Is Back With Us. Call And Ask
For Christine, Edith or Max Leary.

Leary's Beauty Shop

715 N. Broad St.

Telephone 3383

Ore Train Opens Tunisia Farcountry

Phosphates, olives and tourism... an odd combination for one company's business interests? Perhaps anywhere else but Tunisia.

The Gafsa Phosphate and Railroad Company operates principally in the south of Tunisia. The phosphates extracted from the mines in the Gafsa basin are transported by

rail to Sfax, port of embarkation for the principal countries of Europe and the Far East.

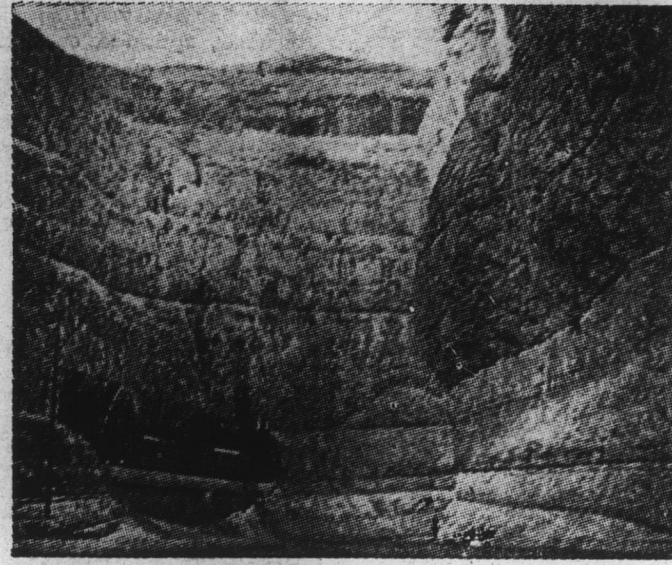
The railroad network includes several lines. That from Sfax to Metlaoui is used primarily for the transport of phosphates. It has branch lines to various isolated mines, and also connects with two of the most beautiful oases of Tunisia—Gafes and Tozeur.

The branch connecting Metlaoui and Redeyef is built in the heart of the gorges of Seldja—an incontestably spectacular technical achievement. The entry to the gorges is a split in the rock cliffs called "the sabre cut." At the bottom of the gorges flows a little stream which never dries up.

This area has become a real tourist attraction, made accessible to visitors now by the little "phosphate" railroad.

The Gafsa Company also owns a large agricultural area in the beautiful region of Mahares, 40 miles south of Sfax. It is planted with 200,000 olive trees and has an ultra-modern oil producing plant. The oil produced here is extremely high in quality and is generally sold for export.

To its multiple activities the company has recently added the management of The Olive Tree Hotel at Sfax. Built in 1925, this hotel was lately modernized and refurbished. Now, with comfortable and attractive accommodations, it provides the indispensable stopover point for the tourist wishing to set out to see the beauties of the desert.



The sturdy little phosphate, now tourist carrying train is dwarfed by the towering walls of the Seldja gorges.

Think, plan, look, and shop carefully for useful inexpensive gifts. You may even come up with an idea of how to save on your Christmas gift shopping by making simple toys or other gifts that will fit into the lives of children, relatives or friends that you want to make happy.

If you insist on spending more than your regular pay check, it may be necessary for you to think of how you can increase the family money. Get the cooperation of the family members, especially your wife, and some of the older children. Plan and discuss ways to bring in extra money. Plan extra jobs that older children may do, such as work in the afternoons, rake lawns, mow lawns, work on Saturday, clean snow, baby-sit, or think of new ways to shop where you may cut the food bill.

You may even save money by

doing without certain things or remember your friends and relatives with holiday greeting cards instead of expensive gifts. It is the thought instead of the gift that counts.

Another solution to keep from draining your wallet will be to check your habits for spending money. Jot down on a sheet of paper how you plan to spend your money. When you make this list you will have a better idea of knowing how to live and do things. Remember your list will include the money you plan to spend for gifts, cigarettes, soft drinks, snacks, lunches, and other habit forming items. This may sound foolish, but it will make sense later and keep you from draining your wallet. Money problems cannot be solved until you know where your money has gone, whether it has been for gifts or for other things.

Minutes Of County Board Of Education

The County Board of Education held its regular meeting November 5, 1962, at 8 P. M., in the office of the Board of Education. The following members were present: G. B. Potter, O. C. Long, Jr., Marvin Evans, Garland Asbell, Eugene Jordan and John M. Elliott.

The meeting was called to order by the chairman, Mr. Potter. The secretary read the minutes of the previous meeting. A motion was made by Mr. Jordan, seconded by Mr. Asbell that the minutes be approved. The motion carried.

The reports of the local school fund treasurer were presented for Chowan High and White Oak Consolidated Schools, along with that of the county accountant.

A motion was made by Mr. Jordan that the reports be adopted, seconded by Mr. Evans and duly carried.

The secretary read the bills paid since the last meeting in the amount of \$8,358.62, and some were followed by a motion made by Mr. Asbell, seconded by Mr. Long that the bills be approved. The motion was duly passed.

The superintendent apprised the board of the emergency installation of a new heating plant

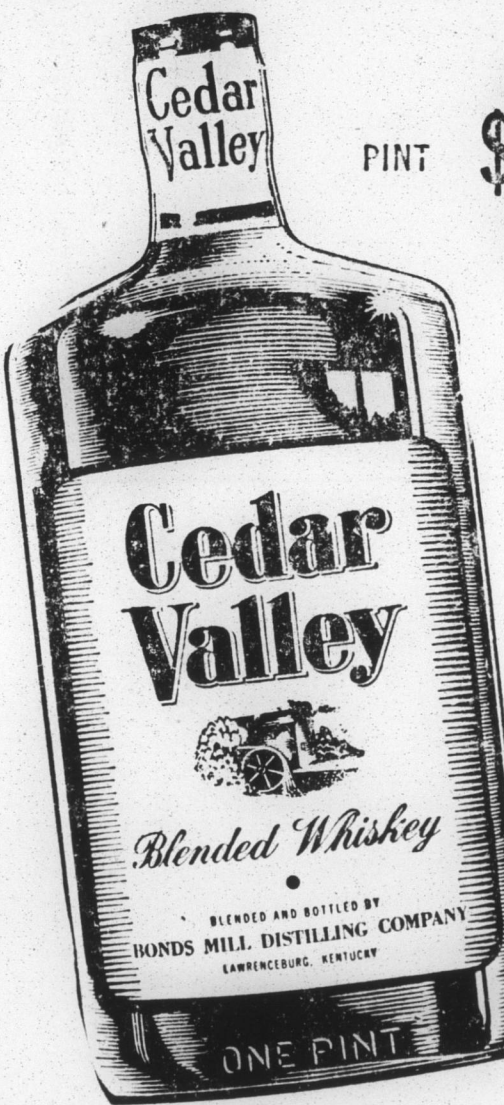
in the Chowan High School teacherage. A motion was made by Mr. Long and seconded by Mr. Evans that the replacement be approved. The motion was unanimously adopted.

The Handbook for Boards of Education was received, relative to certain policies in the operation of the schools. The superintendent was advised to present in writing certain policies which he recommended for the board's consideration at a later meeting. The superintendent requested

the board to adopt a policy relative to the closing and opening of schools under emergency weather conditions. Mr. Elliott made a motion that the superintendent be authorized to close and open schools under emergency weather conditions in accordance with his judgment. This motion was seconded by Mr. Long and unanimously adopted.

There being no further business, the Board adjourned.

G. B. POTTER, Chairman
W. J. TAYLOR, Secretary



PINT **\$2.00**

\$3.20

4/5 QUART

80 PROOF

BONDS MILL DISTILLING COMPANY
Lawrenceburg, Kentucky

Blended Whiskey
30% straight whiskey
4 years old
70% grain neutral spirits

For The Dining Room, Breakfast Room Dinette And Snack Corner

FOR YOUR KITCHEN

3 piece 42" all metal kitchen wall cabinet. Only **17.95**

Narrow wall or bedroom three shelf 18 x 36" metal cabinet—only **8.95**

36 x 20" base cabinet with marbled top—doors & shelves **13.95**

Four shelf snow white utility cabinet with lg. door **13.95**

Double door 60" high quality cabinet; a big value at **19.50**

Double glass dr., 24" wide utility cabinet; drawer, storage space. **28.50**

Kitchen cabinet, glass doors with flour bin, drawer, storage space **54.95**

66" dbl. drain board wood & porcelain kitchen sink. **134.50**

Seat or cane seat hardwood kitchen chairs; supports 400 lbs.—only **3.75**

30" solid oak round seat sturdy kitchen stools. Each **3.49**

"Ye Olde Time" cast iron cook stove; 4 eye top. Just **45.00**

Coal & wood porcelain cast iron range with 6 eye top. **124.50**

12 ft. wide heavy duty Armstrong or Congoleum felt base

We carry a terrific stock in a made variety of patterns; each piece is hard surface, easy to keep clean. You can quickly choose a pattern for any room in your home. Bring correct room measurements — Per Sq. Yd.

87^c

EARLY AMERICAN DINING ROOM SUITE IN SALEM MAPLE

A very distinctive authentic reproduction; included is server base, open hutch, three side chairs, one hostess chair, round extension dining room table. Just **248.00**

7 PC. FAMILY SIZE GROUP
Gray simulated formica top table and six chairs with box seats; self leveling legs; real quality. Just **64.50**

7 PC. DECORATED ENSEMBLE
An exquisite beauty... extension table, 6 chairs same color as table top. Only **54.50**

5 PC. DOUBLE CHROME LEG SUITE
Here's a sturdy outfit... No spilling or splashing coffee; black and gold. Going at **39.50**

Walnut Grain DINETTE ENSEMBLE
Really a beautiful suite... Round table with 17" leaf 6 wood back bronzed tone box seat diners... **119.00**

2 BIG FLOOR SAMPLE SPECIALS
Walnut grain Formica top banquet size table with six box seat upholstered chairs... Choice **89.95**

9 PC. KING SIZE DINETTE GROUP
A Really Big One... Large banquet size table with 8 matching chairs; seats all the family at once. **85.00**

9 Pc. Handsome Mahogany Ensemble
Banquet size 18th Century Table, credenza buffet, breakfast china, six Hepplewhite chairs **429.00**

Genuine 6 Piece Rock Maple Suite
Large round extension table with extra leaf; six companion Windsor chairs. Very Special. **198.00**

9x12 Seamless Rugs

9x12 ft. size felt base seamless—beautiful patterns and each Cash Carry—

4.83

Quinn Furniture Company

HOME OF FINE FURNITURE FOR 38 YEARS

South Broad St.

Edenton, N. C.



Kitchen Cabinet Special—
Glass doors with flour bin, drawer and storage space. Only **54.95**

KITCHEN STOOLS
Round seat, 30 inches high. Very strong. Each— **3.49**

DINETTE CHAIRS
Odd Dinette Chairs. One of a kind. Fine quality— **6.95**

