

## Chowan Knitters, Crocheters To Compete In Needlework Contest

Knitters and crocheters from all over the country will be pitting their skills against fellow needlework hobbyists this year as contestants in the 1963 National Wool Needlework Contest. To enable residents of this area to participate, entries for the nationwide competition will be submitted for preliminary judging locally at the Chowan County Fair which takes place from September 16 to 21. No entries may be made directly to the contest's national headquarters.

The contest, which is being inaugurated this year under the joint sponsorship of the National Hand Knitting Yarn Association and the American Wool Council, will be open to all non-professional needleworkers and will offer a grand national prize of \$1,000 cash, plus a trip to New York and a three-day stay for two. Additional cash awards will also be made to national winners other than the grand national champion.

To become eligible for the national judging which will be held in New York late in 1963, contestants initially must win a prize in the judging being held at the Chowan County Fair. This blue ribbon will be given in ten different categories, five each for knitters and crocheters, with a special engraved trophy awarded to the entry selected from all first prize winners as "Best of Fair."

Blue ribbon winners then become eligible for the second round of judging that immediately precedes participation on the national level. This judging will take place at the Chowan County Fair, designated as the Sweepstakes Fair in this area, where first prize winners from the Chowan County Fair will be placed in competition, within their category, with first prize winners from other fairs within this geographical area.

Finalists, selected at the Sweepstakes Fair judging, will then be supplied by the National Hand Knitting Yarn Association with complete information and official forms for entering their winning designs in the national finals.

All articles submitted for preliminary judging in the 1963 National Wool Needlework Contest must be knitted or crocheted of 100% wool yarn of any ply and must have been completed since January 1, 1963. One label from the yarn used must be attached to every entry. Contestants are permitted to submit as many entries as desired in any of the categories. The categories

for both knitting and crocheting include afghans, sweaters, stoles, scarves (one category), three-piece baby sets and socks, gloves and mittens (one category).

At both the preliminary and Sweepstakes Fair judgments, additional ribbons will also be awarded to second and third place winners in each of the ten categories.

For further information regarding the contest rules and how to submit entries, potential contestants should contact Miss Pauline Calloway at the Extension Home Demonstration office or any fair official.

## Health Officials Present Report

Continued from Page 1, Section 1

ed, together with maps pointing out sanitation deficiencies, which were fully explained to members of the Council.

The report showed that 1,337 residences were observed during the survey which were classified as good, fair, and poor. It was pointed out that 30 privies are still in use in Edenton as well as 52 vogals. The survey was broken down to take in housing, water supply, sewage disposal, refuse sanitation, lumber, rubble and artificial containers, animals and poultry mosquito control.

Quite a lengthy list of recommendations was presented in the report for each category, most of which are inexpensive. It was pointed out, however, that only with the active support and whole-hearted cooperation of the town, together with the citizens of Edenton, will the plan be carried out to help prevent disease and freedom of annoyance from insects and rodents and making the citizens healthier and happier.

The report urged that every effort be made to eliminate substandard housing and that consideration be given to the adoption of a minimum housing ordinance.

It recommends that all premises having privies that are within 200 feet of a public sanitary sewer be required to eliminate this method of excreta disposal and attach to the town sewer system and that all flush type toilets be constructed inside main building or residences.

As to refuse sanitation, the report recommends reduction of collection at private premises from daily to two times a week, with considerations being made for backyard pickup. It provides for daily collection at all busi-



**ALL WET**—Jane Fonda looks worse for wear after a mud puddle and hose bath in the Hollywood film, "Period of Adjustment."

nesses and commercial establishments. It recommends all refuse use containers to be of standard construction and size, 20 to 32 gallon capacity with tight fitting lids. It provides for all containers to be placed in racks or holders of such construction to prevent overturning by dogs, to facilitate cleaning around the area of the can and to add to the life of the container. Certain days or time would be designated for the pickup of trash and refuse that has been placed on the curb.

The report urges that the sanitary landfill method for disposal of garbage be continued, utilizing the trench method as recommended by the State Board of Health and that citizens should continue to use free rat poison which is available at the county agent's office and Health Department.

The report recommends that the town employ on a full time or part time basis a person to advise and direct a general house-to-house clean-up program. All usable lumber required to be stacked 15 inches off the ground and that all lots be cut and cleaned at least twice a year.

According to the recommendations all animal and fowl ordinances should be enforced and to consider amending present ordinances to include minimum distance requirements.

As to mosquito controls, the town was advised to use various precautions in preventing of breeding and that the potential mosquito propagation sites be

surveyed at weekly intervals beginning April 8 and ending November 8, and treat actual mosquito breeding sites with a suitable larvicide.

The representatives from the two Health Department were asked about the spraying system now in use in Edenton. They recommended the continued use of this method to help reduce the mosquito nuisance.

Mayor John Mitchener, on behalf of Town Council, thanked the group for their efforts and stated that serious consideration would be given to the recommendations and hoped various groups in Edenton would adopt some of them as a project.

A delegation of Jaycees appeared at the meeting to present a report of a traffic sign survey which was recently completed in Edenton. It was pointed out that 291 signs were checked and that of this number 226 needed some kind of change or repairs.

The Councilmen were informed that the Edenton Jaycees was one of three clubs to complete the survey, which is a statewide project. Mayor Mitchener also thanked the Jaycees for the report and expressed the hope that something will be done to remedy the situation.

With a recent Housing and Home Finance Agency grant to extend water and sewer systems, a resolution was adopted to assess property owners for these extensions.

Considerable time was devoted to the proposal to pave the parking area back of the Belk-

Tyler store. It was agreed to accept the offer of the Belk-Tyler store to pay a rental of \$150 a year for the area and that it would be hardsurfaced by the town. It is estimated that the area will accommodate in the neighborhood of 70 cars, and the general opinion of the Councilmen was that the parking would be free so that no parking meters would be installed.

Permission was given for use of the fire station on the base property for conducting an industrial school for automobile mechanics and stenographers. The school will be sponsored by the North Carolina Employment Commission.

The Councilmen declined to accept back taxes on a plot 80 x 108 on the Baer property on which it is planned to erect an apartment building. Some consideration was also given to changing parking meters so that two meters would be placed on one post.

## Farmers Receive \$632,000 From FHA

Continued from Page 1, Section 1

over \$200,000 in principal and interest on loans from the Farmers Home Administration. A total of 19 farm families in the area completely repaid their Farmers Home Administration loans this last year.

Mr. Norman said, "The record of farm families in the Albemarle section using Farmers Home Administration credit proves once again that with adequate credit plus technical advice on farming problems, small farmers can operate successfully under modern agricultural conditions."

"The family farmers is not obsolete, as some commentators charge. Given access to the best farming information available and capital to do a modern job of farming, he is and will remain the mainstay of the state's agricultural economy."

The Food and Agriculture Act of 1962, signed by President Kennedy in September, added a number of new loan authorizations to the Farmers Home Administration program of supervised credit in the state, Mr. Norman reported.

Farm operating and ownership loans were broadened to include the financing of recreational enterprises designed to help supplement farmers' incomes. One loan of this type in the amount



**PEARL TREE?**—Barbara Kaneshige, 9, appears to have stumbled across a pearl tree in New York. Actually, the lavish array of cultured pearls hanging from the branches were put there to celebrate the opening of a new store. They were part of a million-dollar display.

of \$11,600 was approved in the area. This loan was for the purpose of providing lodging and dining facilities for hunters and fishermen.

Small towns and associations of farmers and other rural residents now may also borrow funds to finance changes in land use, including development of recreational facilities, water systems, labor housing camps and rental housing for senior citizens.

The Senior Citizens Housing

Act of 1962 established a Farmers Home Administration program of loans to individuals, corporations and groups to build rental housing for the elderly in rural areas. Loans were also authorized to individuals over 62 to buy, build or renovate housing for themselves.

These new authorizations were in addition to general modernization of Farmers Home Administration existing lending programs brought about by the Agriculture and Housing Acts of 1961.

All Farmers Home Administration loans are accompanied by technical advice on farm and financial management. Loans are made only to applicants unable to obtain needed credit from conventional lenders.

The Farmers Home Administration office in Hertford serves five counties, namely Camden, Chowan, Currituck, Pasquotank and Perquimans.

## JAYCEES MEET TONIGHT

Edenton's Junior Chamber of Commerce will meet tonight (Thursday) at 7 o'clock at the Edenton Restaurant. President Jack Habit urges every Jaycee to be on hand.

TRY A HERALD CLASSIFIED



ENGRAVED OR PRINTED



all types of social printing is at your command. We will be glad to make suggestions, show you samples and quote prices . . . all without the slightest obligation on your part.

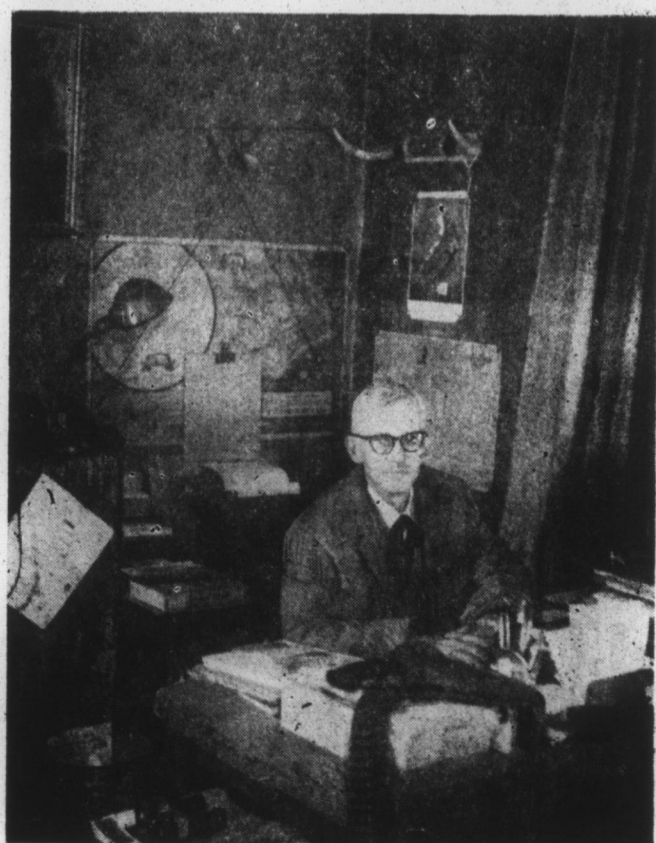
**Wedding Invitations and Announcements**

In the wording, design and printing of the formal Announcement or Invitation, it is of the utmost importance that correct form be observed. Our familiarity with the established customs applying to quality printing will assure you satisfaction.

See Samples at  
**The Chowan Herald**

NOW ON SALE

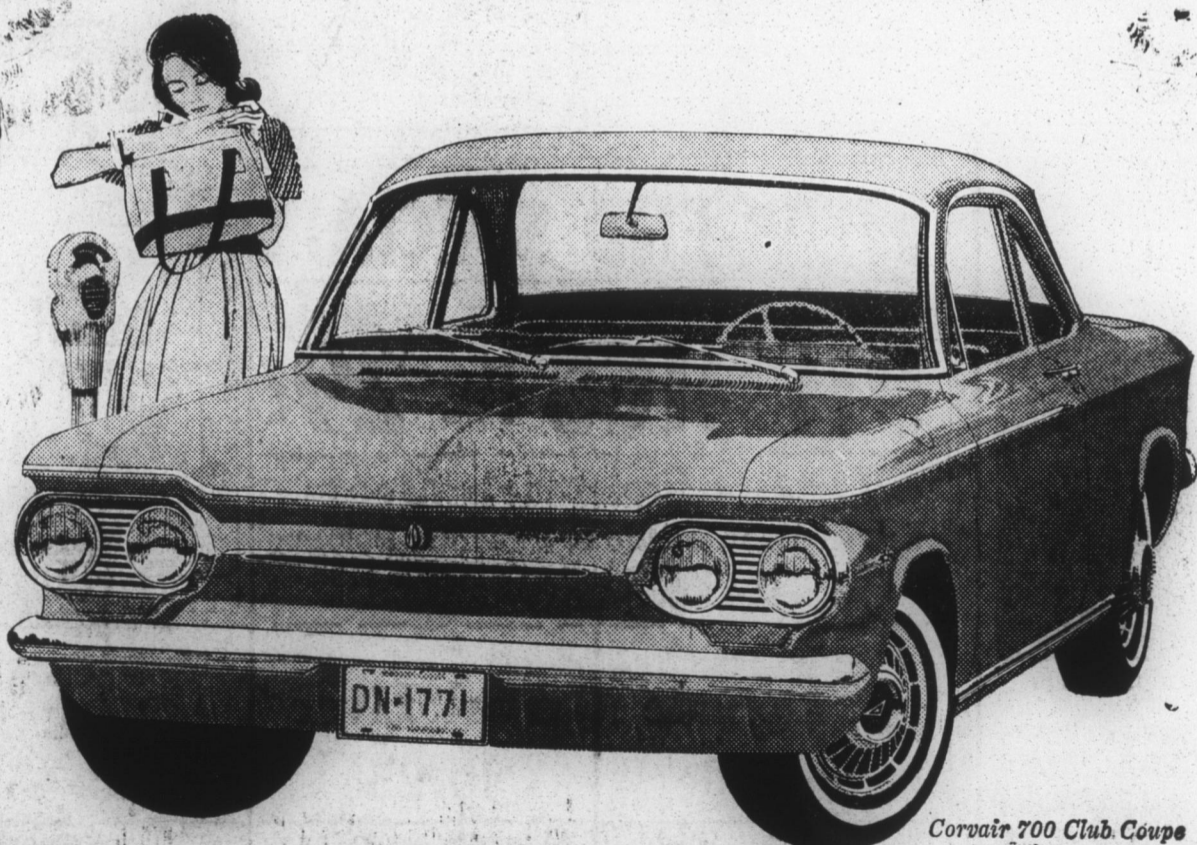
# Moon Over Main Street



Wilborne Harrell

A Collection of Some of the Best Poems of Wilborne Harrell, Edenton's Own Poet.

PRICE JUST \$1.00



Corvair 700 Club Coupe

## The hardest part about parking a Corvair is finding a nickel

That may be a slight overstatement, but such jauntiness comes easily when you're a Corvair owner.

And you can usually back it up—as easily as you can back up a Corvair. You'll find yourself doing that occasionally, if only to adjust the brakes—they're self-adjusting. That's all there is to it, and that's a good example of how delightfully easy Corvair is to own, drive and maintain.

But since we began by talking about driving, let's stick with that awhile. A large factor in the fun of driving a Corvair is the location of its engine in

the rear. Why the rear? It gives Corvair extra traction on any road surface. It provides a nearly flat floor for more useable interior space. Best of all, it produces steering so light, so responsive, you wonder why no other American-made car thought of it.

Corvair's engine is also air cooled, we might add, which means there's no anti-freeze or water for you to add. Ever.

All that pleasure from something so practical almost makes you think Corvair is unique among American cars. Which isn't surprising, because it is!



CHECK HIS TNT DEALS ON CHEVROLET, CHEVY II, CORVAIR AND CORVETTE

**George Chevrolet Company, Inc.**

Phone 482-2188

1100 N. Broad St.

EDENTON, N. C.

Manufacturer's License No. 110

Dealer's Franchise No. 988