

Miss Jean Goodwin Scholarship Finalist

One of 24 Students to Be Interviewed This Week

Twenty-four young women finalists in the Katharine Smith Reynolds Scholarships competition will be interviewed Wednesday and Thursday of this week at the University of North Carolina in Greensboro.

From them the scholarship central committee will choose 12 to receive the \$1,200 four-year-renewable scholarships for the academic year 1964-65. The winners will be announced within the week.

Each of the 24 finalists was nominated by her high school and selected by district committees composed of UNC-G alumnae.

The Reynolds Scholarships to UNC-G were established in November 1962 by the Z. Smith Reynolds Foundation in memory of Mrs. Katharine Smith Reynolds, a WC alumna, wife of the founder of the Reynolds Tobacco Company, and mother of R. J. Reynolds.

Each Reynolds scholarship holder is provided with complete financial support.

Among the finalists is Miss Jean Goodwin of Edenton, daughter of Mr. and Mrs. W. P. Goodwin.

Employee Class Now Filled Up

West Byrum, president of the Edenton Chamber of Commerce, reports that the Chamber-sponsored employee improvement program now has 60 persons registered for the course and that no more will be able to enroll.

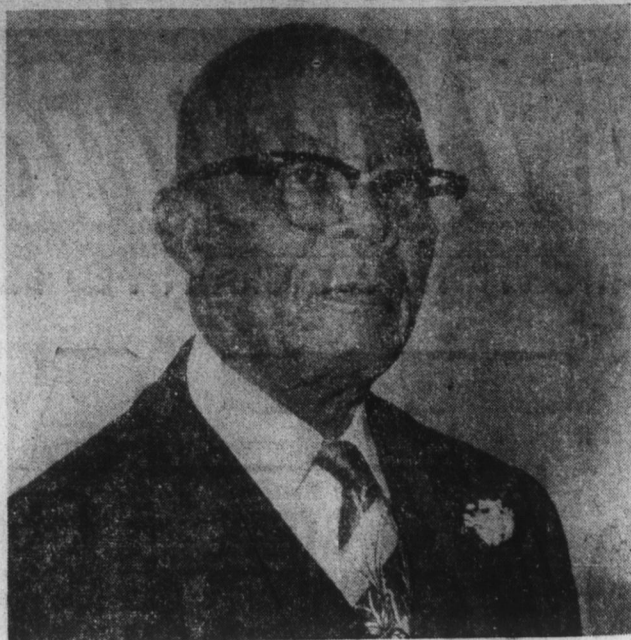
The latest to enroll for the course were Robert Turner and Gus Francis from the George Chevrolet Company. The course now represents employees from 16 local business firms, with classes held in the Hotel Joseph Hewes ballroom.

The initial class in the program consists of 10 hours instruction in customer relations, which is taught by Professor Claude Davis of the College of the Albemarle. Other subjects to be taught under the program include 20 hours in oral communication, 10 hours in personality development and 20 hours in professional selling and creative salesmanship.

The course is sanctioned by the N. C. Department of Public Instruction.

The doctrine of equality seldom embraces those who are worse off than its exponents. —R. A. Piddington.

Rev. S. N. Griffith Honored



The Rev. S. N. Griffith was recently honored by the Woman's Club for his untiring services in this community for more than 40 years.

Rev. Griffith, a native of British Guinea, came to Edenton to serve as rector of the St. John's Episcopal Church. It was not his intention at first to settle in Edenton, but after observing the educational plight of

Old School Offered To DAR Chapter

Continued from Page 1, Section 1

have to be borne by other than the development company.

In the meantime word that the Parson Earle building might be donated to the community reached the Tea Party Chapter of the DAR and their officers immediately contacted Mr. Tarleton of the State Department of Archives and History. Mr. Tarleton agreed that this would be a worthy building to add to Edenton's other points of historic interest and agreed with the local DAR chapter that the Parson Earle schoolhouse building could very well be located on the grounds of the Iredell House in Edenton, which receives some state financial support.

Now the Tea Party Chapter of the DAR is faced with raising the funds to not only move the Parson Earle building but also to erect a foundation on which to place it after it has been moved from the former location on Bandon Plantation. Mrs. Jacqueline Ricks Jr., regent of the local DAR Chapter, will head the drive for funds and will handle the publicity attached to the transfer of the old historic building to Edenton.

Southern Properties, Inc., started with 236 acres to develop Arrowhead Peach and Boat Club land with the 55 acres purchased from Mrs. Fletcher, their total development is now 341 acres with three miles of waterfront on

the boys and girls in the community, he decided to organize a school.

Since that time Rev. Griffith has devoted his time and talent to the people in Edenton.

At the service honoring him many tributes were paid by some whose life he had helped to shape. The club presented him a beautiful plaque as an appreciation for the services rendered.

Chowan River. They plan to build a clubhouse and membership in their beach and boat club is mushrooming with many local people taking advantage of the family membership contract. Roads have been built and 18 vacation homes have already been constructed. A bath house has been completed adjacent to the fine beach and public children's playground area readied and protected by a high enclosure.

Southern Properties have two lake developments in the state of Michigan and have just purchased a tract of 800 acres near Tappanhook, Virginia, for still another vacation resort development. Don Foote is president of Southern Properties and Pettus H. Rudd is vice president in charge of the Arrowhead Beach and Boat Club development.

Work Progressing On Watershed

Continued from Page 1, Section 1

pasture land and to install adequate drainage outlets sufficiently close to individual farms.

Soil Conservation Service personnel assisted the sponsors in developing a watershed plan to solve the problems. A contract was let last August to make the needed improvements. The works of improvement in the contract include 191 acres of clearing, 21.5 miles of main and lateral ditch construction, 21 culverts for farm road crossings and 133 surface inlets. This work is scheduled to be completed by July of this year. SCS personnel are assisting in supervising the installation of work. The total cost of the project is estimated at \$403,000. Around \$157,000 is being paid by Public Law 566 funds and \$246,000 from other funds. The benefits of the project are expected to return annually \$3.10 for each dollar spent on constructing and maintaining the works of improvement.

When the system of new channels covering the watershed are completed, then the landowners of the 105 farms in the watershed can turn their attention to improving the drainage systems on their individual farms and developing the potential of their soil. This in turn will give them and their community a better way of life, making Chowan a better place in which to live.

The defect of equality is that we only desire it with our superiors. —Henry Beque.

AROUND THE FARMS IN CHOWAN COUNTY

By C. W. OVERMAN, Chowan County Agent

Am I Making Progress? Every farmer needs to ask himself this question. Each of us is not standing still; we are either falling behind or we are moving ahead by using improved practices in our crops and livestock. Based on my observation I am satisfied most farmers in Chowan County are making progress in the application of better production practices. Let's make 1964 the greatest year of progress yet by all farmers employing needed improved practices on all crops and livestock on their farms.

Soil Testing: Since January 1 there has been a considerable increase in soil testing over previous years in Chowan County. This statement is based on the number of copies of soil test reports that have been received in our office. During 1963 some 820 soil samples were taken on 150 farms in Chowan County. Seventy-seven percent or 630 of these fields needed lime. Sixty percent or 480 of these fields were low or very low in potash and needed additional potash for proper plant production. Assuming that maybe another 50 to 100 farms had soil tested in 1962 or 1961 so that soil tests were not needed in 1963 this would only amount to a total of 200 to 250 farms testing soil in Chowan County during the last three years.

Chowan County has approximately 660 farms. If 200 to 250 had soil tested during the last two or three years what about the other 410 to 460 farms that made no use of the soil testing facilities for determining lime and fertilizer needs on their fields. The chances are that the yields on these farms not testing soil are those making lower yields and holding down our average yields for the county as well as failing to make the income that is possible. We still need to make considerable progress in the number of farms testing soil and a great increase in the number of farms having soil tested on every field, at least once every three years.

Soil samples sent in now will give reports in time to be of some help this year, certainly if lime is needed.

Combination Nitrogen-Herbicide On Corn: Several farmers used a combination of liquid nitrogen and a herbicide in 1963 and were very successful. Generally the herbicide used was sprayed on using about 10 to 15 gallons of water per acre and cultivate in shallow immediately behind it. Sun tends to deteriorate the chemical very quickly. Therefore, immediate soil incorporation is necessary to

be effective. It can be put out as much as two to three weeks prior to planting so long as the surface of the soil is not disturbed more than about two inches.

Diuron (Karmex DL) may be used at the rate of 1½ to 3 pints per acre broadcast immediately after cotton planting and gives good weed control. It should be mixed with water at the same rate. Cholora IPC applied at the rate of 6 to 9 quarts per acre is another good herbicide for cotton. This also must be applied after planting and before cotton emerges.

These chemicals may also be applied as band treatments. In the case of a 14 inch band use about one-third the amount of the above broadcast rate. A 20 inch band should be used at about one-half the broadcast rate. The cost of the chemical per acre for broadcast application using Treflan will run about \$9.00, Diuron about \$5.50, and Cholora IPC about \$15.00. The cost of band treatments will be in proportion to the amount of material used.

Cotton Weed Control: Last year we sprayed Treflan on the land running a rolling cultivator immediately behind the sprayer to incorporate the herbicide in the upper two to three inches of soil for cotton weed control in an acre on the Turkey Neck Farm with B. W. Evans and Edward Goodwin. The cotton was planted the same day and although we did not get a good stand of cotton the stand was just as good as in the area where the herbicide was not used. The herbicide treated area was not cultivated for four weeks while the untreated field was cultivated three or four times. Hill to hill chopping was necessary in the untreated area while on the treated area it was only necessary to walk over the field cutting out an occasional weed. People who observed this demonstration area seemed to be very much impressed with the effectiveness of the chemical. It is a chemical that will work in dry soil as well as moist soil and cultivating shallow does not bother it.

Treflan should be applied at the rate of 1 to 1½ pints per acre on light soils, 1½ to 2 pints per acre on medium soils and 2 to 3 pints per acre on very heavy soils. Normally we think of applying 1 quart per acre on all except real light sandy soils. The material should be sprayed on using about 10 to 15 gallons of water per acre and cultivate in shallow immediately behind it. Sun tends to deteriorate the chemical very quickly. Therefore, immediate soil incorporation is necessary to

Hopkins Honored By Ford Motor Co.

Becomes Member of Professional Sales Managers

Thomas F. Hopkins, salesman for the Albemarle Motor Company, local Ford dealer, was signally honored Friday, when he was presented a beautiful plaque in recognition of becoming a member of the Society of Professional Sales Managers for Ford Motor Company.

The plaque, beautifully inscribed and signed by O. F. Yando, was presented by Gary Sears, field representative of the Richmond District.

The Society of Professional Sales Managers is an organization dedicated to sales leadership and the promotion of ethical sales practices.

Saturday Holidays Now Rob Day Off For County Offices

Chowan County Commissioners on Monday were asked to consider closing county offices Friday when holidays fall on Saturday. The request was made due to all county offices, except Sheriff Earl Goodwin, now being closed on Saturdays. However, due to the absence of Chairman W. E. Bond, action on the request was postponed until the April meeting.

According to a motion passed in November, 1955, the following designated holidays are observed by county offices as holidays: New Year's Day, Washington's Birthday, Easter Monday, National Memorial Day, Independence Day, Labor Day, Veterans' Day, Thanksgiving Day and Christmas Day.

FIREMEN MEET TONIGHT

Edenton firemen will hold their monthly dinner meeting tonight (Thursday) at 7 o'clock at the fire station. Fire Chief W. J. Yates requests every fireman to be present.

Curtis Twiddy Makes Honor Roll At UNC

Only 15% of the students achieved such high academic distinction, according to Dean J. Carlyle Sitterson, and Twiddy's parents were congratulated on the fine work of their son.

Curtis Twiddy, son of Mr. and Mrs. Curtis A. Twiddy made the Honor Roll in the College of Arts and Sciences at the University of North Carolina during the fall semester. The honor means that Young Twiddy had an average of B or higher on all work taken (not less than 15 hours).

Only 15% of the students achieved such high academic distinction, according to Dean J. Carlyle Sitterson, and Twiddy's parents were congratulated on the fine work of their son.

KENTUCKY STRAIGHT BOURBON WHISKEY 86 PROOF 6 YEARS OLD



\$3.95 4/5 Qt.
\$2.50 Pint

NOTICE! CHANGE OF MEETING

The regular meeting of the Edenton Town Council scheduled for Tuesday, March 10, will be held Tuesday March 17 at 8:00 P. M.; the change is due to Mayor John A. Mitchener being out of town.

W. B. GARDNER
TOWN CLERK

FOR SOIL SAMPLES AND BULK SPREADER SERVICE

Lime - Lime and Potash Mixed - Fertilizer
SEE OR CALL

Home Feed & Fertilizer Co.
West Carteret St. Edenton, N. C.
Phone 482-2313 or 482-2308

WEEK-END SPECIALS

Grade "A" whole only

FRYERS lb. 24c

Swift's Sweet Rasher

BACON lb. 39c

FRESH GROUND

Hamburger 3 LBS \$1.00

NO. 303 RED & WHITE
Apple Sauce 2 cans 29c

BERTIE
Herring Roe, 8-oz. can 15c

46-OZ. CAN LIBBY'S
Tomato Juice can 27c

RED & WHITE - STRAWBERRY, CHOC. VANILLA
Ice Cream ½ gal. 49c

SOUTHERN CAKE SPECIAL
6-Layer Chocolate Cake 49c
Reg. 59c Angel Food Cake ... 49c

D & M SUPER MARKET

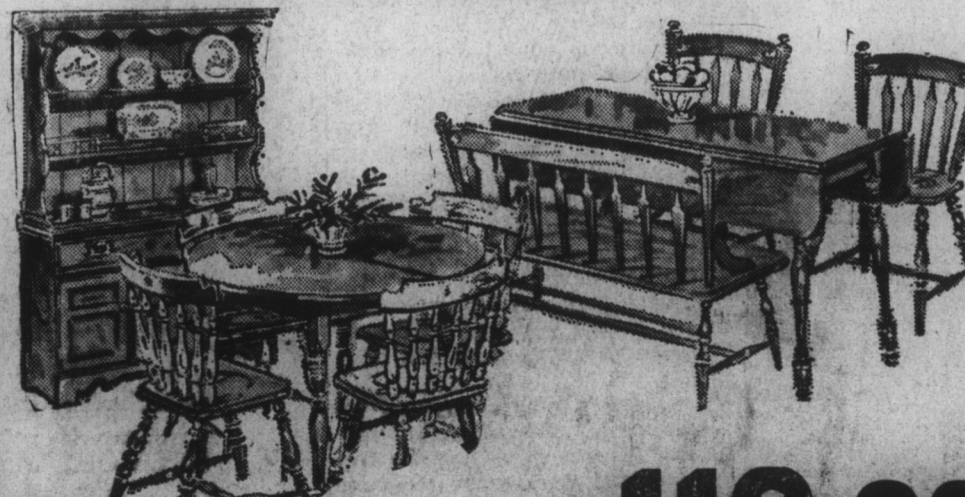
HOME OWNED - HOME OPERATED
The Store Large Enough for Values... Yet Small Enough to Feel An Interest in Every Customer!
Phone 482-2317 For Free Delivery Every Day On Orders \$2.00 or More!

The New Furniture Fashions ARE HERE

FURNISH YOUR HOME WITH STYLE & DISTINCTION

SOLID MAPLE DINING ROOM ENSEMBLE

Tables With Nevermar Plastic Tops



Your Choice only \$119.88

• 36" x 48" Rectangular Table with 12" Leaf and Six Maple Padded Chairs.

OR
• 36" Round Table with 12" Leaf and Four Maple Padded Chairs.

MANY, MANY OTHER DINING ROOM PIECES NOW ALL SPECIALLY PRICED

Colonial Furniture Co.
EDENTON, N. C.