

"Old Fashion" Service Slated

Long dresses, pump or-gans, sun bonnets, lantern light and high hats will be the order of the day at the Immanuel Baptist Church November 21, when the congregation celebrates "Old Fashioned Sunday".

The event promises to be a big day at the church, with

ushers and deacons in bibbed overalls taking up the collection in hats and waiting upon the congregation when they receive the Lord's Supper at the night service. Old Fashioned Sunday will extend to the night service.

A special program will be presented by Immanuel

Christian Kindergarten directed by Mrs. Gail Ware. The children will be dressed as pilgrims and will sing old hymns and give recitations about the Pilgrims as well as Thanksgiving verses.

Mrs. Cabell Pruden is head of a committee to show a display of antiques owned by local citizens. Among these is a pump organ loaned to the church for the day by Mrs. H. Lane of Tyner. It will be used for congregational singing and for offertories for both morning and evening services.

Special singing is planned by music director Orval Williams. Several groups will sing old-fashioned favorites such as "Little Brown Church in the Vale," and "The Old Fashioned Meeting." Congregational songs will be old beloved hymns of the faith.

The public is invited to attend both morning evening services of "Old Fashioned Sunday".

Rev. Bob Ware is pastor of the church. Sunday School time is 10 A. M., morning worship at 11 A. M., and evening worship at 7:30 P. M.

Sugg Is Urging Favorable Vote

On November 23rd peanut growers and cotton growers will be given an opportunity to go to the polls and vote for the continuation of the price support program. The peanut growers will vote for the continuation of the program for the three-year period, 1966, 1967 and 1968.

According to Joe E. Sugg, executive secretary of the

North Carolina Peanut Growers Association, "this is one of the most important days of the year for the peanut growers of North Carolina." A favorable vote for the continuation of this program will mean that prices of peanuts will be supported through the Commodity Credit program at approximately 11½ cents per pound for each of the next three years.

"Without a favorable vote," according to Sugg, "there would be no acreage allotment and on an unlimited production basis the prices of peanuts would drop to levels close to the cost of production." He further pointed out that not only is this program important to growers but is also a vital factor in the economic life of all communities where peanuts are produced. The peanut program has been in effect for a number of years and has proven to be one of the most satisfactory of all the commodity price support programs.

Sugg emphasized that the peanut industry as a whole with representatives from throughout the United States is constantly working to improve the program for the benefit of growers, manufacturers and consumers. All peanut growers are urged to go to the polls at the regular ASCS polling places on November 23rd and vote on both the peanut and cotton programs.

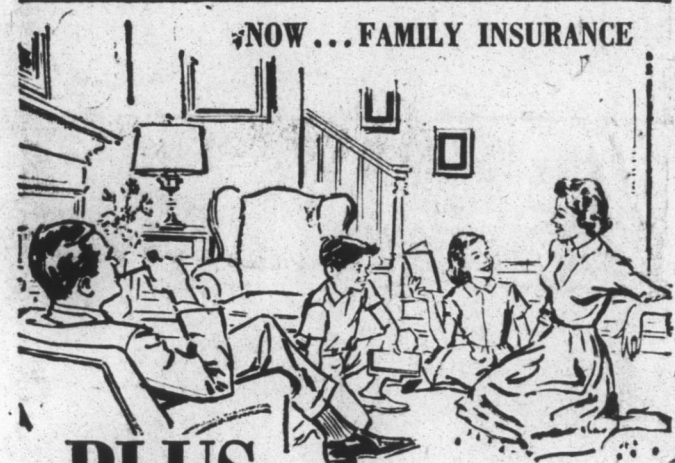
Turnabout

"Does your wife go to church to see what other women wear?" asked snooty Mr. Harris.

"Oh, no," rejoined the newly-rich Mr. Updyke, "my wife has so much money to spend on clothes now that she goes to church to let the other women see what she wears."



BEEFEATER GIN
5.20
FIFTH
IMPORTED FROM ENGLAND BY KOBRAND CORP.
NEW YORK 16, N.Y.
94 PROOF • 100% GRAIN NEUTRAL SPIRITS



NOW... FAMILY INSURANCE

PLUS CASH AT AGE 65

You can insure yourself, your wife and children — and build a cash retirement fund at the same time — with Metropolitan's new Family endowment policy.

I'll be glad to give you full details. Just call or write today. There's no obligation, of course.

Bill Herman — Phone 482-2419
P. O. Box 31, Edenton, N. C.

Metropolitan Life
INSURANCE COMPANY
NEW YORK, N.Y.



Information please

As pharmacists, one of our jobs is answering questions.

These may range from "Which tooth paste is best?" to "Is there a doctor close by?" To us, they're part of a day's work, and we try our best to answer. As businessmen and pharmacists, we know the products we sell. We know the physicians in our area and their specialties. Feel free to use us as "answer men" next time you're in... it's part of our service.

Hollowell's
REXALL DRUG STORE

Two Registered Pharmacists
Registered Pharmacists Always on Duty
Phone 482-2127, Prompt Delivery

Mrs. Moore, 83, Taken In Death

Mrs. Mabel Vann Moore, 83, died Saturday morning at Chowan Hospital Nursing Home here, after a long illness.

She was a native of Chowan County and had lived in Edenton for a number of years.

Mrs. Moore was a daughter of Samuel C. and Betty Henley Vann. Her marriage was to John Augustus Moore, who preceded her in death.

Surviving is a son, John A. Moore of Franklinton; two daughters, Mrs. Carter R. Rowe of Chestnut Hills, Mass., and Miss Elizabeth V. Moore of Edenton; one sister, Mrs. Robert J. Rose of Franklinton, and four grandchildren.

She was a member of St. Paul's Episcopal Church, where funeral services were conducted at 2:30 P. M. Sunday with Rev. George B. Holmes officiating. Burial was in St. Paul's churchyard.

Pallbearers were David Warren, Richard Dixon, John Graham, Gilliam Wood, Sterling Gilliam and Charles Wales.

Williford Funeral Home was in charge of arrangements.

ALL THE MAKINGS OF A WONDERFUL THANKSGIVING DINNER

Phthisic's SUPER MARKET - Edenton

FREE PARKING

Just Across The Street At Town Parking Lot

DELIGHT IN EVERY BITE OF MEAT FROM PHTHISIC'S

6 TO 8-LB. GWALTNEY TENDERIZED

Smoked Picnics lb. 39c

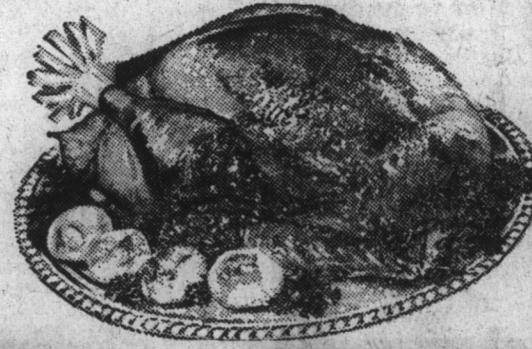
1-LB. CYPRESS BRAND
BACON lb. 55c

1-LB. GWALTNEY
FRANKS lb. 49c

1 lb. CHUB'S BARBEQUE lb. 99c



Order Your Fresh Holiday Turkey Today--

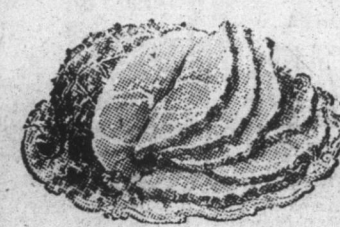


18 to 24-lb. Young Rockingham Frozen

TURKEYS 35c

8 to 14-lb. Festival

HEN TURKEYS lb. 37c



10 TO 12 LB. HARRELL'S — PEPPER COATED
COUNTRY STYLE HAM lb. 79c

12 TO 14-LB. LUTER'S
SMITHFIELD HAM lb. 89c

5 Lbs. Cream Self-Rising or Plain
FLOUR bag 53c

10-oz. Heinz can
Tomato Soup 10c

14-oz. Pillsbury box
Hot Roll Mix 25c

No. 2½ Del-Monte jar
Spiced Peaches 39c

400 Ct. — Scottie
TISSUE box 19c

No. 303 Ocean Spray 2 cans
Cranberry Sauce 49c

for Quick-Fix Meals
FROZEN FOODS
½ Gal. Slender Sal Asstd. Flavors

2-lb. Jane Martin
Fruit Cake 99c

ICE MILK
ctn. 39c
2 Lbs. Deerfield

ENJOY FRESH PRODUCE
5 Lbs. Fancy Local Grown

Baby Lima Beans
bag 53c

Sweet Potatoes
bag 39c

AT **Boyle's** EDENTON
SHOP FRIDAYS 'TIL 9

JUST ARRIVED!
ALL NEW!
GIANT SCREEN 21" PORTABLE TV
21" overall diag. meas., 212 sq. in. rectangular picture area
ZENITH
DELUXE QUALITY HANDCRAFTED TV
Built Better to Last Longer

Note the imaginative new "Flush-Front" design for a totally different look in portable TV styling

FULL ZENITH PERFORMANCE FEATURES

- Zenith Patented Custom "Perma-Set" VHF Fine Tuning Control
- Peak Picture Control
- 20,000 Volts Picture Power
- Power Transformer
- Automatic "Fringe-Lock" Circuit

The AUSTIN • N2180 The Award Series
All new compact big-screen 21" portable TV styling! Metal cabinet in Metallic Tan color. Top carry handle. Deluxe Video Range Tuning System. Dipole Antenna. Outstanding Zenith quality at a LOW, LOW

HANDCRAFTED!
FOR GREATER DEPENDABILITY!

Every Zenith TV chassis connection is 100% handwired. The rugged metal chassis base with up to 200 times greater heat conductivity than phenolic used in printed circuit boards means fewer service problems and greater operating dependability.

NO PRINTED CIRCUITS! NO PRODUCTION SHORTCUTS!

ZENITH—The quality goes in before the name goes on.

ALL NEW 1965 **ZENITH**
AM TABLE RADIO

The TROUBADOUR Model N512
Trim styling. Zenith quality speaker. Colors: Grained Teakwood color and tan; Grained Cherry color and ivory color; Grained Walnut color and white.

Jackson's Radio & TV Service
W. Eden Street Phone 482-3519