



THE CHOWAN HERALD



SECTION TWO

Edenton, Chowan County, North Carolina 27932 Thursday, November 18, 1965.

SECTION TWO

Wilborne Harrell

The Roundup

Peace? What is peace? In my opinion, it is not merely the absence of war; the absence of turmoils, conflicts and poverty. It is not the absence of riches or the presence of riches. Great knowledge does not bring peace and neither does ignorance. There has never been total peace in the world; there have always been wars and rumors of wars. This so-called peace is merely the umbilical cord that links wars together. Peace follows war and war follows peace. If this sounds pessimistic and lugubrious, so be it. We have had wars down through the ages; World War I, World War II, Korea, now Viet Nam. Will it all end in peace? I doubt it.

GRAPHIC CARTOON—A brilliant and beautiful full moon shining above the darkened skyline of New York City during the recent blackout of power failure.

Game Attended By Legislators

GREENVILLE—Rep. W. J. P. Earnhardt, Jr., of Chowan was among some 50 members of the North Carolina General Assembly who attended the East Carolina College-George Washington football game Saturday.

Adding to entertainment for the special legislative guests was the usual half-time performance by the college's field band, the Marching Pirates and the six majorettes who accompany them.

Caption reads: THE LIGHT THAT NEVER FAILS.

It is to be deplored that Chowan County and Edenton has become the scene of active Klan operations. I was rather proud of the fact that this section of the State was sanely and with common sense refraining from the violence that has marred other communities of the South. But that was not to be; for witness the recent cross burnings in the county and Edenton. In my opinion there is something obscene, impious, sacrilegious and profane about the burning of crosses, as it is practiced by the KKK. It is uniting the symbol of Christ and Christianity, which is the cross, with fire, which is the symbol of hell. And congruity between the two will never be achieved. Let us hope we come to our senses before the Klan becomes a cancerous growth too far advanced to be cured.

TIDBITS—Has our civilization become one huge, massive gadget. In light (?) of the recent power blackout, it would seem that we are no stronger than the nearest fuse box. Is it an omen or just an ironic twist of fate that the light atop the Statue of Liberty continued to burn?

When we stop learning, we stop living. Patronize your local public library.

Fall Sampling Of Soil Urged

County Agricultural Agent C. W. Overman recently received information on the number of soil samples received and analyzed for each month of the 1964-65 fiscal year. The inflow of samples is much greater during the months of January, February and March. The maximum monthly output by the laboratory is about 15,000 samples. The lab operates at maximum capacity only three months of the year.

Overman points out that many more samples could be analyzed during fall months resulting in more rapid service on a greater number of samples. In addition to this advantage, farmers would avoid the rainy weather that frequently occurs during the winter months which makes soil sampling an unpleasant task. Our fall seasons, on the other hand, are commonly open and pleasant. Soil samples can be taken more rapidly and comfortably under such conditions.

Another factor in favor of fall sampling is that the soil is in good condition for the application of lime if it is needed. All of us have seen how bulk lime spreaders can mire down in wet soils. Lime that is applied in the fall has plenty of time to react with soil acidity and reduce it for the next year's crop.

Agent Overman also indicates that a farm is a busy place in the spring and not so busy in the fall; just another reason for getting that soil tested and any needed liming done in the fall.

Girl Scout And Brownie News

Girl Scout Troop 719 met Thursday, November 11, 1965. The meeting was called to order. Then we said the pledge to the flag and gave our Girl Scout Promise. Next the scribe read the minutes; the treasurer then took up dues. Then we got the Troop Crest and worked on patrol flags. All were there.

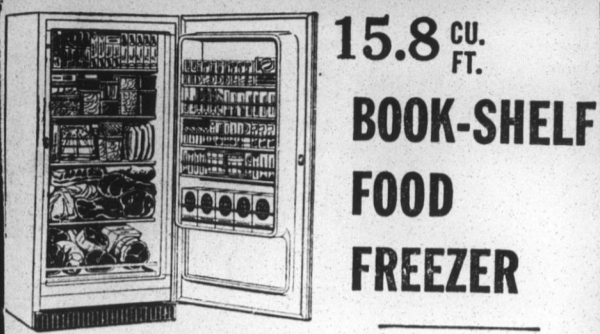
NELLE MANNING, Scribe.

77c

RATED BEST ALL WAYS BY 1,000 REPORTS OF FAMILY DENTISTS IN 116 CITIES

OLAG TOOTH PASTE

PRE-THANKSGIVING SALE



Model CA-274

15.8 CU. FT.
BOOK-SHELF FOOD FREEZER

\$229.95 W.T. Holds up to 493 lbs.

FAMOUS GENERAL ELECTRIC DEPENDABILITY

- Five Refrigerated Shelves
- Total Contact Freezing
- Straight-Line Design

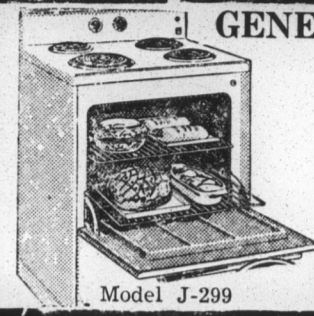
MODEL CA-274Y
\$3.00 WEEK

BIG TWO-DOOR CONVENIENCE!



TWO DOOR Refrigerator-Freezer
13.5 Cu. Ft. Net Volume

- Giant Zero-Degree Freezer stores up to 132 lbs. frozen foods
 - Automatic Defrost refrigerator
 - Four Cabinet Shelves
 - Twin Vegetable Bins
 - Coppertone, Colors or White
- Model TB-14SA
\$249.95 (With Trade)
\$3.00 week



GENERAL ELECTRIC 30-IN. WIDE

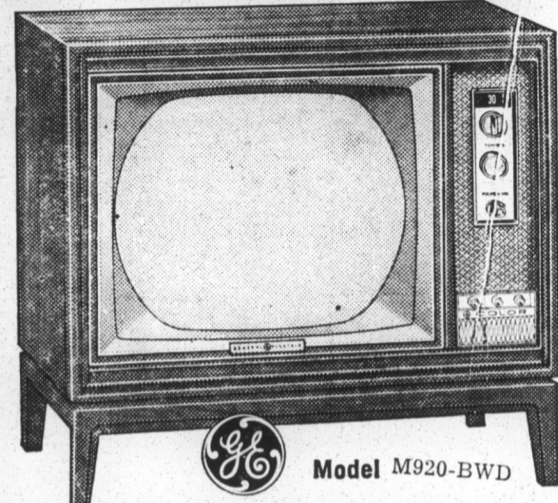
SPACEMAKER ELECTRIC RANGE

In Dark Copper
Now Only **\$139.95**
\$1.75 Week W.T.

Model J-299



"COLOR-FAST" COLOR TV



Model M920-BWD

- All-channel VHF-UHF reception with the new G-E Synchronite "82" illuminated tuning system featuring the exclusive "410" permatronic transistor tuner.
- G-E "Color-Fast" "instant color" controls for quick, convenient tuning of color strength and tint.
- G-E "Color-Fast" automatic color purifier... automatically purifies color during warm-up.

\$399.95 W.T. \$4.25 Week EASY TERMS!

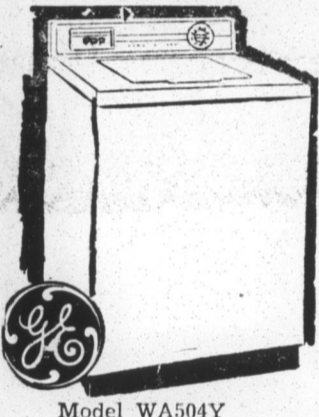
See Color TV in Goodyear's Window Every Night

Beautiful Turkey Platter

- Only -

\$1.79

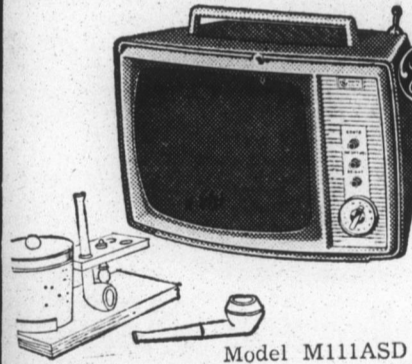
GE AUTOMATIC WASHERS



Model WA504Y

- Was \$199.95
- Big 12 Lb. Capacity
 - Water Saver Load Selector
 - Water Temperature Selector
 - Proven Filter-Flo
 - Powered Spray Rinse
 - Lint Filter

\$159.00 W.T.
\$2.25 Week

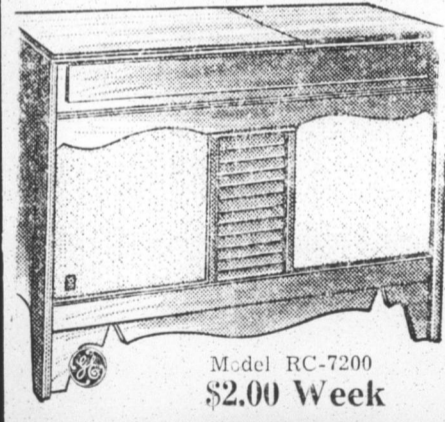


DESIGNER TV

- All-channel VHF-UHF reception with the new G-E Tandem "82" integrated tuning system featuring the exclusive "410" permatronic transistor tuner.
- Front controls and front sound—easy to see... easy to use... easy to hear.
- Attractive high-impact polystyrene cabinet.

\$89.95 \$1.50 week

Model M111ASD



G-E STEREO
in Mahogany Finish.
SPECIAL

\$129
\$2.00 Week

Model RC-7200

A TIRE DEAL FOR EVERY WHEEL

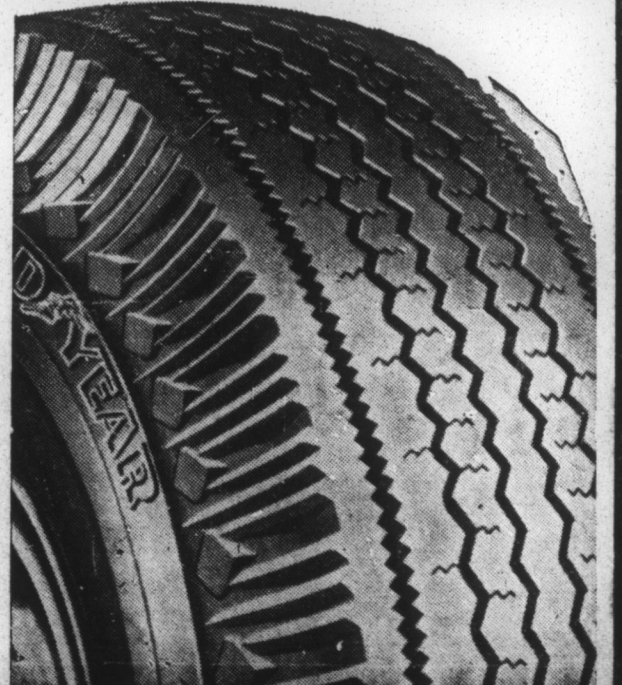
NOW NEW NYLON TRUCK TIRES

- 600x16 6 Ply \$15.95
- 650x16 6 Ply \$19.95
- 670x15 6 Ply \$18.95
- 700x15 6 Ply \$23.95
- 750x20 10 Ply \$46.95
- 825x20 10 Ply \$49.95

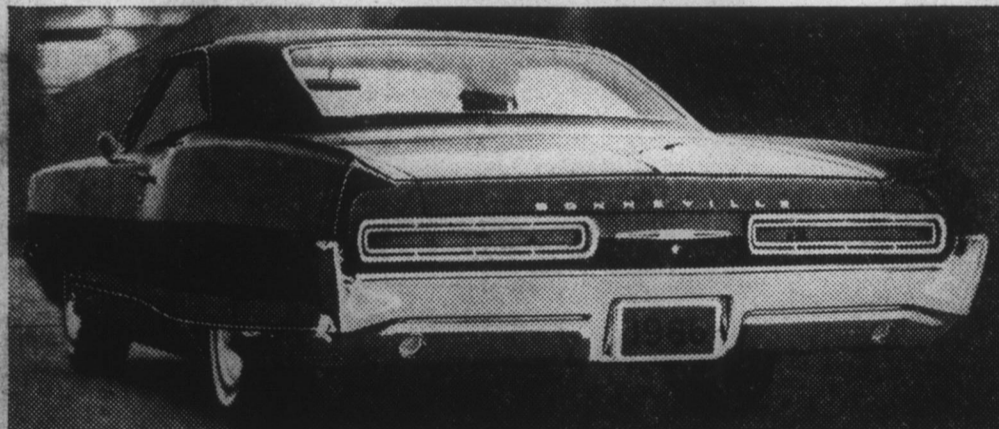
ALL PRICES PLUS TAX AND RECAPABLE CASING.

6:70x15 ALL WEATHER "42" BLACK TUBE-TYPE TIRES

2 for **\$17.00**
White Walls \$2.00 More
Plus Tax and Trade-In



What's new in tiger country? What did you have in mind?



This is our luxury tiger.



This is our economy tiger.

There are 38 more tigers in between—all Wide-Tracks, all Pontiacs/66.

Do you want a no-apologies luxury car? A 360-hp sports car with a back seat? A long-wheelbase family car that doesn't cost an arm and a leg? A sleek town car? An economy car with a 6 you'll swear is an 8 until you count cylinders? Come to tiger country. You name it, we've got it. As usual.

Special safety note: All 1966 Pontiacs include front and rear seat belts, dual-speed windshield wipers, windshield washers, outside rear view mirror, padded dash and sun visors, and backup lights for better visibility when backing up at night. Be sure to use them.

EVERYTHING'S NEW IN TIGER COUNTRY. YOUR PONTIAC DEALERS—A GOOD PLACE TO BUY USED CARS, TOO.

Colonial Motor Company of Edenton, Inc.

185-109 E. QUEEN ST.

Dealer License No. 1263

EDENTON, N. C.

Low Down Payment

GOODYEAR

Easy Payment Terms

412 S. Broad St.

Phone 482-2477

Edenton, N. C.