

# Around The Farms

BY C. W. OVERMAN, CHOWAN COUNTY EXTENSION CHAIRMAN



**Scurf On Sweet Potatoes:** Scurf is a skin disease which darkens the skin, often causing skin cracking of sweet potatoes. The disease definitely impairs the market quality and often the flavor.

Here are some facts about scurf. It is a fungus disease. Scurfy roots will produce diseased sprouts. It is contagious to new roots or plants by contact. Healthy plants may become infected by contaminated containers. Only underground portions of plants are affected. The disease lives over in soil. It is usually worse in rainy seasons. Scurf spots may enlarge in storage. Spores are easily released by handling and are carried by air.

Here are some control

measures: Use scurf-free potatoes and sprouts. Treat seed before bedding. Bed seed in clean soil, new or treated. Do not use animal manures in beds or fields. Use vine cuttings or cut sprouts, particularly for seed production. Use clean containers and storage for sprouts. Use at least a 3 to 4 year field rotation. Thoroughly disinfect storage houses, old containers and harvesting equipment before harvest.

**Home Garden Vegetable Varieties:** There are many varieties of different vegetables, some of which are superior in eating quality and also for home freezing. The following are some of the varieties with the better freezing variety listed first:

Bush snapbeans: Wade,

Tendergreen; pole snapbeans: Kentucky Wonder, 191, Blue Lake and McCaslan are preferred; for bush lima beans you may wish to use Fordhook 242, Burpee Improved Fordhook, Thorogreen or Nema-green. (Nema-green has good root-knot nematode resistance). Preferred pole lima beans are Challenger and Sieva. Detroit Dark Red and Early Wonder are preferred beet varieties. For cucumbers for pickling you may wish to use Model, Pixie or SMR-58. For slicing cucumbers, Ashley, Marketer and Polaris are recommended. Grand Rapids and Salad Bowl for leaf lettuce and Great Lakes for head lettuce are preferred. In English or Garden Peas, Laxton's Progress, Freezonia and Wando, the Wando variety stands warm weather very well. For edible field peas you may plant Dixie Lee, Brown Sugar Crowder and Princess Anne, the Princess Anne variety is a bunch-type plant, a good producer and favored by many gardeners.

For spring and summer squash my preference is Yellow Straight Neck and for winter squash Butter-nut or Table Queen. Tomato varieties in our area should be of the wilt resistant type and these include Homestead, Marion, Manapal and also Big Boy is a very good tomato.

For cantaloupes we generally need disease resistant varieties of high quality and here we have found Harper Hybrid, Burpee Hybrid, Super Market, showing very good resistance and Edisto 47 showing some resistance. Wilt resistance in watermelon is very important and varieties we have found to show good resistance are Calhoun Gray, Crimson Sweet, Sweet Princess and Shipper. Sweet corn preferred varieties are Silver Queen, Golden Security

## SENATOR SAM ERVIN SAYS



WASHINGTON—Federal aid programs have pyramided to such an extent in recent years that Congress is being forced to look at the administrative problems which have been created.

Almost daily, I receive complaints from constituents who assert that they are confused by the duplication, triplication and quadruplication of federal programs promoting health, education and welfare projects. The problem seems to grow with each Con-

### Small Accepts Texas Position

Murray J. Small, a native of Edenton, has accepted the position of administrator of East Dallas (Tex.) Hospital and East Dallas Clinic. He will assume his duties on May 4. Small has been associate administrator of Memorial Mission Hospital in Asheville.

Small, a son of the late Mr. and Mrs. Claude Small, Sr., has been associated with the Asheville hospital for 12 years.

A graduate of Wake Forest College, Small has held positions at Rex Hospital in Raleigh and Memorial Hospital in Greenwood, S. C.

gress, and many feel that tax monies could be better spent if there was less overlap of programs seeking the same objectives.

All this has come about because of grants-in aid programs have increased rapidly in numbers in the last decade. As a result, administrators in three or more different agencies may have to deal with the same application for a particular community facility or project. Worse still, agency officials sometimes cannot give comprehensive information to guide citizens in their applications for grants-in aid because they are unable to keep up with the multiplicity of federal programs.

For this reason, last year I urged the President to take steps to bring order out of the administrative chaos of conflicting jurisdiction and overlapping grants-in aid programs. The President has now recommended to Congress that legislation be enacted to permit the consolidation of such programs into new administrative systems. The Senate Intergovernmental Relations Subcommittee, of which I am a member, has before it several legislative bills that deal with this need.

One of these bills, S.

698, gives the President authority to initiate steps to consolidate germane grants-in aid programs. Some of its provisions are controversial. These relate to committee jurisdiction over consideration of reorganization plans submitted by the President. There is also the larger issue of whether Congress ought to initiate the revisions rather than vesting merger powers in the President. Thus the bill does raise some meaningful questions that will have to be resolved.

All of this legislation points to the real need for attention to the whole realm of federal aid programs, their cost and how they shall fit into a changing society. There is much argument over federal aid, federal control and tax sharing by the federal government with the states. The most immediate problem of the moment, however, concerns none of these, but how to make what we already have work better. Federal grants to the states, communities and individuals constitute a large part of federal expenditures, and as of 1965 amounted to more than \$15 billion a

This represents a 300 per cent increase in the cost of such programs since 1956. Because so many are recipients of these grants, it is safe to say that no matter what is said about them, they will be around for the next decade.

For this reason, Congress and the administration ought to eliminate the chaos now surrounding these programs by bringing some order to the administration of these programs and their vast funds. I hope that Congress will take some needed steps in this direction soon.

## Sears Let Sears Do Your HOME REMODELING

100% Financing - No Down Payment

Free Estimates

- Heating
- Fencing
- Carpet
- Roofing
- Plumbing
- Carports
- Central Air Conditioning



See or Call Steve Hampton

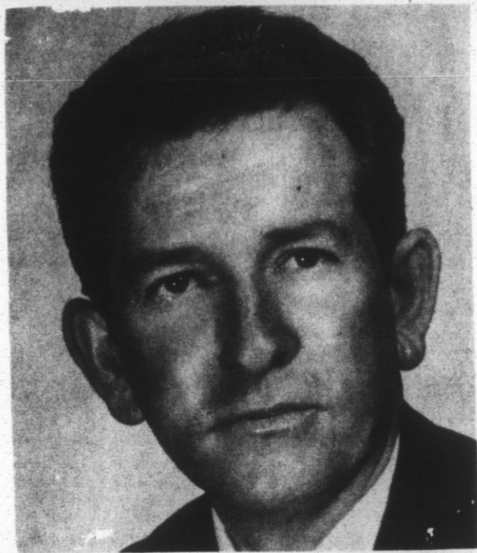
Home Phone: 482-4557

Office Phone: 482-2186

Sears, Roebuck and Co.

325 S. Broad Street

Edenton, N. C.



## Citizens of Edenton

I have worked very hard for the past three years to give the good citizens of Edenton a better voice in their government.

This work has included:

- Attending all the council meetings for the past three years.
- Studying all the actions taken by the council and the E&W Board since 1955.
- Studying the town's budget for the past years, along with the salaries of all town employees.
- I have obtained (from our local library and the University of North Carolina) books on local and state government.
- On issues where added information was needed I have written the Attorney General of N. C.

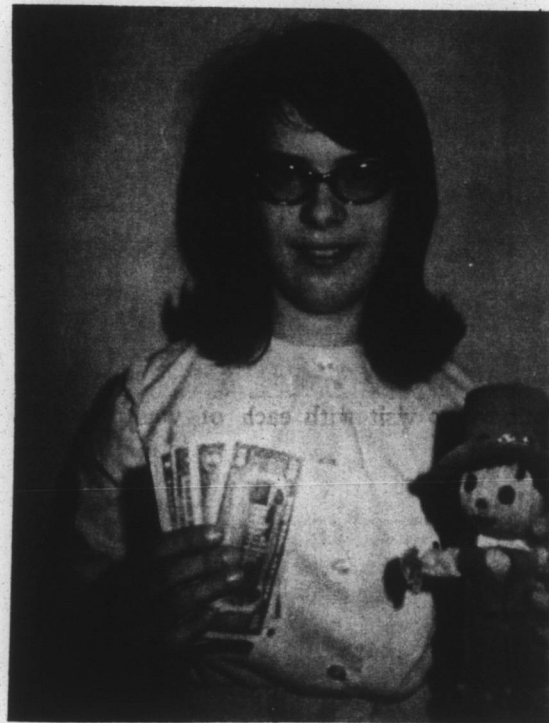
I have done all these things so as not to handicap our town in any way, were they to elect me as their Mayor.

As I have stated, I have worked for YOU the past three years without any official office. I assure you I would work even harder for each and every citizen as your Mayor.

I earnestly solicit your support for Mayor, Town of Edenton, on Tuesday, May 2.

THANK YOU,

**Roy L. Harrell**



**IN THE MONEY**—Dianne Peedin, Route 1, Edenton, makes yarn dolls as a hobby. However, her hobby paid handsome dividends last week at the Craftsman's Fair, where she sold 43 in the Youth Center. She is a granddaughter of Mr. and Mrs. Fred White, Sr., and a member of Crossroads 4-H Club.

## WEEKEND SPECIALS

— at the —

PHONE: 482-2317

Free Delivery Every Day on Orders of \$2.00 or More!

**D&M SUPER MARKET**

The store large enough for values, yet small enough to take an interest in every customer!

ROUND

**Steak or Roast lb. 79c**

DELICIOUS

**Chuck Steaks lb. . . . 49c**

FRESH GROUND

**Hamburger 3 lbs. \$1.15**

18-OZ. GLASS KRAFT'S GRAPE OR APPLE

**Jelly . . . . . each 29c**

52-OZ. CANS GIBBS

**Pork and Beans ea. 39c**

RED AND WHITE

**Fish Sticks 8 oz. box 33c**

**Potato Sticks . . can 10c**

## OPEN FRIDAY NIGHTS 'TIL 9

**SALE 24.88**

Rugged minimum-care natural redwood. Table top has new horizontal close-set surface - smoother for serving, card-playing Well-braced tip-resistant legs. End benches double as handy side tables.

**BE SURE TO REGISTER FOR FREE 1967 RAMBLER CAR! DRAWING JULY 31st ... NO OBLIGATION**

**SMART SAVINGS ON SPORTSWEAR FABRICS**

**1.47 yard**  
Usually 1.99

**FOUNDERS DAYS SALE!**

Wear-it-now fashion fabrics by Concord. Sportswear, separates, kiddie clothes - start that sewing for summer now. Interesting textures, colors! 44/45" wide. KETTLECLOTH. Prints! Solid colors! 50% Fortrel polyester, 50% cotton. Machine care - little or no ironing. Shrinkage controlled. HEATHERSPUN. That wonderful 85% cotton, 15% acetate for shorts, boy suits, active sportswear. Rich, vibrant colorings. HOMESPUN PRINTS. Top texture on the fashion scene. Zippy prints set the gay summer pace. 100% cotton.

**BELK-TYLER'S OF EDENTON**