



Savings Bonds Sales Reported

Menus at the Ernest A. Swain Elementary School lunch room for April 16-20 will be as follows:

Tuesday—Luncheon meat, carrot and cabbage salad, cheese slices, green beans, school baked rolls, butter, apple pie and milk.

Wednesday—Spanish rice with beef, buttered corn, peanut butter delight, corn bread, butter, orange juice and milk.

Thursday—Beef stew with onions, carrots and potatoes, turnip greens, school baked rolls, butter, jello with whipped topping and milk.

Friday—Hamburgers, cole slaw, French fries, cat-sup, school baked rolls, butter, cheese slices, peach pie and milk.

Saturday—Tuna salad, potato chips, garden peas, school baked rolls, butter, grapefruit sections and milk.

Combined sales of U. S. Savings Bonds and Freedom Shares for February were \$5,569,999, up 4.2 per cent over February, 1967—the best February sales since 1945.

Cumulative sales of Savings Bonds and Freedom Shares for the first two months of this year were \$11,506,523, the largest total for the comparable two months since 1947 and is an increase of 2.9 per cent over the same period a year ago. This represents 16.7 per cent of the state's 1968 dollar goal of \$68,800,000.

Sales in Chowan County for the month of February amounted to \$5,667. Combined January-February bond sales amounted to \$15,432, which is 15 per cent of the county's dollar quota for 1968 of \$103,200, according to R. Graham White, Chowan County volunteer chairman.

RESPONSIVE



The slightest touch elicits an immediate response from a sensitive plant. Here seedlings are growing in a pre-planted container; can be potted later for house use or grown outdoors.

The most delicate touch of a fingertip on a single leaflet of a sensitive plant is sufficient to cause that leaflet to fold up in response.

Run the tip of a finger down the stem from which leaflets grow and all of them collapse, face to face, one against another. Hit the stem, no matter how gently, and it will instantly bend downward.

The person who named the sensitive plant *Mimosa pudica* in botanical Latin must have had a sense of humor for *Mimosa* comes from the Greek word "mimos", an actor, while *pudica* means modest. A modest actor it is indeed—retreating at a touch.

This physiological response of the true leaves to touch makes the sensitive plant one of the most remarkable in the plant kingdom.

It has been a source of wonder to successive generations of children who like nothing better than to watch the plant react to their manipulations. Oddly, the first two leaves to appear (the seed leaves) do not respond to touch.

Of course these startling movements do the plant no harm. It recovers within minutes (faster if it is growing in full sun), but it may be several hours before it performs again.

Sensitive plant, a native of the sub-tropics, may be grown from seeds for use as a house plant or in the garden. Its only needs are a sunny spot and constant moisture in the soil.

The fine, lacy leaves are pretty, the ball-shaped pink to lavender flowers dainty, the plant is easy to grow. So easy that it is available in pre-planted containers at your supermarket. Grow it yourself and be sure to send a container to the nearest school so the children may grow and watch this wonder.

MINING HISTORY

The first mining in the Sudbury District of Ontario began in 1886 when some 3,000 tons of copper ore were removed. Today the area is the world's leading source of nickel, yielding nearly 20 million tons of ore annually.

ALL-CLIMATE POWER

Vented rechargeable nickel-cadmium batteries can be charged and operated effectively at temperatures ranging from 65 degrees F below zero to those near the boiling point of water.

Modern Wisdom: A fuss in times saves nine.

RE-ELECT

W. E. (Winks) BOND
COMMISSIONER
FIRST TOWNSHIP

16 Years of Experience of Service

To Chowan County

**YOUR VOTE AND SUPPORT
WILL BE APPRECIATED**

Mr. Farmer

SEE US FOR YOUR SEED PEANUT SHELLING

We Are Now Open For Business - Telephone 482-2423

WE HAVE Stacked Farmers Stock ... AND ...

Certified Peanuts For Sale

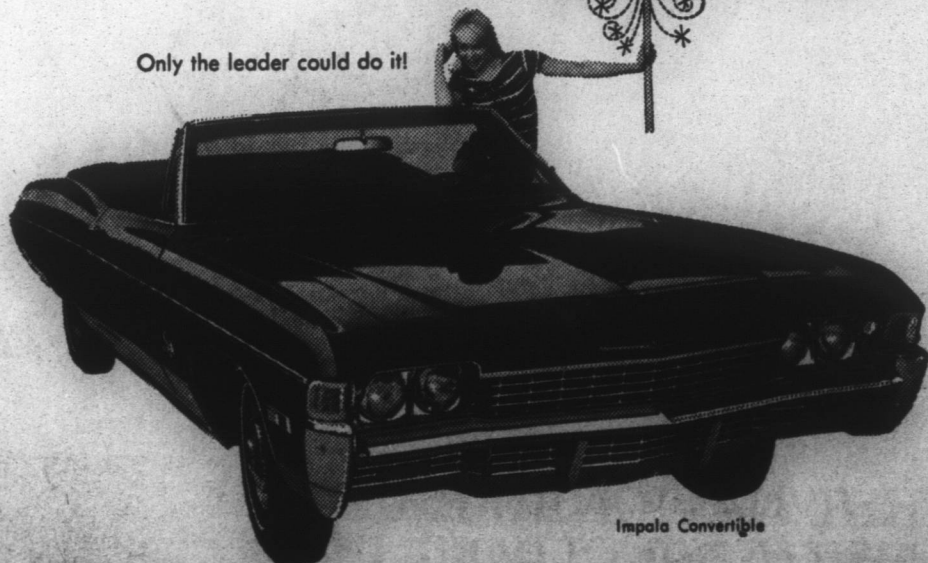
Chowan Storage Company

W. Carteret St. — Edenton, N. C.
All Seed Receives Our Personal Attention ... A Trial Will Convince You!

Unprecedented! Happening now at your Chevrolet dealer's, an explosion of extra buying power.

'68 savings explosion

Only the leader could do it!



Impala Convertible

You've never seen savings like this on '68 Chevrolets and Chevilles. You save on America's most popular V8s with automatic transmissions. Check these Bonus Savings Plans.

- Any Chevrolet or Chevelle with 250-hp Turbo-Fire V8, Powerglide and whitewalls.
- Any regular Chevrolet with 250-hp Turbo-Fire V8, Turbo Hydramatic and whitewalls.
- Now, for the first time ever, big savings on power disc brakes and

- power steering when you buy any Chevrolet or Chevelle with V8 engine.
- Buy any Chevrolet or Chevelle V8 2-door or 4-door hardtop model—save on vinyl top, electric clock, wheel covers and appearance guard items.



Williams Of E. City Places Prints In Show

RALEIGH—Photographer Jack Williams of Elizabeth City has placed two prints in the Court of Honor, best in show, at the annual convention of the Professional Photographers of North Carolina. More than 600 prints were judged by master photographers of the Professional Photographers of America, who

accepted all eight of Williams' prints for the salon exhibition. Williams' Court of Honor prints were a toned bridal study of Mrs. Kathryn Pool Jackson of Elizabeth City and a direct color pictorial, "Yellow Leaves." In three years Williams has won more than 100 professional awards throughout

the nation. Accepted also were Williams' portrait studies of college student Robert Fallis of Edenton; Brack Dawson, business executive of Washington; a children's portrait of Patti and Kathy Sawyer of Elizabeth City; a bridal profile of Mrs. Jane Stevenson Shield of Newport News, and two direct

color candid, "Making a Wish," and a group study from the wedding of Kitty Laughinghouse and James Craft of Elizabeth City and Daytona Beach.

Man originates in muck, wades a while in muck, makes muck, and in the end returns to muck. —J. F. C. Schier.



VOTE FOR

Naomi E. Morris

— FOR —

Judge Of Court Of Appeals
(ONLY JUDGE EAST OF RALEIGH)
In The

Democratic Primary—May 4th

JUDGE NAOMI E. MORRIS

- * Born in Spring Hope, North Carolina, 1921. Lived in Wilson, N. C. since one year old.
- * Graduated with honors from Atlantic Christian College, 1943. Worked as legal secretary for six years. Graduated with honors from U. N. C. Law School, 1955.
- * Practiced law as associate 2 years and partner 10 years in Wilson law firm, 1965-67. Now serving as Judge of Court of Appeals under gubernatorial appointment.
- * Baptist. Active worker with young people. Member State Democratic Executive Committee.
- * Member Pilot Club. Past President Junior Woman's Club and Woman's Club. Former member Salvation Army Advisory Board. Single. Resides with mother in Wilson, N. C.

PAID FOR BY FRIENDS OF JUDGE MORRIS



Ladies' - Size 30 to 40
Permanent Press Blouses

Only \$1.94

Children's Spring Hats

Only \$1.79

Size 4 to 12
Children's Dresses

Only \$1.94

Men's Sport Shirts
Small, Medium, Large

now 99c

Easter Eggs & Novelty Candy

1c to \$1.19

Lawn Chairs

Only \$2.76

Size 32 to 40
Ladies' Slips

now 96c

Children's Tennis Shoes
All Sizes

Only \$1.00

Ladies' Half-Slips
Small, Medium, Large

now 86c

Ladies' Size 10 to 18
Dacron and Cotton Skirts

Only \$2.94

Plush Toys

98c to \$3.98

Live Easter Lilies
2, 3 and 4-Bloom

Only \$1.99

Size 6 to 16
Boys' Sport Shirts

now 99c

Easter Baskets

39c to \$4.97

Easter Wreaths

\$1.94-\$2.94 to \$3.94

Playtex Brassieres

\$2.50 to \$3.50

Come In And Register For Free Wagon Filled With Easter Goodies To Be Given Away Saturday, April 13 at 5:00 P. M.

WE CARRY A FULL LINE OF QUALITY MERCHANDISE AT ALL TIMES AT DISCOUNT PRICES!

GENE'S 5 & 10c STORE

"YOUR FRIENDLY DISCOUNT STORE"

S. Broad Street

Edenton, N. C.