

## County News

By Mrs. Roland Evans  
Sympathy goes out to the Virgie Morris family, the Sydney Smith family, the H. A. Campen family and the Morris family.  
Mrs. Pearl Moore is in the hospital.  
Mrs. L. E. Francis is reported unimproved.

### Sunday School Lesson

Continued from Page 4

right. Hindsight, we too often find, is more enlightening. But these are experiences, from which we learn.

Whatever our shortcomings, and our sins, we are never denied God's love and forgiveness. The doors of His houses are always open to us, and His teachers anxious and willing to fulfill their responsibilities towards God and mankind.

Through their efforts we are enabled to bring our lives into harmony with God's central purpose. We need only be willing to confess our sins and our weaknesses, and ask His divine help in making our lives an example of obedient living, inspiring others with whom we come in daily contact, reaching out to them a helping hand along the way.

(These comments are based on outlines of the International Sunday School Lessons, copyrighted by the International Council of Religious Education, and used by permission).

R. A. and G. A. Camp is being conducted at Chowan College this week.

The Center Hill Baptist Church has called a new pastor, Rev. M. B. Motts of Gastonia.

Little Miss Helen Jones of Maryland, who is vacationing at Sandy Point, visited with the 10 year-old Junior girls at Edenton Baptist Church on Sunday. Mrs. Martha Harrell was hostess at a party on Tuesday night.

Mrs. Nell Byrum, Martha Harrell, Sarah Coward, Maxine Bunch, Vivian Wheeler, Ella Potts and Mrs. Ole Neilson are on vacation this week.

An Associational W.M.U. Leadership Course will be conducted at Center Hill Baptist Church Tuesday, July 23 from 9:00 A. M. to 3:00 P. M.

Miss Ann Brown and parents vacationed at Virginia Beach recently.

Mrs. Vivian Wheeler and family are vacationing at Nags Head this week.

Mr. and Mrs. Fletcher Perry of Suffolk visited Mr. and Mrs. Roland Evans on Sunday.

### Saturday Night Accolade

Teacher—What is the Order of the Bath?  
No answer.

Teacher—"Come, some of you must know what the Order of the Bath is."

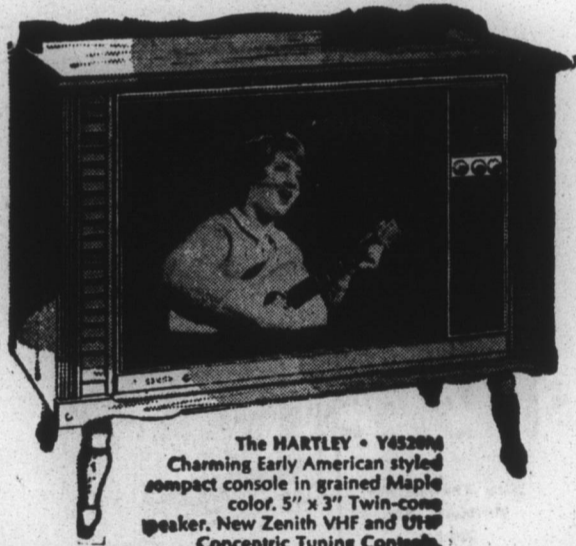
Pupil—"Well, at our house it's pa first, then ma, then us kids and then the hired girl."

### Why not get the best...

COLOR TV'S LARGEST PICTURE, SLIMMED INTO BEAUTIFULLY COMPACT CABINETRY... NEW 1969



## COLOR TV



The HARTLEY • V452000 Charming Early American styled compact console in grained Maple color. 5" x 3" Twin-conc speaker. New Zenith VHF and UHF Concentric Tuning Controls.

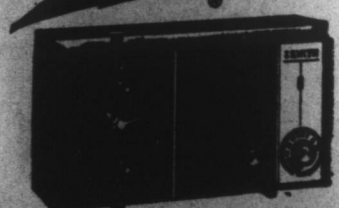
THE MOST EXCITING NEW FEATURE IN COLOR TV

### AFC Zenith Automatic Fine-tuning Control

Zenith's AFC tunes color television picture-perfect at the flick of a finger. Just flip the switch once and forget it—because it not only tunes the color picture—but keeps it tuned as you change from channel to channel. And it even perfects your fine-tuning on UHF channels—automatically.

- Zenith High Performance Handcrafted Color TV Channels
- Exclusive Zenith Super Gold Video Guard Tuning System
- Zenith Sunshine® Color TV Picture Tube

ZENITH The quality goes in before the name goes on



### AM CLOCK RADIO

- Touch 'n Snooze Control
- Clock Dial Light • Buzzor Alarm

The ENVOY • Model K178. New, "modern decor" styling. Sleep switch lets radio play up to 60 minutes before turning off automatically. Cabinet in choice of Beige and White, Charcoal Brown and Beige.

Zenith - The quality goes in before the name goes on

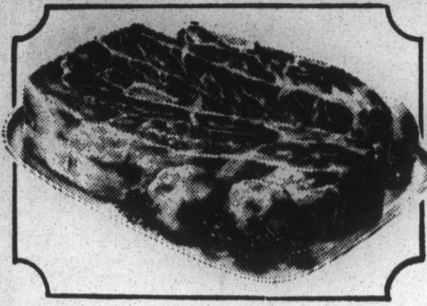
Jackson's Radio & TV Service

W. Eden Street Phone 482-3519

### Sizzlin' Good "Super-Right" Meats!

"SUPER-RIGHT" GOVERNMENT INSPECTED HEAVY CORN-FED BEEF

# ROASTS



BONE-IN  
**CHUCK 37<sup>C</sup>**  
★ LB.

PRICES IN THIS AD ARE EFFECTIVE THRU SAT., JULY 20th

"SUPER-RIGHT" HEAVY CORN-FED BEEF  
**Boneless Chuck Roast Lb. 57<sup>c</sup>**

"SUPER-RIGHT" HEAVY CORN-FED BEEF  
**CUBED CHUCK STEAK Lb. 89<sup>c</sup>**

"SUPER-RIGHT" HEAVY CORN-FED BEEF  
**GROUND CHUCK STEAK Lb. 59<sup>c</sup>**

"SUPER-RIGHT" HEAVY CORN-FED BEEF  
**SHOULDER STEAK Bone-In Lb. 65<sup>c</sup>**

"SUPER-RIGHT" HEAVY CORN-FED BEEF  
**Boneless Shoulder Roast Lb. 65<sup>c</sup>**

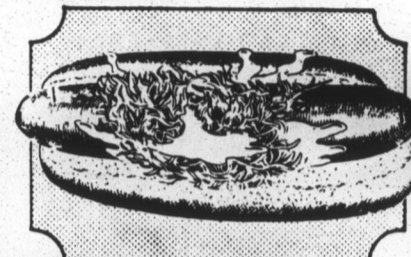
"SUPER-RIGHT" HEAVY CORN-FED BEEF BONELESS  
**STEW BEEF Lb. 59<sup>c</sup>**

"SUPER-RIGHT" LEAN, FRESHLY  
**GROUND BEEF Lb. 49<sup>c</sup>**

"SUPER-RIGHT" FRESHLY FROZEN  
**CHOPPED BEEF STEAKS 2 Lb. Pkg. \$1<sup>39</sup>**

ALLGOOD GOVERNMENT INSPECTED  
**Sliced Bacon 2 Lb. Pkg. 99<sup>c</sup>**

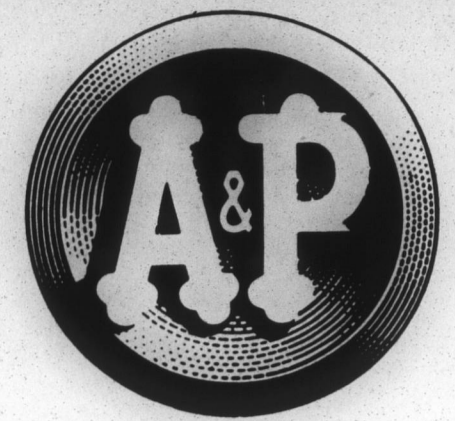
CAP'N JOHN'S FROZEN  
**Shrimp Cocktail 3 4-Oz. Jars 89<sup>c</sup>**



ANN PAGE SALAD STYLE  
**MUSTARD 2 Lb. Jar 29<sup>c</sup>**

"SUPER-RIGHT" GOVERNMENT INSPECTED  
**FRANKS 49<sup>C</sup> ALL BEEF 59<sup>C</sup>**  
All Meat 1-Lb. Pkg.

### we care



"SUPER-RIGHT" SHORT SHANK SMOKED

**PICNICS 39<sup>c</sup>**  
4 to 8 Lb. Avg. WHOLE Lb.

SMOKED HALF PICNIC 2 TO 4 LB. AVG. Lb. 43<sup>c</sup>

SMOKED HALF PICNIC SLICED Lb. 49<sup>c</sup>

COUNTRY TREAT EXTRA LEAN WHOLE HOG SAUSAGE 1-Lb. Roll 59<sup>c</sup>

### Summer Savings! A&P Groceries!

YELLOW CLING HALVES — A&P BRAND

**PEACHES 3 1-Lb. 13-Oz. Cans \$1.00**  
GUARANTEED TO PLEASE YOU!

**A&P APPLE SAUCE 3 1-Lb. Cans 49<sup>c</sup>**

**IONA PORK & BEANS 10½-Oz. Can 10<sup>c</sup>**

**SULTANA WHOLE TOMATOES 2 1-Lb. Cans 37<sup>c</sup>**

• GRAPE • ORANGE • TROPICAL PUNCH OR • ORANGE-PINEAPPLE

**A&P DRINKS 3 46-Oz. Cans \$1.00**

### Oven Fresh Jane Parker Buys!

JANE PARKER — DESSERT PERFECT! MARBLE POUND

**CAKE 33<sup>C</sup>** 15-Oz. Pkg.

JANE PARKER — READY TO SERVE  
**BLACKBERRY PIES 1-Lb. 8 Oz. Pkg. 39<sup>c</sup>**

JANE PARKER — SNACK PERFECT!  
**PEACH CRUNCH CAKE 1-Lb. Pkg. 49<sup>c</sup>**

JANE PARKER — VALUE PRICED  
**BABKA COFFEE CAKE 1-Lb. 14 Oz. Pkg. 89<sup>c</sup>**

JANE PARKER COUNTRY STYLE ENRICHED BUTTERMILK

**BREAD 2 1½ LB. LOAVES 49<sup>c</sup>**

NO LIMIT ON PURCHASES AT A&P



MILD AND MELLOW  
**EIGHT O'CLOCK**

1-LB. BAG 3-LB. BAG  
**49<sup>c</sup> \$1.45**  
SAVE 16<sup>c</sup> SAVE 44<sup>c</sup>

5-DELICIOUS FLAVORS — MARVEL  
**ICE MILK ½-Gal. Ctn. 43<sup>c</sup>**

A&P WHOLE LEAF OR CHOPPED  
**SPINACH 10-Oz. Pkg. 10<sup>c</sup>**

A&P "OUR FINEST" SHOE STRING  
**POTATOES 2 20-Oz. Pkgs. 39<sup>c</sup>**

A&P "OUR FINEST" POTATO  
**MORSELS 2 1-Lb. Pkgs. 39<sup>c</sup>**

SULTANA  
**Strawberry PRESERVES**

2½-Lb. Jar **89<sup>c</sup>**

SULTANA  
**Sandwich SPREAD**

1-Qt. Jar **49<sup>c</sup>**

ANN PAGE  
**MUSTARD**

1-Lb. Jar **23<sup>c</sup>**

ANN PAGE  
**Barbecue SAUCE**

1-Lb. 12-Oz. Jar **55<sup>c</sup>**

OUR OWN  
**TEA BAGS 48 Count 53<sup>c</sup>**

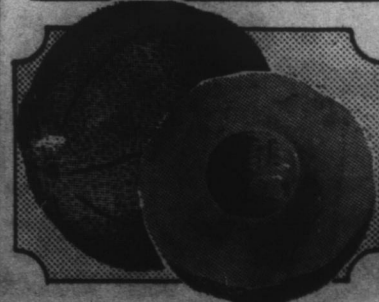
### Tasty Pickin's—Fresh Produce!

★ YOUR CHOICE SALE ★  
• WHITE SEEDLESS GRAPES  
• CALIFORNIA RED PLUMS  
• FRESH, SWEET NECTARINES  
**3 LBS. 89<sup>C</sup>**

SERVE HOT! TOPPED WITH BUTTER  
**YELLOW CORN 8 Ears 59<sup>c</sup>**

SERVE ICE COLD! SWEET, RIPE  
**WATERMELONS Each 79<sup>c</sup>**

U. S. NO. ONE WHITE  
**POTATOES 10 Lb. Bag 59<sup>c</sup>**



IDEAL FOR BREAKFAST! SWEET, RIPE,

**CANTALOUPE 3 Large 27-Size \$1.00**