

## Shopping With You In Mind

By KATE

You won't want to miss the Bonanza of values this weekend at the **P & Q Super Market**. Again you can get tender frying size chickens at 27c a pound. Gwaltney's Signal brand bacon is special this week at 49c and there's extra special prices on round steak, cube steak, T-bone and sirloin steaks and they are so delicious, cooked on the charcoal grill! Good prices at the produce counter include 20 pounds of potatoes for 69c; celery at 10c and peaches at 10c a pound—of course, at the **P & Q Super Market**.

Right now, all parents are thinking about buying those necessary back-to-school clothes, as the opening of school is only several weeks away. At **Rose's**, right now, there's an excellent selection of children's shoes, from small sizes up to size 3, and they're only \$2.99 a pair. Boys' and girls' gym shoes are specially priced at only \$1.99 a pair. Boys' perma-press pants in sizes 6 to 18 are available for only \$2.94 a pair. For both boys and girls, there's attractive outfits for school at **Rose's**.

**Mitchener's Pharmacy** has just received a new and

fresh shipment, and packed in dry ice for freshness, of Hollingsworth's famous chocolates. Also a shipment of that delicious Russell Stover candies is expected to arrive this weekend. So satisfy your sweet tooth and make the "love in your life" happy with delicious candy from **Mitchener's Pharmacy**.

In just a few weeks school will begin, so now is the time to have your children's school clothes laundered or dry cleaned at the **Edenton Launderette & Car Wash**, right beside the A & P store. For just \$2.25 you can clean 10 pounds of clothing, which certainly gives a big boost to your budget. So take advantage of this easy way of laundering and dry cleaning at **Edenton Launderette & Car Wash**.

Since the fall season brings on radical changes in living, why not begin now with planning for fall? For instance, with the back-to-school trend, you can get a big assortment of values at the **Western Auto Store**, which will save you money in many ways. Portable typewriters for the college student, new bicycles for transportation for all stu-

dents, ball point pens, luggage, foot lockers and a 16-volume World University Encyclopedia—all at bargain prices during the **Western Auto Store's** Bargain Day Sale.

**Ross Jewelers** has new shipments of merchandise arriving daily, with all the attractive gift items, such as silver holloware in many beautiful and different pieces for your selection. Some of the newest innovations in jewelry, including the popular medallions for men and the mini bracelets for the young fashions and other beautiful bracelets, pendants and earrings are for you now—at **Ross Jewelers**.

Those fashionable English tweeds by David Ferguson, now being shown at **Tarkington's** are just the very right "thing" for fall. Woolen skirts, sweaters, suits and slacks in combinations of checks and plaids, will just make you WANT to buy them. There's a good selection of Leslie Faye fashions, with three-piece suits and dresses and coats to match. By the way, don't forget the Salesman's Sample Sale August 28-29 and 30 at **Tarkington's**.

**Gene's 5c and 10c Store** sold out on their popular assortment of luggage, but again they have received a complete new shipment, ready just in time for the college student or for those of you intending to take a planned autumn vacation. This luggage, in shades of blue and green, comes in sizes of large, medium and train cases—and for the men there's the popular attache case. New basketball shoes are available, too, as well as a new shipment of men's long sleeve shirts at \$1.64 or 2 for \$2.00 at **Gene's 5c and 10c Store**.

As I reminded you in my column, you really will feel that cool breath of autumn when you shop in the **Betty Shoppe**, where fall has already arrived. Lovely autumn shades in Butte Knit suits and dresses and the fashionable R & K Knits in dresses, costume suits and ensembles. Versatility is the theme in the Tattersall Plaids in skirts, jackets and slacks to match—at the **Betty Shoppe**.

If you're getting that college student ready for the coming year, away from home, it'll help you a lot to get one of those Label-Mates from **Hollowell's Rexall Drug Store**. Make your own labels for the complete wardrobe, including luggage—by the way, you can get refills for this handy innovation. Another handy item for the student is the ball point pen by Paper Mate, Sheaffer and the Bic Pen at **Hollowell's Rexall Drug Store**.

As the season changes, every home owner likes to paint up and spruce up his home for beauty and preservation. At **Hughes-Parker Hardware Company** you can get the best of Sherwin Williams paints for the outside and inside of your home. Let me remind you, too, that you can get the famous Black and Decker tools for the handy-man around the house. And if you're interested in fishing—get all your tackle from **Hughes-Parker Hardware Company**.

### Field Events Slated In Area

A corn, soybean and swine field day is scheduled at the Tidewater Research Station on August 29. The station is located approximately four miles east of Plymouth on U. S. 64.

The program will begin at 9:30 A. M. with brief remarks by J. W. Smith, superintendent of Tidewater Research Station; Dr. R. L. Lovvorn, director of research, N. C. State University, and C. D. Thomas, director of research station, N. C. Department of Agriculture.

The morning tour of research work will begin at 10 o'clock. The afternoon tour will begin at 1:30 o'clock. Topics will include soybean and corn breeding, varieties, weed and insect control, row spacing, plant population and fertility studies. Farmers and others interested will also have the opportunity to observe swine breeding and management work.

Between the morning and afternoon tours a dutch luncheon of chicken or pork barbecue will be served and there will also be a machinery exhibit to observe.

This field day should be of interest to many Chowan farmers and we urge as many as possible to attend. Harry Venters says.

#### San Francisco Fire

NEW YORK—The earthquake and fire which struck San Francisco April 18, 1906, destroyed 28,000 buildings and did an estimated \$350 million in damage, according to the Insurance Information Institute.

### What Are You Doing This Weekend?

Why not support your local Chamber of Commerce by spending an enjoyable hour or two visiting one of the many exciting and historic attractions which has helped make the Albemarle Area the fascinating place it is today?

We'll bet there's a point of interest no more than 20 minutes from your home . . .

FOR INSTANCE — HAVE YOU SEEN the highway marker in Hertford honoring John Harvey, five times speaker of the Colonial Assembly?

Save time and steps by telling your friends of your interesting tour with an EXTENSION TELEPHONE!

**The Norfolk & Carolina Telephone & Telegraph Co.**

### VIRGINIA'S FIRST PERFORMANCE TESTED ALL BREED BOAR SALE

Tidewater Sales Barn -- Rt. 35, one mile North of COURTLAND, VIRGINIA

Wednesday, August 28, 1968 --- 7:30 p.m. EDT

All boars had to meet the following requirements:

From litter of 8 or more. Days to 200-lbs.: 160 days or less.  
Backfat probe at 200-lbs.: 1.4 in. or less. Loin eye Sonaray: 4.00 sq. in. or more.  
Littermates tested in Virginia Swine Evaluation Station:  
3.25-lbs. feed per pound gain or less. 50% or more lean cut.

FOR CATALOG, WRITE

J. F. JOHNSON, Extension Agent (OR)  
COURTLAND, VIRGINIA

CHARLES GOG. ER. V. P. I.  
BLACKSBURG, VIRGINIA

## FREE - S & H GREEN STAMPS - FREE

DRAWING SATURDAY NIGHT, AUGUST 24, 1968

FIRST PRIZE: 1200 STAMPS - 20 SECOND PRIZES OF 100 STAMPS EACH!

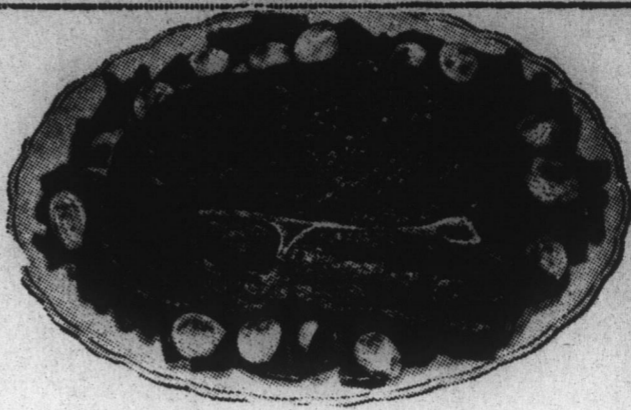
Nothing To Buy - Just Register - Adults Only - Double Stamps Monday



BLADE

CHUCK ROAST

lb. 37c



Swift Premium  
Boneless - Rolled  
CHUCK ROAST

lb. 53c

Full Cut Chuck ROAST . . . . . L B 45c

Chuck STEAKS . . . . . L B 49c

Ground CHUCK . . . . . L B 59c

5 to 7-lb. Average Swift's

HENS  
lb. 33c

4 TO 6-LB. AVERAGE GWALTNEY FRESH PORK

PICNICS  
lb. 35c

Gwaltney's First Cut

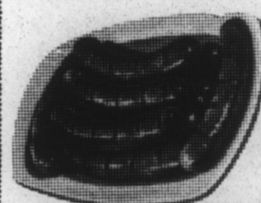
Pork Chops  
lb. 49c

11 TO 13-LB. GWALTNEY'S

OLE TOWNE  
COUNTRY STYLE  
HAMS  
lb. 75c

1-LB. CYPRESS SLICED

BACON lb. 39c



GWALTNEY'S  
FRANKS lb. 53c



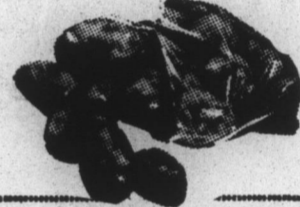
165 Size Sunkist

LEMONS  
6 for 29c



Yellow Skin

ONIONS  
3 L Cello B Bag 29c



U. S. No. 1 - White

POTATOES  
20 lbs. 69c

Green Crisp

CABBAGE lb. 6c

Fancy

CELERY stalk 12c

6-oz. Maxwell House INSTANT

COFFEE  
jar 79c

29-oz. Mission SLICED

PEACHES  
can 29c

22-OZ. RAGGEDY ANN

SPRAY-ON STARCH 39c

Qt. Duke's MAYONNAISE

jar 49c

No. 303 White House

APPLE SAUCE 2 CANS 35c

NO. 303 LIBBY

Garden Peas . . . . . can 19c

8-OZ. PATTIE DEW FRESH

Oleo . . . . . 3 patties 25c

2-LB. FROZEN

French Fries . . . . . bag 29c

52-oz. Gibbs

Pork 'n Beans

4 1/2-OZ. NABISCO  
CHIPSTERS  
POTATO  
SNACKS . . . . . PKG 39c

39c



FREE -- FREE  
50 EXTRA STAMPS

WITH THIS COUPON AND

PURCHASE OF \$10.00 OR MORE

Phthisic's Super Market, Inc.

LIMIT: 1 PER FAMILY

(Expires August 24, 1968)

# Phthisic's Super Market, Inc.

WEST QUEEN STREET - EDENTON, N. C.

PRICES IN THIS AD EFFECTIVE THROUGH SATURDAY, AUGUST 24, 1968