

## 4 Current Broadway Hits Coming To Norfolk

Four great Broadway stage hits will be coming Friday and Saturday, February 14 and 15; and the smash musicals and two comedy hits, beginning with "Cactus Flower," still thriving on Broadway with a two and a half year run so far, coming to the Center Theater on September 20 and 21.

The Abe Burrows play will star Jeanne Carson and Biff McGuire.

This will probably be the first time in history that four hit shows, all still running to capacity houses in New York, will tour the country in one season. It is really bringing the "best of Broadway" to the area. The series will be presented by Broadway Theater Attractions of Norfolk in conjunction with the Department of Community Promotion, Norfolk.

The other three shows will include Robert Anderson's hilarious "You Know I Can't Hear You When the Water's Running," starring Imogene Coca and King Donovan, on October 18 and 19; one of the greatest musicals of the decade, "Fiddler on the Roof," currently in its fifth year on

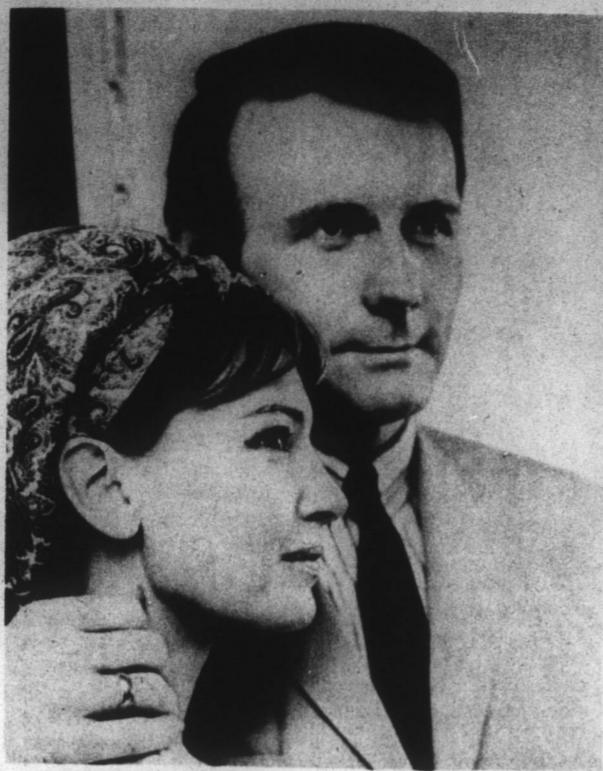
Broadway, coming here Friday and Saturday, February 14 and 15; and the unprecedented smash musical hit, "Man of La Mancha," starring David Atkinson, who has just left as star of the Broadway company to recreate the dual roles of Cervantes-Don Quixote in this touring production. This closing show of the season will come to Norfolk March 7 and 8.

There will be three performances of each of the four Broadway hits. Friday nights at 8:30 and on Saturdays at 2:30 and 8:30.

Mail orders for money-saving season tickets are now being taken at the Center Theater box office, Ninth and Granby Streets, Norfolk.

Season tickets for evening performances will be

\$24 for the first 20 rows of the orchestra and the loges; \$20 for the remainder of the orchestra and the first 10 rows of the balcony, and \$16 for the remainder of the balcony. Matinee prices are \$20, \$16 and \$12. Season tickets can be charged to your charge account at Rice's.



TO APPEAR IN NORFOLK — Jeannie Carson and Biff McGuire, a husband-and-wife acting team, will co-star in a production of "Cactus Flower," coming to Norfolk's Center Theater September 20-21. The play is one of four Broadway stage hits being brought to the area.

## Ocean Hiway Meeting Set

The Ocean Hiway Association which was organized in 1935 to develop and promote the Ocean Hiway between New York and Florida, will hold its fall regional meeting at the Carolinian Hotel at Nags Head October 20-21.

Members, representing a cross-section of the business communities in North Carolina, South Carolina and Georgia, will attend the two day meeting to develop promotional pro-

grams for the winter and spring seasons.

According to Curtis Brooks of Norfolk, president of the Ocean Hiway Association, the regional meeting will attempt to develop some type of "package plans" for motorists in an attempt to compete with the airlines and other highways which serve the north-south traveler.

Discussing the package plan idea, Brooks cited the fact that airlines, working in conjunction with hotels and motels in Florida, have developed and are promoting six and seven day vacations in Florida for as little as \$52.00 plus airfares. Brooks said that, "if we are to get our share of the travel market, some competitive plan must be developed and promoted extensively. To develop the package plan and then determine how and where to promote it will be our prime objective at this meeting."

Brooks went on to say that John Griffin, executive director of the association, has several proposals to be considered by the members during the meeting.

### HARVEST SUPPER

A chicken harvest supper will be held Saturday evening at Center Hill-Cross Roads Volunteer Fire Department. Plates will be served from 5 P. M. to 8 P. M.

## Metropolitan Life Ins. Company

Has Openings In Edenton

for Two Agents

on established Insurance Agencies. Applicants must be high school graduates between ages 21-45... Guaranteed salary plus fringe benefits.

Write

Mr. K. R. Polk  
P. O. Box 336  
Edenton, N. C.  
For Interview

For Quick Results, Try A HERALD CLASSIFY

## Haste Supports Jim Hardner

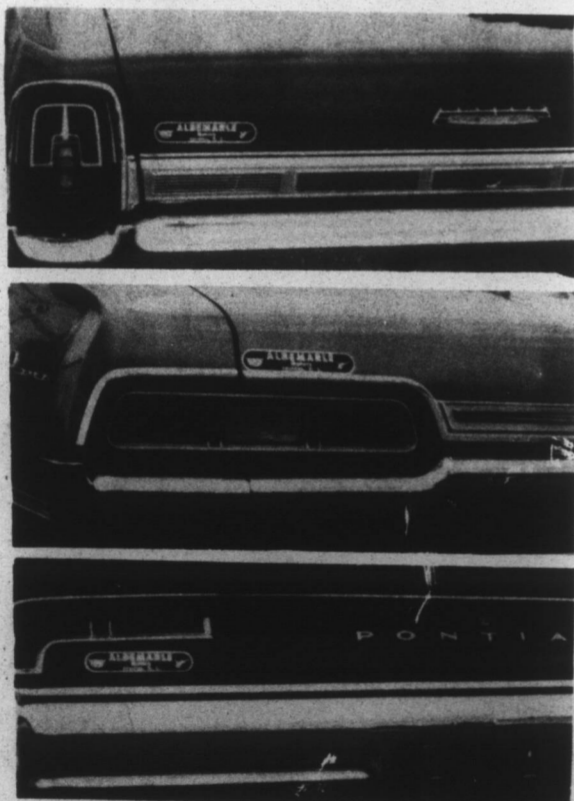
Gubernatorial candidate Jim Gardner announced today the support for his candidacy by T. E. Haste, Jr., of Hertford.

Haste is a member of the Rotary Club and is the president of the Albemarle Area Development Association.

Rep. Gardner stated, "I am very pleased to have

Mr. Haste join with me in building a better North Carolina. Throughout North Carolina, concerned Democrats are recognizing the fact that the problems facing us today are greater than any political party. I greatly appreciate Mr. Haste putting aside party lines and joining with me in this common cause."

**They All Appear The Same From The Front . . . . . But!**  
**TAKE A LOOK AT THE REAR**



YES SIR...  
You Can Bet  
Your Bottom  
Dollar You See  
The Mark  
Of The  
Leader!

**DAY 'N DAY OUT!**

LEADER'S SPECIAL  
THIS WEEK

1968 CHEVROLET 2-DR. H/T  
TURQUOISE - AIR CONDITIONED - POWER  
STEERING - WHITEWALL TIRES - TINTED GLASS

**\$2,768.00**

YOU GET A BETTER NEW OR  
USED CAR DEAL AT.....

**ALBEMARLE FORD**

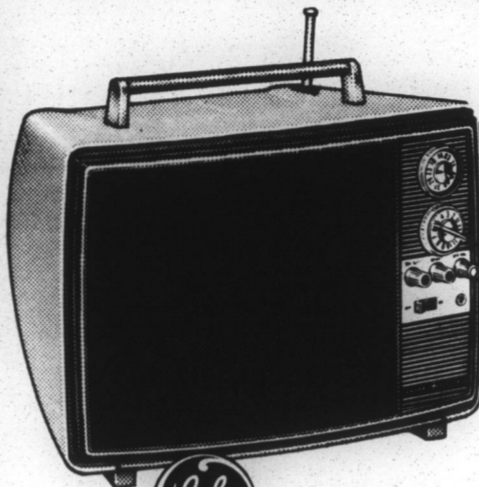
THE SWITCH IS ON... SEE THE LIGHT!

# GOODYEAR 1969-TV-PRE-VIEW

-- INTRODUCING THE NEW 1969 MODELS --

## PERSONAL PORTABLE TV

Ideal For  
Bedroom - Playroom - Kitchen



11" Overall Diag. Tube Meas.  
60 sq. in. viewing area

only **\$88.95**

The Color  
Portable  
That Has  
Everything



BIG  
SCREEN

**\$329.95**

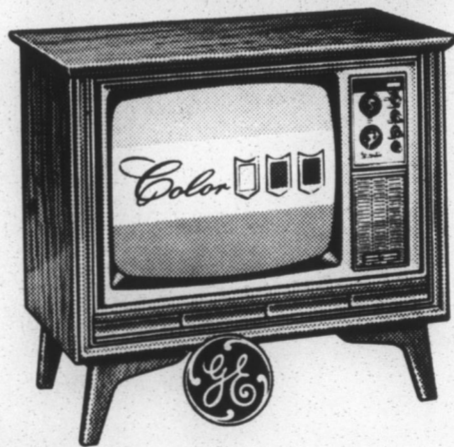
"INSTA-VIEW  
picture comes on  
quickly when the  
set is turned on.

"Electric Eye"  
adjusts picture  
to suit room  
lighting.

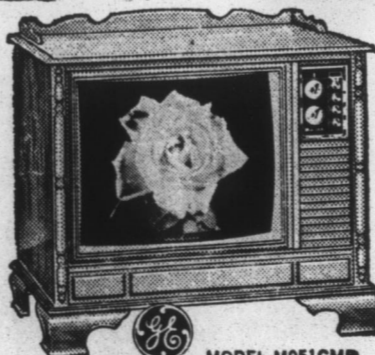
Walnut grained  
finish on durable  
polystyrene  
cabinet.



METER GUIDE  
TAKES THE GUESSWORK  
OUT OF COLOR FINE TUNING!



• SIMPLIFIED COLOR  
TUNING  
• "METER GUIDE" TUNING  
• "COLOR-MINDER" Reference  
Controls  
• Automatic Fine Tuning **\$539.95**



MODEL M951CMP  
THE BEVERLY HILLS

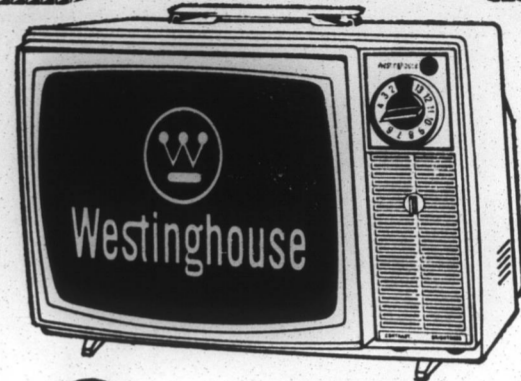
G.E. color TV won't forget it.

□ Simplified Color Tuning featuring "Meter-Guide" Tuning Meter, "Magic-Memory" Color Controls.

□ All VHF-UHF channel reception.

□ Fine Furniture Cabinetry.

□ Authentic Early American Styling. **\$599.95**

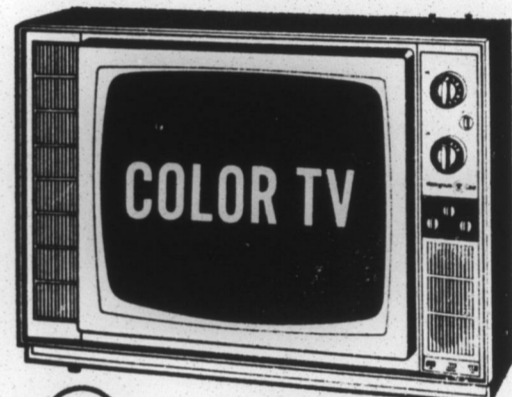


WESTINGHOUSE  
12" DIAGONAL PICTURE  
PORTABLE ATTACHE® TV

• 74 Sq. Inches of Picture Area • 82-Channel Tuning—VHF and UHF—All-On-One-Dial • Steel Guard Picture Tube • Front Mounted Control Panel • Ultra Slim Styling For the Smart "Light Look" • Front Mounted 3-Inch Full Fidelity Speaker • Unipole Telescoping Stowaway VHF Antenna • Loop UHF Antenna

Now Only

**\$94.95**

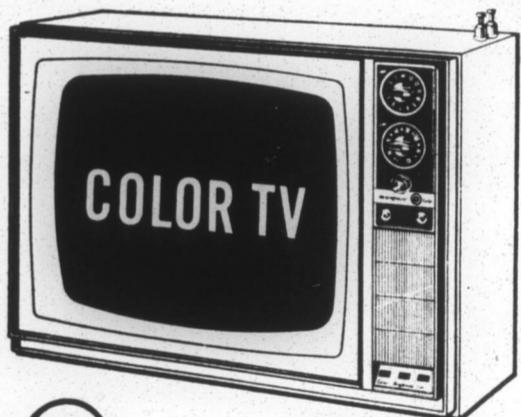


WESTINGHOUSE  
18" DIAGONAL PICTURE  
PORTABLE COLOR TV

• 171 Sq. Inches of Picture Area • New Color Chassis with 22 Major Improvements • Instant Color Fidelity Automatically Assures Immediate, Totally Pure Color • Westinghouse High Bright Tube • 26 KV Picture Power

Now Only

**\$459.95**



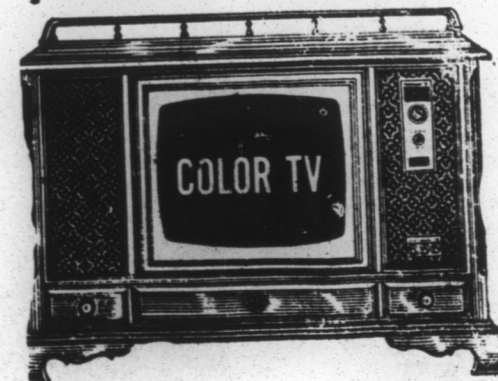
WESTINGHOUSE  
20" DIAGONAL PICTURE  
COMPACT PORTABLE  
COLOR TV

• 227 Sq. Inches of Picture Area • New Color Chassis with 22 Major Improvements • Instant Color Fidelity Automatically Assures Immediate, Totally Pure Color • Westinghouse High Bright Tube • 25 KV Picture Power

Now Only

**\$539.95**

WESTINGHOUSE 23" EARLY AMERICAN  
CONSOLE COLOR TV



Now Only

Exclusive On Screen Tuning Meter  
23 1/2 Square Inch Picture  
Instant On Color TV

**\$639.95**

**GOODYEAR SERVICE STORES**

412 S. Broad St.

Phone 482-2477

Edenton, N. C.