

## Interesting Toy Display Featured At Area Museum

Spinning tops, dolls, games and miniature furnishings of years ago fill a corner of the Museum of the Albemarle gallery for the December exhibit: "Toys of Christmas Past." Brightly painted giant building blocks have become display cases to show off the toys once enjoyed by the grandparents and great grandparents of today's children.

In a time filled with plastics, battery-operated

One group of blocks has been arranged as a doll house. The kitchen boasts a small cast iron cook stove still containing the ashes of make-believe fires 60 years ago. Handmade wooden chairs and a nicely carved china cupboard provide the setting for a doll's tea party in the dining room, while upstairs tiny, twin china dolls are being told a fairy story by a grandmother china doll. Toys for boys have not been omitted from this in-

Many of the toys in the exhibit were usable. A little wooden ice cream freezer makes one cup of ice cream. A toy projector from the 1920's still will show silent movies of Felix the Cat and The Keystone Cops.

A catalog of the toys exhibited is available to the visitor. Each item is numbered and the accompanying booklet gives the information known on the toy and its source. Toys have been loaned for the exhibit by residents of Camden, Pasquotank and Perquimans counties, while donors to the growing museum toy collection represent the entire 10-county Albemarle area.

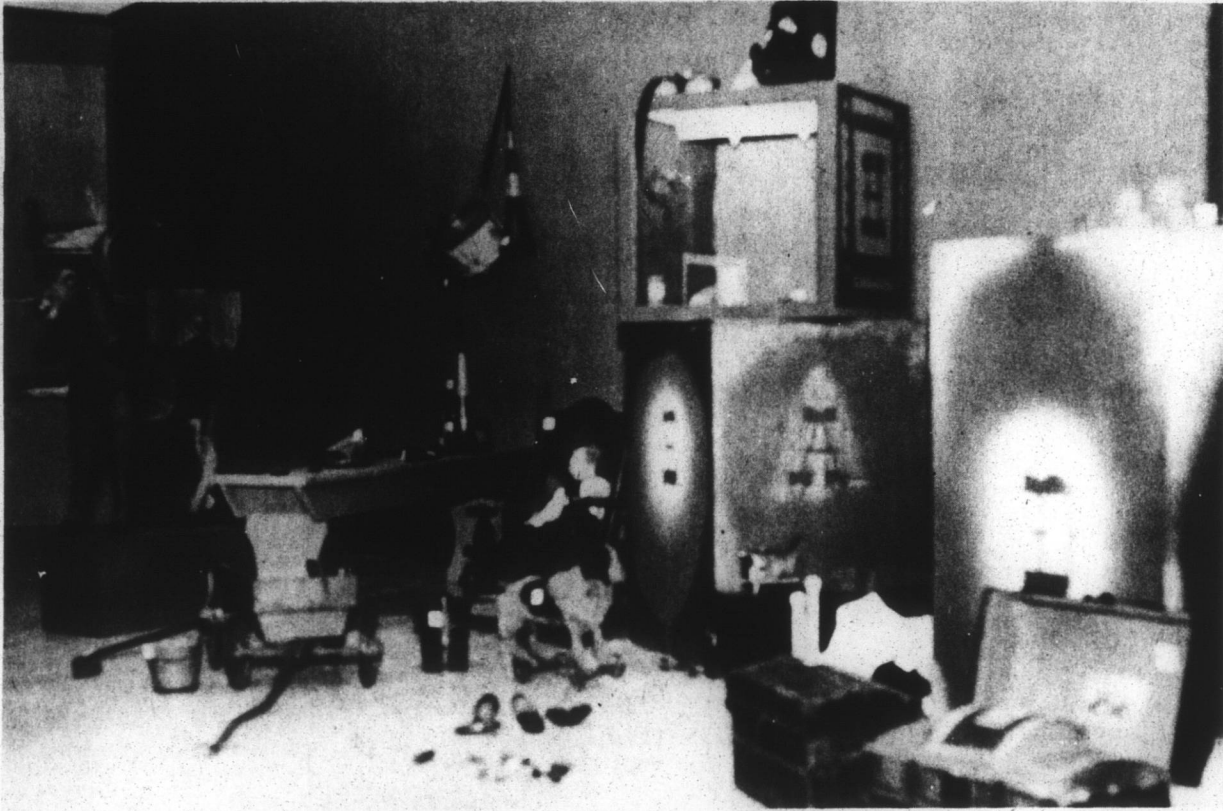
Songs from an old music box will play continuously during this exhibition, which will be shown at the Museum of the Albemarle until January 1. The museum is located on U. S. 17 south of Elizabeth City and is open from 10 to 5 Tuesday through Saturday and from 2 to 5 on Sunday.

Time draws near the birth of Christ:

The moon is hid, the night is still;  
The Christmas bells from hill to hill  
Answer each other in the mist.

—Alfred Tennyson.

TRY A HERALD CLASSIFIED AD!



"TOYS OF CHRISTMAS PAST" SPECIAL MUSEUM FEATURE

# Belk Tyler

IN  
PERSON!

**SANTA**  
IN OUR STORE  
FRIDAY NIGHT  
**7 to 9**

BRING THE KIDS TO  
SEE AND TALK TO SANTA!  
Free Candy Cane To Each Child

# Belk Tyler

Open 9:30 A. M. to 9:00 P. M.  
Until Christmas  
OF EDENTON

Check These Typical Specials From Our Health and Beauty Aids Department

69c 3.25-OZ. SIZE



**MACCLEANS**  
TOOTHPASTE

**53c**



**LISTERINE**  
ANTISEPTIC

\$1.19 14-OZ. SIZE

**79c**



**Head & Shoulders**  
SHAMPOO

REG. \$1.65 4.3 OZ.

**\$1.27**

WORLD'S LARGEST  
SELLING HAIRDRESSING



**BRYLCREEM**

REG. \$1.10 4.5 OZ.

**92c**



**5 day**  
ALL FAMILIES  
ANTI-PERSPIRANT  
DEODORANT

REG. \$1.49 7-OZ. SIZE

**\$1.19**



**ASPIRIN**

100  
NORWICH

REG. 58c

**47c**



**WHITE RAIN**  
HAIR SPRAY  
REG. AND SUPER

REG. \$1.49

**\$1.09**



**CONTAC**

1 CAPSULE  
EVERY  
12 HOURS

**COLD CAPS**  
10 COUNT

REG. \$1.59

**\$1.13**



NEW...THE SOFT IMPRESSION

**KOTEX**  
REG. SUPER

24 COUNT

REG. \$1.10

**85c**



**VICKS**  
**FORMULA**  
**44**  
EXTRA STRENGTH  
COUGH MIXTURE

3.25-OZ. \$1.19 SIZE

**87c**