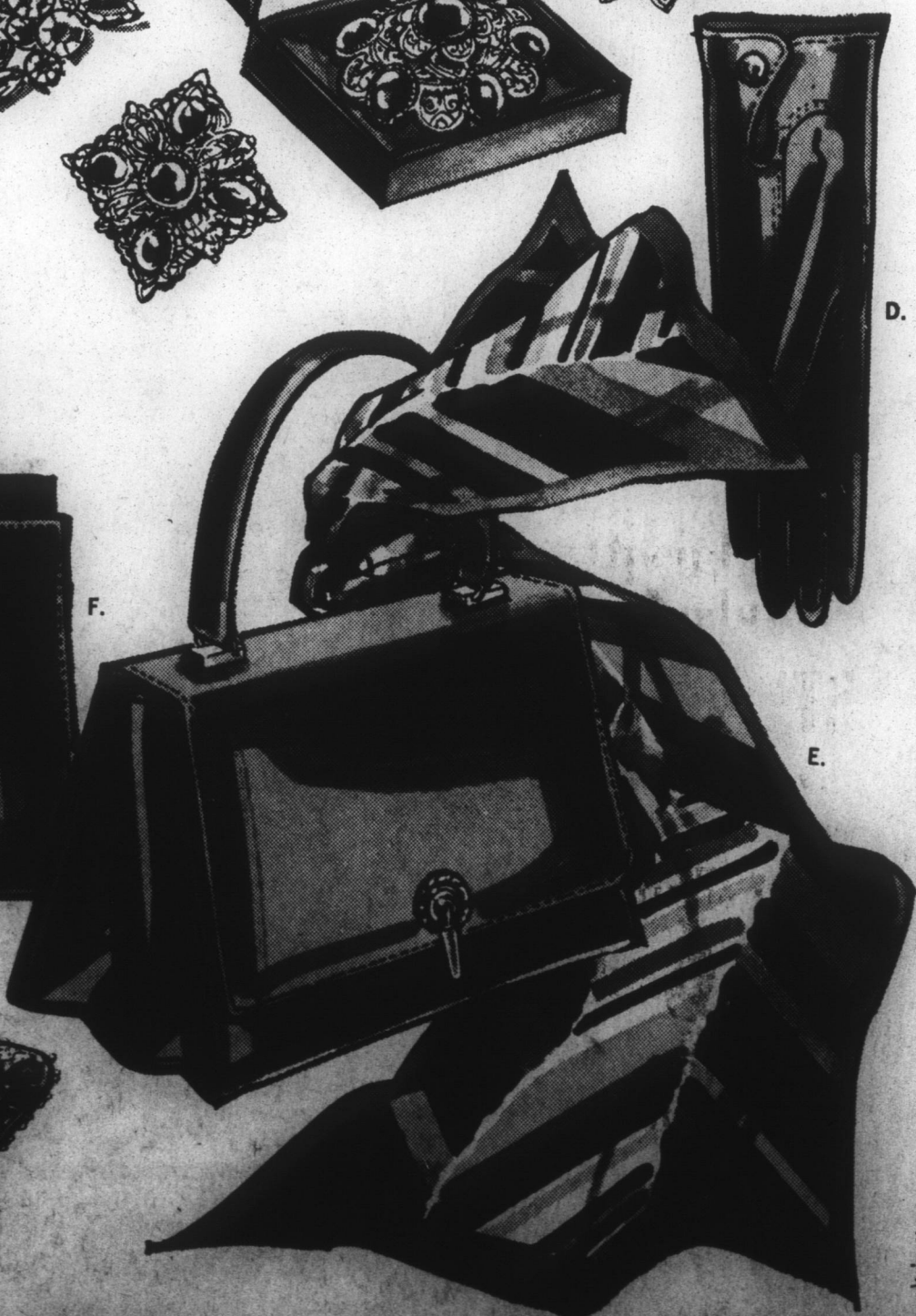
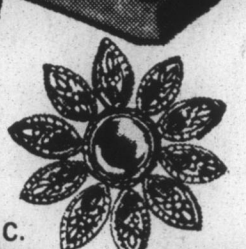
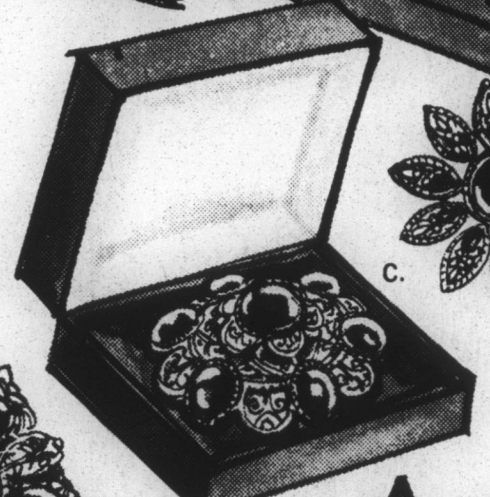
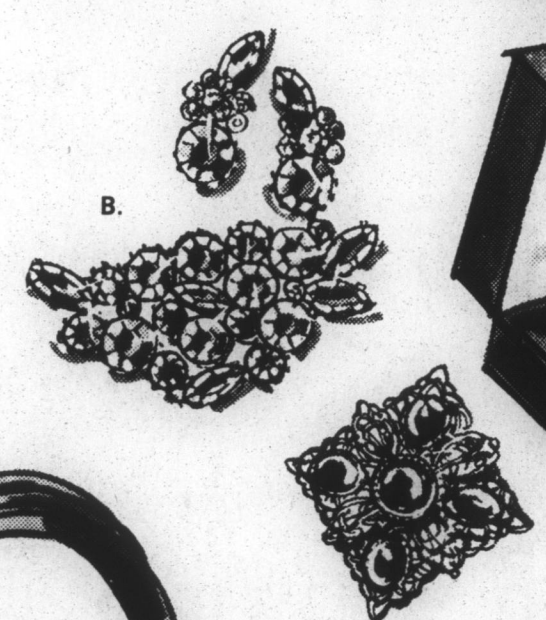
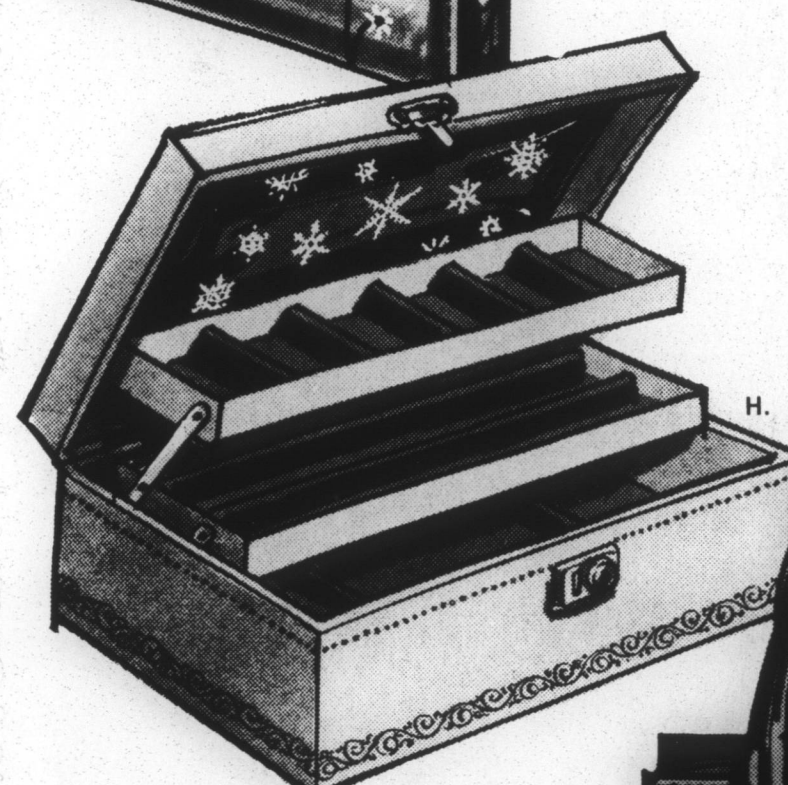
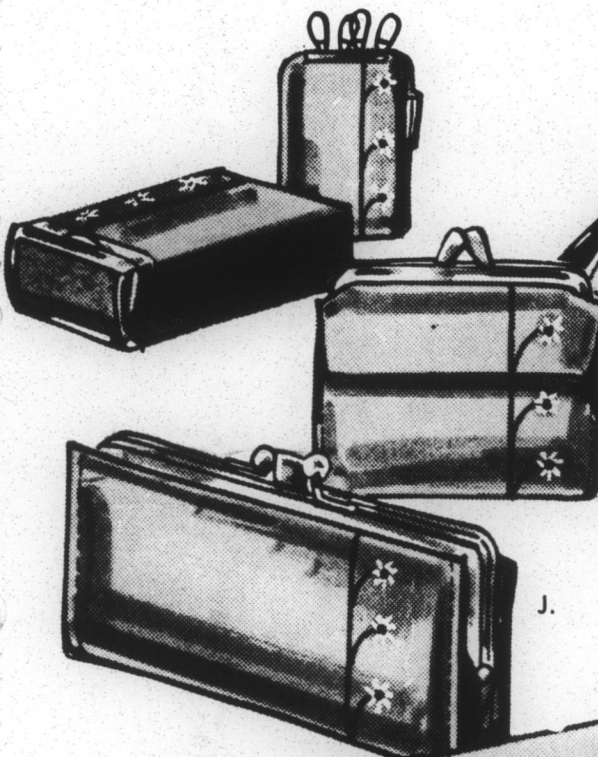
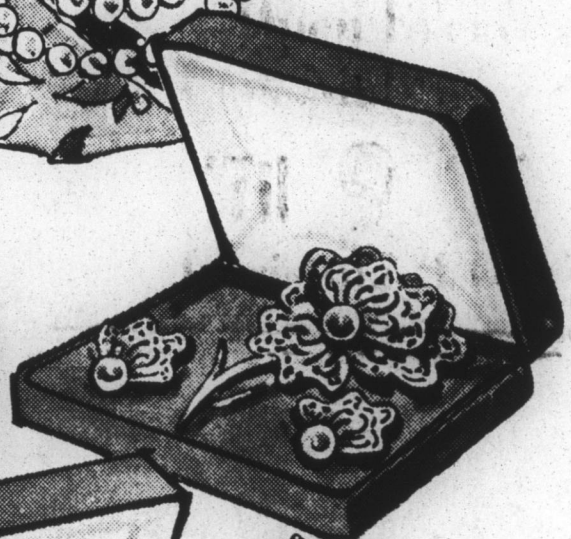


# Belk Tyler

Open Every  
Night  
'Til 9 'Til  
Christmas Eve



FOR THAT  
VERY SPECIAL PERSON



- a. Vendome's twin row of pretend pearls in 8mm size, sterling silver filigree clasp 12.50. Earrings 3.00
- b. Tacao's boxed pin and earring sets in tailored gold color metal, 5.00
- c. Tacao's "Old World" replica pins with rich, heavy stones. Boxed, 3.00
- d. "Heiress" washable capeskin gloves in white, black, brown, bone. Sizes 6-8. By Lanolav. . . . . 8.00
- e. Glensder's fashion scarfs. Squares, oblongs. Silk, blends. 2.00 to 5.00
- f. Equitable's kip calf bags. Black, brown, navy . . . . . 14.00
- g. Seed pearl evening bag by Encore Imports in white, gold, silver, 5.00
- h. Mele's twin tray jewel box. Leatherette. Ivory, gold, walnut . . . . 8.00
- j. Buxton's "Petite Fleur" purse accessories. Saffian cowhide. Bone, blue, green . . . . . 3.00 to 7.50

