

### Lunch Room Menus

Menus at Chowan County school lunch rooms for February 24-28 will be as follows:

**Chowan High School**  
**Monday** — Franks, beef and vegetable soup, cheese squares, strawberry shortcake, crackers, butter, milk.  
**Tuesday** — Stew beef, potatoes, carrots, onions, turnip greens, sliced pineapple, rolls, butter, milk.  
**Wednesday** — Barbecue pork, string beans, candied yams, apple pie, rolls, butter, milk.  
**Thursday** — Fried chicken, steamed rice, butter beans and corn, broccoli, rolls, butter, ice cream, milk.  
**Friday** — Fish sticks, cole slaw, French fries, hush puppies, lemon block cake, apricots, milk.

**White Oak Consolidated School**  
**Monday** — Macaroni and cheese, Vienna sausage, green peas, pickled beets, rolls and butter, fruit cup, milk.  
**Tuesday** — Pork patties with gravy, cheese wedge, buttered potatoes, baked beans, rolls and butter, apple sauce cake, milk.  
**Wednesday** — Chicken with rice, buttered greens, yams, rolls and butter, peanut butter cookies, milk.  
**Thursday** — Oven fried chicken, mixed vegetables, buttered potatoes, pineapple upside down cake, rolls and butter, milk.  
**Friday** — Tuna salad, cole slaw, corn, rolls and butter, peach crisp, milk.

**John A. Holmes High School**  
**Monday** — Fish crisp, peas and carrots, French fries, orange juice, corn bread, butter, chocolate cake, milk.  
**Tuesday** — Sliced bologna, sliced cheese, bread, buttered potatoes, green limas, peach crisp, milk.  
**Wednesday** — Barbecued chicken, candied yams, string beans, orange juice, rolls, butter, jello, milk.  
**Thursday** — Pork loaf with gravy, whipped pota-

toes, apple sauce, rolls, butter, cookies, milk.  
**Friday** — Beef-vegetable soup, pimiento cheese sandwich, hot dog, bread, strawberry shortcake, milk.  
**Ernest A. Swain Elementary School**  
**Monday** — Luncheon meat, carrot and cabbage salad, green beans, rolls and butter, apple pie, milk.  
**Tuesday** — Spanish rice with beef, buttered corn, corn bread and butter, chocolate pudding, milk.  
**Wednesday** — Sausage patties, butter beans, sweet potato puff, biscuits, butter, apple sauce, milk.  
**Thursday** — Beef vegetable soup, crackers, peanut butter and honey sandwiches, pineapple upside down cake, milk.  
**Friday** — Tuna salad, cole slaw, garden peas, potato chips, rolls and butter, peach pie, milk.

**D. F. Walker High School**  
**Monday** — Cheeseburger on bun, candied yams, peas and carrots, apple pie, milk.  
**Tuesday** — Fish portion, cole slaw, whipped potatoes, corn bread, jello, milk.  
**Wednesday** — Roast pork, buttered rice, greens, rolls, lemon cake square.  
**Thursday** — Ham macaroni and cheese, green peas, biscuit, tomato pudding, milk.  
**Friday** — Chicken salad, succotash, tossed salad, school baked rolls, butter, milk.

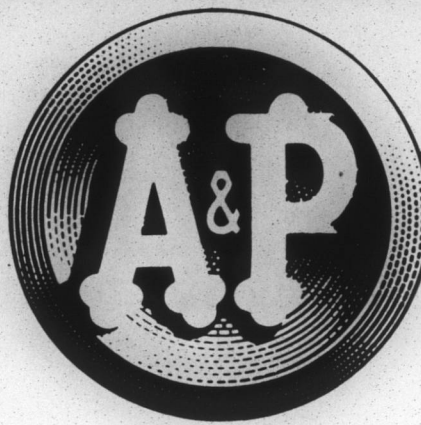
#### CARD OF THANKS

I would like to extend my sincere appreciation to everyone who has remembered me with visits, prayers, cards, flowers and gifts during my stay in the hospital and since my return home. A special thanks to the ministers of the area. May God bless all of you.  
 GEORGE O. CHAPPELL,  
 Tyner, N. C.

He that gives to a grateful man puts out at usury.

**WAIT... Don't Buy an Appliance Until Next Weekend.**  
 -- WATCH FOR --  
**WESTERN GAS SERVICE CLEAN-SWEEP SALE!**

## We care



PRICES IN THIS AD EFFECTIVE THRU SAT., FEB. 22ND. IF UNABLE TO PURCHASE ADVERTISED ITEM, REQUEST A RAIN CHECK.

**"SUPER-RIGHT" SMALL MEATY**  
**Pork Spare Ribs** Lb. **53c**  
**Bacon** 1-Lb. Pkg. **55c** 2 Lb. Pkg. **\$1.09**  
**"SUPER-RIGHT" QUALITY—SLICED**  
**Pork Livers** Lb. **19c**  
**CAP'N JOHN'S FROZEN, BREADED**  
**Fish Sticks** 10-Oz. Pkg. **35c** 1-Lb. Pkg. **53c**  
 VIRGINIA COUNTRY FARM PEPPER COATED, DRY

**Cured Hams** 10 TO 14 LB. AVG. OR HALF HAM Lb. **69c**

### "Super-Right" Meats—Great Buys During Our Celebration!

**"SUPER-RIGHT" HEAVY CORN-FED BEEF**  
**SHOULDER ROAST** Boneless Lb. **69c**  
**"SUPER-RIGHT" HEAVY CORN-FED BEEF**  
**CHUCK STEAK** Boneless Lb. **69c**  
**"SUPER-RIGHT" HEAVY CORN-FED BEEF**  
**BONELESS STEW** Lb. **75c**  
**"SUPER-RIGHT" HEAVY CORN-FED BEEF**  
**SHOULDER STEAK** Boneless Lb. **79c**  
**"SUPER-RIGHT" HEAVY CORN-FED BEEF**  
**CUBED CHUCK STEAK** Lb. **89c**  
**"SUPER-RIGHT" HEAVY CORN-FED BEEF, LEAN**  
**GROUND STEAK** Lb. **69c**

**"SUPER-RIGHT" QUALITY HEAVY CORN-FED BEEF**  
**WHOLE BEEF RIB** 25 TO 35 LB. AVERAGE 10 INCH CUT Lb. **63c**

**"SUPER-RIGHT" QUALITY HEAVY CORN-FED BEEF**  
**CHUCK ROAST** BONE IN Lb. **39c** BONE-LESS Lb. **59c**

**"SUPER-RIGHT" 5-VARIETIES**  
**Chipped Cold Cuts** 3 3-Oz. Pkgs. **\$1.00**  
**HORMEL BRAND—FROZEN**  
**Chuck Wagon Steak** 1-Lb. Pkg. **79c**  
**"SUPER-RIGHT" ALL MEAT**  
**Franks** 12-Oz. Pkg. **39c** 1-Lb. Pkg. **49c**  
**SEA BRAND FROZEN**  
**Breaded Oysters** 1-Lb. Pkg. **99c**  
 VIRGINIA COUNTRY FARM GOVERNMENT INSPECTED—FULLY

**Cooked Hams** 10 TO 12 LB. AVG. WHOLE HAM OR HALF HAM Lb. **79c**

### Founder's Celebration Savings—Fresh Fruits & Vegetables

U. S. NO. ONE—ALL PURPOSE  
**WHITE POTATOES** 10 Lb. Bag **45c**  
 ALL PURPOSE—YELLOW  
**ONIONS** 5-Lb. Bag **29c**  
 SERVE 'EM' MORNING, NOON OR NIGHT  
**GRAPEFRUIT** WHITE MEAT 8 Lb. Bag **59c**  
 FRESH—ALL PURPOSE  
**CARROTS** 2 2-Lb. Bags **29c**  
 GREAT SNACK TREAT—RED WINESAP  
**APPLES** 3 Lb. Bag **45c**

### Founder's Celebration Grocery Values!

• SHOP A&P REGULARLY—BRING A FRIEND! BUY YUKON CLUB  
**Beverages** REGULAR OR LOW CALORIE 10 12-Oz. Cans **79c**  
 • SHOP A&P FOR CANDY VALUES! BUY ANN PAGE  
**Thin Mints** 12-Oz. Pkg. **45c**  
 • GREAT TOPPING FOR FRESH OR FROZEN STRAWBERRIES!  
**A&P Smooth Whip** DESSERT TOPPING MIX 4-Oz. Pkg. **35c**  
 • GUARANTEED TO PLEASE YOU!  
**A&P 97% CAFFEIN FREE Coffee** 8-Oz. Jar **\$1.19**

• EQUAL TO THE BEST—COST YOU LESS!  
**A&P INSTANT RICE** 14-Oz. Pkg. **35c** 24-Oz. Pkg. **59c**  
 • GUARANTEED TO PLEASE YOU!  
**A&P Seedless Raisins** 15-Oz. Pkg. **29c**  
 BORDEN'S SPECIALLY PRICED, REGULAR VARIETY—WHIPPED  
**Instant Potatoes** 2 5½-Oz. Pkg. **45c** 16½-Oz. Pkg. **49c**  
 • SUNNYFIELD REGULAR BLEND  
**Pancake Mix** 2 Lb. Pkg. **33c**  
 • GREAT SAVINGS ON ANN PAGE  
**Pancake AND WAFFLE Syrup** 24-Oz. Bot. **49c**

• SPECIALLY PRICED—A&P FROZEN  
**Strawberries** 10-Oz. Pkg. **27c** 16-Oz. Pkg. **39c**  
 • A&P FROZEN FULLY BAKED  
 • COCOANUT ICED GOLD CAKE  
 • CHOC. ICED DEVILS FOOD CAKE  
 • VAN. ICED DEVILS FOOD CAKE  
 • ORANGE ICED ORANGE CAKE  
 • MARVEL ICE MILK ½-Gal. Ctn. **43c**  
**49c**  
 • SHOP A&P FOR HEALTH AND BEAUTY AIDS—BUY  
**Listerine** ANTISEPTIC 14-Oz. Bottle **\$1.19**  
 • SHOP A&P FOR HEALTH AND BEAUTY AID VALUES! BUY  
**A&P Mouthwash** 14-Oz. Bot. **39c**

**CAMPBELL SOUPS**  
 • CHICKEN WITH STARS  
 • CHICKEN NOODLE  
 • CHICKEN WITH RICE  
**3** 10½-Oz. Cans Of Your Choice **50c**

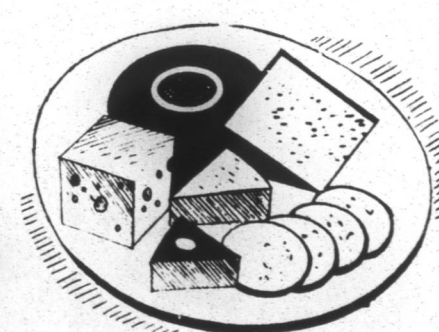
• HEARTY AND VIGOROUS  
**Our Own Tea** 1½-Lb. Pkg. **69c**  
 • SPECIALLY PRICED—NABISCO  
**Toastettes** 2 10-Oz. Pkgs. **69c**  
 • SULTANA APPLE BASE JELLIES  
**3** 16-Oz. Glasses **\$1.00**  
 STRAWBERRY, RASPBERRY OR BLACKBERRY  
 BUY A&P MILK SOLIDS AND CHOCOLATE  
**Nestle's Quik** 2-Lb. Pkg. **89c**

**HELD OVER! PORCELAIN FINE CHINA**  
 Don't Miss This Final Opportunity To Complete Your Set At Value Prices!  
 LAST CHANCE FOR BONUS VALUE  
**CUPS** EACH WITH \$5.00 PURCHASE **33c**

### Bakery Buys!

JANE PARKER BROWN N' SERVE JANE PARKER DANISH  
**Flaky Rolls** 2 12-Oz. Pkgs. **49c** **Pecan Ring** 9-Oz. Pkg. **39c**  
 JANE PARKER FRESHLY MADE CHERRY JANE PARKER MARBLE POUND  
**Pie** 24-Oz. Pkg. **59c** **Cake** 3 15-Oz. Pkgs. **\$1.00**

JANE PARKER ENRICHED COUNTRY STYLE—MADE WITH BUTTERMILK  
**BREAD** 4 1½-Lb. Loaves **99c**

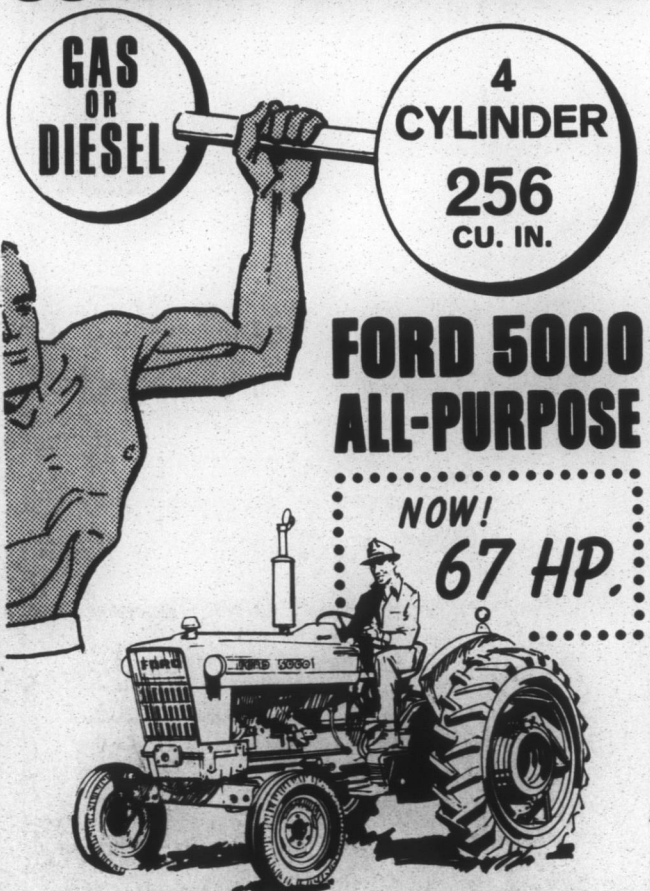


### Dairy Foods

DRY NON-FAT A&P BRAND INSTANT  
**Milk Solids** 12-Oz. 2-Lb. Pkg. **\$1.19**  
 OUTSTANDING VALUE ON A&P  
**Cream Cheese** 2 3-Oz. Pkgs. **27c**  
 NEW LOW PRICE ON  
**A&P Egg Nog** Qt. Can **59c**

GUARANTEED TO PLEASE YOU! A&P EVAPORATED  
**Skimmed Milk** 3 13-Fl. Oz. Cans **37c**

## COMING ON STRONG



**4 CYLINDER 256 CU. IN.**  
**FORD 5000 ALL-PURPOSE**  
**NOW! 67 HP.**  
 • THIS NEW POWER  
 • CHOICE OF TRANSMISSIONS  
 • LONG WEARING MULTIPLE DISC BRAKES  
 KEYS TO GIVE YOU BETTER DEALS  
 • SELECT POWER STEERING  
**FORD TRACTOR**  
 COME IN NOW... ASK FOR A FREE DEMONSTRATION  
**Edenton Tractor & Implement Co**  
 PHONE 482-3123 — EDENTON, N. C.